



City Research Online

City St George's, University of London

Citation: Majewski, A. A., Bormetti, G. & Corsi, F. (2015). Smile from the past: A general option pricing framework with multiple volatility and leverage components. *Journal of Econometrics*, 187(2), pp. 521-531. doi: 10.1016/j.jeconom.2015.02.036

This is the accepted version of the paper.

This version of the publication may differ from the final published version. To cite this item please consult the publisher's version.

Permanent repository link: <https://openaccess.city.ac.uk/id/eprint/19452/>

Link to published version: <https://doi.org/10.1016/j.jeconom.2015.02.036>

Copyright and Reuse: Copyright and Moral Rights remain with the author(s) and/or copyright holders. Copies of full items can be used for personal research or study, educational, or not-for-profit purposes without prior permission or charge, unless otherwise indicated, provided that the authors, title and full bibliographic details are credited, a hyperlink and/or URL is given for the original metadata page and the content is not changed in any way. For full details of reuse please refer to [City Research Online policy](#).

Smile from the Past: A general option pricing framework with multiple volatility and leverage components

Adam A. Majewski^{a,*}, Giacomo Bormetti^{a,b}, and Fulvio Corsi^{c,d}

March 2014

^a *Scuola Normale Superiore, Piazza dei Cavalieri 7, Pisa, 56126, Italy*

^b *QUANTLab¹, via Pietrasantina 123, Pisa, 56122, Italy*

^c *Ca' Foscari University of Venice, Fondamenta San Giobbe 873, Venezia, 30121, Italy*

^d *City University London, Northampton Square, London EC1V 0HB, United Kingdom*

Abstract

In the current literature, the analytical tractability of discrete time option pricing models is guaranteed only for rather specific types of models and pricing kernels. We propose a very general and fully analytical option pricing framework, encompassing a wide class of discrete time models featuring multiple-component structure in both volatility and leverage, and a flexible pricing kernel with multiple risk premia. Although the proposed framework is general enough to include either GARCH-type volatility, Realized Volatility or a combination of the two, in this paper we focus on realized volatility option pricing models by extending the Heterogeneous Autoregressive Gamma (HARG) model of Corsi et al. (2012) to incorporate heterogeneous leverage structures with multiple components, while preserving closed-form solutions for option prices. Applying our analytically tractable asymmetric HARG model to a large sample of S&P 500 index options, we demonstrate its superior ability to price out-of-the-money options compared to existing benchmarks.

*Corresponding author. Tel.: +39 05050 9094, *E-mail address*: adam.majewski@sns.it

¹www.quantlab.it

1 Introduction

Due primarily to mathematical tractability and flexibility of incorporating various types of risk premia, the literature on option pricing traditionally has been dominated by continuous-time processes.² On the other hand, models for asset dynamics under the physical measure \mathbb{P} have primarily been developed in discrete-time. The time-varying volatility models of the ARCH-GARCH families (Engle, 1982; Bollerslev, 1996; Glosten et al., 1993; Nelson, 1991) have led the field in estimating and predicting the volatility dynamics. More recently, thanks to the availability of intra-day data, the so called Realized Volatility (RV) approach also became a prominent approach for measuring and forecasting volatility. The key advantage of the RV is that it provides a precise nonparametric measure of daily volatility³ (i.e., making it observable) which leads to simplicity in model estimation and superior forecasting performance.

Discrete time models present the important advantage of being easily filtered and estimated even in the presence of complex dynamical features such as long memory, multiple components and asymmetric effects, which turns out to be crucial in improving volatility forecast and option pricing performances. A growing strand of literature advocates for the presence of a multi-factor volatility structure both under the physical measure (Muller et al., 1997; Engle and Lee, 1999; Bollerslev and Wright, 2001; Barndorff-Nielsen and Shephard, 2001; Calvet and Fisher, 2004) and the risk neutral one (Bates, 2000, 2012; Li and Zhang, 2010; Christoffersen et al., 2008; Adrian and Rosenberg, 2007). In the discrete time option pricing literature, multiple components have been incorporated into both GARCH-type (Christoffersen et al., 2008) and realized volatility models (Corsi et al., 2012), and both approaches have shown that short-run and long-run components are necessary to capture the term structure of the implied volatility surface. Also in the modelling of the so called leverage effect (the asymmetric impact of positive and negative past returns on future volatility), recent papers advocate the need for a multi-component leverage structure in volatility forecasting (Scharth and Medeiros, 2009; Corsi

²Heston (1993), Duan (1995), Heston and Nandi (2000), Merton (1976), Bates (1996), Bates (2000), Pan (2002), Huang (2004), Bates (2006), Eraker (2004), Eraker et al. (2003) and Broadie et al. (2007)

³This idea trace back to Merton (1980) and has been recently formalized and generalized in a series of papers that apply the quadratic variation theory to the class of L_2 semi-martingales; See, e.g., Comte and Renault (1998), Andersen et al. (2001) Andersen et al. (2003), Barndorff-Nielsen and Shephard (2001), Barndorff-Nielsen and Shephard (2002a), Barndorff-Nielsen and Shephard (2002b), Barndorff-Nielsen and Shephard (2005).

and Renò, 2012). Finally, the need for a flexible pricing kernel incorporating variance-dependent risk premia, in addition to the common equity risk premium, has been well-documented by Christoffersen et al. (2013). However, in the current literature, the analytical tractability of discrete time option pricing models is guaranteed only for rather specific types of models and pricing kernels.

The purpose of this paper is to propose a very general framework encompassing a wide class of discrete time multi-factor asymmetric volatility models for which we show how to derive (using conditional moment-generating functions) closed-form option valuation formulas under a very general and flexible state-dependent pricing kernel. This general framework allows for a wide range of interesting applications. For instance, it permits a straightforward generalization of both the multi-component GARCH-type model of Christoffersen et al. (2008) as well as of the Heterogeneous Autoregressive Gamma (HARG) model for realized volatility of Corsi et al. (2012). In this paper we focus our attention on the applications of the general framework to the realized volatility class of model, while its applications to the GARCH type of model will be the subject of a separate, companion paper.⁴

In more detail, this paper provides several theoretical results for both the general framework and for the specific application to realized volatility models which can be summarized as follows. For the general framework we show: (i) the recursive formula for the analytical Moment Generating Function (MGF) under \mathbb{P} , (ii) the general characterization of the analytical no-arbitrage conditions, (iii) the formal change of measure obtained using a general and flexible exponentially affine Stochastic Discount Factor (SDF), which features both equity risk premium and multi-factor variance risk premia, (iv) the recursive formula for the analytical MGF under \mathbb{Q} .

In addition, by applying the general framework to the specific class of model featuring HARG type dynamics for realized volatility we are able to: (i) introduce various flexible types of leverage with heterogeneous structures analogous to the one specified by the HARG model for volatility, by preserving the full analytical tractability of the model, (ii) have flexible skewness and kurtosis term structure under both \mathbb{P} and \mathbb{Q} , (iii) have an explicit one-to-one mapping between the parameters of the volatility

⁴Recently, Christoffersen et al. (2014) have proposed an alternative option pricing model nesting GARCH and realized volatilities models called General Affine Realized Volatility which, however, does not include HARG-RV processes.

dynamics under \mathbb{P} and \mathbb{Q} , (iv) have closed-form option prices for model with heterogeneous realized volatility and leverage dynamics. Finally, by applying our fully analytically tractable HARG model with heterogeneous leverage on a large sample of S&P 500 index options, we show the superior ability of the model in pricing out-of-the-money (OTM) options compared to existing benchmarks.

The rest of the paper is organized as follows. In Section 2 we propose the general framework for option pricing with multi-factor volatility models. Section 3 defines a family of HARG models for realized volatility with leverage (LHARG), presents two particular models belonging to the family, describes the estimation of the models, and analyzes their statistical properties. Section 4 reports the option pricing performance of LHARG models, comparing them to benchmark models. Finally, in Section 5 we summarize the results.

2 The multi-factor volatility models

2.1 General framework

The main purpose of introducing a multi-factor structure in volatility modeling is to account for dependencies among volatilities at different time-scales. Currently, there are two alternative approaches in the literature. The first is to decompose the daily volatility into several factors and model the dynamics of each factor independently, as done by Christoffersen et al. (2008) or Fouque and Lorig (2011) in terms of short-run and long-run volatility components. The other approach is to define factors as an average of past volatilities over different time horizons, for instance the daily, weekly and monthly components in Corsi (2009). In this section we propose a general framework which includes both approaches.

We consider a risky asset with price S_t and geometric return

$$y_{t+1} = \log \left(\frac{S_{t+1}}{S_t} \right).$$

To model the dynamics of log-returns we define the k -dimensional vector of factors f_t^1, \dots, f_t^k which we shortly denote as \mathbf{f}_t . The volatility on day t is defined as a linear function of factors $\mathcal{L} : \mathbb{R}^k \rightarrow \mathbb{R}$

and the daily log-returns on day $t + 1$ are modeled by equation

$$y_{t+1} = r + \lambda \mathcal{L}(\mathbf{f}_{t+1}) + \sqrt{\mathcal{L}(\mathbf{f}_{t+1})} \epsilon_{t+1}, \quad (2.1)$$

where r is the risk-free rate, λ is the market price of risk, and ϵ_t are i.i.d. $\mathcal{N}(0, 1)$. We model \mathbf{f}_{t+1} as

$$\mathbf{f}_{t+1} | \mathbf{F}_t, \mathbf{L}_t \sim \mathcal{D}(\Theta_0, \Theta(\mathbf{F}_t, \mathbf{L}_t)), \quad (2.2)$$

where \mathcal{D} denotes a generic distribution depending on the vector of parameters Θ which is a k -dimensional function of the matrices $\mathbf{F}_t = (\mathbf{f}_t, \dots, \mathbf{f}_{t-p+1}) \in \mathbb{R}^{k \times p}$ and $\mathbf{L}_t = (\boldsymbol{\ell}_t, \dots, \boldsymbol{\ell}_{t-q+1}) \in \mathbb{R}^{k \times q}$ for $p > 0$ and $q > 0$, respectively. We consider the case of a linear dependence of Θ on \mathbf{F} and \mathbf{L}

$$\Theta(\mathbf{F}_t, \mathbf{L}_t) = \mathbf{d} + \sum_{i=1}^p \mathbf{M}_i \mathbf{f}_{t+1-i} + \sum_{j=1}^q \mathbf{N}_j \boldsymbol{\ell}_{t+1-j}, \quad (2.3)$$

where $\mathbf{M}_i, \mathbf{N}_j \in \mathbb{R}^{k \times k}$ for $i = 1, \dots, p$ and $j = 1, \dots, q$, $\mathbf{d} \in \mathbb{R}^k$, and vectors $\boldsymbol{\ell}_{t-j}$ are of the form

$$\boldsymbol{\ell}_{t+1-j} = \begin{bmatrix} (\epsilon_{t+1-j} - \gamma_1 \sqrt{\mathcal{L}(\mathbf{f}_{t+1-j})})^2 \\ \vdots \\ (\epsilon_{t+1-j} - \gamma_k \sqrt{\mathcal{L}(\mathbf{f}_{t+1-j})})^2 \end{bmatrix}. \quad (2.4)$$

The vector Θ_0 collects all the parameters of the distribution \mathcal{D} which do not depend on the past history of the factors and of the leverage. For the distribution \mathcal{D} considered in this paper (Dirac delta and non-central Gamma distribution) the sufficient condition for the non-negativity of process reads:

$$\mathbf{d} \geq 0 \quad \mathbf{M}_i \geq 0 \text{ for all } i \in \{1, \dots, p\} \quad \mathbf{N}_j \geq 0 \text{ for all } j \in \{1, \dots, q\}, \quad (2.5)$$

where \geq has to be meant as componentwise inequality.

The results presented in this paper are derived under the general assumption

Assumption 1. *The following relation holds true*

$$\mathbb{E} \left[e^{zy_{s+1} + \mathbf{b} \cdot \mathbf{f}_{s+1} + \mathbf{c} \cdot \boldsymbol{\ell}_{s+1}} | \mathcal{F}_s \right] = e^{\mathcal{A}(z, \mathbf{b}, \mathbf{c}) + \sum_{i=1}^p \mathcal{B}_i(z, \mathbf{b}, \mathbf{c}) \cdot \mathbf{f}_{s+1-i} + \sum_{j=1}^q \mathcal{C}_j(z, \mathbf{b}, \mathbf{c}) \cdot \boldsymbol{\ell}_{s+1-j}} \quad (2.6)$$

for some functions $\mathcal{A} : \mathbb{R} \times \mathbb{R}^k \times \mathbb{R}^k \rightarrow \mathbb{R}$, $\mathcal{B}_i : \mathbb{R} \times \mathbb{R}^k \times \mathbb{R}^k \rightarrow \mathbb{R}^k$, and $\mathcal{C}_j : \mathbb{R} \times \mathbb{R}^k \times \mathbb{R}^k \rightarrow \mathbb{R}^k$, where $\mathbf{b}, \mathbf{c} \in \mathbb{R}^k$ and \cdot stands for the scalar product in \mathbb{R}^k .

Our framework is suited to include both GARCH-like models and realized volatility models. As far as the former class is concerned, we encompass the family of multiple component GARCH models with parabolic leverage pioneered in Heston and Nandi (2000) and later extended to the two Component GARCH (CGARCH) by Christoffersen et al. (2008). For instance, the latter model corresponds to the following dynamics

$$\begin{aligned} y_{t+1} &= r + \lambda h_{t+1} + \sqrt{h_{t+1}} \epsilon_{t+1}, \\ h_{t+1} &= q_{t+1} + \beta_1 (h_t - q_t) + \alpha_1 \left(\epsilon_t^2 - 1 - 2\gamma_1 \epsilon_t \sqrt{h_t} \right), \\ q_{t+1} &= \omega + \beta_2 q_t + \alpha_2 \left(\epsilon_t^2 - 1 - 2\gamma_2 \epsilon_t \sqrt{h_t} \right). \end{aligned} \quad (2.7)$$

Setting $k = 2$, we define $f_{t+1}^1 = h_{t+1} - q_{t+1}$ and $f_{t+1}^2 = q_{t+1}$ and rewrite the model as

$$\begin{bmatrix} f_{t+1}^1 \\ f_{t+1}^2 \end{bmatrix} = \begin{bmatrix} -\alpha_1 \\ \omega - \alpha_2 \end{bmatrix} + \begin{bmatrix} \beta_1 - \alpha_1 \gamma_1^2 & -\alpha_1 \gamma_1^2 \\ -\alpha_2 \gamma_2^2 & \beta_2 - \alpha_2 \gamma_2^2 \end{bmatrix} \begin{bmatrix} f_t^1 \\ f_t^2 \end{bmatrix} + \begin{bmatrix} \alpha_1 & 0 \\ 0 & \alpha_2 \end{bmatrix} \begin{bmatrix} \left(\epsilon_t - \gamma_1 \sqrt{\mathcal{L}(\mathbf{f}_t)} \right)^2 \\ \left(\epsilon_t - \gamma_2 \sqrt{\mathcal{L}(\mathbf{f}_t)} \right)^2 \end{bmatrix}, \quad (2.8)$$

where $\mathcal{L}(\mathbf{f}_t) = f_t^1 + f_t^2 = h_t$. If we now specify for \mathcal{D} in eq. (2.2) the form of a Dirac delta distribution, define $\mathbf{d} = (-\alpha_1, \omega - \alpha_2)^t$, and identify the matrices \mathbf{M}_1 and \mathbf{N}_1 in a natural way from the right term side of eq. (2.8), the model by Christoffersen *et al.* fits the general formula (2.2). It is worth mentioning that for the CGARCH model it is not possible to ensure the non-negative definiteness of both h_t and q_t for all t (condition (2.5) is not satisfied). Nonetheless, for realistic values of the parameters the probability of obtaining negative volatility factors is extremely low, and this drawback is largely compensated for by the effectiveness of the model in capturing real time series empirical features. We discuss the issue of positivity in greater detail in Section 3.3.

The second example that we discuss is the class of realized volatility models known as Autoregressive Gamma Processes (ARG) introduced in Gouriéroux and Jasiak (2006), to whom the Heterogeneous Autoregressive Gamma (HARG) model presented in Corsi et al. (2012) belongs. The process RV_t is an ARG(p) if and only if its conditional distribution given $(\text{RV}_{t-1}, \dots, \text{RV}_{t-p})$ is a noncentred gamma distribution $\bar{\gamma}(\delta, \sum_{i=1}^p \beta_i \text{RV}_{t-i}, \theta)$, where δ is the shape, $\sum_{i=1}^p \beta_i \text{RV}_{t-i}$ the non-centrality, and θ the scale. Then, the model described by eq.s (2.2)-(2.3) reduces to an ARG(p) if we fix $k = 1$, $\mathbf{f}_t = \text{RV}_t$, $\mathcal{D}(\Theta_0, \Theta(\mathbf{F}_{t-1})) = \bar{\gamma}(\delta, \Theta(\mathbf{F}_{t-1}), \theta)$ with

$$\Theta_0 = (\delta, \theta)^t, \quad \text{and} \quad \Theta(\mathbf{F}_{t-1}) = \sum_{i=1}^p \beta_i \mathbf{f}_{t-i}.$$

2.2 Physical and risk-neutral worlds

The general framework defined by eq.s (2.1)-(2.4) combined with the assumption (2.6) allows us to completely characterize the MGF of the log-returns under the physical measure. If relation (2.6) is satisfied, then the moment generating function of $\ln(S_T/S_t)$ is given by recursive relation in terms of functions \mathcal{A} , \mathcal{B}_i , \mathcal{C}_j : we present the formulae in Appendix B.

By specifying the Stochastic Discount Factor (SDF) within the family of the exponential-affine factors, we are able to compute analogous recursions under \mathbb{Q} . The need for variance-dependent risk premia in SDF, in addition to the common equity risk premium, has been shown by Christoffersen et al. (2013), Gagliardini et al. (2011) and Corsi et al. (2012) to be crucial in reconciling the time series properties of stock returns with the cross-section of option prices. Our framework permits the adoption of a very general and flexible pricing kernel incorporating, in addition to the common equity risk premium, multiple factor-dependent risk premia. The most general SDF that we might consider in our framework corresponds to the following

$$M_{s,s+1} = \frac{e^{-\boldsymbol{\nu}_1 \cdot \mathbf{f}_{s+1} - \nu_2 y_{s+1}}}{\mathbb{E}^{\mathbb{P}} [e^{-\boldsymbol{\nu}_1 \cdot \mathbf{f}_{s+1} - \nu_2 y_{s+1}} | \mathcal{F}_s]}, \quad (2.9)$$

with $\boldsymbol{\nu}_1 \in \mathbb{R}^k$. The general framework allows us to introduce $k + 1$ risk premia. In this paper we consider models where \mathbf{f}_t is one-dimensional and corresponds to the continuous component of the

realized variance. Thus we restrict to two risk premia, ν_1 and ν_2 , leaving open the possibility for future research to include further risk premia related to other volatility components due to jumps and overnight returns.

Moment generating function under risk-neutral measure for models where the joint dynamics of log-returns and volatility is affine combined with exponential-affine SDF, can be derived in semi-closed form, as has been shown in Gouriéroux and Monfort (2007). In Appendix B we show that MGF of $\ln(S_T/S_t)$ under risk-neutral measure \mathbb{Q} is given by recursive relation in terms of functions \mathcal{A} , \mathcal{B}_i , \mathcal{C}_j . The resulting risk-neutral dynamics depend on the values of the equity and variance risk premia, ν_1 and ν_2 respectively, which have to satisfy the no arbitrage constraints. For all the models within the general framework, the no-arbitrage conditions can be written in terms of functions \mathcal{A} , \mathcal{B}_i , \mathcal{C}_j given in Proposition 2 which summarizes all the results of this section.

Proposition 2. *If Assumption 1 is satisfied then the moment generating function of $\ln(S_T/S_t)$ under measures \mathbb{P} and \mathbb{Q} is given by recursive relation in terms of functions \mathcal{A} , \mathcal{B}_i , \mathcal{C}_j . Moreover the SDF (2.9) is compatible with the no arbitrage restriction if the following conditions are satisfied:*

$$\begin{aligned}
 \mathcal{A}(1 - \nu_2, -\boldsymbol{\nu}_1, \mathbf{0}) &= r + \mathcal{A}(-\nu_2, -\boldsymbol{\nu}_1, \mathbf{0}) \\
 \mathcal{B}_i(1 - \nu_2, -\boldsymbol{\nu}_1, \mathbf{0}) &= \mathcal{B}_i(-\nu_2, -\boldsymbol{\nu}_1, \mathbf{0}) \quad \text{for } i = 1, \dots, p \\
 \mathcal{C}_j(1 - \nu_2, -\boldsymbol{\nu}_1, \mathbf{0}) &= \mathcal{C}_j(-\nu_2, -\boldsymbol{\nu}_1, \mathbf{0}) \quad \text{for } j = 1, \dots, q.
 \end{aligned}
 \tag{2.10}$$

Proof: See Appendix A and B .

3 LHARG-RV

3.1 The model

HAR-RV processes were introduced to financial literature by Corsi (2009), and are characterized by the different impact that past realized variances aggregated on a daily, weekly and monthly basis have on today's realized variance. Lagged terms are collected in three different non-overlapping factors: RV_t (short-term volatility factor), $\text{RV}_t^{(w)}$ (medium-term volatility factor), and $\text{RV}_t^{(m)}$ (long-term volatility factor). Corsi et al. (2012) presents the application of HAR-RV models to option pricing, discussing

an extension of the HAR-RV which includes a daily binary Leverage component (HARGL). However, in Corsi and Renò (2012) the authors stress the importance of a heterogeneous structure for leverage. Thus we develop an Autoregressive Gamma model with Heterogeneous parabolic Leverage, and we name it the LHARG-RV model.

LHARG-RV belongs to the family of models described by (2.1)-(2.4) setting $k = 1$ and $f_t = \text{RV}_t$. Thus, log-returns evolve according to the equation

$$y_{t+1} = r + \lambda \text{RV}_{t+1} + \sqrt{\text{RV}_{t+1}} \epsilon_{t+1}, \quad (3.1)$$

while the realized variance at time $t + 1$ conditioned on information at day t is sampled from a noncentred gamma distribution

$$\text{RV}_{t+1} | \mathcal{F}_t \sim \bar{\gamma}(\delta, \Theta(\mathbf{RV}_t, \mathbf{L}_t), \theta) \quad (3.2)$$

with

$$\Theta(\mathbf{RV}_t, \mathbf{L}_t) = d + \beta_d \text{RV}_t^{(d)} + \beta_w \text{RV}_t^{(w)} + \beta_m \text{RV}_t^{(m)} + \alpha_d \ell_t^{(d)} + \alpha_w \ell_t^{(w)} + \alpha_m \ell_t^{(m)}. \quad (3.3)$$

In the previous equation $d \in \mathbb{R}$ is a constant and the quantities

$$\begin{aligned} \text{RV}_t^{(d)} &= \text{RV}_t, & \ell_t^{(d)} &= (\epsilon_t - \gamma \sqrt{\text{RV}_t})^2, \\ \text{RV}_t^{(w)} &= \frac{1}{4} \sum_{i=1}^4 \text{RV}_{t-i}, & \ell_t^{(w)} &= \frac{1}{4} \sum_{i=1}^4 (\epsilon_{t-i} - \gamma \sqrt{\text{RV}_{t-i}})^2, \\ \text{RV}_t^{(m)} &= \frac{1}{17} \sum_{i=5}^{21} \text{RV}_{t-i}, & \ell_t^{(m)} &= \frac{1}{17} \sum_{i=5}^{21} (\epsilon_{t-i} - \gamma \sqrt{\text{RV}_{t-i}})^2, \end{aligned}$$

correspond to the heterogeneous components associated with the short-term (daily), medium-term (weekly), and long-term (monthly) volatility and leverage factors, on the left and right columns respectively. The structure of leverage is analogous to the one in Heston and Nandi (2000), and it is based on asymmetric influence of shock: large positive idiosyncratic component ϵ_t has a smaller impact on RV_{t+1} than large negative ϵ_t . As consequence the log-returns and variance process are negatively

correlated:

$$\begin{aligned} \text{Cov}_{t-1}(y_t, RV_{t+1}) &= -2\theta\alpha_d\gamma\mathbb{E}[RV_t|\mathcal{F}_{t-1}] \\ &= -2\theta^2\alpha_d\gamma(\delta + \Theta(\mathbf{RV}_{t-1}, \mathbf{L}_{t-1})). \end{aligned} \quad (3.4)$$

In order to adjust eq. (3.3) to our framework we rewrite $\Theta(\mathbf{RV}_t, \mathbf{L}_t)$ as

$$d + \sum_{i=1}^{22} \beta_i RV_{t+1-i} + \sum_{j=1}^{22} \alpha_j \left(\epsilon_{t+1-j} - \gamma\sqrt{RV_{t+1-j}} \right)^2, \quad (3.5)$$

with

$$\beta_i = \begin{cases} \beta_d & \text{for } i = 1 \\ \beta_w/4 & \text{for } 2 \leq i \leq 5 \\ \beta_m/17 & \text{for } 6 \leq i \leq 22 \end{cases} \quad \alpha_j = \begin{cases} \alpha_d & \text{for } j = 1 \\ \alpha_w/4 & \text{for } 2 \leq j \leq 5 \\ \alpha_m/17 & \text{for } 6 \leq j \leq 22 \end{cases}. \quad (3.6)$$

We show in Appendix B that LHARG models satisfy Assumption 1, and we explicitly derive the \mathcal{A} , \mathcal{B}_i , and \mathcal{C}_j functions. Then, the general results presented in Section 2.2 read

Proposition 3. *Under \mathbb{P} , the MGF for LHARG model has the following form*

$$\varphi^{\mathbb{P}}(t, T, z) = \mathbb{E}^{\mathbb{P}}[e^{zy_{t,T}}|\mathcal{F}_t] = \exp\left(a_t + \sum_{i=1}^p b_{t,i}RV_{t+1-i} + \sum_{j=1}^q c_{t,j}\ell_{t+1-j}\right) \quad (3.7)$$

where

$$\begin{aligned} a_s &= a_{s+1} + zr - \frac{1}{2}\ln(1 - 2c_{s+1,1}) - \delta\mathcal{W}(x_{s+1}, \theta) + d\mathcal{V}(x_{s+1}, \theta) \\ b_{s,i} &= \begin{cases} b_{s+1,i+1} + \mathcal{V}(x_{s+1}, \theta)\beta_i & \text{for } 1 \leq i \leq p-1 \\ \mathcal{V}(x_{s+1}, \theta)\beta_i & \text{for } i = p \end{cases} \\ c_{s,j} &= \begin{cases} c_{s+1,j+1} + \mathcal{V}(x_{s+1}, \theta)\alpha_j & \text{for } 1 \leq j \leq q-1 \\ \mathcal{V}(x_{s+1}, \theta)\alpha_j & \text{for } j = q \end{cases} \end{aligned} \quad (3.8)$$

with

$$x_{s+1} = z\lambda + b_{s+1,1} + \frac{\frac{1}{2}z^2 + \gamma^2c_{s+1,1} - 2c_{s+1,1}\gamma z}{1 - 2c_{s+1,1}}.$$

The functions \mathcal{V} , \mathcal{W} are defined as follows

$$\mathcal{V}(x, \theta) = \frac{\theta x}{1 - \theta x} \quad \text{and} \quad \mathcal{W}(x, \theta) = \ln(1 - x\theta), \quad (3.9)$$

and the terminal conditions read $a_T = b_{T,i} = c_{T,j} = 0$ for $i = 1, \dots, p$ and $j = 1, \dots, q$.

Proof: See Appendix C.

The proof of the previous proposition provides us with the explicit form of the functions \mathcal{A} , \mathcal{B}_i , and \mathcal{C}_j for the general class of LHARG models. Following the reasoning in Appendix F in Gouriéroux and Jasiak (2006) one can derive the stationarity condition for RV_t process:

$$\theta (\beta_d + \beta_w + \beta_m + \gamma^2 (\alpha_d + \alpha_w + \alpha_m)) < 1. \quad (3.10)$$

Employing the SDF suggested in (2.9), which for LHARG takes the form

$$M_{s,s+1} = \frac{e^{-\nu_1 RV_{s+1} - \nu_2 y_{s+1}}}{\mathbb{E}^{\mathbb{P}} [e^{-\nu_1 RV_{s+1} - \nu_2 y_{s+1}} | \mathcal{F}_s]}, \quad (3.11)$$

and plugging the \mathcal{V} and \mathcal{W} functions in eq. (B.2) we readily obtain the risk-neutral MGF.

Corollary 4. *Under the risk-neutral measure \mathbb{Q} the MGF for LHARG has the form*

$$\varphi_{\nu_1 \nu_2}^{\mathbb{Q}}(t, T, z) = \exp \left(a_t^* + \sum_{i=1}^p b_{t,i}^* RV_{t+1-i} + \sum_{j=1}^q c_{t,j}^* \ell_{t+1-j} \right),$$

where

$$\begin{aligned}
a_s^* &= a_{s+1}^* + zr - \frac{1}{2} \ln(1 - 2c_{s+1,1}^*) - \delta\mathcal{W}(x_{s+1}^*, \theta) + \delta\mathcal{W}(y_{s+1}^*, \theta) \\
&\quad + d\mathcal{V}(x_{s+1}^*, \theta) - d\mathcal{V}(y_{s+1}^*, \theta) \\
b_{s,i}^* &= \begin{cases} b_{s+1,i+1}^* + (\mathcal{V}(x_{s+1}^*, \theta) - \mathcal{V}(y_{s+1}^*, \theta)) \beta_i & \text{for } 1 \leq i \leq p-1 \\ (\mathcal{V}(x_{s+1}^*, \theta) - \mathcal{V}(y_{s+1}^*, \theta)) \beta_i & \text{for } i = p \end{cases} \\
c_{s,i}^* &= \begin{cases} c_{s+1,i+1}^* + (\mathcal{V}(x_{s+1}^*, \theta) - \mathcal{V}(y_{s+1}^*, \theta)) \alpha_i & \text{for } 1 \leq i \leq q-1 \\ (\mathcal{V}(x_{s+1}^*, \theta) - \mathcal{V}(y_{s+1}^*, \theta)) \alpha_i & \text{for } i = q, \end{cases}
\end{aligned} \tag{3.12}$$

with

$$\begin{aligned}
x_{s+1}^* &= (z - \nu_2)\lambda + b_{s+1,1}^* - \nu_1 + \frac{\frac{1}{2}(z - \nu_2)^2 + \gamma^2 c_{s+1,1}^* - 2c_{s+1,1}^* \gamma(z - \nu_2)}{1 - 2c_{s+1,1}^*}, \\
y_{s+1}^* &= -\nu_2\lambda - \nu_1 + \frac{1}{2}\nu_2^2,
\end{aligned}$$

and terminal conditions $a_T^* = b_{T,i}^* = c_{T,j}^* = 0$ for $i = 1, \dots, p$ and $j = 1, \dots, q$.

Proof: See Appendix C.

The derivation of the no-arbitrage condition for LHARG readily follows from Proposition 2.

Corollary 5. *The LHARG model defined by eq.s (3.1) and (3.3) with SDF specified as in (3.11) satisfies the no-arbitrage condition if, and only if*

$$\nu_2 = \lambda + \frac{1}{2}. \tag{3.13}$$

Proof: See Appendix C.

To derive the price of vanilla options, for example, it is sufficient to know the MGF under the risk-neutral measure \mathbb{Q} which has been given in Corollary 4. However, for exotic instruments it is essential to know the log-return dynamics under \mathbb{Q} . The comparison of the physical and risk-neutral MGFs provides us the one-to-one mapping among the parameters which transforms the dynamics under \mathbb{Q}

into the dynamics under \mathbb{P} .

Proposition 6. *Under the risk-neutral measure \mathbb{Q} the realized variance still follows a LHARG process with parameters*

$$\begin{aligned}
\beta_d^* &= \frac{1}{1-\theta y^*} \beta_d, & \beta_w^* &= \frac{1}{1-\theta y^*} \beta_w, & \beta_m^* &= \frac{1}{1-\theta y^*} \beta_m, \\
\alpha_d^* &= \frac{1}{1-\theta y^*} \alpha_d, & \alpha_w^* &= \frac{1}{1-\theta y^*} \alpha_w, & \alpha_m^* &= \frac{1}{1-\theta y^*} \alpha_m, \\
\theta^* &= \frac{1}{1-\theta y^*} \theta, & \delta^* &= \delta, & \gamma^* &= \gamma + \lambda + \frac{1}{2}, \\
d^* &= \frac{1}{1-\theta y^*} d,
\end{aligned} \tag{3.14}$$

where $y^* = -\lambda^2/2 - \nu_1 + \frac{1}{8}$.

Proof: See Appendix D.

From the previous results we can write the simplified risk-neutral MGF which allows us to reduce the computational burden when computing the backward recurrences.

Corollary 7. *Under \mathbb{Q} , the MGF for the LHARG model has the same form as in (3.7)-(3.8) with equity risk premium $\lambda^* = -0.5$ and d^* , δ^* , θ^* , γ^* , α_l^* , β_l^* for $l = d, w, m$ as in (3.14).*

3.2 Particular cases

We now discuss two special cases of the model presented in the previous section. The first instance is the HARG model with Parabolic Leverage (P-LHARG) that we obtain setting $d = 0$ in (3.3), while the second model is a LHARG with zero-mean leverage (ZM-LHARG). The shape of the leverage in the latter has been inspired by the model of Christoffersen et al. (2008) but in the present context it is enriched by a heterogeneous structure

$$\begin{aligned}
\bar{\ell}_t^{(d)} &= \epsilon_t^2 - 1 - 2\epsilon_t \gamma \sqrt{\text{RV}_t}, \\
\bar{\ell}_t^{(w)} &= \frac{1}{4} \sum_{i=1}^4 \left(\epsilon_{t-i}^2 - 1 - 2\epsilon_{t-i} \gamma \sqrt{\text{RV}_{t-i}} \right), \\
\bar{\ell}_t^{(m)} &= \frac{1}{17} \sum_{i=5}^{21} \left(\epsilon_{t-i}^2 - 1 - 2\epsilon_{t-i} \gamma \sqrt{\text{RV}_{t-i}} \right).
\end{aligned}$$

The linear $\Theta(\mathbf{RV}_t, \mathbf{L}_t)$ in this case reads

$$\beta_d \mathbf{RV}_t^{(d)} + \beta_w \mathbf{RV}_t^{(w)} + \beta_m \mathbf{RV}_t^{(m)} + \alpha_d \bar{\ell}_t^{(d)} + \alpha_w \bar{\ell}_t^{(w)} + \alpha_m \bar{\ell}_t^{(m)}, \quad (3.15)$$

which can be reduced to the form (3.3) setting $d = -(\alpha_d + \alpha_w + \alpha_m)$, $\beta_l = \beta_l - \alpha_l \gamma^2$ for $l = d, w, m$. As will be more clear in the following section, the introduction of the less constrained leverage allows the process to explain a larger fraction of the skewness and kurtosis observed in real data. However, similarly to what has been discussed in Section 2 about Christoffersen et al. (2008), it is no more guaranteed that the non centrality parameter of the gamma distribution is positive definite. Nonetheless, in the next section we will provide numerical evidence of the effectiveness of our analytical results in describing a regularized version of this model.

3.3 Estimation and statistical properties

The estimation of the parameters characterizing the LHARG-RV family is greatly simplified by the use of Realized Volatility, which avoids any filtering procedure related to latent volatility processes. We compute the RV from tick-by-tick data for the S&P 500 Futures, from January 1, 1990 to December 31, 2007. As pointed out in Corsi et al. (2012), the choice of an adequate RV estimator is mandatory to reconcile the properties of LHARG-RV models with the realized volatility dynamics. Although we acknowledge the importance of the jump contribution in log-returns and realized volatility⁵, these components are not included in the class of models considered in this paper. In order to exclude the effect of jump on log-return and volatility process, from the empirical analysis, we employ the same methodology adopted by Corsi et al. (2012): i) we estimate the total variation of the log-prices using the Two-Scale estimator proposed by Zhang et al. (2005); ii) purify it from the jump component in prices by means of the Threshold Bipower variation method introduced in Corsi et al. (2010); iii) remove the most extreme observations (jumps) in the volatility series. Finally, to overcome the problem of neglecting the contribution to the volatility due to the overnight effect we rescale our RV estimator to match the unconditional mean of the squared close-to-close daily returns. Further details about the construction of the RV measure are given in Corsi et al. (2012).

⁵See for instance Andersen et al. (2007), Corsi et al. (2010), Barndorff-Nielsen and Shephard (2006)

The use of an RV proxy for the unobservable volatility allows us simply to employ a Maximum Likelihood Estimator (MLE) on historical data. Arguing as in Gouriéroux and Jasiak (2006), the conditional transition density for the LHARG-RV family is available in closed-form, and so the log-likelihood reads

$$l_t^T(\delta, \theta, d, \beta_d, \beta_w, \beta_m, \alpha_d, \alpha_w, \alpha_m, \gamma) = - \sum_{t=1}^T \left(\frac{\text{RV}_t}{\theta} + \Theta(\mathbf{RV}_{t-1}, \mathbf{L}_{t-1}) \right) + \sum_{t=1}^T \log \left(\sum_{k=1}^{\infty} \frac{\text{RV}_t^{\delta+k-1}}{\theta^{\delta+k} \Gamma(\delta+k)} \frac{\Theta(\mathbf{RV}_{t-1}, \mathbf{L}_{t-1})^k}{k!} \right)$$

where $\Theta(\mathbf{RV}_{t-1}, \mathbf{L}_{t-1})$ is given in eq. (3.3). To implement the MLE, we truncate the infinite sum on the right hand side to the 90th order as done in Corsi et al. (2012). Finally, the estimation of the market price of risk λ in the log-return eq. (3.2) is performed regressing the centred and normalized log-returns on the realized volatility, in a similar way to eq. (18) in Corsi et al. (2012). As a proxy for the risk-free rate r we employ the FED Fund rate.

In Table 1 we report the parameter values estimated via maximum likelihood for four different models, HARG, HARGL, P-LHARG, and ZM-LHARG⁶. We also show the parameter standard deviations (in parenthesis), and the value of the log-likelihood. All parameters are statistically significant except the monthly leverage component of P-LHARG. As already documented in Corsi (2009) and Corsi et al. (2012) the RV coefficients show a decreasing impact of the past lags on the present value of the RV. As far as the leverage components are concerned there is no evidence of a clear relation among different lags. Finally, it is worth noting that the inclusion of leverage with heterogeneous structure improves the likelihood of competitor HARG and HARGL models.

While we can ensure that P-LHARG model satisfies condition (2.5), for the ZM-LHARG model the relation (3.15) cannot be prevented from obtaining negative values. Since the ZM-LHARG is worth considering, we provide some numerical evidence supporting the analytical MGF as a reliable approximation of the MGF computed by simulation. We compare an extensive Monte Carlo (MC) simulation of the ZM-LHARG dynamics where the non centrality parameter is artificially bounded from below (by zero) with the analytical MGF computed according to Proposition 3. As the probability of obtaining a

⁶In Corsi et al. (2012) log-returns were expressed on a daily and percentage basis, whilst the realized volatility was on a yearly and percentage basis. Here, both log-returns and volatilities are on a daily and decimal basis.

Parameter	Model			
	HARG	HARGL	P-LHARG	ZM-LHARG
λ			2.005 (1.489)	
θ	1.149e-005 (1.036e-007)	1.116e-005 (9.864e-008)	1.068e-005 (9.466e-008)	1.117e-005 (9.484e-008)
δ	1.358 (0.04566)	1.395 (0.04646)	1.243 (0.0482)	1.78 (0.04319)
β_d	3.959e+004 (619.9)	2.993e+004 (1037)	2.429e+004 (439.4)	3.382e+004 (180.1)
β_w	2.451e+004 (1770)	2.796e+004 (1247)	2.317e+004 (1199)	2.542e+004 (225)
β_m	1.012e+004 (1644)	1.132e+004 (897)	1.322e+004 (1690)	1.338e+004 (142.7)
α_d	-	1.389e+004 (1235)	0.2376 (0.00113)	0.3991 (0.007164)
α_w	-	-	0.1194 (0.002058)	0.3446 (0.01162)
α_m	-	-	3.85e-006 (3.649e-006)	0.4034 (0.02082)
γ	-	-	223.7 (5.122)	134.8 (9.525)
ν_1	-2794	-3119	-3069	-3375
Log-likelihood	-25344	-25279	-25234	-25172
Persistence	0.8532	0.8495	0.8391	0.8116

Table 1: Maximum likelihood estimates, robust standard errors, and models' performance. The historical data for the HARG, HARGL, P-LHARG and ZM-LHARG models are given by the daily RV measure computed on tick-by-tick data for the S&P500 Futures (see Section 3.3). For all three models, the estimation period ranges from 1990-2005. The parameter ν_1 for each model has been fitted on option prices.

negative value for the non centrality of the gamma distribution is small (given the parameter values in Table 1), we can assess that the analytical MGF is a good approximation of the unknown MGF of the regularized ZM-LHARG. We fix the number of MC to 0.5×10^6 and consider six relevant maturities, one day ($T = 1$), one week ($T = 5$), one month ($T = 22$), one quarter ($T = 63$), six months ($T = 126$), and one year ($T = 256$). In the left column from top to bottom of Figure 1 we plot the MGF, the real and imaginary parts of the characteristic function under the physical measure, respectively, while in the right column we show the same quantities under the risk-neutral measure. The lines correspond

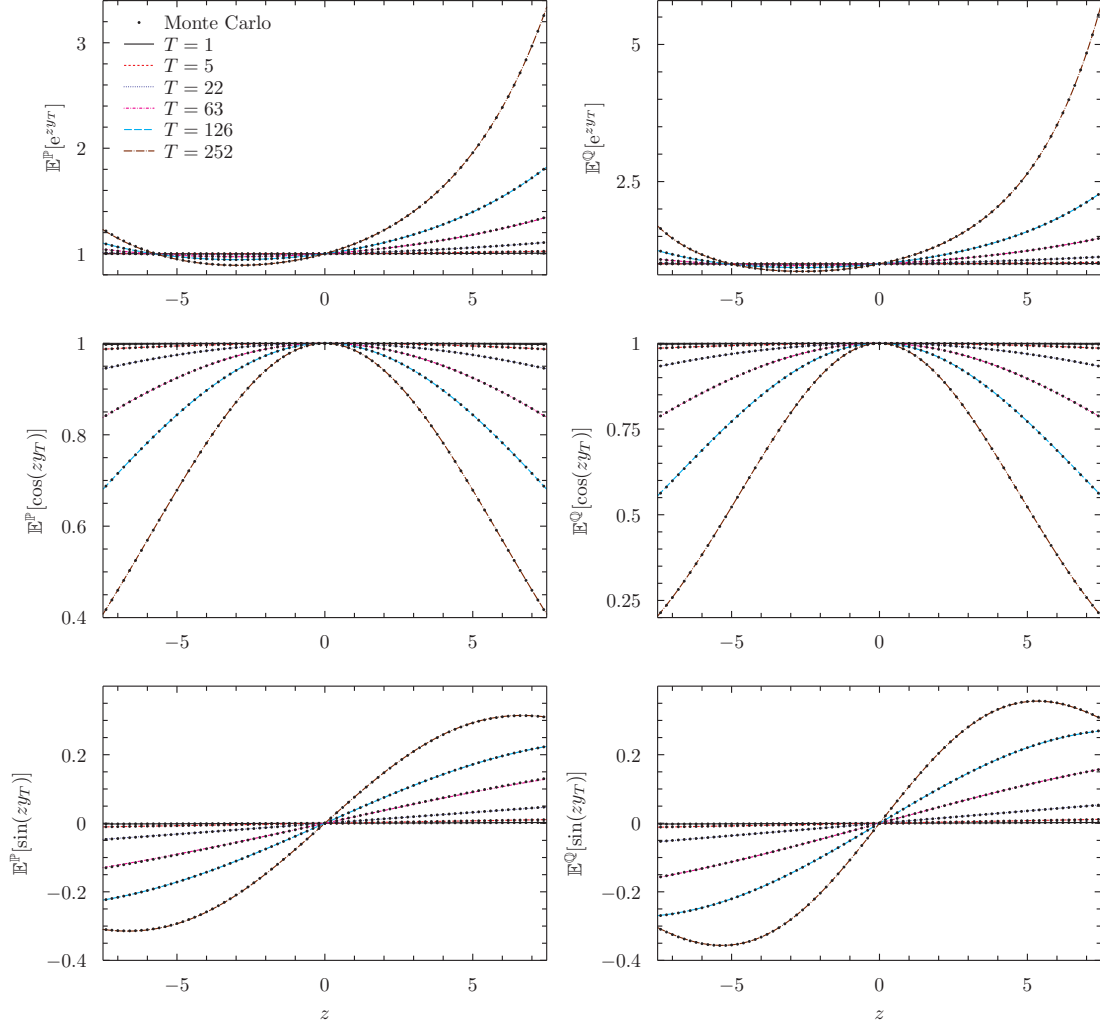


Figure 1: Left column, from top to bottom: MGF, real and imaginary parts of the characteristic function of the ZM-LHARG process under the physical measure \mathbb{P} . Right column, from top to bottom: MGF, real and imaginary parts of the Characteristic Function of the ZM-LHARG process under the risk-neutral measure \mathbb{Q} . The lines correspond to different maturities $T = 1, 5, 22, 63, 126, 252$, while points to Monte Carlo expected values; Monte Carlo error bars are smaller than the point size.

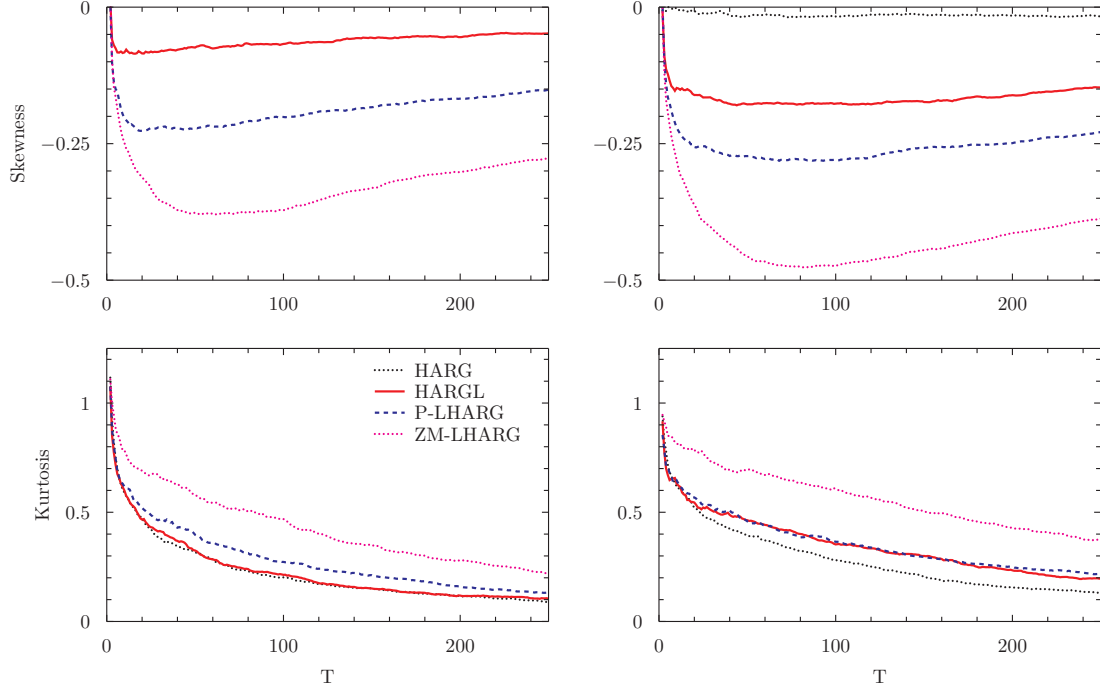


Figure 2: Left column, from top to bottom: skewness and excess kurtosis of the HARG, HARGL, P-LHARG, and ZM-LHARG processes under the physical measure \mathbb{P} . Right column: same as the left column, but under the risk-neutral measure.

to the analytical MGFs while the MC expectations are represented by points whose size is larger than the associated error bars. The quality of the agreement is extremely high. Moreover, the MC estimate of the probability associated with the event $\Theta(\mathbf{RV}_{t-1}, \mathbf{L}_{t-1}) < 0$ is 2×10^{-5} under \mathbb{P} , and 3×10^{-6} under \mathbb{Q} , confirming once more the reliability of the approximation.

Crucial ingredients for reproducing the shape of the implied volatility surface are the term structure of skewness and kurtosis generated by a given option pricing model. Therefore, in Figure 2 we compare the skewness and excess kurtosis associated to the four models HARG, HARGL, P-LHARG, and ZM-LHARG. We do not show the skewness for the HARG case under \mathbb{P} , since this model is not designed to explain the negative skewness. When moving to \mathbb{Q} , the genuine effect of the calibration of ν_1 is to induce a small negative skewness. It is worth noticing that for the LHARG-RV models adding the heterogeneous components not only improves the skewness upon the HARGL model, but also considerably increases the excess kurtosis. As far as under the \mathbb{Q} measure is concerned, the HARGL process catches up to the P-LHARG model both in terms of skewness and kurtosis, while the

ZM-LHARG always outperforms all the competitor models.

4 Valuation performance

4.1 Option pricing methodology

We apply the same option pricing procedure for both LHARG models, based on change of measure described by (3.11), and MGF formula given by (3.7)-(3.8). To derive risk-neutral dynamics we need to fix parameters of SDF, ν_1 and ν_2 . While the latter is determined by the no-arbitrage condition (Proposition 5), the former has to be calibrated on option prices. Following the same reasoning as Corsi et al. (2012), we perform the unconditional calibration of ν_1 such that the model generated and the average market IV for a one-year time to maturity at-the-money option coincide.

We employ the option pricing numerical method termed COS, introduced by Fang and Oosterlee (2008), and which has been proven to be efficient. The method is based on Fourier-cosine expansions and is available as long as the characteristic function of log-returns is known. The numerical algorithm exploits the close relation of the characteristic function with the series coefficients of Fourier-cosine expansion of the density function.

To sum up, we proceed pricing options following four steps: (i) estimation under the physical measure \mathbb{P} , (ii) unconditional calibration of the parameter ν_1 (iii) mapping of the parameters of the model estimated under \mathbb{P} into the parameters under \mathbb{Q} , and (iv) approximation of option prices by the COS method using the MGF formula in (3.7)-(3.8) with parameters under measure \mathbb{Q} .

4.2 Results

In this section we present empirical results for option pricing with LHARG models. For the sake of completeness we also compare LHARG models with the HARG model with no leverage and with the HARGL presented in Corsi et al. (2012). Since the functional form of the leverage of the latter model is not consistent with the current general framework, closed-form formulae for the MGF and for option

pricing are not available. Thus, we resort to numerical methodologies such as extensive Monte Carlo scenario generation.

We perform our analysis on European options, written on the S&P 500 index. The time series of option prices range from January 1, 1996 to December 31, 2004 and the data are downloaded from OptionMetrics. As is customary in the literature (see Barone-Adesi et al. (2008)), we filter out options with time to maturity less than 10 days or more than 365 days, implied volatility larger than 70%, and prices less than 5 cents. Following Corsi et al. (2012), we consider only out-of-the-money (OTM) put and call options for each Wednesday. Moreover we discard deep out-of-the-money options (moneyness larger than 1.2 for call options and less than 0.8 for put options). The procedure yields a total of 41536 observations.

As a measure of the option pricing performance we use the percentage Implied Volatility Root Mean Square Error ($RMSE_{IV}$) put forward by Renault (1997) and computed as

$$RMSE_{IV} = \sqrt{\frac{1}{N} \sum_{i=1}^N (IV_i^{mkt} - IV_i^{mod})^2} \times 100,$$

where N is the number of options, IV^{mkt} and IV^{mod} represent the market and model implied volatilities, respectively. An alternative performance measure corresponds to the Price Root Mean Square Error ($RMSE_P$) defined in a similar way as $RMSE_{IV}$ but with implied volatilities replaced by relative prices. We employ the $RMSE_{IV}$ measure since it tends to put more weight on OTM options, while the $RMSE_P$ emphasizes the importance of ATM options.

The result of our empirical analysis is that both LHARG models outperform competing RV-based stochastic volatility models (HARG, HARGL). Table 2 shows that P-LHARG outperforms HARG and HARGL by about 11% and 4%, respectively, in range of moneyness $0.9 < m < 1.1$ and by about 35% and 17%, respectively, in range of moneyness $0.8 < m < 1.2$. ZM-LHARG outperforms HARG and HARGL by about 14% and 7%, respectively, in range of moneyness $0.9 < m < 1.1$ and by about 30% and 22%, respectively, in range of moneyness $0.8 < m < 1.2$. ZM-LHARG improves

Implied Volatility RMSE

Model	Moneyness	
	$0.9 < m < 1.1$	$0.8 < m < 1.2$
HARGL	3.817	6.103
P-LHARG/HARGL	0.960	0.824
ZM-LHARG/HARGL	0.927	0.775
P-LHARG/HARG	0.891	0.746
ZM-LHARG/HARG	0.861	0.702
ZM-LHARG/P-LHARG	0.966	0.942

Table 2: Global option pricing performance on S&P500 out-of-the-money options from January 1, 1996 to December 31, 2004, computed with the RV measure estimated from 1990 to 2007.

We use the maximum likelihood parameter estimates from Table 1. First row: percentage implied volatility root mean squared error ($RMSE_{IV}$) of the HARGL model (benchmark) for different moneyness range. Second and subsequent rows: relative $RMSE_{IV}$ of the selected models.

P-LHARG by about 3% and 6%, in range of moneyness $0.9 < m < 1.1$ and $0.8 < m < 1.2$, respectively.

The detailed analysis in Table 3 confirms that the main advantage of LHARG models is the ability to capture the volatility smile. While the performance of all models in the at-the-money region is similar, both LHARG models significantly outperform HARG and HARGL in the range of moneyness $1.1 < m < 1.2$ and even more at the put side region $0.8 < m < 0.9$. This improvement stems from the higher flexibility of the model obtained with a multi-component leverage structure.

Panel B of Table 3 compares the performance of HARGL and P-LHARG. It shows the advantage of heterogeneous leverage compared to one-day binary leverage. Improvement for short maturities and moneyness $0.8 < m < 0.9$ reaches about 30%. For longer maturities and moneyness below 0.9, P-LHARG still outperforms HARGL, obtaining 3% – 8% smaller $RMSE_{IV}$. In the other moneyness regions the two models perform quite similarly.

The ratio between $RMSE_{IV}$ of HARGL and ZM-LHARG is displayed in Panel C of Table 3. The advantage of zero-mean heterogeneous leverage over one-day binary leverage is even stronger than in the case of P-LHARG. For all deep out-of-the-money options, the error generated by ZM-LHARG on implied volatility is smaller than in the case of HARGL. For short maturities and moneyness less than

Moneyness	Maturity			
	$\tau \leq 50$	$50 < \tau \leq 90$	$90 < \tau \leq 160$	$160 < \tau$
Panel A HARGL Implied Volatility RMSE				
$0.8 \leq m \leq 0.9$	16.140	8.267	6.803	5.516
$0.9 < m \leq 0.98$	5.598	4.411	3.939	3.872
$0.98 < m \leq 1.02$	2.681	2.780	2.872	3.261
$1.02 < m \leq 1.1$	3.061	2.783	2.789	3.070
$1.1 < m \leq 1.2$	5.412	3.262	3.217	3.206
Panel B P-LHARG/HARGL Implied Volatility RMSE				
$0.8 \leq m \leq 0.9$	0.691	0.917	0.939	0.973
$0.9 < m \leq 0.98$	0.892	0.925	0.975	1.020
$0.98 < m \leq 1.02$	0.988	1.025	1.071	1.087
$1.02 < m \leq 1.1$	0.975	1.069	1.120	1.114
$1.1 < m \leq 1.2$	0.799	0.949	0.975	1.048
Panel C ZM-LHARG/HARGL Implied Volatility RMSE				
$0.8 \leq m \leq 0.9$	0.648	0.824	0.844	0.902
$0.9 < m \leq 0.98$	0.841	0.870	0.928	1.001
$0.98 < m \leq 1.02$	0.988	1.035	1.073	1.096
$1.02 < m \leq 1.1$	0.961	1.041	1.089	1.101
$1.1 < m \leq 1.2$	0.784	0.849	0.854	0.972
Panel D P-LHARG/HARG Implied Volatility RMSE				
$0.8 \leq m \leq 0.9$	0.616	0.825	0.847	0.890
$0.9 < m \leq 0.98$	0.802	0.852	0.909	0.972
$0.98 < m \leq 1.02$	0.965	1.003	1.045	1.062
$1.02 < m \leq 1.1$	0.934	1.007	1.060	1.065
$1.1 < m \leq 1.2$	0.836	0.831	0.857	0.942
Panel E ZM-LHARG/HARG Implied Volatility RMSE				
$0.8 \leq m \leq 0.9$	0.577	0.741	0.761	0.825
$0.9 < m \leq 0.98$	0.757	0.801	0.865	0.954
$0.98 < m \leq 1.02$	0.965	1.013	1.047	1.070
$1.02 < m \leq 1.1$	0.920	0.981	1.030	1.052
$1.1 < m \leq 1.2$	0.821	0.743	0.751	0.874
Panel F ZM-LHARG/P-LHARG Implied Volatility RMSE				
$0.8 \leq m \leq 0.9$	0.937	0.898	0.899	0.927
$0.9 < m \leq 0.98$	0.943	0.940	0.952	0.981
$0.98 < m \leq 1.02$	1.000	1.010	1.002	1.008
$1.02 < m \leq 1.1$	0.986	0.974	0.972	0.989
$1.1 < m \leq 1.2$	0.982	0.894	0.876	0.927

Table 3: Option pricing performance on S&P500 out-of-the-money options from January 1, 1996 to December 31, 2004, computed with the RV measure estimated from 1990 to 2007.

We use the maximum likelihood parameter estimates from Table 1. Panel A: percentage implied volatility root mean squared error ($RMSE_{IV}$) of the HARGL model sorted by moneyness and maturity. Panels B to F: relative $RMSE_{IV}$ sorted by moneyness and maturity.

0.9 we obtain about 35% improvement. ZM-LHARG also performs better for deep out-of-the-money options on call side ($1.1 < m < 1.2$), where improvement varies from 3% to 22%.

Comparing model HARG without leverage with P-LHARG and ZM-LHARG in Panel D and Panel E, respectively, the superiority of the latter two is even more apparent. While the performance for the ATM options is comparable, the OTM options models with heterogeneous leverage generate considerable improvement over models without leverage. In the extreme case of OTM short maturity put options P-LHARG and ZM-LHARG produces errors which are smaller by 38% - 42%, respectively.

The last Panel (F) of Table 3 compares ZM-LHARG with P-LHARG. It shows that the ability of ZM-LHARG model to reproduce higher levels of skewness and kurtosis, permits this more flexible model to outperform the more constrained P-LHARG model. The outperformance is systematic, from ATM options, where $RMSE_{IV}$ is essentially the same, to deep out-of-the-money ($m > 1.1$ or $m < 0.9$) where $RMSE_{IV}$ is smaller by about 10%.

To summarize, the proposed LHARG models are better able to reproduce the IV level for OTM options, improving upon the considered HARG and HARGL models. The heterogeneous structure of the leverage thus appears to be a necessary ingredient for more accurate modeling of the IV smile.

5 Conclusions

In this paper we propose a very general framework which includes a wide class of discrete time models featuring multiple components structure in both volatility and leverage and a flexible pricing kernel with multiple risk premia. Within this framework we characterize the recursive formulae for the analytical MGF under \mathbb{P} and \mathbb{Q} , the change of measure obtained using a flexible exponentially affine SDF, and the analytical no-arbitrage conditions. Then, we focus on a specific new class of realized volatility models, named LHARG, which extend the HARGL model of Corsi et al. (2012) to incorporate analytically tractable heterogeneous leverage structures with multiple components. This feature allows for higher skewness and kurtosis which enables LHARG models to outperform other RV-based stochastic volatility models (HARG, HARGL) in pricing out-of-the-money options. The

proposed general framework can be employed to include several additional features like jumps in log-return and realized volatility, overnight effect, combination of GARCH and realized volatility models, and switching in volatility regimes.

Acknowledgements

All authors warmly thank Nicola Fusari and Davide La Vecchia for helpful comments and fruitful discussions and anonymous referees for helpful remarks. Additionally, we would like to thank Peter Lieberman for the help in text editing.

References

- Adrian, T., Rosenberg, J., 2007. Stock returns and volatility: Pricing the long-run and short-run components of market risk. *Journal of Finance*, forthcoming.
- Andersen, T. G., Bollerslev, T., Diebold, F., 2007. Roughing it up: Including jump components in the measurement, modeling and forecasting of return volatility. *Review of Economics and Statistics* 89, 701–720.
- Andersen, T. G., Bollerslev, T., Diebold, F., Labys, P., 2001. The distribution of realized exchange rate volatility. *Journal of the American Statistical Association* 96, 42–55.
- Andersen, T. G., Bollerslev, T., Diebold, F., Labys, P., 2003. Modeling and forecasting realized volatility. *Econometrica* 71, 579–625.
- Barndorff-Nielsen, O. E., Shephard, N., 2001. Non-Gaussian Ornstein-Uhlenbeck-based models and some of their uses in financial economics. *Journal of the Royal Statistical Society Series B* (63), 167–241.
- Barndorff-Nielsen, O. E., Shephard, N., 2002a. Econometric analysis of realized volatility and its use in estimating stochastic volatility models. *Journal of the Royal Statistical Society: Series B (Statistical Methodology)* 64, 253–280.
- Barndorff-Nielsen, O. E., Shephard, N., 2002b. Estimating quadratic variation using realized variance. *Journal of Applied Econometrics* 17, 457–477.
- Barndorff-Nielsen, O. E., Shephard, N., 2005. How accurate is the asymptotic approximation to the distribution of realized volatility? In: Andrews, D. W. F., Stock, J. H. (Eds.), *Identification and Inference for Econometric Models. A Festschrift in Honour of T.J. Rothenberg*. Cambridge University Press, pp. 306–331.
- Barndorff-Nielsen, O. E., Shephard, N., 2006. Econometrics of testing for jumps in financial economics using bipower variation. *Journal of financial Econometrics* 4 (1), 1–30.
- Barone-Adesi, G., Engle, R., Mancini, L., 2008. A GARCH option pricing with filtered historical simulation. *Review of Financial Studies* 21, 1223–1258.
- Bates, D., 1996. Jumps and stochastic volatility: Exchange rate processes implicit in Deutsche Mark options. *Review of Financial Studies* 9, 69–107.
- Bates, D., 2000. Post-'87 crash fears in the S&P 500 futures option market. *Journal of Econometrics* 94 (1-2), 181–238.
- Bates, D., 2006. Maximum likelihood estimation of latent affine processes. *Review of Financial Studies* 19, 909–965.

- Bates, D. S., 2012. US stock market crash risk, 1926–2010. *Journal of Financial Economics* 105 (2), 229–259.
- Bollerslev, T., 1996. Generalize Autoregressive Conditional Heteroskedasticity. *Journal of Econometrics* 31, 307–327.
- Bollerslev, T., Wright, J., 2001. Volatility forecasting, high-frequency data, and frequency domain inference. *Review of Economics and Statistics* 83, 596–602.
- Broadie, M., Chernov, M., Johannes, M., 2007. Model specification and risk premia: Evidence from futures options. *Journal of Finance* 62, 1453–1490.
- Calvet, L., Fisher, A., 2004. How to forecast long-run volatility: Regime switching and the estimation of multifractal processes. *Journal of Financial Econometrics* 2 (1), 49–83.
- Christoffersen, P., Feunou, B., Jacobs, K., Meddahi, N., 2014. The economic value of realized volatility: Using high-frequency returns for option valuation. *Journal of Financial and Quantitative Analysis* 49 (03), 663–697.
- Christoffersen, P., Heston, S., Jacobs, K., 2013. Capturing option anomalies with a variance-dependent pricing kernel. *Review of Financial Studies*, hht033.
- Christoffersen, P., Jacobs, K., Ornathanalai, C., Wang, Y., 2008. Option valuation with long-run and short-run volatility components. *Journal of Financial Economics* 90 (3), 272–297.
- Comte, F., Renault, E., 1998. Long memory in continuous time stochastic volatility models. *Mathematical Finance* 8, 291–323.
- Corsi, F., 2009. A simple approximate long-memory model of realized-volatility. *Journal of Financial Econometrics* 7, 174–196.
- Corsi, F., Fusari, N., La Vecchia, D., 2012. Realizing smiles: Options pricing with realized volatility. *Journal of Financial Economics*.
- Corsi, F., Pirino, D., Renò, R., 2010. Threshold bipower variation and the impact of jumps on volatility forecasting. *Journal of Econometrics* 159 (2), 276 – 288.
- Corsi, F., Renò, R., 2012. Discrete-time volatility forecasting with persistent leverage effect and the link with continuous-time volatility modeling. *Journal of Business & Economic Statistics* 30 (3), 368–380.
- Duan, J. C., 1995. The GARCH option pricing model. *Mathematical Finance* 5, 13–32.
- Engle, R., 1982. Autoregressive conditional heteroskedasticity with estimation of the variance of UK inflation. *Econometrica* 50, 987–1008.
- Engle, R., Lee, G., 1999. A permanent and transitory component model of stock return volatility, in ed. R. Engle and H. White *Cointegration, Causality, and Forecasting: A Festschrift in Honor of Clive W. J. Granger*.
- Eraker, B., 2004. Do stock prices and volatility jump? Reconciling evidence from spot and option prices. *Journal of Finance* 59, 1367–1403.
- Eraker, B., Johannes, M., Polson, N., 2003. The impact of jumps in volatility and returns. *Journal of Finance* 58, 1269–1300.
- Fang, F., Oosterlee, C. W., 2008. A novel pricing method for european options based on Fourier-Cosine series expansions. *SIAM Journal on Scientific Computing* 31, 826–848.
- Fouque, J.-P., Lorig, M. J., 2011. A fast mean-reverting correction to Heston’s stochastic volatility model. *SIAM Journal on Financial Mathematics* 2 (1), 221–254.
- Gagliardini, P., Gouriéroux, C., Renault, 2011. Efficient derivative pricing by extended method of moments. *Econometrica* Forthcoming.

- Glosten, L. R., Jagannathan, R., Runkle, D., 1993. On the relation between the expected value and the volatility of the nominal excess return on stocks. *Journal of Finance* 48, 1779–1801.
- Gourieroux, C., Jasiak, J., 2006. Autoregressive gamma process. *Journal of Forecasting* 25, 129–152.
- Gourieroux, C., Monfort, A., 2007. Econometric specification of stochastic discount factor models. *Journal of Econometrics* 136 (2), 509–530.
- Heston, L. S., 1993. Options with stochastic volatility with applications to bond and currency options. *The Review of Financial Studies* 6, 327–343.
- Heston, S., Nandi, S., 2000. A closed-form GARCH option valuation model. *Review Financial Studies* 13 (3), 585–625.
- Huang, X. Wu, L., 2004. Specification analysis of option pricing models based on time-changed Lévy processes. *Journal of Finance* 59, 1405–1439.
- Li, G., Zhang, C., 2010. On the number of state variables in options pricing. *Management Science* 56 (11), 2058.
- Merton, R. C., 1976. Option pricing when underlying stock returns are discontinuous. *Journal of Financial Economics* 3, 125–144.
- Merton, R. C., 1980. On estimating the expected return on the market: An exploratory investigation. *Journal of Financial Economics* 8, 323–61.
- Muller, U., Dacorogna, M., Davé, R., Olsen, R., Pictet, O., von Weizsacker, J., 1997. Volatilities of different time resolutions - analyzing the dynamics of market components. *Journal of Empirical Finance* 4, 213–239.
- Nelson, D. B., 1991. Conditional heteroskedasticity in asset returns: A new approach. *Econometrica* 59, 347–370.
- Pan, J., 2002. The jump-risk premia implicit in options: Evidence from an integrated time-series study. *Journal of Financial Economics* 63, 3–50.
- Renault, E., 1997. Econometric models of option pricing errors. *Econometric Society Monographs* 28, 223–278.
- Scharth, M., Medeiros, M. C., 2009. Asymmetric effects and long memory in the volatility of Dow Jones stocks. *International Journal of Forecasting* 25 (2), 304–327.
- Zhang, L., Aït-Sahalia, Y., Mykland, P. A., 2005. A tale of two time scales: Determining integrated volatility with noisy high frequency data. *Journal of the American Statistical Association* 100, 1394–1411.

A No arbitrage condition

The no-arbitrage conditions are

$$\mathbb{E}^{\mathbb{P}} [M_{s,s+1} | \mathcal{F}_s] = 1 \quad \text{for } s \in \mathbb{Z}_+, \quad (\text{A.1})$$

$$\mathbb{E}^{\mathbb{P}} [M_{s,s+1} e^{y_{s+1}} | \mathcal{F}_s] = e^r \quad \text{for } s \in \mathbb{Z}_+. \quad (\text{A.2})$$

The first condition is satisfied by definition of $M_{s,s+1}$. Before moving to the second condition, let us rewrite the SDF as

$$\begin{aligned} M_{s,s+1} &= \frac{e^{-\boldsymbol{\nu}_1 \cdot \mathbf{f}_{s+1} - \nu_2 y_{s+1}}}{\mathbb{E}^{\mathbb{P}} [e^{-\boldsymbol{\nu}_1 \cdot \mathbf{f}_{s+1} - \nu_2 y_{s+1}} | \mathcal{F}_s]} \\ &= \exp \left(\begin{aligned} & -\mathcal{A}(-\nu_2, -\boldsymbol{\nu}_1, \mathbf{0}) - \sum_{i=1}^p \mathcal{B}_i(-\nu_2, -\boldsymbol{\nu}_1, \mathbf{0}) \cdot \mathbf{f}_{s+1-i} \\ & - \sum_{i=1}^q \mathcal{C}_i(-\nu_2, -\boldsymbol{\nu}_1, \mathbf{0}) \cdot \boldsymbol{\ell}_{s+1-i} - \boldsymbol{\nu}_1 \cdot \mathbf{f}_{s+1} - \nu_2 y_{s+1} \end{aligned} \right), \end{aligned} \quad (\text{A.3})$$

where $\boldsymbol{\nu}_1 = (\nu_1, \dots, \nu_1)^t \in \mathbb{R}^k$ and functions \mathcal{A} , \mathcal{B}_i and \mathcal{C}_j are defined in (2.6). Finally, the condition (A.2) reads

$$\begin{aligned} & \mathbb{E}^{\mathbb{P}} [\exp(-\boldsymbol{\nu}_1 \cdot \mathbf{f}_{s+1} + (1 - \nu_2) y_{s+1}) | \mathcal{F}_s] \\ &= \exp \left(r + \mathcal{A}(-\nu_2, -\boldsymbol{\nu}_1, \mathbf{0}) + \sum_{i=1}^p \mathcal{B}_i(-\nu_2, -\boldsymbol{\nu}_1, \mathbf{0}) \cdot \mathbf{f}_{s+1-i} + \sum_{j=1}^q \mathcal{C}_j(-\nu_2, -\boldsymbol{\nu}_1, \mathbf{0}) \cdot \boldsymbol{\ell}_{s+1-j} \right). \end{aligned} \quad (\text{A.4})$$

Using once again the relation (2.6) we obtain the no-arbitrage conditions.

B Computation of MGF

Under the risk-neutral measure \mathbb{Q} the MGF of the log-returns $y_{t,T} = \log(S_T/S_t)$ conditional on the information available at time t is of the form

$$\varphi_{\nu_1 \nu_2}^{\mathbb{Q}}(t, T, z) = e^{a_t^* + \sum_{i=1}^p \mathbf{b}_{t,i}^* \cdot \mathbf{f}_{t+1-i} + \sum_{j=1}^q \mathbf{c}_{t,j}^* \cdot \boldsymbol{\ell}_{t+1-j}}, \quad (\text{B.1})$$

where

$$\begin{aligned} a_s^* &= a_{s+1}^* + \mathcal{A}(z - \nu_2, \mathbf{b}_{s+1,1}^* - \boldsymbol{\nu}_1, \mathbf{c}_{s+1,1}^*) - \mathcal{A}(-\nu_2, -\boldsymbol{\nu}_1, \mathbf{0}) \\ \mathbf{b}_{s,i}^* &= \begin{cases} \mathbf{b}_{s+1,i+1}^* + \mathcal{B}_i(z - \nu_2, \mathbf{b}_{s+1,1}^* - \boldsymbol{\nu}_1, \mathbf{c}_{s+1,1}^*) - \mathcal{B}_i(-\nu_2, -\boldsymbol{\nu}_1, \mathbf{0}) & \text{if } 1 \leq i \leq p-1 \\ \mathcal{B}_i(z - \nu_2, \mathbf{b}_{s+1,1}^* - \boldsymbol{\nu}_1, \mathbf{c}_{s+1,1}^*) - \mathcal{B}_i(-\nu_2, -\boldsymbol{\nu}_1, \mathbf{0}) & \text{if } i = p \end{cases} \\ \mathbf{c}_{s,j}^* &= \begin{cases} \mathbf{c}_{s+1,j+1}^* + \mathcal{C}_j(z - \nu_2, \mathbf{b}_{s+1,1}^* - \boldsymbol{\nu}_1, \mathbf{c}_{s+1,1}^*) - \mathcal{C}_j(-\nu_2, -\boldsymbol{\nu}_1, \mathbf{0}) & \text{if } 1 \leq j \leq q-1 \\ \mathcal{C}_j(z - \nu_2, \mathbf{b}_{s+1,1}^* - \boldsymbol{\nu}_1, \mathbf{c}_{s+1,1}^*) - \mathcal{C}_j(-\nu_2, -\boldsymbol{\nu}_1, \mathbf{0}) & \text{if } j = q \end{cases} \end{aligned} \quad (\text{B.2})$$

and $a_T^* = 0$, $\mathbf{b}_{T,i}^* = \mathbf{c}_{T,j}^* = \mathbf{0} \in \mathbb{R}^k$ for $i = 1, \dots, p$ and $j = 1, \dots, q$.

The above relation can be derived using the expression for the SDF given in (A.3), repeatedly and using the tower law of conditional expectation we obtain

$$\begin{aligned}
& \varphi_{\nu_1 \nu_2}^{\mathbb{Q}}(t, T, z) \\
&= \mathbb{E}^{\mathbb{Q}} [e^{zy_{t,T}} | \mathcal{F}_t] \\
&= \mathbb{E}^{\mathbb{P}} [M_{t,t+1} \dots M_{T-1,T} e^{zy_{t,T}} | \mathcal{F}_t] \\
&= \mathbb{E}^{\mathbb{P}} \left[M_{t,t+1} \dots M_{T-2,T-1} e^{zy_{t,T-1}} \mathbb{E}^{\mathbb{P}} [M_{T-1,T} e^{zy_T} | \mathcal{F}_{T-1}] | \mathcal{F}_t \right] \\
&= \mathbb{E}^{\mathbb{P}} \left[M_{t,t+1} \dots M_{T-2,T-1} e^{zy_{t,T-1} - \mathcal{A}(-\nu_2, -\nu_1, \mathbf{0}) - \sum_{i=1}^p \mathbf{B}_i(-\nu_2, -\nu_1, \mathbf{0}) \cdot \mathbf{f}_{T-i}} \right. \\
&\quad \left. \times e^{-\sum_{j=1}^q \mathbf{C}_j(-\nu_2, -\nu_1, \mathbf{0}) \cdot \boldsymbol{\ell}_{T-i}} \mathbb{E}^{\mathbb{P}} [e^{-\nu_1 \cdot \mathbf{f}_T + (z - \nu_2) y_T} | \mathcal{F}_{T-1}] | \mathcal{F}_t \right] \\
&= \mathbb{E}^{\mathbb{P}} \left[M_{t,t+1} \dots M_{T-2,T-1} e^{zy_{t,T-1} + \mathcal{A}(z - \nu_2, -\nu_1, \mathbf{0}) - \mathcal{A}(-\nu_2, -\nu_1, \mathbf{0})} \right. \\
&\quad \left. \times e^{\sum_{i=1}^p [\mathbf{B}_i(z - \nu_2, -\nu_1, \mathbf{0}) - \mathbf{B}_i(-\nu_2, -\nu_1, \mathbf{0})] \cdot \mathbf{f}_{T-i} + \sum_{j=1}^q [\mathbf{C}_j(z - \nu_2, -\nu_1, \mathbf{0}) - \mathbf{C}_j(-\nu_2, -\nu_1, \mathbf{0})] \cdot \boldsymbol{\ell}_{T-j}} | \mathcal{F}_t \right] \\
&= \mathbb{E}^{\mathbb{P}} \left[M_{t,t+1} \dots M_{T-2,T-1} e^{zy_{t,T-1} + a_{T-1}^* + \sum_{i=1}^p \mathbf{b}_{T-1,i}^* \cdot \mathbf{f}_{T-i} + \sum_{j=1}^q \mathbf{c}_{T-1,j}^* \cdot \boldsymbol{\ell}_{T-j}} | \mathcal{F}_t \right] \\
&= \mathbb{E}^{\mathbb{P}} \left[M_{t,t+1} \dots M_{T-3,T-2} e^{zy_{t,T-2} + a_{T-1}^*} \right. \\
&\quad \left. \times \mathbb{E}^{\mathbb{P}} [M_{T-2,T-1} e^{zy_{T-1} + \sum_{i=1}^p \mathbf{b}_{T-1,i}^* \cdot \mathbf{f}_{T-i} + \sum_{j=1}^q \mathbf{c}_{T-1,j}^* \cdot \boldsymbol{\ell}_{T-j}} | \mathcal{F}_{T-2}] | \mathcal{F}_t \right] \\
&= \dots \\
&= e^{a_t^* + \sum_{i=1}^p \mathbf{b}_{t,i}^* \cdot \mathbf{f}_{t+1-i} + \sum_{j=1}^q \mathbf{c}_{t,j}^* \cdot \boldsymbol{\ell}_{t+1-j}} .
\end{aligned}$$

Finally, the MGF under \mathbb{P} readily follows by noticing that for $\nu_1 = \nu_2 = 0$ the SDF reduces to one, therefore $\varphi^{\mathbb{P}}(t, T, z) = \varphi_{00}^{\mathbb{Q}}(t, T, z)$.

C MGF computation for LHARG and no-arbitrage conditions

Firstly, we derive the explicit form of the scalar functions \mathcal{A} , \mathcal{B}_i and \mathcal{C}_j . In the case of LHARG we have $\mathbf{f}_t = \mathbf{R}V_t$. Then,

$$\begin{aligned}
& \mathbb{E}^{\mathbb{P}} \left[e^{zy_s + b\mathbf{R}V_s + c\boldsymbol{\ell}_s} | \mathcal{F}_{s-1} \right] \\
&= e^{zr} \mathbb{E}^{\mathbb{P}} \left[e^{(z\lambda + b)\mathbf{R}V_s} \mathbb{E}^{\mathbb{P}} \left[e^{z\sqrt{\mathbf{R}V_s} \epsilon_s + c(\epsilon_s - \gamma\sqrt{\mathbf{R}V_s})^2} | \mathbf{R}V_s \right] | \mathcal{F}_{s-1} \right] \\
&= e^{zr} \mathbb{E}^{\mathbb{P}} \left[e^{\left(z\lambda + b - \frac{z^2}{4c} + \gamma z \right) \mathbf{R}V_s} \mathbb{E}^{\mathbb{P}} \left[e^{c(\epsilon_s - (\gamma - \frac{z}{2c})\sqrt{\mathbf{R}V_s})^2} | \mathbf{R}V_s \right] | \mathcal{F}_{s-1} \right] \tag{C.1} \\
&= e^{zr - \frac{1}{2} \ln(1-2c)} \mathbb{E}^{\mathbb{P}} \left[e^{\left(z\lambda + b + \frac{\frac{1}{2}z^2 + \gamma^2 c - 2c\gamma z}{1-2c} \right) \mathbf{R}V_s} | \mathcal{F}_{s-1} \right] .
\end{aligned}$$

In the last equality we have used the fact that if $Z \sim \mathcal{N}(0, 1)$ then

$$\mathbb{E} \left[\exp \left(x(Z + y)^2 \right) \right] = \exp \left(-\frac{1}{2} \ln(1 - 2x) + \frac{xy^2}{1 - 2x} \right). \quad (\text{C.2})$$

Using eq.s (8)-(9) from Gouriéroux and Jasiak (2006) we obtain

$$\begin{aligned} & \mathbb{E}^{\mathbb{P}} \left[e^{zy_s + bRV_s + c\ell_s} | \mathcal{F}_{s-1} \right] \\ &= \exp \left[zr - \frac{1}{2} \ln(1 - 2c) - \delta\mathcal{W}(x, \theta) + \mathcal{V}(x, \theta) \left(d + \sum_{i=1}^p \beta_i RV_{s-i} + \sum_{j=1}^q \alpha_j \ell_{s-j} \right) \right], \end{aligned} \quad (\text{C.3})$$

where

$$\mathcal{V}(x, \theta) = \frac{\theta x}{1 - \theta x}, \quad \mathcal{W}(x, \theta) = \ln(1 - x\theta),$$

and

$$x(z, b, c) = z\lambda + b + \frac{\frac{1}{2}z^2 + \gamma^2 c - 2c\gamma z}{1 - 2c}.$$

From a direct inspection of the relation (2.6), we conclude that

$$\begin{aligned} \mathcal{A}(z, b, c) &= zr - \frac{1}{2} \ln(1 - 2c) - \delta\mathcal{W}(x, \theta) + d\mathcal{V}(x, \theta), \\ \mathcal{B}_i(z, b, c) &= \mathcal{V}(x, \theta)\beta_i, \\ \mathcal{C}_j(z, b, c) &= \mathcal{V}(x, \theta)\alpha_j. \end{aligned} \quad (\text{C.4})$$

Finally, plugging the above expressions for \mathcal{A} , \mathcal{B}_i and \mathcal{C}_j in eq. (B.2) we readily obtain the recurrence relations under the physical and risk-neutral measures. The no-arbitrage condition similarly follows from formulae (C.4) and relations (2.10) noticing that it is sufficient to impose

$$x(1 - \nu_2, -\nu_1, 0) = x(-\nu_2, -\nu_1, 0).$$

D Risk-neutral dynamics

To derive the mapping of the parameters under which the risk-neutral MGF is formally equivalent to the physical MGF, we need to compare eq. (3.12) to eq. (3.8). In particular we have to find a set of starred parameters for which the recursions under \mathbb{P} correspond to the expressions under \mathbb{Q} . More precisely, after defining

$$x_{s+1}^{**} = z\lambda^* + b_{s+1,1}^* + \frac{\frac{1}{2}z^2 + (\gamma^*)^2 c_{s+1,1}^* - 2c_{s+1,1}^* \gamma^* z}{1 - 2c_{s+1,1}^*},$$

the following relations have to hold

$$\delta (\mathcal{W}(x_{s+1}^*, \theta) - \mathcal{W}(y^*, \theta)) = \delta^* \mathcal{W}(x_{s+1}^{**}, \theta^*), \quad (\text{D.1})$$

$$\beta_i (\mathcal{V}(x_{s+1}^*, \theta) - \mathcal{V}(y^*, \theta)) = \beta_i^* \mathcal{V}(x_{s+1}^{**}, \theta^*), \quad (\text{D.2})$$

$$\alpha_j (\mathcal{V}(x_{s+1}^*, \theta) - \mathcal{V}(y^*, \theta)) = \alpha_j^* \mathcal{V}(x_{s+1}^{**}, \theta^*), \quad (\text{D.3})$$

$$d (\mathcal{V}(x_{s+1}^*, \theta) - \mathcal{V}(y^*, \theta)) = d^* \mathcal{V}(x_{s+1}^{**}, \theta^*), \quad (\text{D.4})$$

with $y^* = -\lambda^2/2 - \nu_1 + \frac{1}{8}$. Eq. (D.1) can be rewritten as

$$\delta \log \left[1 - \frac{\theta}{1 - \theta y^*} (x_{s+1}^* - y^*) \right] = \delta^* \log (1 - \theta^* x_{s+1}^{**}),$$

from which we obtain the sufficient conditions $\delta^* = \delta$, $\theta^* = \theta/(1 - \theta y^*)$, and $x_{s+1}^* - y^* = x_{s+1}^{**}$. It is possible to verify by substitution that the latter relation is satisfied posing $\lambda^* = -1/2$ and $\gamma^* = \gamma + \lambda + 1/2$. The relation (D.2) is equivalent to

$$\frac{\beta_i}{1 - \theta y^*} \frac{\theta}{1 - \theta y^*} \frac{x_{s+1}^* - y^*}{[1 - \theta/(1 - \theta y^*) (x_{s+1}^* - y^*)]} = \beta_i^* \frac{\theta^* x_{s+1}^{**}}{1 - \theta^* x_{s+1}^{**}},$$

which implies $\beta_i^* = \beta_i/(1 - \theta y^*)$. Similar reasoning applies for eq.s (D.3) and (D.4).