



City Research Online

City St George's, University of London

Citation: Richardson, M., McCabe, R. & Priebe, S. (2013). Are attitudes towards medication adherence associated with medication adherence behaviours among patients with psychosis? A systematic review and meta analysis. *Social Psychiatry and Psychiatric Epidemiology*, 48(4), pp. 649-657. doi: 10.1007/s00127-012-0570-1

This is the accepted version of the paper.

This version of the publication may differ from the final published version. To cite this item please consult the publisher's version.

Permanent repository link: <https://openaccess.city.ac.uk/id/eprint/21764/>

Link to published version: <https://doi.org/10.1007/s00127-012-0570-1>

Copyright and Reuse: Copyright and Moral Rights remain with the author(s) and/or copyright holders. Copies of full items can be used for personal research or study, educational, or not-for-profit purposes without prior permission or charge, unless otherwise indicated, provided that the authors, title and full bibliographic details are credited, a hyperlink and/or URL is given for the original metadata page and the content is not changed in any way. For full details of reuse please refer to [City Research Online policy](#).

Editorial Manager(tm) for Social Psychiatry and Psychiatric Epidemiology
Manuscript Draft

Manuscript Number: SPPE-D-11-00310

Title: Do attitudes towards medication adherence predict medication adherence behaviours among patients with psychosis? a systematic review and meta analysis

Article Type: Original Paper

Keywords: medication adherence; attitudes; psychoses.

Corresponding Author: michelle richardson

Corresponding Author's Institution:

First Author: michelle richardson

Order of Authors: michelle richardson;Stefan Priebe

Abstract: Background

Studies have shown patient attitudes to be an important predictor for health related behaviours including medication adherence. It is less clear whether patient attitudes also predict medication adherence among patients with psychoses.

Method

We conducted a systematic review and meta analysis of the data of studies that tested the association of attitude measures with medication adherence among patients with psychoses.

14 studies conducted between 1980 and 2010 were included.

Results

Results show a small to moderate mean weighted effect size ($r = .25$ and $.26$ for Pearson and Spearman correlations, respectively).

Conclusions

Theory based interventions that target potentially modifiable attitude components are needed to assess the relationship between positive patient attitudes and adherence behaviours among patients with psychoses.

1
2
3 Do attitudes towards medication adherence predict medication adherence behaviours among
4 patients with psychosis? a systematic review and meta analysis
5
6
7
8
9

10 Authors: Michelle Richardson¹, Stefan Priebe²
11
12
13
14

15 ¹Universtiy College London, Research Department of Clinical, Education and Health
16 Psychology, 1-19 Torrington Place, London, WC1E 7HB
17
18
19

20 ²Unit for Social and Community Psychiatry, Barts and the London School of Medicine,
21 Queen Mary University of London, London, UK.
22
23
24

25 Corresponding Author: Dr., Michelle Richardson University College London, email:
26 michelle.richardson@ucla.c.uk, Tel: 07852223170
27
28
29
30
31
32
33
34
35
36
37
38
39
40
41
42
43
44
45
46
47
48
49
50
51
52
53
54
55
56
57
58
59
60
61
62
63
64
65

Abstract

Background

Studies have shown patient attitudes to be an important predictor for health related behaviours including medication adherence. It is less clear whether patient attitudes also predict medication adherence among patients with psychoses.

Method

We conducted a systematic review and meta analysis of the data of studies that tested the association of attitude measures with medication adherence among patients with psychoses. 14 studies conducted between 1980 and 2010 were included.

Results

Results show a small to moderate mean weighted effect size ($r^+ = .25$ and $.26$ for Pearson and Spearman correlations, respectively).

Conclusions

Theory based interventions that target potentially modifiable attitude components are needed to assess the relationship between positive patient attitudes and adherence behaviours among patients with psychoses.

Key words: medication adherence, attitudes, psychoses,

1
2
3
4
5 Do attitudes towards medication adherence predict medication adherence behaviours among
6 patients with psychosis? a systematic review and meta analysis
7
8

9 10 **1. Introduction**

11
12
13
14
15 Failure to adhere to medication is an important issue among all disease groups, with
16 costly implications both for the patient and health service providers. Among patients with
17 psychoses, non-adherence rates are particularly high, with reports ranging from 20% to 89%
18 [1]. It has been proposed that patients with psychoses lack insight into their illness, and that
19 this influences adherence to medication regimes [2]. Non-adherence to antipsychotic
20 medication may not only enhance distressing symptoms, and the likelihood of relapse but
21 negatively influence the patients' quality of life and long-term prognosis [3]. Moreover,
22 failure to adhere to prescribed regimens may result in longer and more frequent periods of
23 inpatient care, leading to increases in the overall cost of care [4].
24
25
26
27
28
29
30
31
32
33
34
35
36

37 Accumulating evidence suggests that more positive patient attitudes towards
38 medication adherence lead to better adherence behaviours among various populations
39 including patients with psychoses [5]. This observation coincides with increasing emphasis
40 that is placed on patient-reported outcomes (PROs) among patients with psychoses [6]
41 suggesting that a focus on individual's cognitive representations may-be relevant to clinical
42 treatment outcomes among this patient population. This perspective coincides with various
43 social cognitive models (SCMs) such as the health belief model [7] and theory of planned
44 behaviour [8] that assess various cognitive representations or beliefs about health
45 behaviours. While relatively few studies have utilised social cognitive theories among
46 patients with psychoses [see 9,10 for exceptions] they have been applied successfully to
47
48
49
50
51
52
53
54
55
56
57
58
59
60
61
62
63
64
65

1 numerous health behaviours including adherence to medication regimes among patients with
2 urinary tract infections [11], diabetes [12], HIV or AIDS [13] and travellers in malarial
3 regions [14].
4
5

6
7 Among psychiatric populations, the self reported drug attitude inventory [DAI; 15],
8 and the observer rating of medication influence [ROMI; 16] have been predominately
9 utilised to assess patient attitudes towards adherence. Like attitude constructs in the HBM
10 [17] and the TPB [8] these measures assess beliefs about medication adherence including
11 perceived benefits, costs, and relapse prevention. Additionally, the ROMI includes aspects
12 of therapeutic alliance, normative beliefs, and barriers to treatment.
13
14
15
16
17
18
19
20

21 Patient attitudes towards medication adherence may provide a potentially important
22 target for intervention as they are proposed to be potentially modifiable [8]. However,
23 before the relevance of attitudes for adherence among patients with psychoses can be
24 established, research synthesis is needed to examine i) the size of the association between
25 attitudes and medication adherence behaviours and ii) the generalisability of the findings
26 across the relevant studies.
27
28
29
30
31
32
33
34
35

36 In this review we aim to assess the extent to which available evidence supports the
37 development of behaviour change interventions that target patient attitudes by accumulating
38 quantitatively the available evidence on the association between attitudes and medication
39 adherence behaviours among patients with psychoses. Specifically, systematic search and
40 meta-analytic techniques were employed to test the hypotheses that positive patient attitudes
41 towards medication will be positively correlated with adherence behaviours among patients
42 with psychoses. Additionally, study quality will be explored as a moderator of the
43 attitude/adherence association.
44
45
46
47
48
49
50
51
52
53
54
55
56
57
58
59
60
61
62
63
64
65

2. Method

2.1 Searches and inclusion criteria

A three-stage systematic search was undertaken to locate primary research papers relevant to the review. Initial search terms contained adjectives or derivatives of the following 4 terms: “medication” (e.g., neuroleptic or antipsychotic), “compliance” (e.g., adherence), “attitudes” (e.g., subjective response or health beliefs) and “psychosis” (e.g., schizophrenia or schizo or psychosis) that were combined using a series of Boolean and/or operators and wildcards. These combinations were used to search Medline, Psychinfo, and Psych-articles databases between 1980 and 2010. Only English language journals were considered.

Potentially relevant articles were exported into a reference citation manager where titles and abstracts were screened for relevance. At stage 2, studies were included only if a) at least 70% of the sample were diagnosed as having a psychotic disorder (including schizophrenia, schizo-affective disorder, and psychoses), b) an established measure of attitude was included c) attitude was linked bivariately to at least one measure of medication adherence. The effect size r was used as it represents both the direction and strength of associations. Where data was missing, authors were contacted. Papers from which data were extracted are marked with an asterisk in the reference section.

2.2 Data coding

The following data was coded from each primary article where present a) reference details; b) country; c) sample size and patient diagnoses; d) attitude measure(s); e) study design and length of time to outcome; f) adherence measure(s); g) effect size estimate in r ; h) internal reliability of the attitude measure(s); i) internal reliability of the adherence measure(s). Following previous research [18] Pearson and Spearman correlations were

1 analysed independently; the study details of which, are presented in tables 1 and 2,
2 respectively.
3

4 Note that we included the constructs from the HBM as these refer to individuals'
5 cognitive representations or behavioural beliefs such as threat perception and evaluation of
6 the costs and benefits of enacting the behaviour that may underpin more direct attitude
7 assessments [14]. In order to minimise bias resulting from statistically dependent findings
8 [18] global composite scores were coded wherever available and no more than two
9 associations were extracted from a single study. Where there were more data available, the
10 later outcome i.e., that measured most distant to the attitude measure was extracted. When
11 different values other than r were reported, the following effect size types were converted
12 into r : t , F , X^2 .
13
14
15
16
17
18
19
20
21
22
23
24
25
26

27 *2.3 Quality criteria*

28 Due to the problems of multiple testing, a global index of study quality was
29 developed. The following criteria and coding were used to assess for each association the
30 quality of the study reporting it: the sample size ($<30 = 0$, ≥ 30 and $<100 = 1$, $\geq 100 = 2$),
31 study design (cross sectional = 0 and prospective = 1), the conceptual validity of the
32 instrument used to measure attitude (confounded attitude measure = 0, 'pure' attitude
33 assessment = 1), validity of the adherence measure (no established scale = 0, established
34 scale = 1), reliability of adherence measure (self reported, by patient or observer = 0,
35 combination of patient and observer self reports = 1, combination of objective and self
36 reported measures = 2, objective measure = 3), internal reliability of attitude and adherence
37 measures (internal consistency $<.70$ or non reported reliability = 0, internal reliability $>.70$
38 = 1). When adherence was measured objectively rather than self reported internal reliability
39 was assumed to be adequate. Scores were summed across each item to create an overall
40 quality score, ranging from 0 to 9 with higher scores indicating better study quality. Studies
41
42
43
44
45
46
47
48
49
50
51
52
53
54
55
56
57
58
59
60
61
62
63
64
65

1 were then allocated to one of three groups, i.e., low (0–3), medium (4–6) and high quality
2 (7–9), a distinction used in other reviews [19].
3
4

5 2.4 *Inter-rater reliability* 6 7

8 All articles were coded by two independent researchers. An initial agreement rate of
9 89% across all judgments was obtained and all disagreements were resolved through
10 discussion.
11
12
13

14 2.5 *Analytic Strategy* 15 16

17 Hypotheses were examined in three analytic steps. First meta-analytic findings for
18 the overall attitude effects were calculated. Second, publication bias was assessed using
19 Duval and Tweedie’s trim and fill procedure [20]. Third, study quality was explored as a
20 moderator of the attitude/adherence association.
21
22
23
24
25
26

27 Consistent with accumulating evidence, heterogeneity in effect sizes was expected
28 [21]. Thus, observed correlations were pooled and corrected for sampling error using a
29 random effects model. The mean observed (r^+) correlation and corresponding confidence
30 intervals were also calculated. Heterogeneity between scores was assessed using I^2 and Q
31 statistics. The Q statistic reflects the total amount of variance in the meta analysis while the
32 I^2 value indexes the proportion of variance that is due to between-study differences and
33 unlike the Q statistic, it is not sensitive to the number of studies considered. I^2 values range
34 from 0 to 100% and it has been suggested that values of 25%, 50%, and 75% indicate
35 low, moderate and higher heterogeneity, respectively [22].
36
37
38
39
40
41
42
43
44
45
46
47
48

49 Publication of statistically significant results is more probable [23] which increase
50 the likelihood of type 1 errors (and an over estimation of the mean effect size) in meta
51 analysis. To examine this potential bias, we applied Duval & Tweedie’s [20] “trim-and-fill”
52 procedure which estimates the number of studies that may be missing due to publication
53 bias, and then imputes these missing studies prior to re-calculating the attenuated effect size.
54
55
56
57
58
59
60
61
62
63
64
65

1 Plots of effect size against inverse standard errors around the mean effect size estimate were
2 used in this analyses. For the moderation analyses, sub-group analysis was performed by
3
4 grouping the associations by study quality and assessing heterogeneity between groups using
5
6 the $Q_{between}$ statistic within a random effects model.
7
8

9 Comprehensive Meta analysis, version 2.0 (Biostat; Englewood, New Jersey, USA)
10 was used for all analyses
11
12
13

14 15 16 17 **3. Results** 18 19 20

21 At stage one the search strategy yielded a total of 641 papers. After scanning
22
23 abstracts and titles using the specified inclusion criteria 111 papers were identified as
24
25 relevant and read in detail. The substantial exclusions at this stage were due to a large
26
27 number of studies that had not assessed both attitudes towards medication and adherence
28
29 behaviours. 14 papers [9, 10, 24-35] of the 111 potentially relevant papers were found to
30
31 meet all inclusion criteria and included in the review. The search process is summarized in
32
33
34
35
36 Figure 1.
37

38 The reported studies were conducted in Hong Kong, Spain, Denmark, the
39
40 Netherlands, the United Kingdom, and the United States. The percentage of patients with
41
42 psychosis varied between 71% and 100%.
43
44
45
46
47
48

49 *3.1 Data Description* 50

51 A total of 19 independent correlations were analyzed. Of these 13 (N =1911) were
52
53 Pearson correlations (r) while 6 were Spearman Rank-order coefficients (rs) (N = 780). Of
54
55 the Pearson correlations, 8 were coded as poor in quality (N=1034) and 5 as moderate in
56
57 quality (N=877). There were no associations coded as good in quality. Of the Spearman
58
59
60
61
62
63
64
65

1 correlations, 3 associations were coded as poor in quality (N =519), 2 as moderate in quality
2 (N =203) and 1 as good in quality (N =58).
3

4 Figures 2 and 3 present the meta-analytic results for the Pearson and Spearman
5 correlations, respectively and include the study details, sample size (N), each study r , the
6 mean weighted (r^+) and 95% confidence intervals (CIs),
7
8
9
10

11 *3.2 Overall Attitude effect for Pearson's correlations*

12 The averaged corrected correlation between attitude and medication was $r^+ = 0.25$,
13 (CIs = 0.18, to 0.32), $Q(12) 29.95, p <.05$. This represents a small-to-medium effect size
14 and as the confidence intervals did not include zero, the null hypothesis was rejected. All of
15 the effects were positive in valence. The Q statistic, and an I^2 statistic of 51.90% showed a
16 moderate degree of heterogeneity in the effect size across the studies, which indicated the
17 likelihood of moderators [36].
18
19
20
21
22
23
24
25
26
27
28
29
30
31

32 *3.3 Overall Attitude effect for Spearman's correlations*

33 The averaged corrected correlation between attitude and medication was $r^+ = 0.26$,
34 (CIs =0.12, to 0.38], $Q(5) 15.35, p = .01$. This represents a small-to-medium effect size
35 (Cohen, 1987) and as the confidence intervals did not include zero, the null hypothesis was
36 rejected. All of the effects were positive in valence. The Q statistic, and an I^2 statistic of
37 67.43.% showed a substantial degree of heterogeneity in the effect size across the studies,
38 which indicated the likelihood of moderators [36].
39
40
41
42
43
44
45
46
47
48
49
50
51

52 *3.4 Publication Bias*

53
54
55
56
57
58
59
60
61
62
63
64
65

1 For the overall analyses we found no evidence of publication bias. A single missing
2 effect was identified for the Spearman correlations. However, adjusting for the missing
3 study, did not significantly alter the mean effect size ($r^+ = .23$, CIs = 0.09, to 0.36)
4
5
6
7
8

9 *3.5 Moderator analysis*

10 For the Pearson correlations, sub-group analysis indicated that the between study
11 heterogeneity was not due to study quality, $Q_{\text{between}} = 1.11$ (1), $p = .26$ (for studies coded as
12 medium $r^+ = .29$, CIs = .19 to .38; for studies coded as poor, $r^+ = .22$, CIs = .13 to .30) There
13 were not enough studies using Spearman correlations to explore study quality as a
14
15
16
17
18
19
20
21
22
23
24
25
26
27
28
29
30
31
32
33
34
35
36
37
38
39
40
41
42
43
44
45
46
47
48
49
50
51
52
53
54
55
56
57
58
59
60
61
62
63
64
65

4. Discussion

We systematically reviewed and meta analysed the empirical evidence on attitudes
towards medication adherence and medication adherence behaviours among patients with
psychoses. A positive relationship of a small to moderate magnitude was observed. Study
quality as a moderator did not account for the significant heterogeneity between studies.
The review has various limitations. Because of the small number of studies we were unable
to conduct univariate moderator analysis which may have explained some of the
heterogeneity between studies. Nonetheless, a global index of study quality did not
moderate the attitude/adherence combination across the relevant studies suggesting that
theoretical moderators may-be operating. For example, side-effect profiles may moderate
the attitude/adherence association with more noxious medications reducing adherence. It is
also important to consider stage of illness (recent onset versus chronic), patient's psychotic

1 state (active versus remission) in addition to a number of individual characteristics such as
2 length of illness, substance abuse, gender, ethnicity, and social economic status.
3

4 The remaining limitations reflect the methodological shortcomings of the included
5 studies, only one of which met the defined criteria for a high quality study. Crucially, some
6 of the measures designed to assess patient attitudes are poorly conceptualised making it
7 difficult to establish the 'pure' association between attitudes and adherence behaviour. For
8 example, the ROMI designed to assess patient attitudes, includes aspects of therapeutic
9 alliance and self efficacy which although relevant, may be distinctive concepts to patient
10 attitudes. Relatedly, internal reliability coefficients were reported in 4 studies for attitudes
11 and a single study for adherence. Additionally, only one study included an objective
12 measure of adherence, with the majority relying on self reports from either the patient or
13 persons providing care.
14
15
16
17
18
19
20
21
22
23
24
25
26
27

28 The finding that attitudes are small to moderately positively related to adherence
29 behaviour among patients with psychoses is consistent with the findings in other domains
30 and populations, both in direction and size [14] indicating that the patient decision making
31 process is relevant to clinical outcomes among patients with severe mental illness. Thus,
32 despite the specific illness characteristics typically associated with psychoses (e.g., lack of
33 insight) the relationship between attitudes and medication adherence is comparable to other
34 populations without any mental illness. This finding substantiates recent qualitative reviews
35 [5] and adds to these by providing mean effect size estimates and indexes of heterogeneity.
36
37
38
39
40
41
42
43
44
45
46
47
48
49
50
51
52
53
54
55
56
57
58
59
60
61
62
63
64
65

Importantly, this result is consistent with the growing body of evidence indicating that
subjective patient reports are predictive of important clinical outcomes among patients with
psychoses [6]. Moreover, in contrast to correlates traditionally associated with adherence
behaviours among patients with psychoses, (i.e., demographic and clinical characteristics)
attitudes are potentially modifiable and therefore provide a promising target for intervention.

1 The finding that patient attitudes towards medication adherence are positively related
2 to behavioural adherence is consistent with SCMs such as the TPB. The TPB proposes that
3 attitudes predict behavioural intentions which reflect an individual's motivation to engage in
4 the behaviour. Following this, patient motivation is the presumed mechanism that accounts
5 for adherence behaviours among patients with psychoses. Nonetheless, the TPB also
6 acknowledges that positive intentions to engage in a behaviour is not always enough and self
7 regulatory factors influence the capacity to translate intentions into action. Thus, self
8 regulatory skills such as setting specific plans to implement goals may be needed
9

10
11
12
13
14
15
16
17
18
19 Theoretical models are rarely tested in research on medication adherence among
20 psychiatric populations. This is limiting as theoretical models like the TPB not only specify
21 the causal mechanism of behaviour change but facilitate the conceptualisation of distinct but
22 closely related constructs [37]. For example, the TPB identifies normative beliefs, and
23 perceptions of control as distinct antecedents of behavioural intention. The current findings
24 indicate that SCMs such as the TPB may be relevant to patients with psychoses although the
25 measures may need to be adapted. Models such as the TPB are often an attractive for
26 researchers as additional constructs can be added when they explain variation over and
27 above those already specified in the model. Thus other constructs (e.g., therapeutic alliance)
28 if found to be relevant could be included.
29
30
31
32
33
34
35
36
37
38
39
40
41
42

43 This review indicates that interventions targeting patient attitudes could be
44 developed. An example is the leaflet-like intervention [38] that included persuasive
45 communication targeting the formation of positive attitudes by highlighting the advantages
46 of drinking within daily limits (e.g., fewer headaches and hangovers and lower risk of liver
47 disease). Similar interventions could be developed and evaluated in the context of
48 medication adherence and could have direct implications for healthcare policy and clinical
49 practice. The development of interventions is important, because, unlike correlation studies,
50
51
52
53
54
55
56
57
58
59
60
61
62
63
64
65

1 where only associations are tested, causal statements about the direction of the association
2 can be made in addition to assessments of clinical relevance. A recently developed
3 taxonomy of behaviour change techniques [37] could facilitate the selection of appropriate
4 technique(s) for targeting attitude change and subsequent medication adherence.
5
6
7
8

9 This review underlines the need for methodologically more rigorous research and
10 points to at least three requirements for future research in the area. First, attitude and
11 adherence should be assessed with accurate instruments that have been shown to be valid
12 measures among patients with psychosis. Second, research should consider the role of
13 attitudes after consideration of other relevant constructs (e.g., therapeutic relationship), in
14 addition to potential mediating and moderating factors using a theoretical framework such as
15 the TPB. Third, interventions designed to target and improve patient attitudes towards
16 medication adherence should be developed and evaluated.
17
18
19
20
21
22
23
24
25
26
27
28

29 Medication adherence is a complex issue particularly among patients with psychoses.
30 The evidence reviewed here identifies patient attitudes as central to adherence. Specifically,
31 among patients with psychoses, subjective evaluations of medication adherence were shown
32 to be positively related to adherence behaviours. Rational decision making models such as
33 the TPB could therefore be tested empirically among patients with psychoses.
34
35
36
37
38
39
40
41
42
43

44 **References**

- 45
46
47 [1] Young JL, Zonana HV, Shepler L (1986) Medication non-compliance in schizophrenia:
48 codification and update. *Bull Am Acad Psychiatr Law.* 14, 105–122
49
50
51 [2] Kamali M, Kelly BD, Clarke M, Browne M, Gervin S, Kinsella A, Lane A, Larkin C,
52 O'Callaghan E (2006) A prospective evaluation of adherence to medication in first episode
53 schizophrenia *Eur Psychiatry.* 21 (1) 29-33
54
55
56 [3] Pinikahana J (2005) Determinants of medication compliance in schizophrenia in Pletson, J.
57 E.(Ed.). *Progress in Schizophrenia research.* Nova Science Publishers, Inc. Hauppauge, NY,
58 pp. 131-148.
59
60
61
62
63
64
65

- 1 [4] Thieda P, Beard S, Ritchter A, Kane, J (2003) An economic review of adherence with
2 medication therapy in the treatment of schizophrenia. *Psychiatr Serv*; 54, 508-
3 516.
- 4 [5] Lacro JP, Dunn LB, Dolder CR et al. (2002) Prevalence of and risk factors for medication
5 nonadherence in patients with schizophrenia: a comprehensive review of recent literature. *J*
6 *Clin Psychiatry*. 63, 892-908.
- 7
8
9
10 [6] Reininghaus U, McCabe R, Burns T, Croudace T, Priebe S (2010) Measuring patients'
11 views: a bi-factor model of distinct patient-reported outcomes in psychosis. *Psychol Med*,
12 21:1-13
- 13
14
15 [7] Becker MH, Haefner DP, Maiman LA (1977) The health belief model of prediction of dietary
16 compliance: a field experiment. *J Health Soc Behav*. 18, 348-366.
- 17
18
19
20 [8] Ajzen I (1991) The theory of planned behaviour. *Organ Behav Hum Decis Process*. 50, 179-
21 211.
- 22
23
24 [9]*Dolder CR, Lacro JP, Warren KA, Golshan S, Perkins D, Jeste DV (2004)
25 Brief evaluation of medication influences and beliefs. Development and testing of a brief scale for
26 Medication Adherence. *J Clin Psychopharmacol*. 24 (4) 404-409
- 27
28
29
30 [10]*Kopelowicz A, Wallace CJ, Liberman RP, Aguirre F, Zarate R, Mintz J (2007) The use of the
31 theory of planned behaviour to predict medication adherence in schizophrenia. *Clin*
32 *Schizophr Relat Psychoses*. 1 (3) 227-242.
- 33
34
35
36 [11] Reid LD, Christensen DB (1988) A psychosocial perspective in the explanation of patients'
37 drug taking behaviour. *Soc Sci Med*. 27, 277-285.
- 38
39
40
41 [12] Brwonlee-Duffeck M, Peterson L, Simonds JF, Goldstein D, Kilo, C, Hoette S (1987) The role
42 for health beliefs in the regimen adherence and metabolic control of adolescents and adults
43 with diabetes mellitus. *Soc Sci Med*. 55, 139-144.
- 44
45
46
47 [13] Murphy DA, Greenwell L, Hoffman D (2002) Factors associated with antiretroviral
48 adherence among HIV-infected women with children. *Women Health*. 36, 97-111.
- 49
50
51
52
53 [14] Abraham C, Clift S, Grabowsk, P (1999) Cognitive predictors of adherence to malaria
54 prophylaxis regimens on return from a malarious region: a prospective study. *Soc Sci Med*
55 48. 1641-1654.
- 56
57
58
59
60
61
62
63
64
65

- 1 [15] Hogan TP, Awad A G Eastwood, R (1983) A self-report scale predictive of drug compliance in
2 schizophrenics : reliability and discriminative validity. *Psychol Med.* 13, 177–183.
3
- 4 [16] Weiden P, Rapkin B, Mott T (1994) Rating of medication influences (ROMI) scale in
5 schizophrenia. *Schizophr Bull.* 20, 197-310.
6
7
8
9
- 10 [17] Becker MH, Haefner DP, Kasl SV et al. (1977) Selected psychosocial models
11 and correlates of individual health-related behaviours. *Med Care.* 15 (supplement),
12 27–46.
13
- 14 [18] Hunter JE, Schmidt FL (2004) *Methods of meta-analysis: correcting error and bias in research*
15 *findings (2nd ed.). Newbury Park, CA: Sage Publications; 2004*
16
17
18
19
20
21
- 22 [19] Katsakou C, Priebe S (2007) Patient’s experiences of involuntary hospital admission and
23 treatment: A review of qualitative studies. *Epidemiol Psichiatr Soc.* 16, 172-8.
24
25
- 26 [20] Duval S, & Tweedie R (2000) A nonparametric “trim and fill” method
27 of accounting for publication bias in meta-analysis. *J Am Stat Assoc.* 95, 89–98.
28
29
- 30 [21] National Research Council (1992) *Combining information: Statistical issues and opportunities*
31 *for research. Washington, D.C.: National Academy Press.*
32
33
34
35
- 36 [22] Higgins JP, Thompson SG, Deeks JJ, Altman DG, (2003). *Measuring inconsistency in meta-*
37 *analyses. BMJ.* 327, 557–560
38
39
40
- 41 [23] Greenwald AG, (1975) Consequences of prejudice against the null hypothesis. *Psychol Bull.*
42 82, 1–20.
43
44
- 45 [24]*Agarwal MR, Sharma VK, Kishore Kumar KV, Lowe D (1998) Non-compliance with
46 treatment in patients suffering from schizophrenia: a study to evaluate possible
47 contributing factors. *Int. J. Soc. Psychiatry.* 44, 92-106, 1998.
48
- 49 [25]*Cabeza IG, Amador MS, Lopez CA, de Chavez MG (2000) Subjective response to
50 antipsychotics in schizophrenic patients: clinical implications and related factors. *Schizophr*
51 *Res.* 41(2):349-55.
52
53
54
- 55 [26]*Donohoe G, Ownes N, O’Donell C, Burke T, Morre L, Tobin A, O’Callaghan EO (2001)
56 *Predictors of compliance with neuroleptic medication among inpatients with schizophrenia: a*
57 *discriminant function analysis. Eur. Psychiatry.* 2001. 16, 293-8
58
59
60
61
62
63
64
65

- 1 [27]* Fialko L, Garety PA, Kuipers E, Dunn G, Bebbington PE, Fowler D, Freeman D (2008) A
2 large-scale validation study of the medication adherence rating scale (MARS). *Schizophr*
3 *Res.* 100, 53-59.
4
5
6 [28] *Haan DL, Amelsvoort VT, Dingsmans P, Linszen , (2007) Risk factors for medication non-
7 adherence in patients with first episode schizophrenia and related disorders; A prospective
8 five year follow –up. *Pharmacopsychiatry*, 40 1-5
9
10
11
12 [29] *Hayward P, Chan N, Kemp R et al. (1995) Medication selfmanagement: a preliminary report
13 of an intervention to improve medication compliance. *J Ment Health.* 4, 511–517.
14
15
16 [30] *Kelly GR, Mamon J A, and Scott, JE (1987) Utility of the Health Belief Model in
17 examining medication compliance among psychiatric outpatients. *Soc Sci Med.* 25, 1205-
18 1211.
19
20
21 [31] *Kennedy, FC, Seth R, Sinclair S, Levey S, Bentall, RP (2003) Patients’ appraisals of
22 neuroleptic medication: the measurement and predictive utility of attitudes. *Prim Care*
23 *Community.* 9 (1) 21-27.
24
25
26
27 [32] *Mutsatsa SH, Joyce EM, Hutton SB et al. (2003) Clinical correlates of early medication
28 adherence: West London first episode schizophrenia study. *Acta Psychiatrica Scandinavica*
29 108, 439-446
30
31
32
33 [33] *Quach PL, Mors O, Christensen TO, Krarup G, Jorgensen P, Bertelsen M, Jeppesen P,
34 Petersen L, Thorup A, Nordentoft M,(2009) Predictors of poor adherence to medication
35 among patients with first-episode schizophrenia spectrum-disorder. *Early Interv Psychiatry.*
36 (3) 66, 66-74.
37
38
39 [34] *Tsang HWH, Fung K MT, Corrigan PW, (2009) Psychosocial and socio-demographic
40 correlates of medication compliance among people with schizophrenia. *J Behav Ther Exp*
41 *Psychiatry.* 40, 3-14.
42
43
44 *[35] Kamali M, Kelly L, Gervin M, Browne S, Larkin C, O’Callaghan E (2000) The Prevalence of
45 Comorbid Substance Misuse and Its Influence on Suicidal Ideation Among In-Patients with
46 Schizophrenia. *Acta Psychiatr Scand.* 101 (6) 452-6.
47
48
49 [36] Higgins JPT, Thompson SG (2002) Quantifying heterogeneity in a meta analysis.
50 *Stat Med.* 2002. 21, 1539-58
51
52
53
54 [37] Abraham C, Michie S (2008) A taxonomy of behavior change techniques used in interventions.
55 *Br J Health Psychol.* 27(3):379-387.
56
57 [38] Murgraff V, McDermott MR, Abraham C (2007) Reducing Friday alcohol consumption among
58 moderate, women drinkers: evaluation of a brief evidence-based intervention. *Alcohol &*
59 *Alcoholism: Am J Drug Alcohol Abuse.* 42(1), 37–41.
60
61
62
63
64
65

1
2
3
4
5
6
7
8
9
10
11
12
13
14
15
16
17
18
19
20
21
22
23
24
25
26
27
28
29
30
31
32
33
34
35
36
37
38
39
40
41
42
43
44
45
46
47
48
49
50
51
52
53
54
55
56
57
58
59
60
61
62
63
64
65

Table 1.
Study Details for the Pearson Correlations

Author(s) and year	Country	Sample size and % with psychosis	Attitude Measure(s)	Study design (CR= cross sectional, PRO=prospective) and length of time to outcome	Adherence measure(s)	Effect size estimate r and N	Reliability of attitude measure(s)	Reliability of adherence measure(s)
Agarwal et al., 1998	UK	78 (100%)	DAI	CR	Combination of patient and observer rated compliance based on Lin et al., 1979.	r = .23, n=76	Not reported	Not reported
Donohoe et al., 2001	UK	32 (100%)	DAI	CR	Observer rated using a structured clinical interview (Adams and Howe, 1993).	r=.62, n=32	Not reported	Not reported
Haan et al., 2007	Netherlands	119 (100%)	ROMI , global scale	PRO 5 years	Observer rated compliance, developed by authors.	r=.13, n=97	Not reported	Not reported
Kamali et al., 2001	UK	87 (100%)	DAI	CR	Observer rated using a structured clinical interview (Adam and Howe, 1993)	r=18, n=66	Not reported	Not reported
Kapelowics et al., 2007.	America (Mexican-American population)	155 (100%)	TPB, Attitude construct	CR	Treatment compliance interview (TCI; Weiden et al., 1995) (Patient, relative and treatment provider versions used).	r =.37, n=155	$\alpha=.91$	Not reported
Kelly et al., 1987	USA	107 (72%)	HBM, Barriers construct	CR	Self reported compliance (9 items) developed by authors.	r=.32 ^r , n=107	$\alpha=.98$	$\alpha=.90$
			HBM, Benefits construct			r=.20, n=107		
Mutsatsa et al., 2003	UK	101 (100%)	ROMI, compliance items.	PRO Maximum 3 weeks.	Observer rated compliance, using the compliance rating scale (CRS; Hayward et al., 1995)	r =.04, n=101	Not reported	Not reported
			ROMI, non-compliance items			r =.29 ^r , n=101		
Tsang et al., 2009.	Hong Kong	86 (100%)	ROMI, compliance items.	CR	Observer rated compliance using the Kemp Compliance scale (KCS; Kemp et al., 1996).	r=.30, n=86	Not reported	Single item
			ROMI, non-compliance items.			r =.33 ^r , n=86		
Quach et al. 2009.	Denmark	432 (100%)	ROMI, compliance items.	PRO 2 years	Observer rated, based on structured interview with clients, information from primary care-givers as well as examination of patient's medical records.	r=.29 ^c , n=432	Not reported	Not reported
			ROMI, non-compliance items.			r=.13 ^c , n=432		

Note: DAI=drugs attitude inventory, TPB=theory of planned behaviour, HMB=health belief model, ROMI=rating of medication influence, ^r = reversed scored, ^c= converted into r.

Table 2.
Study Details for the Spearman Correlations

Author(s) and year	Country	Sample size and % with psychosis	Attitude Measure(s)	Study design (CR= cross sectional, PRO=prospective) and length of time to outcome	Adherence measure(s)	Effect size estimate r and N	Reliability of attitude measure(s)	Reliability of adherence measure(s)
Cabeza et al., 2000.	Spain	60 (100%)	DAI	CR	Observer rated based on deviation from prescribed medication taking and unjustified missed appointments.	r=.46, n=60	Not reported	Not reported
Dolder et al., 2004.	USA	58 (100%)	DAI	CR	Refill compliance	r=.07, n=58	Not reported	Not reported
Failko et al., 2008.	UK	277 (100%)	MARS, Attitude subscale	CR	Observer rated compliance using the compliance item of the Engagement Measure (Hall et al., 2001)	r=.10, n=277	α =.44	Single item
Hayward et al., 1995.	UK	21 (71%)	AMQ	PRO (variable, one–two months after discharge).	Observer rated by doctors responsible for the patients care.	r=.58, n=21	Not reported	Not reported
Kennedy et al., 2003.	UK	182 (100%)	TPB, Attitude construct	CR	The Kemp adherence scale, (KCS; Kemp et al., 1996) Observer rated (key worker)	r=.20, n=182	α =.7	Single item
					Drug behaviour scale (DBS; Kennedy et al., 2003). self reported.	r=.32r, n=182	α =.7	Not reported

DAI=drugs attitude inventory, TPB=theory of planned behaviour, , AMQ= attitudes to medication questionnaire, DBS=Drug behaviour scale, MARS=medication attitude rating scale, ^r= reversed scored, ^c= converted into r.

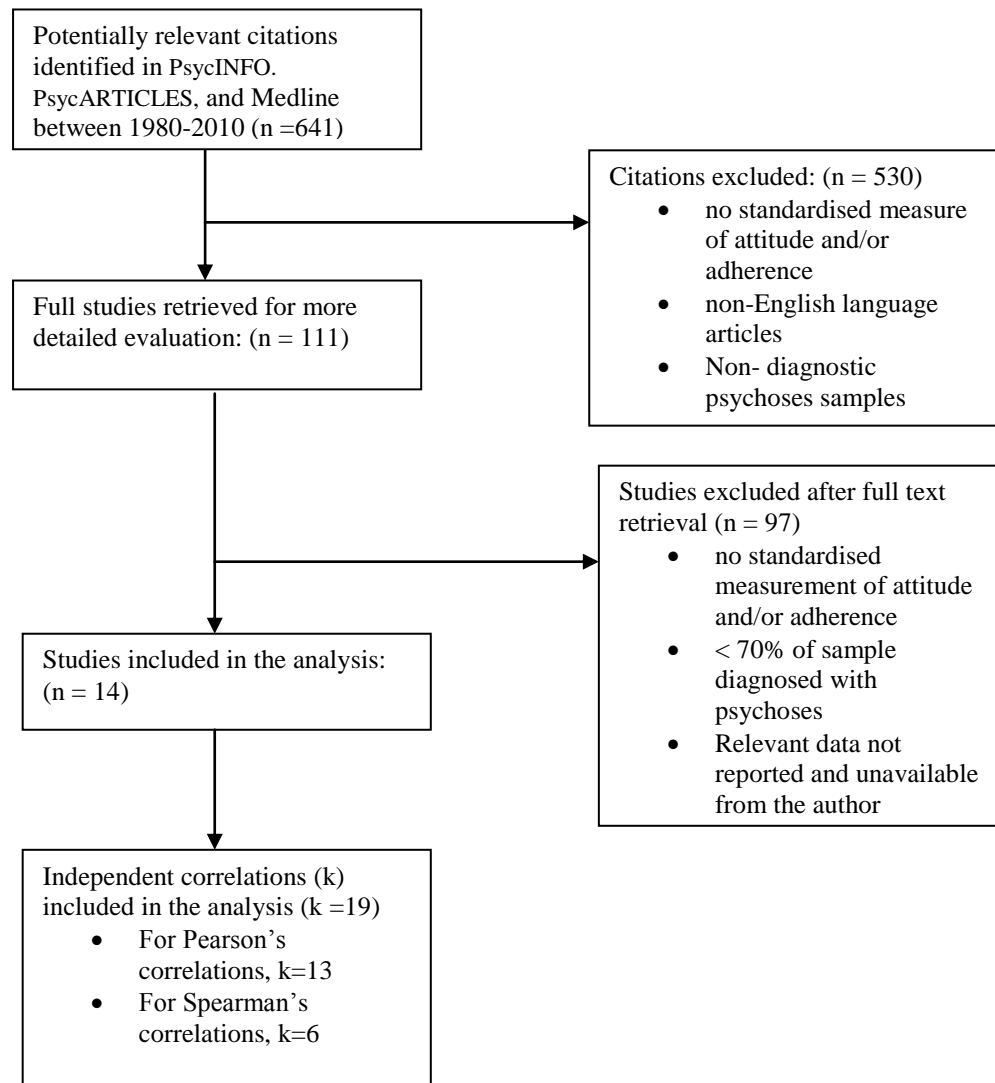
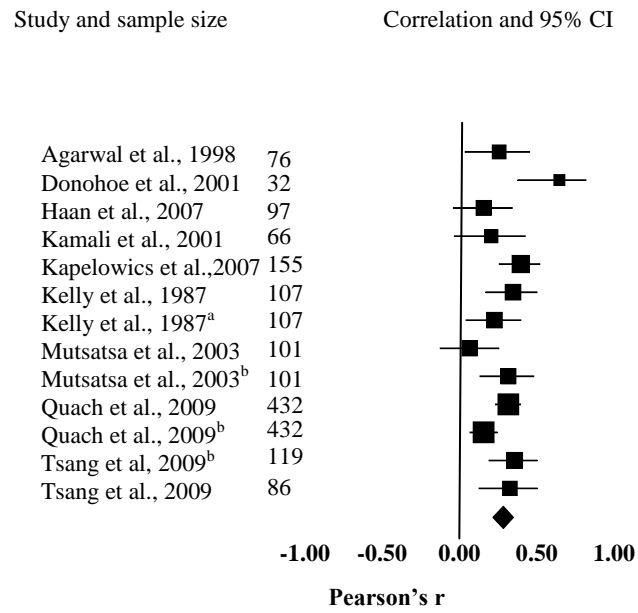
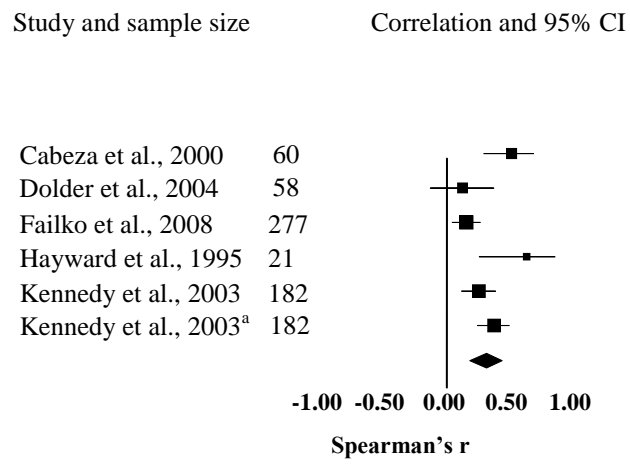


Figure 1. Search process of the literature



Note : ^a = benefits; ^b = non-compliance items,

Fig. 2 Forest plot of the Pearson correlations (with 95% confidence intervals) between attitude and medication adherence.



Note.^a = drug behaviour scale items

Fig.3. Forest plot of Spearman correlations (with 95% confidence intervals) between attitude and medication adherence