



City Research Online

City, University of London Institutional Repository

Citation: Parmar, D., Allegri, M. D., Souares, A., Savadogo, G. & Sauerborn, R. (2011). Equity impact of community-based health insurance (2004-2008). Paper presented at the 3rd International Conference on Health Financing in Developing and Emerging Countries (CERDI), 11-05-2011 - 13-05-2011, Université d'Auvergne, France.

This is the accepted version of the paper.

This version of the publication may differ from the final published version.

Permanent repository link: <https://openaccess.city.ac.uk/id/eprint/4134/>

Link to published version:

Copyright: City Research Online aims to make research outputs of City, University of London available to a wider audience. Copyright and Moral Rights remain with the author(s) and/or copyright holders. URLs from City Research Online may be freely distributed and linked to.

Reuse: Copies of full items can be used for personal research or study, educational, or not-for-profit purposes without prior permission or charge. Provided that the authors, title and full bibliographic details are credited, a hyperlink and/or URL is given for the original metadata page and the content is not changed in any way.



Institute of Public Health
Heidelberg, Germany



Centre de Recherche en Santé de Nouna
Burkina Faso

Equity impact of community-based health insurance *(2004-2008)*

Divya Parmar, Manuela de Allegri, Aurélia Souares,
Germain Savadogo, Rainer Sauerborn

Equity in health financing

- Equity is an ethical principle
- Health care should be:
 1. financed according to *ability-to-pay*
 - **Horizontal Equity:** those who have the same ability-to-pay should pay the same
 - **Vertical Equity:** those with greater ability-to-pay should pay more
 2. accessed according to *need*

Reference: Culyer (1995)

The study

Data source: Household panel survey 2004-2008 (n=4695 individuals)

Equity focus:

- SES (poor vs. non-poor):

Asset-based SES index was created by Principal Components Analysis (PCA). Data on ownership of household assets (durable goods and livestock) and housing conditions were used. Quartile 1 (Q1) was considered as 'poor'.

- Gender (women vs. men)
- Age (children vs. adults)

Equity at 2 levels:

1. Equity in enrolment: Are the vulnerable groups enrolling into CBHI?
2. Equity in utilization: Are the vulnerable groups utilizing healthcare?

CBHI design & equity

- **Poor:** Premium subsidies for poor (Q1) households in every village, since 2007
- **Women:** No specific benefits.
 - Deliveries not covered by CBHI
 - Government: ANC free and since 2007, 80% subsidy on deliveries at public facilities
- **Children:** Premium subsidies, since the beginning (2004)
 - Government: Essential immunizations, malaria treatment & consultations

Equity in enrolment

Variable	OR	SE
Male	0.886	0.187
Child	0.456	0.132***
Poor	0.274	0.090***
Near	0.985	0.197
Household Size	1.027	0.011**
Ethnicity_Bwaba	0.961	0.235
Literate	1.974	0.403***
Year2005	1.792	0.436**
Year2006	0.890	0.216
Year2007	2.775	0.644***
Year2008	1.524	0.366*

- No gender effect
- Children less likely to enroll
- Poor less likely to enroll

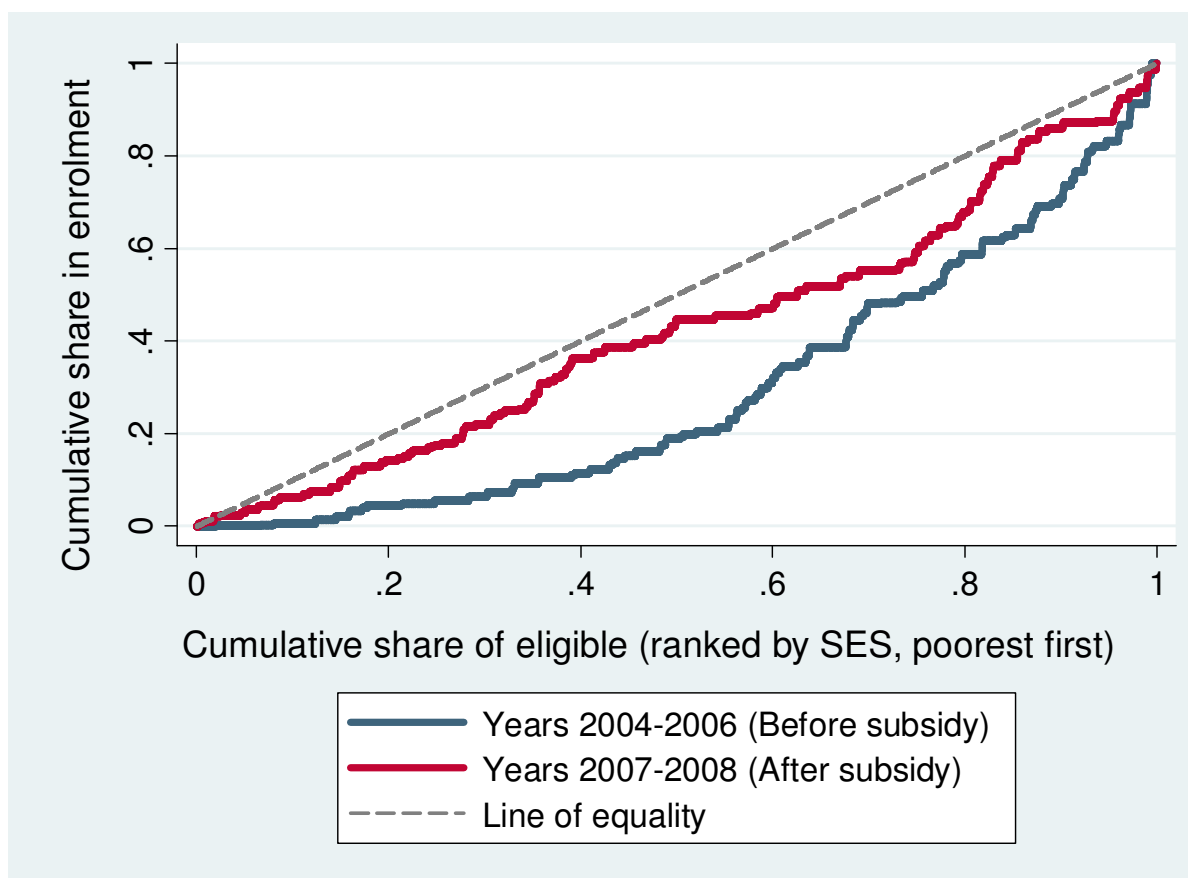
Dependent variable: CHI (0,1)

*** p<0.01, ** p<0.05, * p<0.1

Only those individuals who were offered CBHI were included (n=4695)

Equity in enrolment: *impact of subsidies*

Concentration curves: Before & after subsidy



Equity improved
Poor enrolling more after subsidy

Equity in utilization

Variable	OR	SE
Male	0.876	0.130
Child	0.565	0.175*
Poor	0.499	0.115***
CHI	2.182	0.531***
Near	1.454	0.212**
Household Size	1.016	0.009*
Ethnicity_Bwaba	1.155	0.183
Literate	1.545	0.230***
Year2005	1.904	0.231
Year2006	0.723	0.181
Year2007	0.826	0.212
Year2008	0.733	0.185

- No gender effect
- Children less likely to utilize
- Poor less likely to utilize

Dependent variable: Facility care (0,1)
 *** p<0.01, ** p<0.05, * p<0.1

Only those individuals who reported being sick in the previous month at the time of the survey were included (n=1710)

Equity in utilization

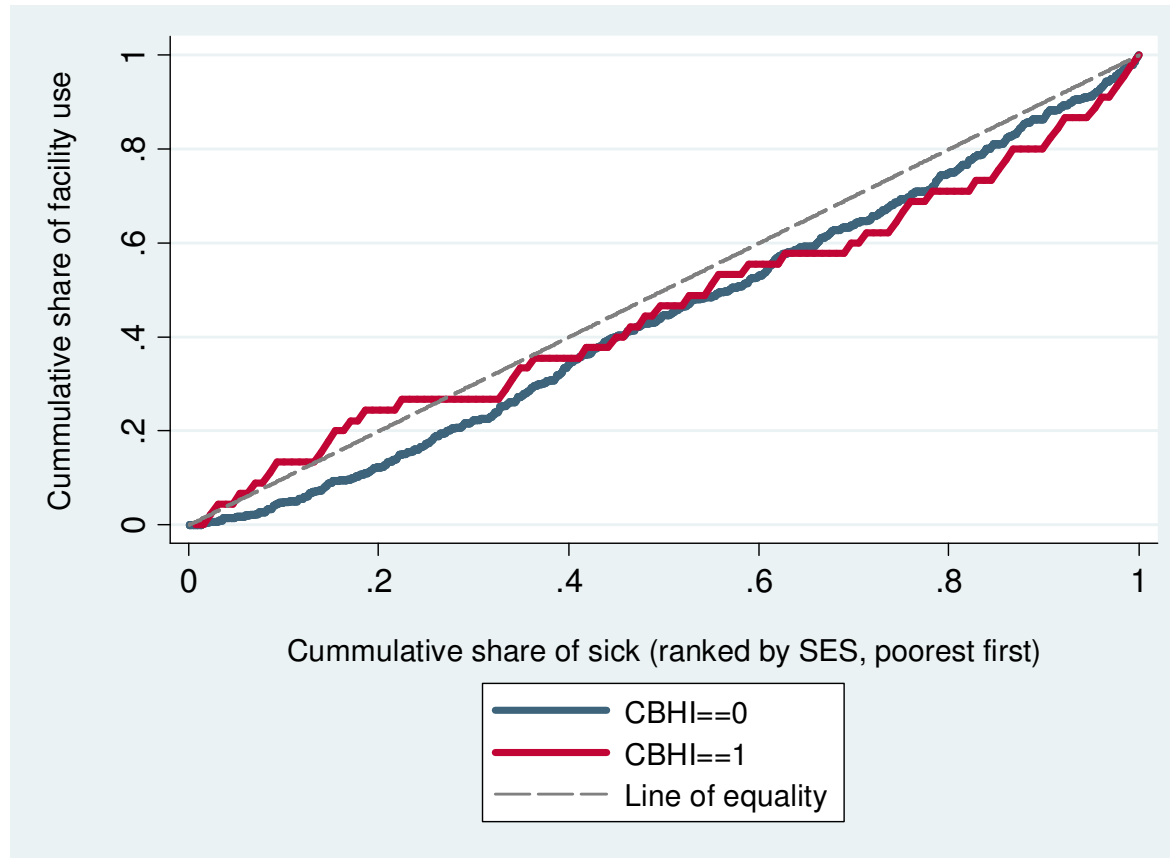
Variable	OR	SE
Male	0.876	0.130
Child	0.565	0.175*
Poor	0.499	0.115***
CHI	2.182	0.531***
Near	1.454	0.212**
Household Size	1.016	0.009*
Ethnicity_Bwaba	1.155	0.183
Literate	1.545	0.230***
Year2005	1.904	0.231
Year2006	0.723	0.181
Year2007	0.826	0.212
Year2008	0.733	0.185

- No gender effect
- Children less likely to utilize
- Poor less likely to utilize

But, are enrolled poor women and children utilizing care more than the non-enrolled?

Equity in utilization: *SES*

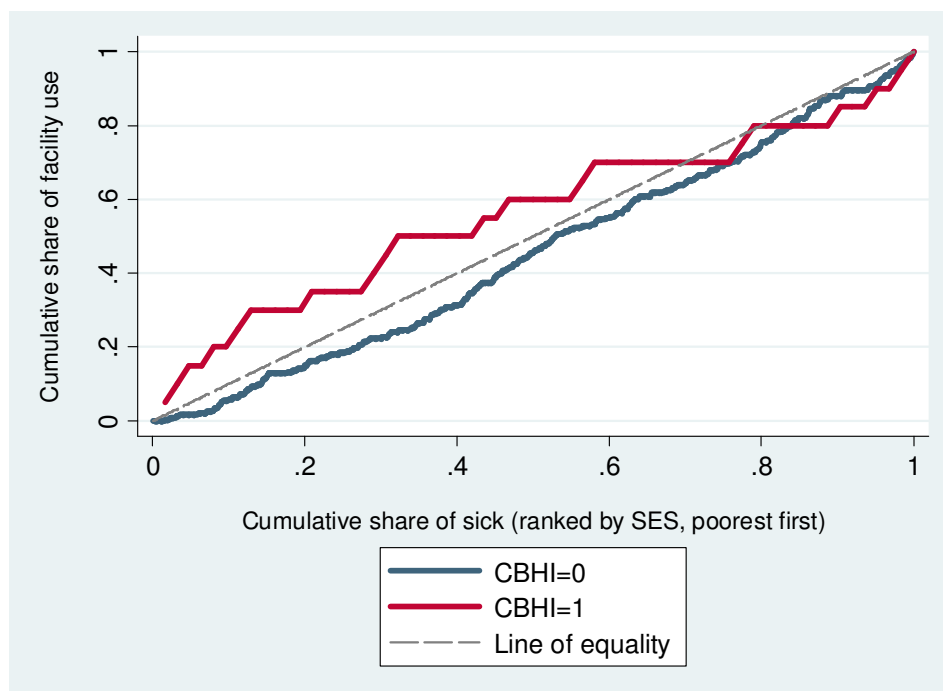
Utilization by enrolment status



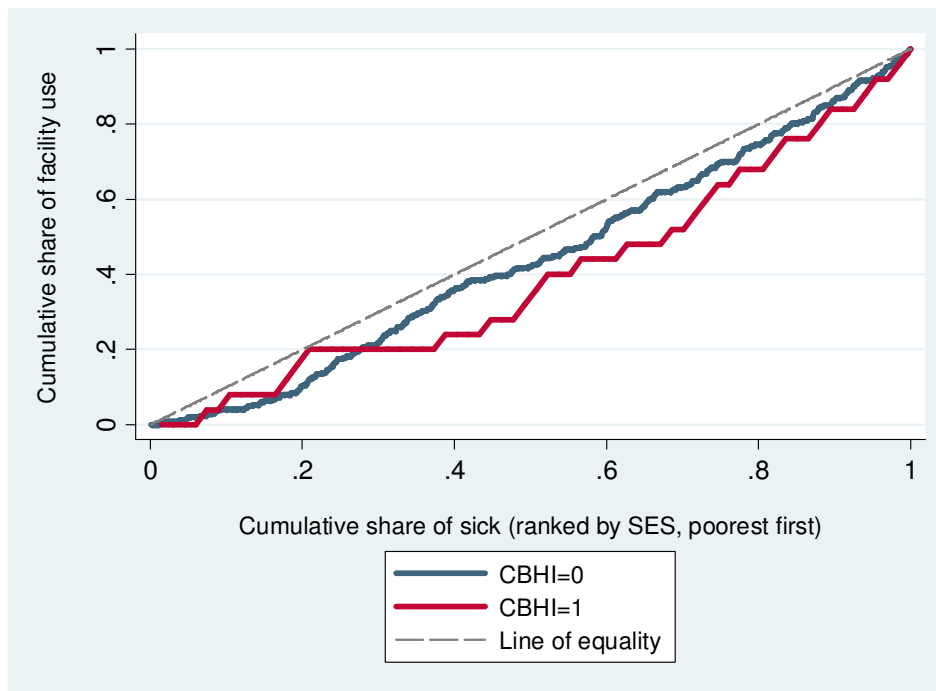
Utilization slightly more among poor who enrolled
(CC above line of equality for poorest)

Equity in utilization: *gender*

Women, by enrolment status



Men, by enrolment status

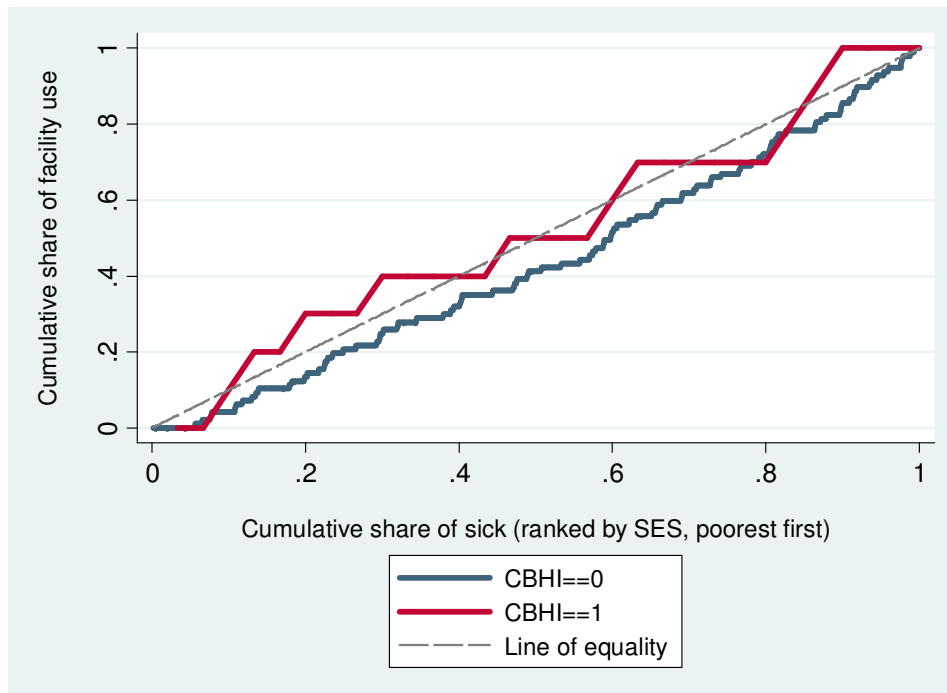


**Among women: utilization more among poor women who enrolled
(CC above line of equality)**

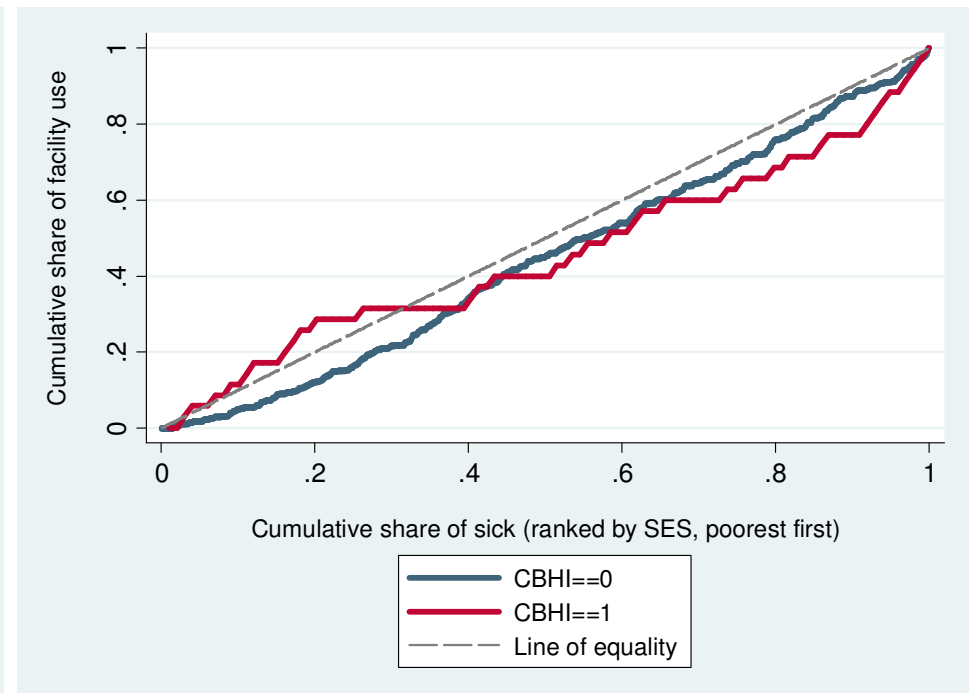
**Among men: no difference in utilization for poor
(For non-poor, utilization slightly less for enrolled)**

Equity in utilization: *age*

Children, by enrolment status



Adults, by enrolment status



Among children: utilization more among poor children who enrolled
(CC above line of equality)

Among adults: utilization more among poor adults who enrolled
(CC above line of equality for poor)

Results

1. Equity in enrolment

- Poor: enrolment increased after subsidy (still pro-rich)
- Children less likely to enroll
- No gender effect

2. Equity in utilization

- Poor: slight increase in utilization for those that enrolled
- Women: pro-poor effect for those that enrolled
- Children: pro-poor effect for those that enrolled

Note: Shows the status with and without CBHI; but does not mean that CBHI caused changes in utilization

Implications for National Health Insurance

- **Poor: Premium subsidy essential but not enough**
 - Less likely to enroll. Even after enrolling less likely to utilize care
 - Other costs, health awareness, behavior at health facilities, sensitization....
- **Children: Premium subsidy essential but not enough**
 - Less likely to enroll. However, once enrolled utilize care
 - Continue free/subsidized services for children at health facilities
 - Sensitization to increase enrolment
- **Women: Premium subsidies not essential**
 - Continue free/subsidized maternal care at health facilities

Thank you

Divya Parmar
Parmar@uni-heidelberg.de
Institute of Public Health
Heidelberg University
Germany

