



## City Research Online

### City, University of London Institutional Repository

---

**Citation:** Hibar, D.P., Westlye, L.T., van Erp, T.G., Rasmussen, J., Leonardo, C.D., Faskowitz, J., Haukvik, U.K., Hartberg, C.B., Doan, N.T., Agartz, I., et al (2016). Subcortical volumetric abnormalities in bipolar disorder.. *Molecular Psychiatry*, 21(12), pp. 1710-1716. doi: 10.1038/mp.2015.227

This is the published version of the paper.

This version of the publication may differ from the final published version.

---

**Permanent repository link:** <https://openaccess.city.ac.uk/id/eprint/15077/>

**Link to published version:** <https://doi.org/10.1038/mp.2015.227>

**Copyright:** City Research Online aims to make research outputs of City, University of London available to a wider audience. Copyright and Moral Rights remain with the author(s) and/or copyright holders. URLs from City Research Online may be freely distributed and linked to.

**Reuse:** Copies of full items can be used for personal research or study, educational, or not-for-profit purposes without prior permission or charge. Provided that the authors, title and full bibliographic details are credited, a hyperlink and/or URL is given for the original metadata page and the content is not changed in any way.



## ORIGINAL ARTICLE

## Subcortical volumetric abnormalities in bipolar disorder

DP Hibar<sup>1</sup>, LT Westlye<sup>2,3</sup>, TGM van Erp<sup>4</sup>, J Rasmussen<sup>4</sup>, CD Leonardo<sup>1</sup>, J Faskowitz<sup>1</sup>, UK Haukvik<sup>2,5</sup>, CB Hartberg<sup>2</sup>, NT Doan<sup>2</sup>, I Agartz<sup>2,5</sup>, AM Dale<sup>6,7</sup>, O Gruber<sup>8,9</sup>, B Krämer<sup>8</sup>, S Trost<sup>8</sup>, B Liberg<sup>10</sup>, C Abé<sup>11</sup>, CJ Ekman<sup>10</sup>, M Ingvar<sup>11,12,13</sup>, M Landén<sup>14,15</sup>, SC Fears<sup>16,17</sup>, NB Freimer<sup>17</sup>, CE Bearden<sup>17,18,19</sup>, the Costa Rica/Colombia Consortium for Genetic Investigation of Bipolar Endophenotypes, E Sprooten<sup>20,21</sup>, DC Glahn<sup>20,21</sup>, GD Pearlson<sup>20,21,22</sup>, L Emsell<sup>23</sup>, J Kenney<sup>23</sup>, C Scanlon<sup>23</sup>, C McDonald<sup>23</sup>, DM Cannon<sup>23</sup>, J Almeida<sup>24</sup>, A Versace<sup>25</sup>, X Caseras<sup>26</sup>, NS Lawrence<sup>27</sup>, ML Phillips<sup>26</sup>, D Dima<sup>28,29</sup>, G Delvecchio<sup>28</sup>, S Frangou<sup>29</sup>, TD Satterthwaite<sup>30</sup>, D Wolf<sup>30</sup>, J Houenou<sup>31,32</sup>, C Henry<sup>32,33</sup>, UF Malt<sup>34,35,36</sup>, E Bøen<sup>5,34,35,37</sup>, T Elvsåshagen<sup>2,34,35,38</sup>, AH Young<sup>39</sup>, AJ Lloyd<sup>40</sup>, GM Goodwin<sup>41</sup>, CE Mackay<sup>41</sup>, C Bourne<sup>41,42</sup>, A Bilderbeck<sup>41,43</sup>, L Abramovic<sup>44</sup>, MP Boks<sup>44</sup>, NEM van Haren<sup>44</sup>, RA Ophoff<sup>17,44</sup>, RS Kahn<sup>44</sup>, M Bauer<sup>45</sup>, A Pfennig<sup>45</sup>, M Alda<sup>46</sup>, T Hajek<sup>46,47</sup>, B Mwangi<sup>48</sup>, JC Soares<sup>48</sup>, T Nickson<sup>49</sup>, R Dimitrova<sup>49</sup>, JE Sussmann<sup>49</sup>, S Hagenaars<sup>49</sup>, HC Whalley<sup>49</sup>, AM McIntosh<sup>49</sup>, PM Thompson<sup>1,18</sup>, OA Andreassen<sup>2</sup> for the ENIGMA Bipolar Disorder Working Group

Considerable uncertainty exists about the defining brain changes associated with bipolar disorder (BD). Understanding and quantifying the sources of uncertainty can help generate novel clinical hypotheses about etiology and assist in the development of biomarkers for indexing disease progression and prognosis. Here we were interested in quantifying case–control differences in intracranial volume (ICV) and each of eight subcortical brain measures: nucleus accumbens, amygdala, caudate, hippocampus, globus pallidus, putamen, thalamus, lateral ventricles. In a large study of 1710 BD patients and 2594 healthy controls, we found consistent volumetric reductions in BD patients for mean hippocampus (Cohen's  $d = -0.232$ ;  $P = 3.50 \times 10^{-7}$ ) and thalamus ( $d = -0.148$ ;  $P = 4.27 \times 10^{-3}$ ) and enlarged lateral ventricles ( $d = -0.260$ ;  $P = 3.93 \times 10^{-5}$ ) in patients. No significant effect of age at illness onset was detected. Stratifying patients based on clinical subtype (BD type I or type II) revealed that BDI patients had significantly larger lateral ventricles and smaller hippocampus and amygdala than controls. However, when comparing BDI and BDII patients directly, we did not detect any significant differences in brain volume. This likely represents similar etiology between BD subtype classifications. Exploratory analyses revealed significantly larger thalamic volumes in patients taking lithium compared with patients not taking lithium. We detected no significant differences between BDII patients and controls in the largest such comparison to date. Findings in this study should be interpreted with caution and with careful consideration of the limitations inherent to meta-analyzed neuroimaging comparisons.

*Molecular Psychiatry* advance online publication, 9 February 2016; doi:10.1038/mp.2015.227

<sup>1</sup>Imaging Genetics Center, University of Southern California, Los Angeles, CA, USA; <sup>2</sup>Division of Mental Health and Addiction, Norwegian Centre for Mental Disorders Research, KG Jebsen Centre for Psychosis Research, Oslo University Hospital, Oslo, Norway; <sup>3</sup>Department of Psychology, University of Oslo, Oslo, Norway; <sup>4</sup>Department of Psychiatry and Human Behavior, University of California, Irvine, CA, USA; <sup>5</sup>Department of Psychiatric Research, Diakonhjemmet Hospital, Oslo, Norway; <sup>6</sup>MMIL, Department of Radiology, University of California, San Diego, CA, USA; <sup>7</sup>Department of Cognitive Science, Neurosciences and Psychiatry, University of California, San Diego, CA, USA; <sup>8</sup>Center for Translational Research in Systems Neuroscience and Psychiatry, Department of Psychiatry and Psychotherapy, Georg August University Goettingen, Goettingen, Germany; <sup>9</sup>Section for Experimental Psychopathology and Neuroimaging, Department of General Psychiatry, Heidelberg University Hospital, Heidelberg, Germany; <sup>10</sup>Department of Clinical Neuroscience, Section of Psychiatry, Karolinska Institutet, Stockholm, Sweden; <sup>11</sup>Osher Center for Integrative Medicine, Karolinska Institutet, Stockholm, Sweden; <sup>12</sup>Karolinska MR Research Center, Karolinska Institutet, Stockholm, Sweden; <sup>13</sup>Department of Neuroradiology, Karolinska University Hospital, Stockholm, Sweden; <sup>14</sup>Department of Psychiatry and Neurochemistry, Institute of Neuroscience and Physiology, University of Gothenburg, Gothenburg, Sweden; <sup>15</sup>Department of Medical Epidemiology and Biostatistics, Karolinska Institutet, Stockholm, Sweden; <sup>16</sup>Department of Psychiatry and Biobehavioral Sciences, University of California, Los Angeles, CA, USA; <sup>17</sup>Center for Neurobehavioral Genetics, University of California, Los Angeles, CA, USA; <sup>18</sup>Semel Institute for Neuroscience and Human Behavior, University of California, Los Angeles, CA, USA; <sup>19</sup>Department of Psychology, University of California, Los Angeles, CA, USA; <sup>20</sup>Department of Psychiatry, Yale University, New Haven, CT, USA; <sup>21</sup>Olin Neuropsychiatric Research Center, Institute of Living, Hartford, CT, USA; <sup>22</sup>Department of Neurobiology, Yale University School of Medicine, New Haven, CT, USA; <sup>23</sup>Clinical Neuroimaging Laboratory, College of Medicine, Nursing and Health Sciences, National University of Ireland Galway, Galway, Ireland; <sup>24</sup>Department of Psychiatry, Brown University, Providence, RI, USA; <sup>25</sup>Department of Psychiatry, University of Pittsburgh, Western Psychiatric Institute and Clinic, Pittsburgh, PA, USA; <sup>26</sup>MRC Centre for Neuropsychiatric Genetics and Genomics, Institute of Psychological Medicine and Clinical Neurosciences, Cardiff University, Cardiff, UK; <sup>27</sup>School of Psychology, University of Exeter, Exeter, UK; <sup>28</sup>Institute of Psychiatry, Psychology and Neuroscience, King's College London, London, UK; <sup>29</sup>Department of Psychiatry, Icahn School of Medicine at Mount Sinai, New York, NY, USA; <sup>30</sup>Department of Psychiatry, University of Pennsylvania Perelman School of Medicine, Philadelphia, PA, USA; <sup>31</sup>Neurospin, UMR 1288, CEA Saclay, Saclay, France; <sup>32</sup>Inserm, U955, Equipe 15 Psychiatrie génétique, Créteil, France; <sup>33</sup>Université Paris-Est, UMR-S955, UPEC, Créteil, France; <sup>34</sup>Department of Psychosomatic Medicine, Oslo University Hospital—Rikshospitalet, Oslo, Norway; <sup>35</sup>Institute of Clinical Medicine, University of Oslo, Oslo, Norway; <sup>36</sup>Department of Research and Education, Oslo University Hospital, Oslo, Norway; <sup>37</sup>Norwegian Research Network On Mood Disorders, Oslo, Norway; <sup>38</sup>Department of Neurology, Oslo University Hospital, Oslo, Norway; <sup>39</sup>Centre for Affective Disorders, King's College London, London, UK; <sup>40</sup>Academic Psychiatry and Regional Affective Disorders Service, Newcastle University, Newcastle, UK; <sup>41</sup>Department of Psychiatry, University of Oxford, Oxford, UK; <sup>42</sup>Department of Psychology and Counselling, Newman University, Birmingham, UK; <sup>43</sup>University of Oxford Centre for Clinical Magnetic Resonance Research, Oxford, UK; <sup>44</sup>Department of Psychiatry, University Medical Centre Utrecht - Brain Centre Rudolf Magnus, Utrecht, The Netherlands; <sup>45</sup>Department of Psychiatry and Psychotherapy, Carl Gustav Carus University Hospital, Medizinische Fakultät, Technische Universität Dresden, Dresden, Germany; <sup>46</sup>Department of Psychiatry, Dalhousie University, Halifax, Canada; <sup>47</sup>National Institute of Mental Health, Klecany, Czech Republic; <sup>48</sup>UT Center of Excellence on Mood Disorders, Department of Psychiatry and Behavioral Sciences, UT Houston Medical School, Houston, TX, USA and <sup>49</sup>Division of Psychiatry, University of Edinburgh, Edinburgh, UK. Correspondence: Professor OA Andreassen, Division of Mental Health and Addiction, Norwegian Centre for Mental Disorders Research, KG Jebsen Centre for Psychosis Research, Oslo University Hospital, Ullevål, NORMENT, KG Jebsen Centre for Psychosis Research - TOP Study, Building 49, Kirkeveien 166, PO Box 4956 Nydalen, Oslo 0424, Norway. E-mail: o.a.andreassen@medisin.uio.no

## INTRODUCTION

Bipolar disorder (BD) is a recurrent, severe illness characterized by episodes of mania (or hypomania) and depression, and affects ~1–3% of the population.<sup>1</sup> The disease is highly heritable<sup>2</sup> but the underlying pathophysiology is not yet understood. Although structural brain abnormalities in BD have been reported, the pattern of structural brain abnormalities based on magnetic resonance imaging (MRI) is still not clearly defined. A set of retrospective meta-analyses of structural MRI studies of BD and healthy controls found right lateral ventricular enlargement in patients as the only consistent volumetric difference based on previously published studies.<sup>3–5</sup> However, several studies report detectable differences in the dorsolateral prefrontal cortex,<sup>6</sup> the ventrolateral prefrontal cortex,<sup>7</sup> and the anterior and subgenual cingulate cortices.<sup>8</sup> Meta-analytic studies highlight the substantial heterogeneity across studies for several structures of interest, notably the amygdala and thalamus.<sup>3</sup> Previously, a mega-analysis combined data from multiple sites around the world into a single model, and found differences in lateral ventricle, temporal lobe and putamen volume.<sup>9</sup>

The sources of the heterogeneity in previously reported findings are likely to be multifactorial and complex. First, there may be true biological variability across cohorts, that may derive from clinical phenotypes such as disease severity and duration, medication status and history, and co-morbidity. One much debated source of bias in the study of brain volumetric associations with BD is the effect of mood-stabilizing medications, primarily lithium, which may influence brain structure in individual studies,<sup>10</sup> meta-analyses,<sup>11</sup> as well as mega-analyses.<sup>9</sup> However, it is difficult to distinguish unique effects of pharmacological agents on brain volumes from concurrent effects of clinical and demographic variables, which are likely to interact with medication status, and may even influence which medications are prescribed. Second, variability in the neuroimaging data acquisition, processing and analysis protocols can affect the sensitivity and apparent variability of the brain measures, making it challenging to compare different studies directly.

To address several of these issues, we formed an international collaboration for the study of BD as part of the Enhancing Neuroimaging Genetics through Meta-Analysis (ENIGMA) Consortium.<sup>12</sup> Here, we aimed to identify subcortical brain volumetric changes<sup>13,14</sup> that may consistently distinguish BD patients from healthy controls using a coordinated meta-analysis approach that builds on the work from Hallahan *et al.*<sup>9</sup> A number of the studies included in this ENIGMA project have examined volumetric brain differences previously (see Supplementary Table 2 citations), but this effort combines many new sites and additional data in a coordinated analysis. We also aimed to examine and characterize sources of heterogeneity in brain imaging volumetric indices using exploratory analyses based on BD subtype (I or II), age at illness onset, commonly prescribed medications, and mood state. In the present study, we focused on subcortical structures for three primary reasons: (1) they are critically involved in emotional response and memory, hallmark behavioral features of BD;<sup>15–17</sup> (2) they are reliably measured across sites, as detailed in extensive comparisons of multi-site/scanner analyses (see Supplementary Tables 5 and 6a and h);<sup>18,19</sup> and (3) are key components in dysregulation network connections which interplays with the cortex.<sup>20</sup>

## MATERIALS AND METHODS

### Studies

Samples contributing to this project and demographics by site are given in Supplementary Table 1. Participating sites were contacted to collaborate on this project through the ENIGMA Consortium, after advertising the goals of the project on the ENIGMA website and at numerous international conferences in neuroimaging and psychiatry; none of the sites contacted refused or were unable to participate in this project. In total, data from 4304 subjects including 1710 cases and 2594 healthy controls were

available for analysis. Each participating site obtained approval from an institutional review board or local ethics committee, and all study participants signed informed consent documents at their local institution.

### Image acquisition and segmentation

High-resolution T<sub>1</sub>-weighted MRI brain scans were acquired at each of the 20 participating sites. Detailed information on scanner sequence and acquisition parameters are found in Supplementary Table 2. A description of image and volume segmentation quality control is given in Supplementary Note 1.

### Specification of statistical models and coordinated analysis across sites

The present study involved coordinated analysis of brain structural MRI scans. Our primary focus was on the mean volumetric differences between patients with BD and healthy controls in seven subcortical brain structures: nucleus accumbens, caudate, globus pallidus, putamen, amygdala, hippocampus and thalamus. We also assessed lateral ventricular volume and total intracranial volume (ICV). Within each sample, we used multiple linear regression to quantify the differences between BD patients and healthy controls, whereas accounting for age, sex and differences in head size (ICV) as covariates. For each structure, we calculated effect size estimates using Cohen's *d*, adjusted for age, sex and ICV, using the *t*-statistic from the diagnosis predictor variable (coded as patients=1; controls=0).<sup>21</sup> As an extension of this model, we examined age-by-diagnosis and sex-by-diagnosis interactions using the *t*-statistic from the interaction predictor variable (while leaving age, sex and diagnosis predictors in the model) to calculate an adjusted Cohen's *d* effect size estimate. A description of the meta-analytical framework and reported statistics is given in Supplementary Note 2.

### Analysis of differences in diagnosis subtype, mood state, age of illness onset and medications

To investigate brain differences associated with the clinical phenotype we examined whether there were detectable differences between BD subtypes, focusing on patients diagnosed with BDI and BDII. Methods for determining subtype at each site are given in Supplementary Table 3. We performed three separate meta-analyses comparing: BDI patients with controls, BDII patients with controls and BDI with BDII patients following the same model as in the section described above. Similarly, we examined how mood state at the time of scanning influenced brain structure. Mood state data were available from 13 sites; patients were categorized into six different categories: euthymic, depressed, manic, hypomanic, mixed and unknown. Tabulated results showing the number of subjects with a given mood state at the time of scanning is available in Supplementary Table 1. A further description is available for mood state, age of illness onset, medications and the tests performed can be found in Supplementary Note 3.

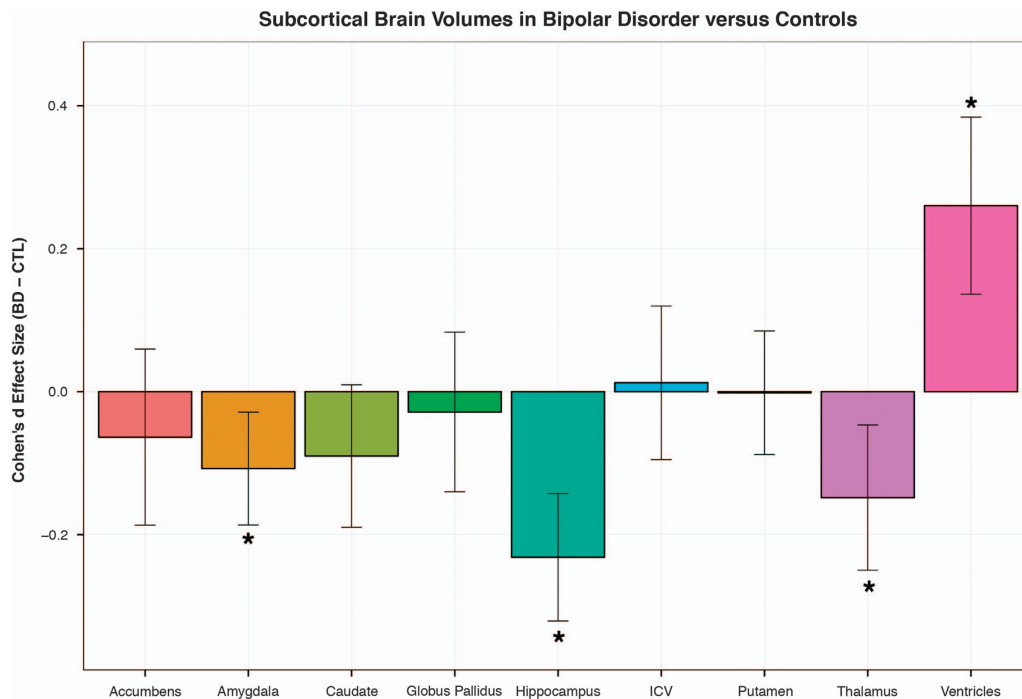
### Determination of statistical significance threshold

In total we performed 225 tests (25 separate analyses looking at nine mean brain volumes). We controlled for multiple comparisons using the false discovery rate<sup>22</sup> at  $q=0.05$ , which corresponds to a *P*-value significance threshold of  $P_{\text{thresh}} < 4.91 \times 10^{-3}$ . Throughout the manuscript we report uncorrected *P*-values, but indicate when a test is significant.

## RESULTS

### Subcortical volume differences between patients with BD and healthy individuals

Patients with BD had significantly lower bilateral mean volumes of the hippocampus ( $d = -0.232$ ;  $P = 3.50 \times 10^{-7}$ ), thalamus ( $d = -0.148$ ;  $P = 4.27 \times 10^{-3}$ ) and trending significant reduction in amygdala ( $d = -0.108$ ;  $P = 7.65 \times 10^{-3}$ ). Patients also had significantly larger lateral ventricles ( $d = 0.260$ ;  $P = 3.93 \times 10^{-5}$ ) than healthy controls. None of the other five structures investigated (accumbens, caudate, globus pallidus, putamen and ICV) showed significant differences between BD cases and controls (Figure 1). Mean volumes (and s.e.) corrected for age, sex and ICV by site and by diagnosis are available in Supplementary Table 7. Unadjusted means split by site and by



**Figure 1.** Adjusted Cohen's *d* estimates for all BD patients versus controls. Effect sizes for the volumetric differences between bipolar disorder (BD) cases and controls (CTL), after accounting for age, sex and intracranial volume over all brain regions of interest. Error bars show mean effect size  $\pm$  s.e.m. Effect sizes were considered significant (marked with \*) if they exceeded the study-wide significance threshold ( $P < 4.91 \times 10^{-3}$ ).

diagnosis are available in Supplementary Table 8. Forest plots of effect sizes for each structure across all sites are shown in Supplementary Figure 1a and c.

#### Interactive effects of age and sex with BD diagnosis

We examined each of the nine brain structures in our study for age-by-diagnosis and sex-by-diagnosis interactions. We found significant evidence of decreased hippocampal volume in older patients ( $d = -0.104$ ;  $P = 3.81 \times 10^{-3}$ ). No other structures had significant interactive effects between age and diagnosis (Supplementary Table 9). Further, we tested for sex-by-diagnosis interactions for each structure and found significant evidence of increased thalamus volume in female patients with BD ( $d = 0.202$ ;  $P = 9.65 \times 10^{-5}$ ). No other structures had significant interactive effects between sex and diagnosis (Supplementary Table 10).

#### Effects of bipolar diagnosis subtype, mood state and age of onset on subcortical brain volumes

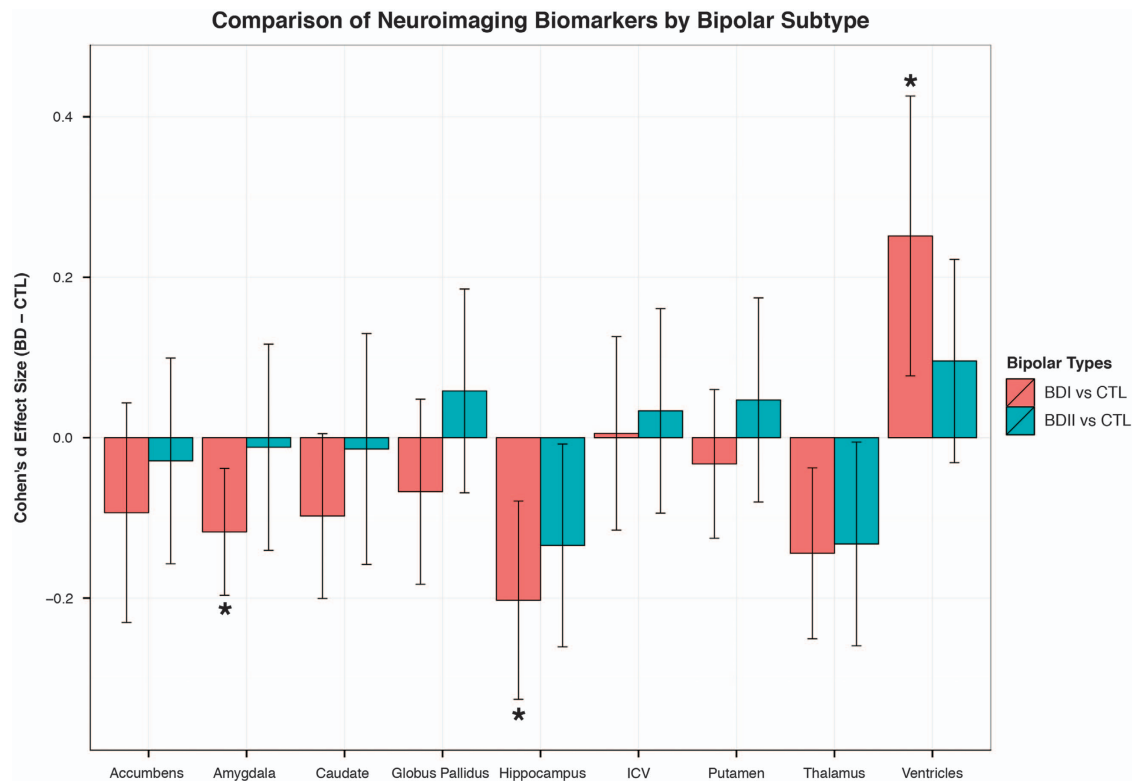
We did not find any significant volumetric differences when directly comparing BDI with BDII patients (Supplementary Table 11). When comparing BDI and BDII separately with controls, the direction of effects (an increase or decrease in volume) for each structure was similar regardless of subtype (Supplementary Tables 12–13). However, the magnitude of case–control differences on brain volumes was consistently larger in patients with BDI (Figure 2). Patients diagnosed with BDI had significantly smaller volumes of the hippocampus ( $d = -0.203$ ;  $P = 1.31 \times 10^{-3}$ ) and amygdala ( $d = -0.117$ ;  $P = 3.63 \times 10^{-3}$ ), and larger lateral ventricle volumes ( $d = 0.251$ ;  $P = 4.70 \times 10^{-3}$ ) compared with controls. In contrast, none of the subcortical brain volumes of BDII patients were significantly different from healthy controls. Further, we did not find evidence of an association between brain volume differences in any structure with age of onset (Supplementary Table 14).

When examining case/control differences across sites with mood state data available, we found a significant increase in lateral ventricular volume in patients compared with controls ( $d = 0.318$ ;  $P = 6.06 \times 10^{-4}$ ). Mean hippocampal volume was decreased at a nominally significant level ( $d = -0.214$ ;  $P = 0.016$ ), but was not strictly significant after correction for multiple comparisons (Supplementary Table 15). We found that a subset of euthymic patients ( $n = 401$ ) had significantly decreased hippocampal volume compared with healthy controls ( $d = -0.233$ ;  $P = 1.53 \times 10^{-3}$ ). None of the other structures showed significant differences (Supplementary Table 16). In addition, we found that a subset of depressed patients ( $n = 134$ ) showed a trending significant increase in lateral ventricular volume compared with healthy controls ( $d = 0.377$ ;  $P = 8.00 \times 10^{-3}$ ). None of the other structures showed significant differences between depressed patients and controls (Supplementary Table 17). A direct comparison between euthymic and depressed patients was not possible given small sample sizes (the number of studies with both euthymic and depressed patients was too low;  $n = 6$ ).

#### Medication effects on brain volume in patients with BD

We examined the effect of treatment at the time of scanning with lithium, antiepileptics, antidepressants, atypical and typical antipsychotics on brain volume in BD patients (Supplementary Tables 18–32). We found that patients treated with lithium at the time of scanning had larger thalamic volumes compared with patients not taking lithium ( $d = -0.207$ ;  $P = 7.31 \times 10^{-4}$ ). In addition, we found that patients taking antiepileptics had significantly reduced hippocampal volume ( $d = -0.189$ ;  $P = 4.91 \times 10^{-3}$ ) compared with patients not taking antiepileptics (Supplementary Figure 2a). We further performed a comparison between the brain volumes of patients taking (or not taking) a given medication with the brain volumes of healthy controls. Patients that were not taking lithium at the time of scanning had significantly smaller hippocampal and thalamic volumes and larger lateral ventricles compared with





**Figure 2.** Adjusted Cohen's *d* estimates for BD patients split by diagnosis subtype (type I or type II) versus controls. Effect sizes for the volumetric differences between bipolar disorder (BD) type I and controls (CTL) are shown in red and BD II and controls are shown in green. All effect sizes are reported after accounting for age, sex and intracranial volume. Error bars show mean effect size  $\pm$  s.e.m. Effect sizes were considered significant (marked with \*) if they exceeded the study-wide significance threshold ( $P < 4.91 \times 10^{-3}$ ).

controls (Supplementary Figure 2; Supplementary Table 19), whereas in patients receiving lithium therapy hippocampal volumes were comparable to controls.

## DISCUSSION

One of the major points of uncertainty in BD has centered on potential volumetric changes in the hippocampus. Two large single-site studies reported a significant hippocampal reduction<sup>23,24</sup> but other multi-site studies reported no significant differences.<sup>3–5,9</sup> Also, smaller hippocampal volumes relative to controls were reported in a meta-analysis of BD patients not taking Li<sup>11</sup> with Cohen's  $d = -0.36$  ( $-0.55, -0.17$ ) for the left hippocampus and  $d = -0.38$  ( $-0.63, -0.13$ ) for the right. Our estimated Cohen's  $d = -0.24$  ( $-0.37, -0.12$ ) for non-lithium treated patients is largely in agreement. We re-ran the meta-analysis excluding data from the two single-site studies mentioned previously (Fears *et al.*<sup>24</sup> and Rimol *et al.*<sup>23</sup>) and observed a nearly identical reduction of hippocampal volume ( $d = -0.220$ ;  $P = 6.95 \times 10^{-5}$ ) (Supplementary Table 33). Upon further examination, we found a significant age-by-diagnosis interaction whereby increasing age in patients was associated with a decrease in hippocampal volume ( $d = -0.104$ ;  $P = 3.81 \times 10^{-3}$ ; Supplementary Table 9). This finding may reflect accelerated hippocampal atrophy in patients or progressive effects of chronic illness or medication on the hippocampus of patients.

Our finding of enlarged lateral ventricle volume (Cohen's  $d = 0.26$ ) is in line with a previous mega-analysis by Hallahan and colleagues who reported a  $d = 0.15$  for right lateral ventricle.<sup>9</sup> Because the UCLA-BP study includes unaffected relatives as controls we re-ran the analysis with that study excluded but this did not change the results (Supplementary Table 35). Similarly, exclusion of data with poor age matching (the Halifax and CLING studies) did not alter the results (Supplementary Table 36).

We found a significant reduction in thalamus volume in BD patients as in our previous study by Rimol *et al.*<sup>23</sup> However, none of the comparable multi-site meta-analyses showed effects significantly different from zero for the thalamus.<sup>3–5,9</sup> To further examine case-control differences in thalamic volume we undertook additional analysis. First, we removed the data from the study by Rimol *et al* and re-ran the analysis. Case-control differences in thalamic volume remained nominally significant ( $d = -0.11$ ;  $P = 0.013$ ; Supplementary Table 34). Second, we re-ran the analysis excluding data from the UCLA-BP study and found that the volume reduction in the thalamus remained nominally significant (Supplementary Table 35). Third, when the Halifax and CLING samples were removed the effect on thalamus volume was reduced but still nominally significant (Supplementary Table 36). Finally, we found evidence of a significant sex-by-diagnosis interaction whereby female patients with BD had significantly increased mean thalamic volume ( $d = 0.202$ ;  $P = 9.65 \times 10^{-5}$ ; Supplementary Table 10). However, this finding conflicts with previous reports showing no evidence of sex-by-diagnosis interactions.<sup>23</sup> The likely cause of the sex-by-diagnosis interactive effect is unknown at this time, but deserves further investigation.

Previous literature-based meta-analyses had been unable to detect a case-control difference in the amygdala. Individual studies in adults with BD had reported either increase or no change in amygdala volume.<sup>25,26</sup> In contrast, reduced amygdala volume has been repeatedly reported in adolescents with BD<sup>27</sup> and has been attributed to abnormalities in the developmental trajectory of this region in adolescence.<sup>28</sup> In the present study, case-control differences in amygdala volume were only nominally significant when the UCLA-BP, Halifax and CLING studies were excluded. No significant effects of age of illness onset (Supplementary Table 14) or age-by-diagnosis interactions (Supplementary Table 9) were detected in amygdala volume,

**Table 1.** Effect sizes differences between all BD cases and controls (Cohen's *d*) for the mean volume of each structure controlling for age, sex and intracranial volume

	BD–CTL (SE)	95% CI	Percent difference	Z-score	P	I <sup>2</sup>	Het. P	# CTL	# BD	Hedges' g
Lateral ventricle	0.260 ± 0.063	(0.136–0.384)	16.098	4.111	3.93 × 10 <sup>−5</sup>	65.4	1.64 × 10 <sup>−6</sup>	2592	1708	0.261
Thalamus	−0.148 ± 0.052	(−0.250 to −0.047)	−1.156	−2.858	4.27 × 10 <sup>−3</sup>	48.6	6.58 × 10 <sup>−3</sup>	2589	1702	−0.147
Caudate	−0.09 ± 0.051	(−0.190–0.010)	−0.967	−1.773	0.076	46.0	0.017	2586	1704	−0.090
Putamen	−0.001 ± 0.044	(−0.088–0.085)	0.054	−0.034	0.973	30.2	0.073	2588	1704	−0.001
Globus pallidus	−0.028 ± 0.057	(−0.140–0.083)	−0.285	−0.498	0.618	57.4	1.53 × 10 <sup>−3</sup>	2588	1707	−0.028
Hippocampus	−0.232 ± 0.045	(−0.321 to −0.143)	−2.010	−5.094	3.50 × 10 <sup>−7</sup>	33.9	0.049	2582	1705	−0.232
Amygdala	−0.108 ± 0.040	(−0.187 to −0.029)	−1.068	−2.667	7.65 × 10 <sup>−3</sup>	19.4	0.304	2590	1703	−0.107
Accumbens	−0.064 ± 0.063	(−0.187–0.060)	−0.929	−1.013	0.311	65.1	6.86 × 10 <sup>−5</sup>	2567	1689	−0.064
ICV	0.012 ± 0.055	(−0.095–0.120)	0.155	0.225	0.822	52.9	1.75 × 10 <sup>−4</sup>	2594	1710	0.012

Abbreviations: BD, bipolar disorder; CI, confidence interval; CTL, controls; ICV, intracranial volume. The percent difference is the mean change in volume of a structure in bipolar patients versus controls as a percent of the total volume of the structure in controls. *I*<sup>2</sup> gives the estimate of the total heterogeneity as a proportion of the total variability for each measure. Uncorrected *P*-values are reported. Effect size differences are considered significant (marked with \*) if they exceed  $P < 4.91 \times 10^{-3}$  (see Methods for threshold determination).

but this hypothesis might be better tested in a data set that specifically includes adolescents. Further, brain changes over time related to age of illness onset and duration are best studied in longitudinal models rather than cross-sectional evaluations of large cohorts.<sup>29,30</sup>

We also examined the effect of FreeSurfer version used for segmentation. We found that the between-version agreement (Supplementary Table 6a and h) was largely in line with the within-version test–retest reliability (Supplementary Table 5). The only case that seems problematic is v4.2 segmentations of the globus pallidus; they seem to be consistently different than estimates from the other versions. Only one of the data sets in our consortium used v4.2 (UCLA-BP) and the globus pallidus results are unchanged when running the meta-analysis with that study dropped (see Supplementary Table 35). This suggests that subcortical volumes segmented with different versions of FreeSurfer are comparable.

The current findings of subcortical reduction in BD demonstrate the sensitivity of volumetric assessment, but do not necessarily implicate pathogenic specificity of subcortical structures in BD. van Erp *et al.*<sup>31</sup> reported significantly lower hippocampus, thalamus and amygdala volumes and significantly larger lateral ventricles and globus pallidus volumes in patients with schizophrenia relative to healthy controls, suggesting that BD and schizophrenia may share some common pathogenic mechanisms associated with medial temporal lobe volume reduction, which has been hypothesized to be related to excessive glucocorticoid activity.<sup>31–33</sup> In general, the effects of schizophrenia on subcortical brain volumes seem to be stronger than those of BD. This trend has been observed in prior single-site studies,<sup>23</sup> which may be related to the relatively greater neurodevelopmental disruption characteristic of schizophrenia.<sup>34,35</sup> Similarly, Schmaal *et al.*<sup>36</sup> examined subcortical differences in major depressive disorder and found significant reductions in the hippocampal volume of major depressive disorder patients compared with healthy controls. However, the observed effect sizes and pattern of effects seem to be much milder than those observed in schizophrenia and BD.

We tested whether BDI (*n* = 862) or BDII (*n* = 317) are associated with similar brain structural changes. We did not detect any significant differences between patients with BDI and BDII diagnoses (Supplementary Table 11) although we would have 80% power to detect differences of  $d = 0.087$  (Supplementary Note 4). When comparing each subtype separately with healthy controls, we found that the pattern of case–control differences in the volume of hippocampus, amygdala, thalamus and lateral ventricles was similar for both subtypes (Supplementary Tables 12–13). These differences were more pronounced in BDI patients, who showed significantly smaller hippocampal and amygdala

volumes and significantly larger lateral ventricles volumes relative to controls. In contrast, there were no significant differences between BDII patients and controls (Figure 2). The literature examining volumetric brain differences in BDII is decidedly sparse<sup>4,5</sup> and therefore most but not all<sup>4</sup> large literature-based, meta-analyses prior to this study grouped all BD subtypes together; likely due to under-reporting of diagnosis subtype in individual studies. Furthermore, we found that the effect sizes when examining BDI patients alone were slightly smaller than the effect sizes in a model that includes all BD patients regardless of subtype (Table 1; Supplementary Table 12). These results in the current samples suggest that there were no detectable volumetric differences in subcortical brain structures between BDI and BDII. The lack of detected differences between the two subtypes mirrors findings in genetics, which also were unable to find significant genetic patterns that distinguish BDI and BDII patients despite large sample sizes.<sup>37</sup> Future work is needed to further disentangle the complex factors that may manifest as distinct BD subtypes but have similar genetic and volumetric brain patterns.

We examined the effect of mood state at the time of scanning to assess whether mood moderates BD effect size differences. We examined only euthymic and depressed mood states compared with controls due to the small sample sizes available of patients scanned during a hypomanic, manic or mixed state. We found that euthymic patients had significantly decreased hippocampal volume compared with controls, which was not detected in depressed patients ( $d = -0.233$ ;  $P = 1.53 \times 10^{-3}$ ). However, none of the other comparisons made were significant after multiple comparisons correction. Further, a direct comparison between euthymic and depressed patients was not possible given the small sample sizes. As the decrease in hippocampal volume was only detected in euthymic patients and not in depressed patients, further investigation is warranted. However, caution is needed in interpreting these results given differences in sample size between the two groups. A direct comparison between the two groups would provide a more definitive assessment in the future. The findings related to mood state highlight some of the limitations and weaknesses of our approach whereby neurobiological findings cannot readily be mapped onto clinical variables and therefore have limited clinical value.

Medication is arguably one of the most widely debated sources of heterogeneity in the brain morphological signature of BD. Much of the BD literature has focused on the effects of lithium.<sup>10,38,39</sup> In animal models, lithium has been shown to have neurotrophic effects in the hippocampus<sup>40</sup> but the mechanism of action is unclear.<sup>41,42</sup> We performed the largest comparison of BD patients taking (*n* = 535) and not taking (*n* = 845) lithium to date (Supplementary Table 20). We found that patients taking lithium

had significantly larger thalamic volumes than patients not taking lithium ( $d = 0.207$ ;  $P = 7.31 \times 10^{-4}$ ). However, significant effects of lithium on thalamic volume were not detected in other large studies of BD.<sup>5,9</sup> We did not observe significant effects of lithium in other structures (that is, hippocampus and amygdala) both of which have been studied extensively in the literature.<sup>5,9,11</sup> In addition to the moderating effects of lithium, we examined the effects of treatments of four commonly prescribed medication groups: antiepileptics, antidepressants, atypical and typical antipsychotics (Supplementary Figure 2). It is difficult to distinguish medication effects on brain volumes from concurrent effects of clinical and demographic variables, which interact closely with medication status.<sup>43,44</sup> It is possible as well that patients that recently stopped taking a particular medication could be considered to be 'not currently taking a medication' potentially biasing medication effect estimates. The quality of information concerning medication effects on brain correlates can be improved using longitudinal methods along with tightly controlled medication access and reporting. Further longitudinal studies of specific medications are needed to disentangle medication effects on the brain from other moderating effects or disease effects.

A major strength of this study is the large numbers and the ability to harmonize, as far as possible the data, which, in the case of imaging data, can be quite a daunting task. However, the current study has limitations regarding the heterogeneity of the sample and potential clinical confounds. Thus, the current findings should be interpreted with caution and need to be replicated in independent cohorts. In addition, there are several key limitations to our study: (1) Samples were collected and analyzed at different sites; we coordinated our work to maximize homogeneity across sites, but differences persist. We showed that scanner field strength, voxel volume and the version of FreeSurfer used for segmentation do not significantly influence ( $P < 0.05$ ) the effect size estimates in our analysis (Supplementary Table 37). (2) We examined the moderating effects of medication, but caution is needed in interpreting these effects, as differences in medication status are likely to interact with illness characteristics. Differences in the clinical definitions of medication use and history could potentially confound the estimates in this study in unexpected ways. Also, we did not test or account for possible interactions between different pharmacological agents although the majority of patients were treated with a combination of agents. However, longitudinal studies of medication effects show that most medications are likely to have a null or deleterious effect on the brain<sup>45</sup> with the exception of lithium, which may have neuroprotective effects.<sup>39</sup> (3) Most sites used the structured interview (DSM-IV) for diagnosis, but some heterogeneity in diagnosis inevitably exists across sites and findings should be interpreted with care as they reflect the heterogeneity inherent to a large multicenter/multinational comparison. (4) Drug and alcohol dependence or abuse may be another source of heterogeneity. These data were not uniformly available within the cohorts in this study, but the potential impact of alcohol abuse on ventricular volume has been demonstrated before,<sup>46</sup> and is being analyzed by ENIGMA's addictions working group. (5) Finally, our hypotheses explore the effects of BD on subcortical brain structures and we did not assess effects elsewhere in the brain (for example, cortex, white matter tracts). It is known that neural networks subserve emotional processing and regulation and that these almost certainly engage a number of cortical structures. However, the current study was limited to subcortical data. The analysis of cortical data will need another analytical approach, with additional methodological challenges, which is currently ongoing.

We have demonstrated a pattern of reduced volumes of the hippocampus, thalamus and amygdala in patients with BD. Whereas one should avoid making strong functional interpretations based on brain volume differences alone, these findings

pertain to neurocircuitry implicated in emotional processing and executive behavior,<sup>47</sup> and nevertheless provide important information regarding the neurobiology of BD.<sup>48</sup> Several functional MRI studies report dysfunction in these regions during manic or depressive episodes,<sup>49</sup> and post mortem gene expression studies have also implicated these structures.<sup>50</sup> Mood-stabilizing drugs may also act in this region.<sup>51</sup> Further, we provide strong statistical evidence of a lack of difference in the biological signature of BD subtypes. These findings should be interpreted with caution given the limitations outlined throughout the manuscript, especially with consideration for the heterogeneity involved in using meta-analysis to combine neuroimaging data across sites.

## CONFLICT OF INTEREST

The authors declare no conflict of interest.

## ACKNOWLEDGMENTS

We acknowledge members of the International Group for the Study of Lithium Treated Patients (IGSLi) and Costa Rica/Colombia Consortium for Genetic Investigation of Bipolar Endophenotypes. The Halifax studies have been supported by grants from Canadian Institutes of Health Research (103703, 106469 and 64410), the Nova Scotia Health Research Foundation, Dalhousie Clinical Research Scholarship to T Hajek. We also acknowledge research funding sources: TOP is supported by the Research Council of Norway, the South East Norway Health Authority, the Kristian Gerhard Jebsen Foundation and the European Community's Seventh Framework Programme (FP7/2007–2013), grant agreement no. 602450. Cardiff is supported by the National Centre for Mental Health (NCMH) and Bipolar Disorder Research Network (BDRN). The Paris sample is supported by the French National Agency for Research (MNP 2008) and the Fondamental Foundation. The St Göran bipolar project (SBP) is supported by grants from the Swedish Medical Research Council, the Swedish foundation for Strategic Research, the Swedish Brain foundation and the Swedish Federal Government under the LUA/ALF agreement. The Malt-Oslo sample is supported by the South East Norway Health Authority and by generous unrestricted grants from Mrs Throne-Holst. The UT Houston sample is supported by NIH grant, MH085667. TDS was supported by R01MH107703 and K23MH098130. The UCLA-BP study is supported by NIH grants R01MH075007, R01MH095454, P30NS062691 (NBF), K23MH074644-01 and the Joanne and George Miller Family Endowed Term Chair (CEB) and K08MH086786 (SF). Data collection for the UMCU sample is funded by the NIMH R01 MH090553 (PI Ophoff). The Oxford/Newcastle sample was funded by the Brain Behavior Research Foundation. ENIGMA was supported in part by a Consortium grant (U54 EB020403 to PMT) from the NIH Institutes contributing to the Big Data to Knowledge (BD2K) Initiative, including the NIBIB and NCI.

## AUTHOR CONTRIBUTIONS

Protocol design, quality testing, and meta-analysis: DPH, LTW, TGMV, JR Data collection, processing, analysis and funding: DPH, LTW, TGMV, JR, CDL, JF, UKH, CBH, NTD, IA, AMD, OG, BK, ST, BL, CA, CJE, MI, ML, SCF, NBF, CEB, ES, DCG, GDP, LE, JK, CS, CM, DMC, JA, AV, X.C, NSL, MLP, DD, GD, SF, TS, DW, JH, CH, UFM, EB, TE, AY, AJL, GMG, CEM, CB, AB, LA, MPB, NEMV, RO, RK, MB, AP, MA, TH, BM, JCS, TN, RD, JES, SH, HCW, AMM, PMT, OAA Manuscript preparation: DPH, LTW, PMT, OAA. All authors contributed edits and approved the content of the manuscript.

## REFERENCES

- Merikangas KR, Jin R, He JP, Kessler RC, Lee S, Sampson NA et al. Prevalence and correlates of bipolar spectrum disorder in the world mental health survey initiative. *Arch Gen Psychiatry* 2011; **68**: 241–251.
- McGuffin P, Rijdsdijk F, Andrew M, Sham P, Katz R, Cardno A. The heritability of bipolar affective disorder and the genetic relationship to unipolar depression. *Arch Gen Psychiatry* 2003; **60**: 497–502.
- McDonald C, Zanelli J, Rabe-Hesketh S, Ellison-Wright I, Sham P, Kalidindi S et al. Meta-analysis of magnetic resonance imaging brain morphometry studies in bipolar disorder. *Biol Psychiatry* 2004; **56**: 411–417.
- Kempton MJ, Geddes JR, Ettinger U, Williams SC, Grasby PM. Meta-analysis, database, and meta-regression of 98 structural imaging studies in bipolar disorder. *Arch Gen Psychiatry* 2008; **65**: 1017–1032.



- 5 Arnone D, Cavanagh J, Gerber D, Lawrie SM, Ebmeier KP, McIntosh AM. Magnetic resonance imaging studies in bipolar disorder and schizophrenia: meta-analysis. *Br J Psychiatry* 2009; **195**: 194–201.
- 6 Dickstein DP, Milham MP, Nugent AC, Drevets WC, Charney DS, Pine DS *et al*. Frontotemporal alterations in pediatric bipolar disorder: results of a voxel-based morphometry study. *Arch Gen Psychiatry* 2005; **62**: 734–741.
- 7 Blumberg HP, Krystal JH, Bansal R, Martin A, Dziura J, Durkin K *et al*. Age, rapid-cycling, and pharmacotherapy effects on ventral prefrontal cortex in bipolar disorder: a cross-sectional study. *Biol Psychiatry* 2006; **59**: 611–618.
- 8 Gogtay N, Ordonez A, Herman DH, Hayashi KM, Greenstein D, Vaituzis C *et al*. Dynamic mapping of cortical development before and after the onset of pediatric bipolar illness. *J Child Psychol Psyc* 2007; **48**: 852–862.
- 9 Hallahan B, Newell J, Soares JC, Brambilla P, Strakowski SM, Fleck DE *et al*. Structural magnetic resonance imaging in bipolar disorder: an international collaborative mega-analysis of individual adult patient data. *Biol Psychiatry* 2011; **69**: 326–335.
- 10 Moore GJ, Bebchuk JM, Wilds IB, Chen G, Menji HK. Lithium-induced increase in human brain grey matter. *Lancet* 2000; **356**: 1241–1242.
- 11 Hajek T, Kopecek M, Hoschl C, Alda M. Smaller hippocampal volumes in patients with bipolar disorder are masked by exposure to lithium: a meta-analysis. *J Psychiatry Neurosci* 2012; **37**: 333–343.
- 12 Stein JL, Medland SE, Vasquez AA, Hibar DP, Senstad RE, Winkler AM *et al*. Identification of common variants associated with human hippocampal and intracranial volumes. *Nat Genet* 2012; **44**: 552–561.
- 13 Gottesman II, Gould TD. The endophenotype concept in psychiatry: etymology and strategic intentions. *Am J Psychiatry* 2003; **160**: 636–645.
- 14 Glahn DC, Thompson PM, Blangero J. Neuroimaging endophenotypes: strategies for finding genes influencing brain structure and function. *Hum Brain Mapp* 2007; **28**: 488–501.
- 15 Phan KL, Wager T, Taylor SF, Liberzon I. Functional neuroanatomy of emotion: a meta-analysis of emotion activation studies in PET and fMRI. *NeuroImage* 2002; **16**: 331–348.
- 16 Chen CH, Suckling J, Lennox BR, Ooi C, Bullmore ET. A quantitative meta-analysis of fMRI studies in bipolar disorder. *Bipolar Disord* 2011; **13**: 1–15.
- 17 Kalmar JH, Wang F, Chepenik LG, Womer FY, Jones MM, Pittman B *et al*. Relation between amygdala structure and function in adolescents with bipolar disorder. *J Am Acad Child Adolesc Psychiatry* 2009; **48**: 636–642.
- 18 Morey RA, Selgrade ES, Wagner HR 2nd, Huettel SA, Wang L, McCarthy G. Scan-rescan reliability of subcortical brain volumes derived from automated segmentation. *Hum Brain Mapp* 2010; **31**: 1751–1762.
- 19 Hibar DP, Stein JL, Renteria ME, Arias-Vasquez A, Desrivieres S, Jahanshad N *et al*. Common genetic variants influence human subcortical brain structures. *Nature* 2015; **520**: 224–229.
- 20 Strakowski SM, Adler CM, Almeida J, Altshuler LL, Blumberg HP, Chang KKD *et al*. The functional neuroanatomy of bipolar disorder: a consensus model. *Bipolar Disord* 2012; **14**: 313–325.
- 21 Nakagawa S, Cuthill IC. Effect size, confidence interval and statistical significance: a practical guide for biologists. (vol 82, pg 591, 2007). *Biol Rev Camb Philos Soc* 2009; **84**: 515.
- 22 Benjamini Y, Hochberg Y. Controlling the false discovery rate: a practical and powerful approach to multiple testing. *J R Stat Soc Series B Stat Methodol* 1995; **57**: 289–300.
- 23 Rimol LM, Hartberg CB, Nesvag R, Fennema-Notestine C, Hagler DJ, Pung CJ *et al*. Cortical thickness and subcortical volumes in schizophrenia and bipolar disorder. *Biol Psychiatry* 2010; **68**: 41–50.
- 24 Fears SC, Service SK, Kremeyer B, Araya C, Araya X, Bejarano J *et al*. Multisystem component phenotypes of bipolar disorder for genetic investigations of extended pedigrees. *JAMA Psychiatry* 2014; **71**: 375–387.
- 25 Altshuler LL, Bartzokis G, Grieder T, Curran J, Jimenez T, Leight K *et al*. An MRI study of temporal lobe structures in men with bipolar disorder or schizophrenia. *Biol Psychiatry* 2000; **48**: 147–162.
- 26 Chang K, Karchemskiy A, Barnea-Goraly N, Garrett A, Simeonova DI, Reiss A. Reduced amygdalar gray matter volume in familial pediatric bipolar disorder. *J Am Acad Child Adolesc Psychiatry* 2005; **44**: 565–573.
- 27 Pfeifer JC, Welge J, Strakowski SM, Adler CM, DelBello MP. Meta-analysis of amygdala volumes in children and adolescents with bipolar disorder. *J Am Acad Child Adolesc Psychiatry* 2008; **47**: 1289–1298.
- 28 Bitter SM, Mills NP, Adler CM, Strakowski SM, DelBello MP. Progression of amygdala volumetric abnormalities in adolescents after their first manic episode. *J Am Acad Child Adolesc Psychiatry* 2011; **50**: 1017–1026.
- 29 Lim CS, Baldessarini RJ, Vieta E, Yucel M, Bora E, Sim K. Longitudinal neuroimaging and neuropsychological changes in bipolar disorder patients: review of the evidence. *Neurosci Biobehav Rev* 2013; **37**: 418–435.
- 30 Duffy A, Horrocks J, Doucette S, Keown-Stoneman C, McCloskey S, Grof P. The developmental trajectory of bipolar disorder. *Br J Psychiatry* 2014; **204**: 122–128.
- 31 van Erp TGM, Hibar DP, Rasmussen JM, Glahn DC, Pearlson GD, Andreassen OA *et al*. Subcortical brain volume abnormalities in 2,028 patients with schizophrenia and 2,540 healthy controls via the ENIGMA consortium. *Mol Psychiatry* 2015. doi:10.1038/mp.2015.63.
- 32 Sapolsky RM. Glucocorticoids and hippocampal atrophy in neuropsychiatric disorders. *Arch Gen Psychiatry* 2000; **57**: 925–935.
- 33 Webster MJ, Knable MB, O'Grady J, Orthmann J, Weickert CS. Regional specificity of brain glucocorticoid receptor mRNA alterations in subjects with schizophrenia and mood disorders. *Mol Psychiatry* 2002; **7**: 924.
- 34 Poulton R, Caspi A, Moffitt TE, Cannon M, Murray R, Harrington H. Children's self-reported psychotic symptoms and adult schizophreniform disorder - A 15-year longitudinal study. *Arch Gen Psychiatry* 2000; **57**: 1053–1058.
- 35 Reichenberg A, Caspi A, Harrington H, Houts R, Keefe RSE, Murray RM *et al*. Static and dynamic cognitive deficits in childhood preceding adult schizophrenia: a 30-year study. *Am J Psychiatry* 2010; **167**: 160–169.
- 36 Schmaal L, Veltman DJ, van Erp TGM, Sämann PG, Frodl T, Jahanshad N *et al*. Subcortical brain alterations in major depressive disorder: findings from the ENIGMA Major Depressive Disorder working group. *Mol Psychiatry* 2015. doi:10.1038/mp.2015.69.
- 37 Tesli M, Espeseth T, Bettella F, Mattingsdal M, Aas M, Melle I *et al*. Polygenic risk score and the psychosis continuum model. *Acta Psychiatrica Scand* 2014; **130**: 311–317.
- 38 Yucel K, McKinnon MC, Taylor VH, Macdonald K, Alda M, Young LT *et al*. Bilateral hippocampal volume increases after long-term lithium treatment in patients with bipolar disorder: a longitudinal MRI study. *Psychopharmacology* 2007; **195**: 357–367.
- 39 Lyoo IK, Dager SR, Kim JE, Yoon SJ, Friedman SD, Dunner DL *et al*. Lithium-induced gray matter volume increase as a neural correlate of treatment response in bipolar disorder: a longitudinal brain imaging study. *Neuropsychopharmacology* 2010; **35**: 1743–1750.
- 40 Cadotte DW, Xu B, Racine RJ, MacQueen GM, Wang JF, McEwen B *et al*. Chronic lithium treatment inhibits pilocarpine-induced Mossy fiber sprouting in rat hippocampus. *Neuropsychopharmacology* 2003; **28**: 1448–1453.
- 41 Bachmann RF, Schloesser RJ, Gould TD, Manji HK. Mood stabilizers target cellular plasticity and resilience cascades - Implications for the development of novel therapeutics. *Mol Neurobiol* 2005; **32**: 173–202.
- 42 Frey BN, Andreazza AC, Cereser KMM, Martins MR, Valvassori SS, Reus GZ *et al*. Effects of mood stabilizers on hippocampus BDNF levels in an animal model of mania. *Life Sci* 2006; **79**: 281–286.
- 43 Hajek T, Bauer M, Simhandl C, Rybakowski J, O'Donovan C, Pfennig A *et al*. Neuroprotective effect of lithium on hippocampal volumes in bipolar disorder independent of long-term treatment response. *Psychol Med* 2014; **44**: 507–517.
- 44 Hajek T, Cullis J, Novak T, Kopecek M, Hoschl C, Blagdon R *et al*. Hippocampal volumes in bipolar disorders: opposing effects of illness burden and lithium treatment. *Bipolar Disord* 2012; **14**: 261–270.
- 45 Phillips ML, Travis MJ, Fagioli A, Kupfer DJ. Medication effects in neuroimaging studies of bipolar disorder. *Am J Psychiatry* 2008; **165**: 313–320.
- 46 Jernigan TL, Butters N, Ditraglia G, Schafer K, Smith T, Riwin M *et al*. Reduced cerebral gray-matter observed in alcoholics using magnetic-resonance-imaging. *Alcohol Clin Exp Res* 1991; **15**: 418–427.
- 47 Ledoux JE. Emotion - clues from the Brain. *Annu Rev Psychol* 1995; **46**: 209–235.
- 48 Phillips M, Ladouceur C, Drevets W. A neural model of voluntary and automatic emotion regulation: implications for understanding the pathophysiology and neurodevelopment of bipolar disorder. *Mol Psychiatry* 2008; **13**: 833–857.
- 49 Chen CH, Lennox B, Jacob R, Calder A, Lupson V, Bisbrown-Chippendale R *et al*. Explicit and implicit facial affect recognition in manic and depressed states of bipolar disorder: A functional magnetic resonance imaging study. *Biol Psychiatry* 2006; **59**: 31–39.
- 50 Torrey EF, Barci BM, Webster MJ, Bartko JJ, Meador-Woodruff JH, Knable MB. Neurochemical markers for schizophrenia, bipolar disorder, and major depression in postmortem brains. *Biol Psychiatry* 2005; **57**: 252–260.
- 51 Gould TD, Quiroz JA, Singh J, Zarate CA, Manji HK. Emerging experimental therapeutics for bipolar disorder: insights from the molecular and cellular actions of current mood stabilizers. *Mol Psychiatry* 2004; **9**: 734–755.



This work is licensed under a Creative Commons Attribution-NonCommercial-NoDerivs 4.0 International License. The images or other third party material in this article are included in the article's Creative Commons license, unless indicated otherwise in the credit line; if the material is not included under the Creative Commons license, users will need to obtain permission from the license holder to reproduce the material. To view a copy of this license, visit <http://creativecommons.org/licenses/by-nc-nd/4.0/>