



City Research Online

City, University of London Institutional Repository

Citation: Boon, A. (2016). Understanding lawyer default in England and Wales: An analysis of insurance and complaints data. *International Journal of the Legal Profession*, doi: 10.1080/09695958.2016.1227261

This is the supplemental version of the paper.

This version of the publication may differ from the final published version.

Permanent repository link: <https://openaccess.city.ac.uk/id/eprint/15202/>

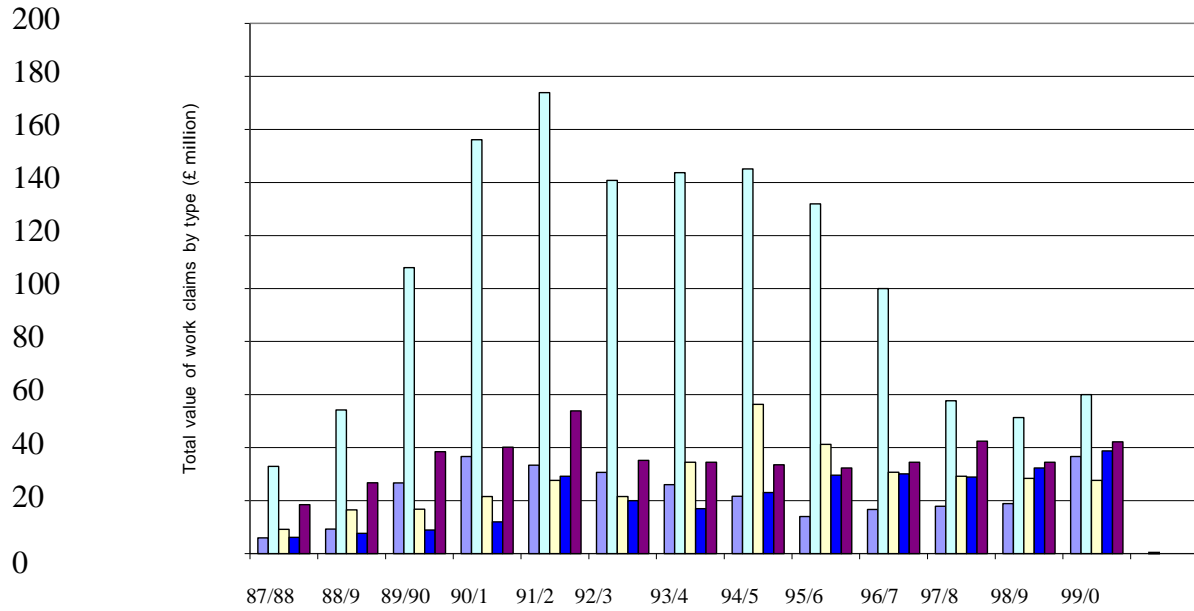
Link to published version: <http://dx.doi.org/10.1080/09695958.2016.1227261>

Copyright: City Research Online aims to make research outputs of City, University of London available to a wider audience. Copyright and Moral Rights remain with the author(s) and/or copyright holders. URLs from City Research Online may be freely distributed and linked to.

Reuse: Copies of full items can be used for personal research or study, educational, or not-for-profit purposes without prior permission or charge. Provided that the authors, title and full bibliographic details are credited, a hyperlink and/or URL is given for the original metadata page and the content is not changed in any way.

Figure 1: Value of claims on SIF by categories of work (1987-2000)¹

Key: Commercial – conveyancing – Personal injury – Other litigation – Other



¹ Based on SIF data, taken from Malcolm, Wilsdon and Xie above, at p. 38.