



City Research Online

City St George's, University of London

Citation: Lawrenson, J., Gill, S., Masuid, I. & Rashid, F. (2023). Repeatability and agreement of central corneal thickness measurements with a new handheld non-contact pachymeter. *Ophthalmic and Physiological Optics*, 43(6), pp. 1524-1530. doi: 10.1111/opo.13199

This is the published version of the paper.

This version of the publication may differ from the final published version. To cite this item please consult the publisher's version.

Permanent repository link: <https://openaccess.city.ac.uk/id/eprint/30930/>

Link to published version: <https://doi.org/10.1111/opo.13199>

Copyright and Reuse: Copyright and Moral Rights remain with the author(s) and/or copyright holders. Copies of full items can be used for personal research or study, educational, or not-for-profit purposes without prior permission or charge, unless otherwise indicated, provided that the authors, title and full bibliographic details are credited, a hyperlink and/or URL is given for the original metadata page and the content is not changed in any way. For full details of reuse please refer to [City Research Online policy](#).

Repeatability and agreement of central corneal thickness measurements with a new handheld non-contact pachymeter

John G. Lawrenson¹  | Simranjit Gill² | Isra Masuid^{2,3} | Fardip Rashid²

¹Centre for Applied Vision Research, School of Health and Psychological Sciences, City, University of London, London, UK

²Moorfields Eye Hospital, NHS Foundation Trust, London, UK

³Royal Berkshire, NHS Foundation Trust, Reading, UK

Correspondence

John G. Lawrenson, Centre for Applied Vision Research, School of Health and Psychological Sciences, City, University of London, London, UK.

Email: j.g.lawrenson@city.ac.uk

Funding information

Occuity Ltd

Abstract

Purpose: To compare the repeatability of central corneal thickness (CCT) measurements taken with a new handheld pachymeter (Occuity PM1 pachymeter) and to assess its agreement with ultrasound biometry and two commercially available optical biometers in participants with normal eyes.

Methods: Three consecutive CCT measurements of the right eye of 105 participants with normal corneas were acquired by the PM1 pachymeter, Lenstar LS 900 and Oculus Pentacam HR in a random order. This was followed by three measurements with a handheld ultrasound pachymeter (UP) (Pachmate 2). Repeatability and the repeatability limit were calculated for each device and Bland–Altman limits of agreement (LoA) were determined for the PM1 pachymeter compared to the other devices.

Results: The mean CCT (\pm SD) was 551.04 ± 33.43 , 558.62 ± 31.46 , 549.41 ± 31.00 and $539.73 \pm 29.50 \mu\text{m}$ for the PM1 pachymeter, UP, Lenstar and Pentacam, respectively. The repeatability limits (expressed as the within subject SD for repeat measurements) were 14.02, 13.68, 4.99 and $9.90 \mu\text{m}$, respectively. The closest agreement was between the PM1 and Lenstar (mean difference = $-1.63 \mu\text{m}$ with LoA $10.72 \mu\text{m}$ below and $13.97 \mu\text{m}$ above the readings obtained with the Lenstar). The PM1 underestimated CCT compared to UP (mean difference = $7.58 \mu\text{m}$, LoA $24.63 \mu\text{m}$ below and $9.47 \mu\text{m}$ above UP). The agreement was lowest between the PM1 and Pentacam (mean difference = $-11.30 \mu\text{m}$, LoA between 4.29 and $26.89 \mu\text{m}$).

Conclusions: The PM1 pachymeter shows excellent precision for CCT measurements across a range of corneal thicknesses in normal eyes and provides a safe and easy-to-use alternative to ultrasound pachymetry.

KEYWORDS

agreement, central corneal thickness, pachymetry, precision

INTRODUCTION

Assessment of CCT is a key measurement for many aspects of clinical practice. It is widely accepted that intraocular pressure (IOP) readings are overestimated in eyes with a thicker cornea and underestimated with a thinner cornea.¹ CCT also provides valuable information on risk profiling patients with ocular hypertension

(OHT) and suspected glaucoma,² since a thinner CCT is associated with a greater risk of conversion of OHT to glaucoma and increased risk of glaucoma progression.³ Evaluation of CCT is also useful in the diagnosis and monitoring of corneal dystrophies⁴ and prior to refractive surgery, to ensure that the thickness of the residual corneal bed after surgery is sufficient to minimise the risk of post-operative corneal ectasia.⁵ Despite its clinical

This is an open access article under the terms of the [Creative Commons Attribution](https://creativecommons.org/licenses/by/4.0/) License, which permits use, distribution and reproduction in any medium, provided the original work is properly cited.

© 2023 The Authors. *Ophthalmic and Physiological Optics* published by John Wiley & Sons Ltd on behalf of College of Optometrists.

importance, there is evidence that corneal pachymeters are not widely available to community optometrists^{6,7} and that many optometrists lack confidence in performing and interpreting pachymetry results.⁸

A-mode ultrasound (A-scan) biometry has historically been the reference standard for measurement of CCT in routine ophthalmic practice. The method relies on the transit time of the ultrasound pulse from the transducer to the posterior corneal surface and back again.¹ Modern handheld ultrasound pachymeters are light, portable, quick to use and relatively inexpensive. As a result, these contact devices are the instrument of choice in busy ophthalmology clinics.⁹

A number of non-contact optical biometers are commercially available that integrate corneal topography with repeatable and accurate measurements of CCT and a range of ocular biometry measurements for intraocular lens power calculations and to aid myopia management.¹⁰ However, these sophisticated instruments are expensive and lack portability.

The Occuity PM1 pachymeter is a new handheld non-contact pachymeter that uses confocal scanning technology. The principle of measurement is that a tightly focussed beam of laser light is directed into the eye and the focal point scanned across the cornea. Whenever the focal point meets a surface, the anterior and posterior corneal surfaces in this case, a bright reflection is seen on the confocal receiver. By measuring the separation between the reflections within the scan, the corneal thickness is determined with an axial resolution of 1 µm, via an empirical correction factor to account for the refractive index of the cornea.

The aim of this study was to compare the repeatability of measurements taken with the PM1 pachymeter and to assess the level of agreement with ultrasound pachymetry (UP) and two commercially available optical biometers in participants with normal eyes.

METHODS

One hundred and five right eyes of 105 adult participants aged 18 years and over were prospectively enrolled into the study. Exclusion criteria included existing or previous ocular surface pathology, history of ocular surgery (including refractive surgery) and an inability to fixate on a target, for example, in strabismus. Participants with refractive error or latent strabismus were not excluded; however, contact lens wearers were instructed not to wear their lenses on the day of testing. The study received ethical approval from the City, University of London School of Health and Psychological Sciences Research and Ethics Committee (REC reference: ETH2021-1765) and was conducted in accordance with the Declaration of Helsinki. In compliance with UK medical device regulations, the clinical investigation also received a letter of 'no objection' from the Medicines and Healthcare products Regulatory Agency (reference: CI/2022/0063/GB).

Key points

- Central corneal thickness (CCT) is an important clinical measurement in the diagnosis and management of glaucoma and certain corneal dystrophies; it also provides useful information prior to refractive surgery.
- The Occuity PM1 pachymeter is a new handheld non-contact pachymeter that uses confocal technology to measure CCT. The device showed excellent precision for CCT measurements across a range of corneal thicknesses in normal eyes.
- The PM1 pachymeter provides a safe and easy-to-use alternative to ultrasound pachymetry that could facilitate an increased uptake of pachymetry in routine optometric practice.

All participants provided written informed consent before taking part. A payment of £30 was provided as a compensation for participation.

Three consecutive CCT measurements were taken from the right eye of each subject using three optical (non-contact) biometers (PM1 pachymeter, [Occuity.com](https://www.occuity.com); Lenstar LS 900, [Haag-streit.com](https://www.haag-streit.com) and Pentacam HR, [Pentacam.com](https://www.pentacam.com)). The order of testing with these instruments was randomised. This was followed by three measurements taken with a handheld UP. Ultrasound pachymetry (Pachmate 2, [dgtechnology.com](https://www.dgtechnology.com)) was performed last due to the potential effect of topical anaesthesia on the CCT.

PM1 pachymeter

To take a measurement with the PM1 pachymeter ([Figure 1](#)), the operator touches the screen to put the pachymeter into scanning mode and holds the device up



FIGURE 1 Display of the PM1 pachymeter.

to the patient's eye. The PM1 uses an off-axis camera with a fiducial marker superimposed on the camera image to ensure that the measurement is taken at the corneal centre. Once aligned, the pachymeter automatically begins measuring, capturing approximately 200 scans per second, and then displays the average of these measurements. The PM1 can record for up to 10 s at 200 Hz; however, if the user collects a sufficient amount of data then the recording is stopped, which typically requires 2–5 s of scanning.

Lenstar LS 900

The Lenstar uses the principle of optical low-coherence interferometry and an 820-nm superluminescent diode to measure several eye thickness and length measurements.¹¹ Participants were seated with their heads stabilised using a chin rest and brow bar, and were asked to fixate on the internal red fixation light while the measurements were taken. The instrument was aligned using the image of the eye on the computer monitor. Five measurements were taken as recommended by the manufacturer to calculate the mean CCT.

Oculus Pentacam HR

The Pentacam utilises a rotating Scheimpflug camera, which captures images of a 475-nm monochromatic slit of light that illuminates the cornea. The 25-picture scan mode was used, consisting of 25 pictures per second.¹² Using data from these images, the system calculates a 3D model of the anterior segment. Images were captured with the participants seated and their head stabilised with a chin rest and brow bar. CCT was extracted from the 'pachymetry map', which reports thickness values at the corneal apex, the pupil centre and thinnest point. The CCT at the pupil centre was used in the current analysis.

Ultrasound biometry

Consecutive CCT measurements were then taken with a Pachmate 2 handheld UP.¹³ One drop of the topical anaesthetic, 0.5% proxymetacaine hydrochloride (Bausch & Lomb, bausch.co.uk), was instilled into the conjunctival sac to anaesthetise the cornea and the probe was positioned on the central cornea perpendicular to the corneal surface. With the device in 'continuous averaging mode', the pachymeter makes 25 measurements and provides the mean CCT value.

Measurements with all biometers were taken within a short time of each other during the period from 10:00 to 17:00 h by experienced examiners, who were masked to the other test results. Total test time was 30–40 min.

Statistical analysis

Statistical analyses were performed with MedCalc for Windows, version 19.4 (MedCalc Software, medcalc.org) using methods that conformed to established guidance on conducting agreement and precision studies. It is recommended that sample sizes for agreement studies should be at least 100 participants, based on the accuracy of estimates of the LoA.^{14,15} For a study comparing optical methods for measuring CCT, a sample size of 100 would provide a confidence interval for the LoA of 1.5 μm .¹⁴ Descriptive statistics were calculated as the mean CCT and standard deviation (SD) for each device.

Repeatability was defined as the variability in repeated measurements with each instrument when other factors are assumed to be constant (examiner, calibration and time between measurements). To evaluate repeatability, a repeated measures analysis of variance (ANOVA) was performed to determine the within-subject SD (S_r). The 95% confidence interval (CI) around S_r represents the repeatability limit (r), within which 95% of the measurements lie (calculated as $1.96 \sqrt{2} \times S_r$).

To assess agreement between devices, the Bland–Altman LoA method, which plots the differences in the measurement between two devices against their mean, was used. Agreement was summarised by the bias, that is, the mean difference and SD of the differences. The LoA were defined as the mean difference plus and minus 1.96 times the SD of the differences.

RESULTS

The right eye of 105 participants—49 (46.7%) female, with a mean age of 41.3 ± 14.5 years (range 19–74 years) and ethnicity: 82.9% white, 9.5% Asian, 2.9% black and 4.8% other—was measured with each biometer.

The mean, SD, repeatability (S_r) and repeatability limit (r) of the PM1, Lenstar, Pentacam and UP for the measurement of CCT are shown in Table 1. The repeatability of the PM1 was approximately five microns, and similar to the UP with comparable repeatability limits of approximately 14 μm (the likely limits within which 95% of measurements should occur). Repeatability with the Lenstar and Pentacam was better than both handheld devices (approximately 2 μm).

TABLE 1 The mean, SD, repeatability (S_r) and repeatability limit (r) of CCT for each biometer.

Device	Mean CCT \pm SD, μm	Repeatability (S_r)	Repeatability limit (r)
PM1	551.04 \pm 33.43	5.06	14.02
UP	558.62 \pm 31.46	4.94	13.68
Lenstar	549.41 \pm 31.00	1.80	4.99
Pentacam	539.73 \pm 29.50	2.13	9.90

Abbreviations: CCT, central corneal thickness; SD, standard deviation; UP, ultrasound pachymetry.

TABLE 2 The mean difference, SD, *p* value, LoA with 95% CIs between the PM1 and the other three biometers.

Comparison	Mean difference in CCT (95% CI)	<i>p</i> Value	Lower 95% LoA (95% CI)	Upper 95% LoA (95% CI)
UP vs. PM1	7.58 (5.90 to 9.27)	<0.0001	-9.47 (-12.35 to -6.58)	24.63 (21.75 to 27.52)
Lenstar vs. PM1	-1.63 (-2.85 to -0.41)	0.009	-13.97 (-16.06 to -11.88)	10.72 (8.63 to 12.80)
Pentacam vs. PM1	-11.30 (-12.84 to -9.76)	<0.001	-26.89 (-29.53 to -24.25)	4.29 (1.65 to 6.93)

Abbreviations: CI, confidence interval; LoA, limits of agreement; UP, ultrasound pachymetry.

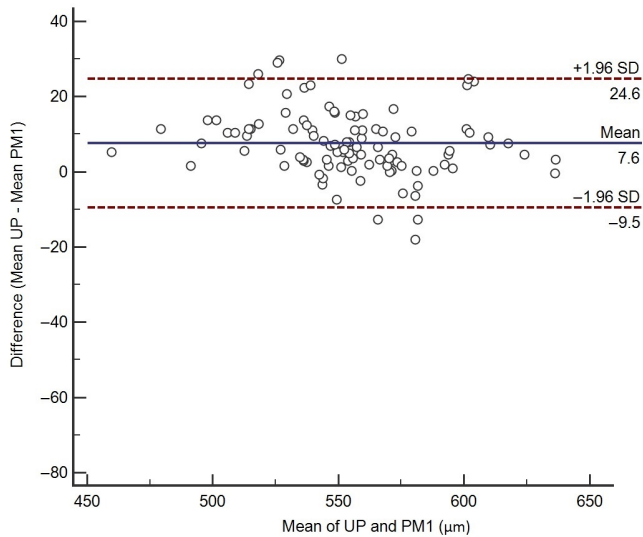


FIGURE 2 Bland–Altman plot showing the agreement between ultrasound pachymetry (UP) and the PM1 for corneal central thickness measurements. The solid line indicates the mean difference (bias) and the dotted lines indicate the 95% limits of agreement.

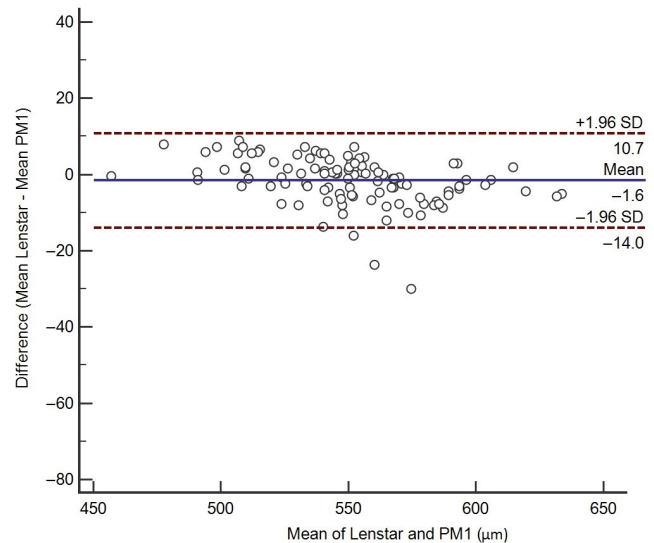


FIGURE 3 Bland–Altman plot showing the agreement between the Lenstar and the PM1 for central corneal thickness measurements. The solid line indicates the mean difference (bias) and the dotted lines indicate the 95% limits of agreement.

The Lenstar showed the narrowest repeatability limit (approximately 5 µm).

In terms of agreement, Table 2 shows the mean difference, SD and 95% LoA (with 95% CIs) for comparisons between the PM1, UP, Lenstar and Pentacam. All mean differences were statistically significant. The closest agreement was between the PM1 and Lenstar, with a mean difference of -1.63 µm and relatively narrow LoAs with the PM1 giving readings up to 10.72 µm below and 13.97 µm above the readings obtained with the Lenstar. Overall, the PM1 underestimated the CCT compared to UP; mean difference 7.58 µm, with LoA up to 24.63 µm below and 9.47 µm above the UP. The agreement was lowest between the PM1 and Pentacam (mean difference = -11.30 µm, LoA between 4.29 and 26.89 µm). Figures 2–4 show the Bland–Altman plots for the three pairwise comparisons.

To illustrate the comparative agreement between devices, we plotted the difference between the overall mean CCT for all devices and the mean for each specific device against the overall mean (Figure 5). The optical devices generally showing thinner CCT measurements compared with ultrasound pachymetry. Overall, the PM1 showed good agreement across the range of CCT measurements.

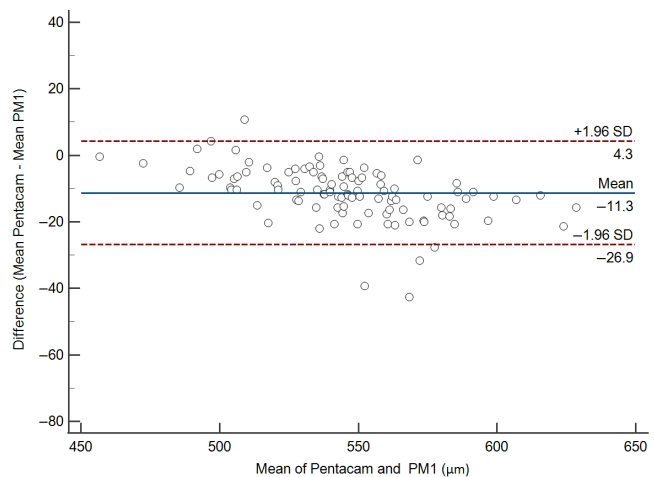


FIGURE 4 Bland–Altman plot showing the agreement between the Pentacam and the PM1 for central corneal thickness measurements. The solid line indicates the mean difference (bias) and the dotted lines indicate the 95% limits of agreement.

DISCUSSION

Technological advances are transforming eye care. The influx of new instrumentation to measure various ocular

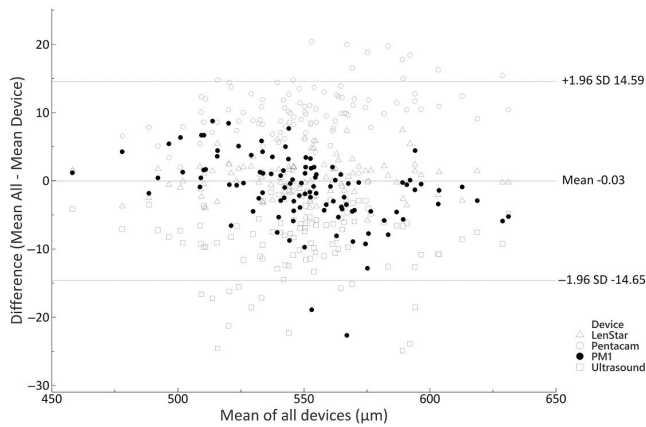


FIGURE 5 Bland–Altman plot showing the agreement between the mean measurement for each device against the mean central corneal thickness for all devices. The solid line indicates the mean difference (bias) and the dotted lines indicate the 95% limits of agreement. Measurements for the PM1 are highlighted.

biometric parameters has driven research into the validity of these measurements.¹⁰ Questions that are important to the clinician include the accuracy of the measurements, which is usually defined by repeatability and reproducibility,¹⁵ and how the measurements with the new instrument compare to the ‘gold standard’, to determine whether readings from different devices can be used interchangeably.¹⁴

The current study investigated the repeatability of a new optical pachymeter (Occuity PM1 pachymeter) and compared its agreement with other commercially available devices in normal eyes. UP is generally considered to be the reference standard for CCT measurements. Although findings with UP have been shown to provide excellent inter- and intra-observer agreement,^{16–18} there are a number of drawbacks to this method. The contact of the biometer probe with the cornea requires topical anaesthesia, which causes discomfort, and in some individuals may affect corneal thickness (due to corneal epithelial oedema).^{19,20} Furthermore, contact with the cornea increases the risk of cross-contamination and the accuracy of the measurement may depend on the experience of the user, as the probe needs to be aligned perpendicularly to the centre of the cornea.

We found a high level of repeatability for the PM1 pachymeter. The within-subject SD (repeatability) of three consecutive readings was approximately 5 µm, with a repeatability limit (range containing 95% of the measurements) of approximately 14 µm. This was similar to the repeatability of the UP. As expected, the Lenstar and Pentacam showed a higher degree of precision, with repeatability limits of approximately 5 and 10 µm, respectively, confirming the results of earlier studies.^{21–23}

The pairwise comparisons showed that measurements obtained with the PM1 pachymeter were slightly lower than UP, with a mean difference of 7.58 µm over a wide range of CCTs. Previous studies have similarly found that CCT measurements with ultrasound are slightly thicker than with optical biometers.^{13,24–26} Although statistically significant,

the small overall difference in CCT between the PM1 and UP is not clinically significant; however, the 95% LoA ranging from 9.47 µm above to 24.63 µm below would suggest that the two devices are not directly interchangeable and therefore the same device should be used when monitoring CCT over time. Similar results have also been found in agreement studies using optical coherence tomography (OCT), which is currently widely used for quantitative and qualitative evaluation of anterior segment structures in a variety of clinical settings.^{27,28} Comparisons of OCT with UP have reported differences in mean CCT of up to 26 µm with LoA > 30 µm.^{24,29,30}

There was closer agreement between the PM1 and Lenstar, with a mean difference of only 1.63 µm and narrower LoA (13.97 µm above to 10.72 µm below the Lenstar). Measurements with these devices could be considered to be clinically interchangeable. By contrast, the PM1 generally showed higher CCT measurements (mean difference 11.3 µm) than those taken from the 25-picture scan with the Pentacam at the pupil centre. There was also greater variability (LoA, 26.89 µm above to 4.29 µm below). Previous studies comparing the Pentacam with other optical biometers have reported similar levels of agreement.^{22,23,30}

One of the main advantages of non-contact pachymeters is the reduced risk of cross-infection. Contact pachymetry has been identified as a possible infection risk as the majority of devices use non-disposable probes that require disinfection after use. A recent survey of pachymeter use and disinfection practice in UK ophthalmology units⁹ identified significant variability in disinfection methods, with only a few units following current professional guidance.^{31,32} The majority (66%) reported that they cleaned the pachymeter probe with an alcohol wipe between patients. Alcohol wipes are not 100% effective due to their inability to deactivate bacterial spores and 70% alcohol is ineffective against adenovirus and coronavirus.³³

There are a few limitations to the current study. All participants had normal eyes and the performance of the PM1 pachymeter in eyes with ocular pathology or post LASIK was not assessed. Furthermore, all measurements were taken by the same group of experienced examiners and the results may not be generalisable to less experienced operators. This is particularly the case with UP, as all examiners were optometrists with a specialist qualification in glaucoma who were routinely performing this technique in their clinical practice.

In conclusion, the current study has demonstrated that the Occuity PM1 pachymeter shows excellent repeatability for CCT measurements in normal eyes. Although the measurements with the pachymeter closely agree with those obtained by ultrasound, as with earlier studies comparing other optical biometers to ultrasound, the measurements are not directly interchangeable, since the LoA include clinically important differences. To the best of our knowledge, the PM1 is the first available handheld non-contact pachymeter. With minimal training, the instrument is easy

to use and the touch screen interface guides the operator to ensure correct alignment. As a result, the PM1 could be used by non-clinical staff and provides an opportunity for the measurement of CCT to become more firmly embedded in routine eye care.

AUTHOR CONTRIBUTIONS

John G. Lawrenson: Conceptualization (equal); formal analysis (equal); investigation (equal); methodology (equal); writing – original draft (equal). **Simranjit Gill:** Conceptualization (equal); investigation (equal); methodology (equal); writing – review and editing (equal). **Isra Masuid:** Conceptualization (equal); investigation (equal); methodology (equal); writing – review and editing (equal). **Fardip Rashid:** Conceptualization (equal); investigation (equal); methodology (equal); writing – review and editing (equal).

FUNDING INFORMATION

The work was supported by Occuity Ltd.

CONFLICT OF INTEREST STATEMENT

The authors have no proprietary interest in any of the materials mentioned in this article.

DATA AVAILABILITY STATEMENT

Data available on request.

PATIENT CONSENT

Written informed consent was obtained from all participants.

ORCID

John G. Lawrenson  <https://orcid.org/0000-0002-2031-6390>

REFERENCES

- Ehlers N, Hjortdal J. Corneal thickness: measurement and implications. *Exp Eye Res*. 2004;78:543–8.
- Behki R, Damji KF, Crichton A. Canadian perspectives in glaucoma management: the role of central corneal thickness. *Can J Ophthalmol*. 2007;42:66–74.
- European Glaucoma Society. Terminology and guidelines for glaucoma, 5th ed. 2020. Available from: <https://www.eugs.org/eng/guidelines.asp>. Accessed 13 Apr 2023.
- Kopplin LJ, Przepyszny K, Schmotzer B, Rudo K, Babineau DC, Patel SV, et al. Relationship of Fuchs endothelial corneal dystrophy severity to central corneal thickness. *Arch Ophthalmol*. 2012;130:433–9.
- Price FW Jr, Koller DL, Price MO. Central corneal pachymetry in patients undergoing laser in situ keratomileusis. *Ophthalmology*. 1999;106:2216–20.
- Myint J, Edgar DF, Kotecha A, Murdoch IE, Lawrenson JG. A national survey of diagnostic tests reported by UK community optometrists for the detection of chronic open angle glaucoma. *Ophthalmic Physiol Opt*. 2011;31:353–9.
- Dabasia PL, Edgar DF, Garway-Heath DF, Lawrenson JG. A survey of current and anticipated use of standard and specialist equipment by UK optometrists. *Ophthalmic Physiol Opt*. 2014;34:592–613.
- Goudie C, Pronin S, Court H, Pooley J, Tatham AJ. A national survey of the use of pachymeters by optometrists in Scotland: experience, views and barriers to use. *Ophthalmic Physiol Opt*. 2017;37:177–83.
- Jasani KM, Barua A, Putri C, Mercieca K, Sattar N, Sanghrajka A, et al. Pachymeter use and disinfection practice in the United Kingdom: a national survey. *J Glaucoma*. 2020;29:694–7.
- Yu J, Wen D, Zhao J, Wang Y, Feng K, Wan T, et al. Comprehensive comparisons of ocular biometry: a network-based big data analysis. *Eye Vis*. 2022;10:1. <https://doi.org/10.1186/s40662-022-00320-3>
- Cruysberg LP, Doors M, Verbakel F, Berendschot TT, De Brabander J, Nuijts RM. Evaluation of the Lenstar LS 900 non-contact biometer. *Br J Ophthalmol*. 2010;94:106–10.
- McAlinden C, Khadka J, Pesudovs K. A comprehensive evaluation of the precision (repeatability and reproducibility) of the Oculus Pentacam HR. *Invest Ophthalmol Vis Sci*. 2011;52:7731–7.
- Soulantzou K, Plakitsi A, Chalkiadaki E, Anastasopoulou M, Karmiris E. Comparison of central corneal thickness in healthy eyes using ultrasound pachymetry, non-contact specular microscopy and a high-resolution Scheimpflug camera. *Int Ophthalmol*. 2023;43:363–70.
- McAlinden C, Khadka J, Pesudovs K. Statistical methods for conducting agreement (comparison of clinical tests) and precision (repeatability or reproducibility) studies in optometry and ophthalmology. *Ophthalmic Physiol Opt*. 2011;31:330–8.
- McAlinden C, Khadka J, Pesudovs K. Precision (repeatability and reproducibility) studies and sample-size calculation. *J Cataract Refract Surg*. 2015;41:2598–604.
- Gunvant P, Broadway DC, Watkins RJ. Repeatability and reproducibility of the BVI ultrasonic Pachymeter. *Eye*. 2003;17:825–8.
- Miglior S, Albe E, Guareschi M, Mandelli G, Gomasasca S, Orzalesi N. Intraobserver and interobserver reproducibility in the evaluation of ultrasonic pachymetry measurements of central corneal thickness. *Br J Ophthalmol*. 2004;88:174–7.
- Peyman M, Tai LY, Khaw KW, Ng CM, Win MM, Subrayan V. Accutome PachPen handheld ultrasonic pachymeter: intraobserver repeatability and interobserver reproducibility by personnel of different training grades. *Int Ophthalmol*. 2015;35:651–5.
- Asensio I, Rahhal SM, Alonso L, Palanca-Sanfrancisco JM, Sanchis-Gimeno JA. Corneal thickness values before and after oxybuprocaine 0.4% eye drops. *Cornea*. 2003;22:527–32.
- Perez-Bermejo M, Cervino A, Calvo-Maroto AM, Moscardo M, Murillo-Llorente M, Sanchis-Gimeno JA. Corneal thickness response after anesthetic eye drops: our own results and meta-analysis. *Biomed Res Int*. 2018;2018:4743721. <https://doi.org/10.1155/2018/4743721>
- Zhao J, Chen Z, Zhou Z, Ding L, Zhou X. Evaluation of the repeatability of the Lenstar and comparison with two other non-contact biometric devices in myopes. *Clin Exp Optom*. 2013;96:92–9.
- Huang J, Pesudovs K, Yu A, Wright T, Wen D, Li M, et al. A comprehensive comparison of central corneal thickness measurement. *Optom Vis Sci*. 2011;88:940–9.
- Chen S, Huang J, Wen D, Chen W, Huang D, Wang Q. Measurement of central corneal thickness by high-resolution Scheimpflug imaging, Fourier-domain optical coherence tomography and ultrasound pachymetry. *Acta Ophthalmol*. 2012;90:449–55.
- Dogan M, Ertan E. Comparison of central corneal thickness measurements with standard ultrasonic pachymetry and optical devices. *Clin Exp Optom*. 2019;102:126–30.
- Gokcinar NB, Yumusak E, Ornek N, Yorubulut S, Onaran Z. Agreement and repeatability of central corneal thickness measurements by four different optical devices and an ultrasound pachymeter. *Int Ophthalmol*. 2019;39:1589–98.
- Mayali H, Altinisk M, Diri I, Ilker S, Kurt E, Kayikcioglu O. Comparison of central corneal thickness measurements by contact and non-contact pachymetry devices. *J Curr Glaucoma Pract*. 2021;15:28–31.
- Li H, Jhanji V, Dorairaj S, Liu A, Lam DS, Leung CK. Anterior segment optical coherence tomography and its clinical applications in glaucoma. *J Curr Glaucoma Pract*. 2012;6:68–74.
- Shan J, DeBoer C, Xu BY. Anterior segment optical coherence tomography: applications for clinical care and scientific research. *Asia Pac J Ophthalmol*. 2019;8:146–57.

29. Kim HY, Budenz DL, Lee PS, Feuer WJ, Barton K. Comparison of central corneal thickness using anterior segment optical coherence tomography vs ultrasound pachymetry. *Am J Ophthalmol*. 2008;145:228–32.
30. Biswas S, Biswas P. Agreement and repeatability of corneal thickness and radius among three different corneal measurement devices. *Optom Vis Sci*. 2021;98:1196–202.
31. Royal College of Ophthalmologists. Ophthalmic instrument decontamination. Available from: <https://www.rcophth.ac.uk/resources-listing/ophthalmic-instrument-decontamination/>. Accessed 13 Apr 2023.
32. College of Optometrists. Guidance for professional practice. Infection control. Available from: <https://www.college-optometrists.org/clinical-guidance/guidance/safety-and-quality/infection-control>. Accessed 13 Apr 2023.
33. Junk AK, Chen PP, Lin SC, Nouri-Mahdavi K, Radhakrishnan S, Singh K, et al. Disinfection of tonometers: a report by the American Academy of Ophthalmology. *Ophthalmology*. 2017;124:1867–75.

How to cite this article: Lawrenson JG, Gill S, Masuid I, Rashid F. Repeatability and agreement of central corneal thickness measurements with a new handheld non-contact pachymeter. *Ophthalmic Physiol Opt*. 2023;00:1–7. <https://doi.org/10.1111/opo.13199>