



City Research Online

City, University of London Institutional Repository

Citation: Doe, G., Clanchy, J., Wathall, S., Barber, S., Edwards, S. A., Evans, H., Jackson, D., Armstrong, N., Steiner, M. C. & Evans, R. A. (2025). Investigating a structured diagnostic approach for chronic breathlessness in primary care: a mixed-methods feasibility cluster randomised controlled trial. *BMJ Open Respiratory Research*, 12(1), doi: 10.1136/bmjresp-2024-002716

This is the published version of the paper.

This version of the publication may differ from the final published version.

Permanent repository link: <https://openaccess.city.ac.uk/id/eprint/34735/>

Link to published version: <https://doi.org/10.1136/bmjresp-2024-002716>

Copyright: City Research Online aims to make research outputs of City, University of London available to a wider audience. Copyright and Moral Rights remain with the author(s) and/or copyright holders. URLs from City Research Online may be freely distributed and linked to.

Reuse: Copies of full items can be used for personal research or study, educational, or not-for-profit purposes without prior permission or charge. Provided that the authors, title and full bibliographic details are credited, a hyperlink and/or URL is given for the original metadata page and the content is not changed in any way.

City Research Online:

<http://openaccess.city.ac.uk/>

publications@city.ac.uk

Investigating a structured diagnostic approach for chronic breathlessness in primary care: a mixed-methods feasibility cluster randomised controlled trial

Gillian Doe ,¹ Jill Clanchy,² Simon Wathall,³ Shaun Barber,² Sarah A Edwards,⁴ Helen Evans,⁴ Darren Jackson,⁵ Natalie Armstrong,⁶ Michael C Steiner ,^{1,4} Rachael A Evans ^{1,4}

To cite: Doe G, Clanchy J, Wathall S, *et al.* Investigating a structured diagnostic approach for chronic breathlessness in primary care: a mixed-methods feasibility cluster randomised controlled trial. *BMJ Open Respir Res* 2025;**12**:e002716. doi:10.1136/bmjresp-2024-002716

► Additional supplemental material is published online only. To view, please visit the journal online (<https://doi.org/10.1136/bmjresp-2024-002716>).

Received 19 September 2024
Accepted 7 January 2025



© Author(s) (or their employer(s)) 2025. Re-use permitted under CC BY. Published by BMJ Group.

For numbered affiliations see end of article.

Correspondence to
Prof Rachael A Evans;
re66@leicester.ac.uk

ABSTRACT

Background There is a need to reduce delays to diagnosis for chronic breathlessness to improve patient outcomes.

Objective To conduct a mixed-methods feasibility study of a larger cluster randomised controlled trial (cRCT) investigating a structured symptom-based diagnostic approach versus usual care for chronic breathlessness in primary care.

Methods 10 general practitioner practices were cluster randomised to a structured diagnostic approach for chronic breathlessness including early parallel investigations (intervention) or usual care. Adults over 40 years old at participating practices were eligible if presenting with chronic breathlessness without an existing explanatory diagnosis. The primary feasibility outcomes were participant recruitment and retention rate at 1 year. Secondary outcomes included number of investigations at 3 months, and investigations, diagnoses and patient-reported outcome measures (PROMs) at 1 year. Semistructured interviews were completed with patients and clinicians, and analysed using thematic analysis.

Results Recruitment rate was 32% (48/150): 65% female, mean (SD) age 66 (11) years, body mass index 31.2 kg/m² (6.5), median (IQR) Medical Research Council dyspnoea 2 (2–3). Retention rate was 85% (41/48). At 3 months, the intervention group had a median (IQR) of 8 (7–9) investigations compared with 5 (3–6) investigations with usual care. 11/25 (44%) patients in the intervention group had coded diagnosis for breathlessness at 12 months compared with 6/23 (26%) with usual care. Potential improvements in symptom burden and quality of life were observed in the intervention group above usual care.

Conclusions A cRCT investigating a symptom-based diagnostic approach for chronic breathlessness is feasible in primary care showing potential for timely investigations and diagnoses, with PROMs potentially indicating patient-level benefit. A further refined fully powered cRCT with health economic analysis is needed.

WHAT IS ALREADY KNOWN ON THIS TOPIC

⇒ There are delays to diagnosis lasting years for many patients with long-term conditions commonly presenting with breathlessness. A structured symptom-based diagnostic intervention for breathlessness with early parallel investigations may lead to earlier diagnosis and treatments to improve patient outcomes; however, the clinical- and cost-effectiveness of such an approach is unknown.

WHAT THIS STUDY ADDS

⇒ We demonstrated that a future cluster randomised controlled trial investigating a symptom-based structured diagnostic intervention for breathlessness is feasible. Our results show a symptom-based approach for breathlessness in primary care has the potential to reduce time to diagnosis, improve outcomes for patients and appears acceptable to patients and clinicians.

HOW THIS STUDY MIGHT AFFECT RESEARCH, PRACTICE OR POLICY

⇒ Our feasibility results overall support a fully powered multicentre randomised trial to formally assess clinical- and cost-effectiveness of a structured diagnostic breathlessness pathway. If successful, this approach can be implemented into clinical practice with policy recommendations.

INTRODUCTION

Breathlessness is a common and distressing symptom with an estimated prevalence of 9–11% in the general population,^{1,2} increasing with age to 25% of people over the age of 70 years old.³ High healthcare use is associated with breathlessness in both primary and secondary care,^{4–6} and functional impairment from breathlessness is associated with reduced survival.⁷



Over half of the cases of chronic breathlessness are caused by cardiorespiratory disease,^{8,9} with clinical data relating to patients over the age of 40 indicating the most common causes are chronic obstructive pulmonary disease (COPD), heart failure (HF), obesity, anaemia and anxiety.^{9,10} These conditions may be diagnosed or excluded with investigations frequently available in a primary care setting.

Previous epidemiological studies from primary care have highlighted missed opportunities to diagnose conditions commonly presenting with breathlessness such as COPD and HF, with a large number of patients diagnosed in later stages of the disease or during hospitalisation.^{11,12} Evidence around misdiagnoses for COPD, asthma and interstitial lung disease (ILD)^{13,14} also indicates significant challenges in accurate and timely diagnosis for patients. Although there is a National Institute for Health and Care Excellence (NICE) clinical knowledge summary for investigating breathlessness and a National Health Service (NHS) England diagnostic pathway support tool for breathlessness advocating for a symptom-based approach (2023), neither specify whether to request in parallel or sequentially nor a short timeframe.^{15,16} Clinicians describe supporting an incremental approach to investigation aligning with disease-specific diagnostic guidelines.¹⁷ However, using a large UK primary care database (Clinical Practice Research Datalink (CPRD)), we have shown that 57% (57975/101369) of adults waited beyond 2 years for a diagnosis, but adults diagnosed within 6 months of presentation with breathlessness have a lower risk of hospital admissions and mortality compared with those waiting longer.¹⁸ Breathlessness has also been shown to cause a significant burden of ill health among individuals without a confirmed diagnosis.¹⁹

Our overarching hypothesis is that a symptom-based approach for diagnosis in primary care for chronic breathlessness, including a holistic suite of diagnostic investigations at the point of presentation, will lead to earlier diagnosis, earlier treatment and improved outcomes for patients. This approach may also reduce future health-care contacts and hospitalisations. However, there is clinical equipoise with concerns about overinvestigation, overdiagnosis and potential increased associated costs.²⁰

To investigate the clinical- and cost-effectiveness of a structured symptom-based diagnostic approach for chronic breathlessness, a large and potentially expensive multicentre cluster randomised controlled trial (cRCT) would be needed. We therefore conducted a feasibility study to inform design of a future trial. The main feasibility aims were:

1. To assess the feasibility of participant recruitment and retention rate to enable calculation of the number of general practitioner (GP) practices, cluster sizes and duration of the ultimate cRCT.
2. To better understand potential primary outcome measures for the future trial.
3. To understand any influence of the trial design on usual care.

METHODS

Study design

We conducted a mixed-methods feasibility study of a multicentre cRCT to investigate a structured diagnostic approach versus usual care for chronic breathlessness in primary care (REC reference: 19/EM/0201). The protocol has been published²¹ and registered as a clinical trial (ISRCTN: 14483247). We report the study in accordance with Consolidated Standards of Reporting Trials (CONSORT) reporting guidelines (CONSORT 2010 statement: extension to cluster randomised trials).

The mixed-methods design uses a convergent parallel approach where the quantitative and qualitative data are collected simultaneously, analysed separately and then brought together to enhance interpretation of the results.²²

Participants

10 GP practices in Leicestershire, UK, were cluster randomised to a structured diagnostic approach (intervention) including early investigations or usual care. Participants were opportunistically recruited from primary care when they presented to their GP with breathlessness. Participant eligibility criteria were adults over 40 years old, breathless for at least 2 months and within the first two presentations for breathlessness with a health-care professional. Participants were excluded if they had an existing diagnosis for breathlessness, were acutely unwell requiring hospitalisation or had an estimated prognosis of less than 1 year. An electronic template, triggered at the point of consultation by breathlessness Read codes or free text, was used to aid opportunistic recruitment.²³ Participants were blinded to their study arm and provided with the following information: ‘Your GP surgery has been put into a group at random to use certain guidance to help find the cause of your breathlessness.’

Intervention

The structured diagnostic approach included history and clinical examination alongside early investigations to be performed within one month in parallel (online supplemental figure 1): body mass index (BMI), spirometry, electrocardiogram (ECG), chest X-ray, full blood count, N-terminal-pro Brain Natriuretic Peptide (NT-proBNP) profile, anxiety and depression screening using the Patient Health Questionnaire—4 item (PHQ-4)²⁴ and the General Practice Physical Activity Questionnaire.²⁵ By excluding common causes quickly, this approach aims to facilitate clinicians to request the next step of investigations quickly, that is, full pulmonary function tests and high-resolution (HR) CT thorax where suspected ILD, or echocardiogram for HF after a raised NT-proBNP. The structured pathway used in the study was the output from stakeholder engagement including people with lived experience of breathlessness, the NICE breathlessness clinical knowledge summary guidance and the

Table 1 All feasibility outcomes

Feasibility measures	Outcomes
Number of patients recruited per GP practice population size	Patient recruitment ranged from 1 to 11 patients recruited per GP practice.
Retention rate	Retention rate was 85% (41/48).
Number of participating GP practices vs the number approached	10 out of the 15 GP practices that were contacted agreed to participate in this study.
Time for GPs to screen for eligibility	It is anticipated that the amount of time taken for clinicians to read through the electronic template with patients would vary between clinicians and patients. The electronic template was designed with Patient and Public Involvement and a patient representative devised the wording to maximise clarity for patients. Qualitative data from clinicians and practice staff indicate that the time taken within the patient consultation is acceptable (table 5).
Number of eligible patients who agree to be approached by the research team vs total number of eligible patients	The proportion of eligible patients who agreed to be approached vs the total number eligible ranged from 12% (11/89) to 57% (13/23) across the GP practices.
Number and timing of investigations in the diagnostic pathway completed	The Intervention group had a median (IQR) of 8 (7–9) tests compared with 5 (3–6) tests in usual care within 3 months (figure 2A).
Acceptability of the research visit to the participants	Participants described finding the walk test (Incremental Shuttle Walk Test) harder than expected and that there were a lot of questionnaires to complete, some of which were difficult to understand. Patient quotes describing the acceptability of research visits are presented in table 5.
Data collected from Interviews regarding participant experience of the trial	All participants interviewed expressed taking part in the study as a positive experience. Patient quotes describing participants' experiences of the research visit are presented in table 5.

GP, general practitioner.

Breathlessness IMPRESS Tips for Clinicians guidance,^{10 15} described in more detail in the protocol paper.²¹

A diagnostic pathway document was provided for GPs to support a structured history and examination, and prompt the investigations.²¹ In order to ensure participants in the intervention group had all investigations, if they were not performed in primary care, they were completed by the research team.

Control

The usual care group were asked to proceed with investigating the patient and their symptoms as per usual practice and were directed to the NICE clinical knowledge summary for breathlessness¹⁵ to standardise care.

Outcome measures

The primary outcome was recruitment and retention rate in order to subsequently calculate recruitment rate per practice to provide an estimation of cluster number and sizes required for future trial design. Ten GP sites were considered an adequate number of clusters. All feasibility outcomes are described in table 1. Secondary outcome measures included number of investigations

and diagnoses at 3 and 12 months, and time to diagnosis. Patient-reported outcome measures (PROMs) were collected at baseline, 6 and 12 months.

Physical outcome measures were also collected at baseline; collection methods are described in detail in online supplemental material and protocol paper.²¹ PROMs included health-related quality of life: the Chronic Heart Questionnaire (CHQ) self-report and EuroQol 5 Dimension 5-Level (EQ5D-5L); breathlessness: Dyspnoea-12, Multidimensional Dyspnoea Profile (MDP), Baseline Dyspnoea Index, Transition Dyspnoea Index (TDI) and the Medical Research Council (MRC) Dyspnoea scale; anxiety and depression using the Hospital Anxiety and Depression scores; patient knowledge and skills to manage their own health using the Patient Activation Measure. Participants were contacted up to three times for completion and return of their PROM questionnaires. Ease of use of PROM questionnaires was assessed by missing data and support required from the research team with follow-up questionnaires.

All outcome measures collected were part of the research visit. None of the results of these outcome measures such as the PROMs and physical outcome

measures were available to the GP practice and therefore did not influence diagnosis.

Semistructured interviews

Semistructured interviews were conducted with patients, clinicians and GP practice staff to understand their experiences of the diagnostic process for breathlessness and taking part in the study. The qualitative methods are described in detail elsewhere.¹⁷ In brief, interviews were conducted by one of two researchers trained in qualitative methods, recorded and transcribed verbatim. Qualitative data were analysed using thematic analysis.²⁶ The qualitative data addressing the feasibility aim to better understand 'usual care' have been reported elsewhere.¹⁷

Statistical analysis

Normality of the data was assessed using the Shapiro-Wilk test. Data are presented as mean (SD) or median (IQR). Exploratory data analysis was completed for the secondary outcome measures. The primary feasibility outcome measure was recruitment and retention rates. Recruitment rate was recorded as the proportion of participants who consented compared with the number of participants identified as eligible for the study. SPSS V.26 was used for statistical analysis. GraphPad Prism 9 was used for all figures presented.

Exploratory analysis was performed on time to diagnosis using survival analyses based on Cox proportional hazards modelling of time to diagnosis.

Patient and public involvement

The concept for this study was developed from discussions between patients and clinicians about how to improve local pathways for breathlessness as part of a National Health Service (NHS) Improving Quality project with the aim to streamline and coordinate care to achieve earlier diagnosis for patients with chronic breathlessness. Patients highlighted the delays to diagnosis they had experienced and the delays to treatments such as medication and exercise rehabilitation. The basis for the structured diagnostic approach used in this feasibility study was the output from stakeholder engagement using Listening into Action methods.²⁷ The process included GPs, community and hospital clinicians with cardiorespiratory background, managers, commissioners (payers) and patients with lived experience of chronic breathlessness. Members from the relevant NIHR Biomedical Research Centre Patient and Public Involvement (PPI) groups were embedded throughout the study design and conduct, providing specific advice including the duration of the research visits, patient-facing information, choice of outcome measures and balancing the time and burden of completing questionnaires. The wording for the electronic template to aid recruitment was developed by members of the PPI group.^{21 23} To demonstrate the value of fully embedding PPI throughout the study

process, we codeveloped a short animation for dissemination. The animation was narrated by a member of the PPI team (online supplemental figure 2).

RESULTS

The results are presented here aligning with the three feasibility aims.

Recruitment and retention

10 out of the 15 GP practices approached agreed to participate in the study. All practices approached had a patient population of 10 000 or greater, with an Indices of Multiple Deprivation quintile range of 1–5.

Recruitment rate was 32%, with 48/150 participants recruited between November 2019 and February 2021 (figure 1): 65% female, mean (SD) age 66 (11) years, BMI 31.2 (6.5), median (IQR) MRC dyspnoea scale grade 2 (2–3) (table 2). The baseline characteristics between the intervention and usual care groups were similar (tables 2 and 3 and online supplemental table 1). The intervention group had a slightly higher symptom burden in the baseline breathlessness PROMs compared with the usual care group. The recruitment rate ranged from 1 patient to 11 patients per GP practice population. The UK COVID pandemic started in March 2020. Recruitment rate pre COVID pandemic (study period November 2019 to March 2020) was 42%, with 36/86 participants recruited in this timeframe.

Missing data are summarised in online supplemental table 2. All feasibility outcomes are described in table 1.

No serious adverse events were recorded for this study, and there were no safety concerns raised by participating patients or GP practices.

Structured diagnostic approach versus usual care

The intervention group had a median (IQR) of 8 (7–9) tests compared with 5 (3–6) tests in UC within 3 months (figure 2A). CXR, blood tests and BMI were the most frequently completed investigations in both intervention and usual care groups (online supplemental table 3). Spirometry was unable to be performed for periods of the study due to the COVID pandemic and the reason for non-completion was also recorded (online supplemental material).

At 12 months, 11 (44%) patients in the intervention group had a coded diagnoses for their breathlessness versus 6 (26%) patients in usual care (figure 2B). Coded diagnoses are summarised in online supplemental figure 3. Exploratory Cox proportional hazards modelling of time to diagnosis (figure 2C) derived a non-significant HR of 1.78 (95% CI 0.66 to 4.82, $p=0.26$), indicating the intervention group had 78% (95% CI –34% to 382%) greater chance of diagnosis relative to the usual care group.

Healthcare utilisation for both groups is summarised in online supplemental table 4.

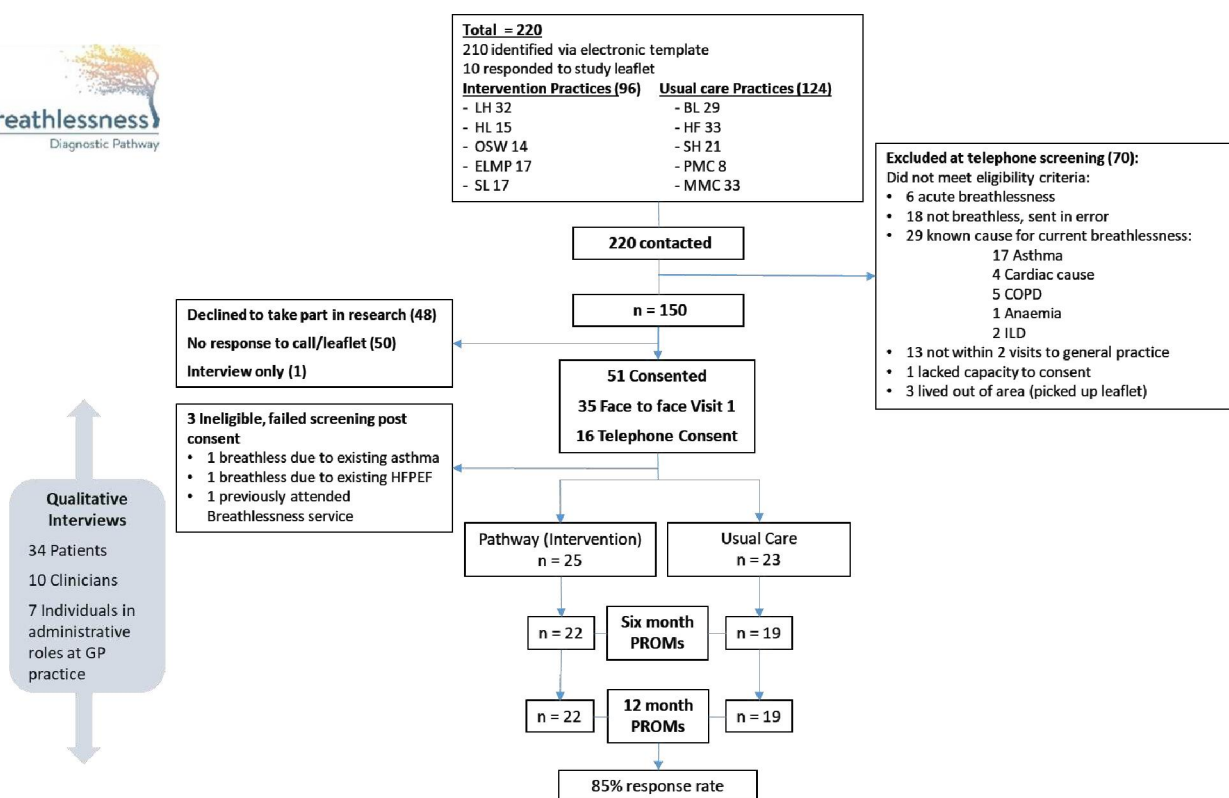


Figure 1 Consolidated Standards of Reporting Trials diagram. COPD, chronic obstructive pulmonary disease; GP, general practitioner; HFPEF, heart failure with preserved ejection fraction; ILD, interstitial lung disease; PROMs, patient reported outcome measures. *Individual Practices initialled rather than named.

For the PROMs (exploratory outcomes), the mean difference between the intervention and usual care groups from baseline to 12 months was greater than the minimal clinically important difference (MCID) for symptom burden and quality of life, the MDP immediate perception and emotional response domains, the Dyspnoea 12, the Dyspnoea domain of the CHQ and the Utility Index for the EQ5D-5L (table 4 and online supplemental figure 4). No difference between groups was seen in the Hospital Anxiety and Depression score. The TDI indicated an improvement in the intervention group and deterioration in the control group (online supplemental table 5).

From 82 questionnaire follow-ups (41 at 6 and 12 months), participants required help to complete with a range of 3–10 instances.

Understanding the influence of the trial design

34 patient participants, 10 clinician participants and 7 GP practice staff completed semistructured interviews. Patients: 20 (59%) were female, mean (SD, range) age 68 (10.8, 48–89) years, 32 (94%) white British, 1 black African and 1 Asian British, median (IQR) indices of multiple deprivation quintile 3 (2–5). The clinicians had a mean (SD, range) of 17 (6.3, 6–30) years' experience, 5 (50%) were female, 3 were Asian/Asian British and 7 were white British, 9 were GPs and 1 respiratory nurse. Six (86%) of the GP practice staff were female and

all were white British. The qualitative data and themes addressing the feasibility aim to better understand 'usual care' have been reported elsewhere.¹⁷ The qualitative data related to study experience and influence of the study are presented in table 5.

All participants interviewed reported that taking part in the study was a positive experience. Participants commented there were a lot of questionnaires to complete, some of which were difficult to understand. One participant had additional needs to complete the questionnaires and the researcher supported them to ensure the questionnaires remained answered.

Clinicians and practice staff were mostly satisfied with the experience of being in the study. Views about using the electronic template for opportunistic participant recruitment were largely positive, in particular the low burden on time in a consultation, and are described in more detail elsewhere.²³ The role of the GP practice to recruit patients appeared to be acceptable and interviewees expressed that although overall they did not feel being in the study influenced their practice in usual care, it made them more aware of the contributing factors to breathlessness (such as anxiety) and the need to be clear in their documentation.

Future sample size

Using an SD of 1.61 from the CHQ Dyspnoea domain in this study, the MCID for the CHQ of 0.5,²⁸ and with loss

**Table 2** Baseline characteristics

	All participants (n=48)	Usual care (n=23)	Intervention (n=25)
Age (years)	65.8 (11.3)	64.9 (11.6)	64.5 (11.3)
Gender, n (% female)	31 (65)	16 (70)	15 (60)
Ethnicity			
White	44 (92)	21 (92)	23 (92)
Asian/Asian British	2 (4)	1 (4)	1 (4)
Black/African/Caribbean/Black British	2 (4)	1 (4)	1 (4)
Body mass index (kg/m ²)	31.2 (6.5)	30.8 (6.6)	31.7 (6.5)
Indices of Multiple Deprivation (quintile)	3 (2–4)	3 (2–5)	4 (3–4)
Medical Research Council dyspnoea score	2 (2–3)	2 (2–3)	3 (2–3)
Smoking status (%)			
Current	5 (10)	2 (9)	3 (12)
Former	21 (44)	11 (48)	10 (40)
Never	22 (46)	10 (43)	12 (48)
Pack years	16.0 (5.9–39.2)	16.0 (6.3–37.5)	16.0 (5.1–42.0)
-Range	0.2–120.0	0.2–47.0	0.25–120.0
Asbestos exposure—self-report (%)	9 (19)	7 (30)	2 (8)
Occupational dust exposure—self-report (%)	20 (42)	10 (44)	10 (40)
Living alone (%)	14 (29)	8 (35)	6 (24)
Retired (%)	28 (58)	14 (61)	14 (56)
Number of comorbidities	3 (2–6)	3 (1–5)	4 (2–7)
Number of medications	4 (0–5)	3 (2–6)	3 (1–6)
Rockwood frailty score	4 (3–4)	4 (3–4)	4 (3–4)

Data are presented as mean (SD), frequency (n, %) or median (IQR).
Dyspnoea scale. Rockwood frailty score: 1 = very fit, 2 = well no active disease, 3 = well with treated comorbid disease, 4 = apparently vulnerable, 5 = mildly frail, 6 = moderately frail, 7 = severely frail.

to follow-up of 15%, the sample required for 80% power at the 5% significance level before inflating for clustering is 386 participants (193 per arm); 328 overall before accounting for loss to follow-up. With an estimate of the intracluster correlation coefficient (ICC) of 0.1, derived from the participant data in this study from the CHQ Dyspnoea domain, the inflation factor is around 1.69 (based on mean cluster size of 7, minimum 2, maximum 12 after loss to follow-up; ICC=0.1), so the total sample required would be 658 randomised (329 per arm from 47 clusters); 556 overall before accounting for loss to follow-up.

DISCUSSION

Our overarching aim is to improve the symptoms, quality of life and survival for adults living with chronic breathlessness through earlier diagnosis using an affordable approach for the healthcare system. We report the first intervention study aiming to improve the time to diagnosis for patients living with breathlessness. Through a feasibility study, we show that a future cRCT investigating a structured diagnostic approach for breathlessness is

feasible in primary care, demonstrated by a 32% recruitment and 85% retention rate. Our results indicate that the proposed symptom-based investigative approach, with parallel completion of early investigations rather than the usual incremental approach,^{16 17} supports the potential to reduce time to investigations and diagnoses for patients. The patient-reported outcomes indicated potential patient-level benefit with this approach, including symptoms and quality-adjusted life-years (EQ5D-5L at 1 year).

A primary outcome measure for a future trial could be a measure of health-related quality of life favoured by our patient and public involvement group. The CHQ was designed as a disease-specific health-related quality-of-life questionnaire and has been used in clinical trials for breathless populations.²⁹ Using data from our trial, we have shown a future sample size calculation would include a manageable study size across 40 general practices (cluster unit). The EQ5D-5L utility index transformed into quality-adjusted life-years can be used for cost-effectiveness analysis,³⁰ and our data would indicate potential responsiveness to the intervention.

Table 3 Patient-reported outcome measures and physical outcome measures at baseline

	All participants		Usual care		Intervention	
	n=47	% missing	n=22	% missing	n=25	% missing
Patient-reported outcome measures						
Dyspnoea –12	9.0 (3.0–17.0)		8.9 (2.0–13.5)		11.9 (4.3–17.5)	
MDP						
A1	4.3 (2.4)		3.5 (2.3)		5.0 (2.4)	
Immediate perception	19.0 (13.2)		14.9 (12.6)		22.5 (13.0)	
Emotional response	15.2 (12.4)		11.7 (12.3)		18.3 (11.7)	
CHQ						
Dyspnoea	3.2 (1.2)		3.2 (1.1)		3.1 (1.3)	
Fatigue	3.7 (1.4)		3.7 (1.4)		3.8 (1.4)	
Emotional	4.6 (1.3)		4.6 (1.4)		4.6 (1.3)	
Function mastery	4.8 (1.4)		4.6 (1.3)		4.9 (1.6)	
HADS						
Anxiety	7.2 (4.9)		6.6 (4.9)		7.7 (4.9)	
Depression	5.6 (3.8)		6.1 (4.3)		5.3 (3.3)	
EQ5D-5L VAS	70.1 (15.8)		66.8 (14.6)		74.6 (16.2)	
EQ5D-5L Index Value	0.77 (0.64–0.85)		0.77 (0.67–0.85)		0.74 (0.43–0.84)	
BDI focal score	6.4 (2.1)		6.2 (2.3)		6.7 (2.0)	
Physical outcomes						
ISWT (m)	23	52	348 (196)	9	61	426 (217)
						14
						44
						299 (170)
SpO2 post-ISWT (%)	92 (4)		93 (4)		92 (4)	
Peak HR (bpm)	92 (18)		103 (17)		85 (15)	
Peak BORG	3.0 (3.0–4.0)		3.5 (2.5–4.0)		3.5 (3.0–4.0)	
SPPB (score)	31	35	9.0 (7.0–11.0)	11	52	8.0 (7.0–11.0)
						20
						20
4MGS (s)	31	35	4.0 (3.5–5.2)	11	52	3.9 (3.6–5.6)
						19
						24
Body fat (kg)	32	33	39.4 (9.0)	12	48	31.5 (10.0)
						20
						20
Body fat (%)	34.1 (12.0)		38.6 (9.9)		39.9 (8.7)	
*Physical activity:						
Step count	32	33	5011 (2560)	11	52	5041 (3090)
						21
						16
						4996 (2320)

Continued



Table 3 Continued

Physical outcomes	n	% missing	n	% missing	n	% missing
Sedentary time (min)	29	40	660 (113)	48	649 (93)	32
47/48 participants completed the baseline PROMs. Physical outcome measures were collected where possible at face-to-face visits; some participants completed research visits by phone due to the pandemic. The number collected and % missing is presented.						
Data are presented as mean (SD), frequency (%) or median (IQR).						
*Physical activity: step count measured via Actigraph waist-worn device, Sedentary time measured via GENEActiv device.						
A1, affective domain 1 (relating to breathing discomfort); A2, affection domain 2 (relating to emotional responses); BDI, Baseline Dyspnoea Index (score from 0 to 12, with a lower score showing worse impairment); CHQ, Chronic Heart Questionnaire (self-report); EQ5D-5L, EuroQol-5 Dimension 5 level questionnaire; HADS, Hospital Anxiety and Depression Score; HR, heart rate; ISWT, Incremental Shuttle Walk Test; MDP, Multidimensional Dyspnoea Index; 4MGS, 4 metre gait speed; PAM, Patient Activation Measure; SPPB, short performance physical battery; VAS, visual analogue scale.						

Delays to diagnosis for people presenting with breathlessness are well documented, and we have recently shown in a cohort study that 33% of 101 369 patients did not receive any diagnosis within 2 years of presentation with breathlessness.¹⁸ We also reported that delays to diagnosis were associated with a higher risk of hospital admissions and mortality in the subsequent two years.¹⁸ Our symptom-based approach used in the current study contrasts with current disease-specific clinical algorithms for assessment and diagnosis described in a review³¹ whereby a stepwise approach is used for investigation and in a 'disease silo' from other potential contributing conditions. Many of the studies identified used patient history, physical examination, FBC, CXR and ECG as the first stage in their diagnostic algorithm but without a specified timeframe. Importantly only one study in the review was undertaken in primary care, highlighting the lack of evidence despite primary care being the most likely place of first presentation with breathlessness with cross-sectional data suggesting breathlessness accounts for 4% of consultations in primary care.⁵

NHS England have developed and recently published a diagnostic tool for breathlessness¹⁶ which closely aligns with the diagnostic investigations used in the current study, but did not advocate performing an early panel of investigations, rather it provides flexibility to complete initial investigations according to clinical judgement. However, our data from CPRD highlights the current delays to diagnosis and associated worse outcomes from the latter approach. Our qualitative research conducted as part of this mixed-methods study highlighted the possible reasons for delay to diagnosis included challenges with symptom recognition, timely investigations and confirming a positive diagnosis.¹⁷ An incremental approach to investigation to rule out individual diagnoses was described by clinicians, aligning with disease-specific guidelines which promote excluding a particular diagnosis, rather than a holistic approach to find all causes of a symptom. Following an incremental approach could be appropriate if timely investigations and multiple reviews were possible; however, this is commonly not achievable, would use more clinician time and has been further exacerbated by the COVID-19 pandemic causing delays in healthcare.³² A symptom-based approach also enables identification of multiple causes of breathlessness which is important and relevant as the prevalence of multiple long-term conditions rises and is a major problem for healthcare systems.³³ There remains clinician equipoise between using an early parallel investigations approach versus sequential investigations, but our study supports the former and a larger trial is feasible.

Our research also raises the question of which other investigations could be included in a diagnostic pathway in primary care with a desirable criterion of being low cost, accessible, sensitive and specific. We found that a holistic approach to breathlessness was often absent and screening for anxiety and depression was not routinely recorded as part of usual care with only 8% assessed in the

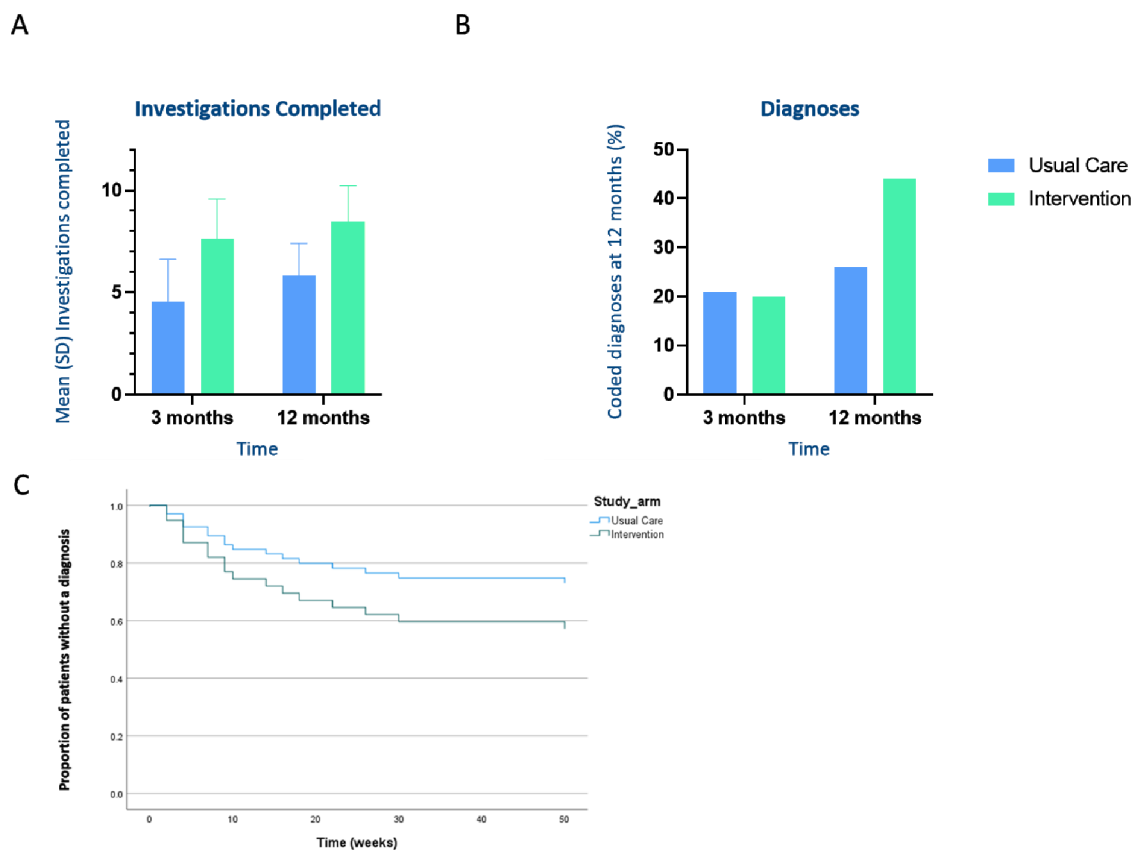


Figure 2 Investigations completed per patient and recorded diagnoses for intervention group versus usual care. (A) Mean (SD) number of investigations completed per patient at 3 and 12 months. (B) Proportion of coded diagnoses for breathlessness at 3 and 12 months. (C) Cox proportional hazards modelling of time to diagnosis over 1 year.

usual care group. Even in the intervention group, anxiety and depression screening was frequently picked up at the research visit having not been completed in primary care. A common screening tool is the four-item PHQ-4 screening tool, and this can be routinely embedded in electronic patient healthcare systems. Given the high prevalence of anxiety and depression associated with breathlessness,⁹ it is important to include screening as part of the diagnostic approach in the breathless patient population.³⁴ We also need to consider the impact of breathing pattern disorder (BPD) as a cause for breathlessness and a future diagnostic approach may need to include assessment for BPD. Tools to assess BPD include the Breathing Pattern Assessment Tool and the Nijmegen questionnaire which can screen for hyperventilation, but neither are commonly used in primary care and BPD diagnosis often requires specific clinician expertise. BPD has become more commonly seen in primary care due to long COVID.³⁵

Asthma was the most common diagnosis in both groups of the current feasibility study despite the population being over 40 years old. We purposefully chose not to include fractional exhaled nitrous oxide (FeNO) in our panel of investigations due to the diagnostic approach of having all investigations for all patients. FeNO is a relatively quick and easy investigation to complete in primary care, with NO as a biomarker of type

II airway inflammation commonly seen in the diagnosis of asthma.³⁶ It has been shown to have good specificity for diagnosing asthma, particularly in the presence of wheezing and rhinitis, but a lower sensitivity.³⁷ We made an assumption that the population over 40 were at high risk of the common conditions our panel were able to either diagnose or exclude and tested whether doing all the investigations as a panel led to further diagnoses. An early panel of investigations will also capture multiple diagnoses for breathlessness facilitating a treatable traits personalised medicine approach to encompass mental health support, weight management and promotion of physical activity. Further refining the approach to add individual risk stratification for chronic cardiorespiratory disease might help reduce any unnecessary investigations. Similarly, increasing the complexity of the pathway to include assessment of the pre-test probability of asthma would help suggest how FeNO testing should be integrated. We only tested rather basic investigations in the current study, but still showed the potential for a positive signal for the majority of outcomes. Research is ongoing to understand the risk factors for breathlessness using machine learning that could also be added to a future algorithm.³⁸

Advances are being made with other biomarkers other than blood tests; the role of exhaled breath volatile organic compounds in differentiating acute



Table 4 Comparison of patient-reported outcomes measures for 6- and 12-month responders

	Usual care (n=19)				Intervention (n=22)				Mean group difference (IG-UC) change from baseline at 12 months
	Baseline	6 months	12Months	Baseline	6 months	12Months	12Months	MCID	
MDP*									
Immediate perception	14.0 (12.9)	13.7 (14.0)	16.6 (15.2)	24.8 (12.1)	13.6 (10.6)	12.0 (10.1)	12.0 (10.1)	-4.6	-15.4 (3.5)†
Emotional response	9.8 (12.2)	8.4 (12.0)	10.9 (12.5)	18.6 (12.0)	11.9 (11.9)	11.7 (13.1)	11.7 (13.1)	-2.4	-8.5 (3.8)†
Dyspnoea-12*	7.4 (5.8)	9.4 (7.9)	9.1 (9.0)	12.7 (8.2)	8.7 (8.4)	8.1 (7.0)	8.1 (7.0)	-2.8	-6.3 (2.6)†
Nijmegen	16.3 (8.4)	17.8 (10.8)	15.6 (9.4)	22.2 (10.1)	19.2 (10.3)	17.5 (11.1)	17.5 (11.1)	N/A	-5.1 (2.6)
% with score indicating HVS	26	26	26	41	27	30	30		
CHQ									
Dyspnoea	3.3 (1.2)	3.6 (1.4)	3.7 (1.4)	3.0 (1.3)	4.5 (1.4)	4.3 (1.7)	4.3 (1.7)	0.5	1.0 (0.5)†
Fatigue	4.0 (1.3)	3.8 (1.4)	4.0 (1.3)	3.7 (1.5)	4.1 (1.4)	4.0 (1.4)	4.0 (1.4)	0.5	0.3 (0.3)
Emotional function	4.9 (1.4)	5.0 (1.4)	5.0 (1.4)	4.6 (1.2)	5.0 (1.3)	4.7 (1.5)	4.7 (1.5)	0.5	0.1 (0.3)
Mastery	4.9 (1.1)	5.0 (1.5)	5.1 (1.5)	4.8 (1.6)	5.1 (1.3)	5.2 (1.5)	5.2 (1.5)	0.5	0.2 (0.5)
HADS									
Anxiety	5.7 (4.1)	5.6 (4.6)	5.3 (4.3)	7.5 (4.5)	5.7 (3.1)	7.3 (4.5)	7.3 (4.5)	-1.7	0.3 (1.0)
Depression	5.6 (3.7)	5.3 (4.0)	6.1 (4.2)	5.3 (3.2)	4.7 (4.4)	6.0 (4.9)	6.0 (4.9)	-1.7	0.3 (1.0)
EQ5D-5L									
Index score	0.76 (0.16)	0.70 (0.33)	0.72 (0.25)	0.63 (0.31)	0.76 (0.20)	0.71 (0.26)	0.71 (0.26)	0.051	0.12 (0.07)†
VAS	68 (15)	66.3 (18.2)	67 (20)	74 (17)	74.30 (14.8)	67 (19)	67 (19)	6.9	-6 (5)
Patient Activation Measure	55.5 (10.9)	56.5 (12.9)	55.2 (9.3)	59.2 (14.7)	61.2 (15.6)	56.9 (15.5)	56.9 (15.5)	4	-1.2 (2.9)

Data are presented as mean (SD), frequency (%) or median (IQR). Shaded column is to highlight the minimally clinically important difference threshold for each of the outcome measures.

*MDP and Dyspnoea-12: reduction in score = improvement.

†Mean group difference (IG-UC) from baseline to 12 months greater than MCID.

CHQ, Chronic Heart Questionnaire; EQ5D-5L, EuroQol 5 Dimension 5 Level questionnaire; HADS, Hospital Anxiety and Depression Score; HVS, hypoventilation syndrome; MCID, minimal clinically important difference; MDP, Multidimensional Dyspnoea Profile; VAS, visual analogue scale.

Table 5 Feasibility measures collected from interviews with patients and clinicians

<p>Time for GPs to screen for eligibility using the electronic template pop up (clinician and GP practice admin staff quotes)</p>	<p><i>"Well, I have to say it's been very unobtrusive hasn't it. Because all that you've been asking us to do is ask the patient."</i> (Clinician)</p> <p><i>"I think on SystmOne as soon as you type breathlessness all of the information comes up which is really great. I think it prompts people to think about the study and to think about, is this patient possibly suitable?"</i> (Clinician)</p> <p><i>"There's a few GPs that get irritated by too many pop-ups, so I've had the odd comment about it. But I think that's sometimes more a reflection of just the general stress and tiredness that everyone's feeling at the moment more than anything."</i> (Practice staff)</p> <p><i>"But yeah when it popped up, not a problem ... so it's a fairly straightforward would you be interested or not?"</i> (Clinician)</p> <p><i>"... since COVID, everybody's breathless, so it popped up more times than it probably should have, because obviously more people are becoming more breathless with COVID and things like that. But before that I think it worked pretty well, because it's just like a little reminder to the GPs to ask if they want to participate."</i> (Practice staff)</p>
<p>Acceptability of the research visit to patients (patient quotes)</p>	<p><i>'I was very interested in it and I was very pleased to do the exercises and that to see, so that somebody else could see how good or bad I was, you know, with my breathing and that.'</i> (Patient)</p> <p><i>'It was all right once I was there and I did the tests, it was all right once I got back. It was a long day though'</i> (Patient)</p> <p><i>'Because you've taken time to explain things. Because there was a lot of good clear information sent out at the start.'</i> (Patient)</p> <p><i>'I had loads of forms, and I'm dyslexic, you helped me all through that though.'</i> (Patient)</p>
<p>Participant experience of the trial (Patient quotes)</p>	<p><i>"I found it helpful, probably found it helpful just to talk as well, you know, to be able to talk to somebody about it [breathlessness]; instead of just, I suppose instead of just worrying about it, you know."</i> (Patient)</p> <p><i>"I think it's been quite good. And I think it helps people to offload a bit as well, and think that somebody's taking notice. I think that's really important. To think that somebody's actually going and researching and trying to make a difference, that's important, especially if it's like me when they think doctors aren't listening, and thinking how important it is and how much it's affecting people's lives."</i> (Patient)</p> <p><i>"Well I think from my perspective lovely, because somebody's interested in what I'm doing. But as far as the study goes, I've not found it intrusive or difficult ... made to feel as though they're valued and important. So yeah I think it's a good thing. I'm interested in what you're doing."</i> (Patient)</p> <p><i>"... you can talk about things that you wouldn't normally talk about, to be fair, I mean, I wouldn't say what I've just said to you to anybody else, to anybody, because the doctors don't want to know that, understandable but no."</i> (Patient)</p>

Continued



Table 5 Continued

<p>GP experience of participating in the trial and influence on their practice (clinician quotes)</p>	<p>“... the thought crossed my mind as to whether or not if I would do things differently. But no I don't think it has because I think I would still do what I think is right for the patient ... I was fairly confident that how we manage things in the practice I think we practice a good level of medicine, so I think I don't mind the fact that we weren't put into the intervention trial. So, I think that didn't bother me really.” (Clinician)</p> <p>“From my point of view, I would possibly say no [to influence on practice], but that's just myself, because I don't think there's anything really that I wouldn't have already done in terms of investigation, how I've managed these patients. I suppose the only, thinking about it is I know in your study you've got the questionnaires haven't you, the more mental health side questionnaires. I suppose whether that side of it, I'm more, I guess maybe more aware of that being a potential source of patient symptoms, the anxiety side of things.” (Clinician)</p> <p>“I think that does make you think about what you're doing more. I mean from a, you know, you try not to change what you're doing but I suppose you're a little bit more cautious...you probably make a little bit more of an effort to write things more clearly and be a bit more thorough.” (Clinician)</p> <p>“It's perhaps just thinking about how we teach GPs to approach it generally and about how we code breathlessness and what approach we take.” (Clinician)</p>
---	---

GP, general practitioner.

breathlessness has been explored as an option for non-invasive diagnostics in acute settings with cardiorespiratory patients.³⁹ It is not currently known how this could translate into primary care but there is an urgent need for novel diagnostics, particularly for airways disease.

While we focused on performing simple, basic investigations which should be readily accessible in primary care, notwithstanding the challenges with spirometry,⁴⁰ we acknowledge this is only the first step in the diagnostic process. However, even by influencing the investigations at this early step, 44% of patients in the intervention group of the cRCT had a coded diagnosis for their breathlessness at 12 months compared with 26% in usual care. These investigations (and the time saved by doing them early and in parallel) should help in selecting further investigations and/or specialist reviews. A further feature of our approach locally is a joint cardiorespiratory specialist clinic for unexplained breathlessness after the panel of investigations. Patients in both clusters could have been referred to this clinic by their GP and therefore may have reduced the comparable effect of the intervention. We only used ‘coded diagnoses’ to reflect the healthcare record used by clinicians.

We have previously reported from patient interviews that breathlessness management is an unmet need while awaiting a diagnosis and others report the wider patient unmet need in those with an established diagnosis.¹⁷ Although this was a feasibility study, symptom burden and quality-of-life outcomes in our study indicate possible

patient benefit for those in the intervention group, but we acknowledge the importance and necessity of specific breathlessness self-management and therapies including exercise rehabilitation in addition to the diagnosis and disease-specific treatment.

More females than males were recruited to the study and reflects the baseline population; in a community population survey for breathlessness (1) there was a higher prevalence of breathlessness in women (11.3%) than men (6.3%; $p < 0.001$, OR 1.9; 95% CI 1.5 to 2.4), and (2) data from a cross-sectional study showed 66% of a middle-aged population presenting with breathlessness were female (9).

Strengths and limitations of the study

Due to the study recruitment period, it is anticipated that the pandemic and the subsequent impact on primary care processes may have reduced the number of patients presenting to their GP,^{32 41} willingness to participate in the study and availability of some of the diagnostic tests, particularly spirometry. Spirometry was halted entirely in primary care from March 2020 to the end of our study period.⁴²

The intervention group appeared to have slightly better health reflected in the baseline measures compared with the usual care group. The recruitment rate of 32% (48/150) was considered acceptable based on previous studies^{43–45} and was achieved despite the

known challenges of recruiting in primary care and with the added restrictions resulting from the COVID-19 pandemic. The recruitment rate prior to the COVID pandemic of 42% is likely more relevant for future trial design, and the range in recruitment seen between practices indicates the need to account for this variation within the future trial sample size calculation. Our study employed a pragmatic approach with the intervention embedded in clinical care at the GP practice level, opportunistic recruitment at the point of patient presentation and adaptation to the design allowing continued recruitment through the COVID pandemic.

Opportunistic recruitment was a successful approach in this study design to identify a patient by a symptom at presentation in order to intervene in real time and has been shown to be of benefit in previous primary care studies.⁴⁶ There are many identified barriers to recruiting to research in primary care, including insufficient funding, resource and research experience in GP settings,⁴⁴ and recruitment rates typically vary in primary care research with other primary care trials reporting comparable rates of 25%⁴⁷ and 42%.⁴⁶ Our work has demonstrated that signposting patients about research at the point of presentation to healthcare, while reducing the burden on clinicians to discuss the research in detail, is a helpful approach.²³

Cluster randomisation at the level of the GP practice was selected to reduce the risk of contamination in usual care, and this appeared successful. The proposed diagnostic tool and future trial design might require further refinement. Of note, most participants recruited were of white British ethnicity which is not representative of the diverse ethnic backgrounds of our local population. Further work is needed to ensure diverse patient and public engagement and representation is embedded in the future trial design.⁴⁸

CONCLUSION

Our results indicate that a cRCT investigating a symptom-based structured diagnostic approach for chronic breathlessness is feasible in primary care, with recruitment rates comparable with fully powered definitive trials in primary care. Improving patient care and experience for those living with breathlessness requires prompt and accurate diagnosis, allowing access to appropriate treatment and support. The structured diagnostic approach for chronic breathlessness used here appeared acceptable to patients and clinicians, with the potential to achieve more timely investigations and explanatory coded diagnoses, leading to potential patient-level benefit at 6 and 12 months. We report a positive indication that early parallel investigation as part of a structured diagnostic approach is of benefit but further refinement and a fully powered cRCT with health economic analysis would be needed to fully evaluate clinical and cost-effectiveness.

Author affiliations

- ¹NIHR Respiratory BRC Leicester, Department of Respiratory Sciences, University of Leicester, Leicester, UK
- ²Clinical Trials Unit, University of Leicester, Leicester, UK
- ³Clinical Trials Unit, Keele University, Newcastle-under-Lyme, UK
- ⁴NIHR Respiratory BRC Leicester, University Hospitals of Leicester NHS Trust, Leicester, UK
- ⁵Chair Hinckley & Bosworth Medical Alliance, Leicester, UK
- ⁶Department of Population Health Sciences, University of Leicester, Leicester, UK

Acknowledgements We acknowledge and are grateful to our public and patient involvement (PPI) members: Winifred Smart, Jagruti Lalseta, Brian Davies, Paul Ashby and Tony Watling. RAE thanks Professor Mike Morgan and the NIHR Research Design Service East Midlands, University of Leicester, for their support with the NIHR clinician scientist fellowship application. Thank you to Stacey Chantrell for her support with the qualitative interviews and Dr Noel Baxter for his advice and expertise with the diagnostic pathway design, building on the IMPRESS work. We also thank the clinicians who contributed to the development of the structured diagnostic pathway, including Professor Ruth Green, Mrs Louise Clayton, Mrs Karen Moore, Mr Alex Woodward, Mrs Jo Szymkowiak, Ms Alison Scott and Ms Jane Giles.

Contributors RAE conceived the research idea and developed the theory and plan for the study with MCS and DJ. GD drafted the initial manuscript amended by RAE. SW developed the electronic template for use in the recruitment strategy. All authors contributed to the study development and reviewed, commented and approved the manuscript. RAE is the guarantor.

Funding This work was funded by an NIHR Clinician Scientist Fellowship (CS-2016-16-020) awarded to RAE. NA is supported by the National Institute for Health Research (NIHR) Applied Research Collaboration East Midlands (ARC EM) and the NIHR Greater Manchester Patient Safety Research Collaboration. GD was partly funded by the NIHR Leicester Biomedical Research Centre—Respiratory in addition to CS-2016-16-020. RAE is supported by the NIHR Leicester Biomedical Research Centre—Respiratory. The views expressed are those of the authors and not necessarily those of the National Health Service, the NIHR or the Department of Health. The work was supported by the NIHR Leicester Biomedical Research Centre—Respiratory.

Competing interests None declared.

Patient and public involvement Patients and/or the public were involved in the design, or conduct, or reporting, or dissemination plans of this research. Refer to the Methods section for further details.

Patient consent for publication Written informed consent was obtained from all patients.

Ethics approval Ethics approval was provided by the Nottingham 1 Research Ethics Committee (REC reference: 19/EM/0201). Participants gave informed consent to participate in the study before taking part.

Provenance and peer review Not commissioned; externally peer reviewed.

Data availability statement Data are available upon reasonable request. Data are available on reasonable request from the corresponding author.

Supplemental material This content has been supplied by the author(s). It has not been vetted by BMJ Publishing Group Limited (BMJ) and may not have been peer-reviewed. Any opinions or recommendations discussed are solely those of the author(s) and are not endorsed by BMJ. BMJ disclaims all liability and responsibility arising from any reliance placed on the content. Where the content includes any translated material, BMJ does not warrant the accuracy and reliability of the translations (including but not limited to local regulations, clinical guidelines, terminology, drug names and drug dosages), and is not responsible for any error and/or omissions arising from translation and adaptation or otherwise.

Open access This is an open access article distributed in accordance with the Creative Commons Attribution 4.0 Unported (CC BY 4.0) license, which permits others to copy, redistribute, remix, transform and build upon this work for any purpose, provided the original work is properly cited, a link to the licence is given, and indication of whether changes were made. See: <https://creativecommons.org/licenses/by/4.0/>.

ORCID iDs

- Gillian Doe <http://orcid.org/0000-0003-4782-5811>
 Michael C Steiner <http://orcid.org/0000-0002-0127-0614>
 Rachael A Evans <http://orcid.org/0000-0002-1667-868X>



REFERENCES

- 1 Currow DC, Plummer JL, Crockett A, *et al.* A community population survey of prevalence and severity of dyspnea in adults. *J Pain Symptom Manage* 2009;38:533–45.
- 2 Bowden JA, To THM, Abernethy AP, *et al.* Predictors of chronic breathlessness: a large population study. *BMC Public Health* 2011;11:33.
- 3 Smith AK, Currow DC, Abernethy AP, *et al.* Prevalence and Outcomes of Breathlessness in Older Adults: A National Population Study. *J Am Geriatr Soc* 2016;64:2035–41.
- 4 Hutchinson A, Pickering A, Williams P, *et al.* Breathlessness and presentation to the emergency department: a survey and clinical record review. *BMC Pulm Med* 2017;17:53.
- 5 Frese T, Soback C, Herrmann K, *et al.* Dyspnea as the reason for encounter in general practice. *J Clin Med Res* 2011;3:239–46.
- 6 Stevens JP, Dechen T, Schwartzstein R, *et al.* Prevalence of Dyspnea Among Hospitalized Patients at the Time of Admission. *J Pain Symptom Manage* 2018;56:15–22.
- 7 Frostad A, Soyseth V, Andersen A, *et al.* Respiratory symptoms as predictors of all-cause mortality in an urban community: a 30-year follow-up. *J Intern Med* 2006;259:520–9.
- 8 Chen Y, Hayward R, Chew-Graham CA, *et al.* Prognostic value of first-recorded breathlessness for future chronic respiratory and heart disease: a cohort study using a UK national primary care database. *Br J Gen Pract* 2020;70:e264–73.
- 9 Sandberg J, Ekström M, Börjesson M, *et al.* Underlying contributing conditions to breathlessness among middle-aged individuals in the general population: a cross-sectional study. *BMJ Open Respir Res* 2020;7:e000643.
- 10 IMPRESS. Breathlessness impress tips (bits) for clinicians. 2016. Available: https://www.researchgate.net/publication/260362662_Breathlessness_IMPRESS_Tips_BITS_for_clinicians
- 11 Jones RCM, Price D, Ryan D, *et al.* Opportunities to diagnose chronic obstructive pulmonary disease in routine care in the UK: a retrospective study of a clinical cohort. *Lancet Respir Med* 2014;2:267–76.
- 12 Bottle A, Kim D, Aylin P, *et al.* Routes to diagnosis of heart failure: observational study using linked data in England. *Heart* 2018;104:600–5.
- 13 Heffler E, Crimi C, Mancuso S, *et al.* Misdiagnosis of asthma and COPD and underuse of spirometry in primary care unselected patients. *Respir Med* 2018;142:48–52.
- 14 du Bois RM. An earlier and more confident diagnosis of idiopathic pulmonary fibrosis. *Eur Respir Rev* 2012;21:141–6.
- 15 NICE. Clinical knowledge summary on breathlessness. 2017. Available: <https://cks.nice.org.uk/breathlessness> [Accessed Jul 2024].
- 16 NHS England. Adult breathlessness pathway (pre-diagnosis): diagnostic pathway support tool. 2023. Available: <https://www.england.nhs.uk/long-read/adult-breathlessness-pathway-pre-diagnosis-diagnostic-pathway-support-tool/>
- 17 Doe GE, Williams MT, Chantrell S, *et al.* Diagnostic delays for breathlessness in primary care: a qualitative study to investigate current care and inform future pathways. *Br J Gen Pract* 2023;73:e468–77.
- 18 Karsanji U, Lawson CA, Bottle A, *et al.* P182 Describing long-term outcomes and the association with both receiving a diagnosis and time to diagnosis in adults presenting with breathlessness: a uk retrospective study using electronic healthcare records. 2022;77:A179–80.
- 19 Poulos LM, Ampon RD, Currow DC, *et al.* Prevalence and burden of breathlessness in Australian adults: The National Breathlessness Survey—a cross-sectional web-based population survey. *Respirology* 2021;26:768–75.
- 20 Singh H, Dickinson JA, Thériault G, *et al.* Overdiagnosis: causes and consequences in primary health care. *Can Fam Physician* 2018;64:654–9.
- 21 Doe G, Clanchy J, Wathall S, *et al.* Feasibility study of a multicentre cluster randomised control trial to investigate the clinical and cost-effectiveness of a structured diagnostic pathway in primary care for chronic breathlessness: protocol paper. *BMJ Open* 2021;11:e057362.
- 22 Schoonenboom J, Johnson RB. How to Construct a Mixed Methods Research Design. *Kolner Z Sozpsychol* 2017;69:107–31.
- 23 Doe G, Wathall S, Clanchy J, *et al.* Comparing research recruitment strategies to prospectively identify patients presenting with breathlessness in primary care. *NPJ Prim Care Respir Med* 2022;32:49.
- 24 Kroenke K, Spitzer RL, Williams JBW, *et al.* An ultra-brief screening scale for anxiety and depression: the PHQ-4. *Psychosomatics* 2009;50:613–21.
- 25 DepartmentofHealthandSocialCare. General practice physical activity questionnaire. 2013.
- 26 Braun V, Clarke V. One size fits all? What counts as quality practice in (reflexive) thematic analysis? *Qual Res Psychol* 2021;18:328–52.
- 27 Listening in to Action. 2019. Available: <https://www.listeningintoaction.co.uk/index.php/process>
- 28 Jaeschke R, Singer J, Guyatt GH. Measurement of health status. Ascertaining the minimal clinically important difference. *Control Clin Trials* 1989;10:407–15.
- 29 Maddocks M, Brighton LJ, Farquhar M, *et al.* *Holistic services for people with advanced disease and chronic or refractory breathlessness: a mixed-methods evidence synthesis.* Southampton (UK): NIHR Journals Library, 2019.
- 30 Devlin NJ, Brooks R. EQ-5D and the EuroQol Group: Past, Present and Future. *Appl Health Econ Health Policy* 2017;15:127–37.
- 31 Sunjaya AP, Homaira N, Corcoran K, *et al.* Assessment and diagnosis of chronic dyspnoea: a literature review. *NPJ Prim Care Respir Med* 2022;32:10.
- 32 Doe G, Chantrell S, Williams M, *et al.* Breathless and awaiting diagnosis in UK lockdown for COVID-19...We're stuck. *NPJ Prim Care Respir Med* 2021;31:21.
- 33 Chowdhury SR, Chandra Das D, Sunna TC, *et al.* Global and regional prevalence of multimorbidity in the adult population in community settings: a systematic review and meta-analysis. *eClinicalMedicine* 2023;57:101860.
- 34 Panagioti M, Scott C, Blakemore A, *et al.* Overview of the prevalence, impact, and management of depression and anxiety in chronic obstructive pulmonary disease. *Int J Chron Obstruct Pulmon Dis* 2014;9:1289–306.
- 35 Evans R, Pick A, Lardner R, *et al.* Breathing difficulties after covid-19: a guide for primary care. *BMJ* 2023;381:e074937.
- 36 NICE. Asthma: diagnosis, monitoring and chronic asthma management. 2017. Available: <https://www.nice.org.uk/guidance/ng80> [Accessed Jun 2024].
- 37 Schneider A, Brunn B, Hapfelmeier A, *et al.* Diagnostic accuracy of FeNO in asthma and predictive value for inhaled corticosteroid responsiveness: A prospective, multicentre study. *EClinicalMedicine* 2022;50:101533.
- 38 Olsson M, Ekström M. Identifying the factors most strongly associated to breathlessness in the general population: an evaluation of 465 different factors using machine learning. *European Respiratory Journal* 2023;62:PA5351.
- 39 Ibrahim W, Natarajan S, Wilde M, *et al.* A systematic review of the diagnostic accuracy of volatile organic compounds in airway diseases and their relation to markers of type-2 inflammation. *ERJ Open Res* 2021;7:00030–2021.
- 40 Doe G, Taylor SJ, Topalovic M, *et al.* Spirometry services in England post-pandemic and the potential role of AI support software: a qualitative study of challenges and opportunities. *Br J Gen Pract* 2023;73:e915–23.
- 41 Moynihan R, Sanders S, Michaleff ZA, *et al.* Impact of COVID-19 pandemic on utilisation of healthcare services: a systematic review. *BMJ Open* 2021;11:e045343.
- 42 Hull JH, Lloyd JK, Cooper BG. Lung function testing in the COVID-19 endemic. *Lancet Respir Med* 2020;8:666–7.
- 43 Bower P, Wallace P, Ward E, *et al.* Improving recruitment to health research in primary care. *Fam Pract* 2009;26:391–7.
- 44 White D, Hind D. Projection of participant recruitment to primary care research: a qualitative study. *Trials* 2015;16:473.
- 45 Walters SJ, Bonacho dos Anjos Henriques-Cadby I, Bortolami O, *et al.* Recruitment and retention of participants in randomised controlled trials: a review of trials funded and published by the United Kingdom Health Technology Assessment Programme. *BMJ Open* 2017;7:e015276.
- 46 Hill JC, Garvin S, Chen Y, *et al.* Stratified primary care versus non-stratified care for musculoskeletal pain: findings from the STaRT MSK feasibility and pilot cluster randomized controlled trial. *BMC Fam Pract* 2020;21:30.
- 47 Dormandy E, Kavalier F, Logan J, *et al.* Maximising recruitment and retention of general practices in clinical trials: a case study. *Br J Gen Pract* 2008;58:759–66.
- 48 NIHR. Equality, diversity and inclusion strategy 2022-2027. 2022. Available: <https://www.nihr.ac.uk/documents/equality-diversity-and-inclusion-strategy-2022-2027/31295>