



# City Research Online

## City, University of London Institutional Repository

---

**Citation:** Liu, H. and Verrall, R. J. (2010). Bootstrap Estimation of the Predictive Distributions of Reserves Using Paid and Incurred Claims. *Variance*, 4, pp. 121-135.

This is the accepted version of the paper.

This version of the publication may differ from the final published version.

---

**Permanent repository link:** <https://openaccess.city.ac.uk/id/eprint/3845/>

**Link to published version:**

**Copyright:** City Research Online aims to make research outputs of City, University of London available to a wider audience. Copyright and Moral Rights remain with the author(s) and/or copyright holders. URLs from City Research Online may be freely distributed and linked to.

**Reuse:** Copies of full items can be used for personal research or study, educational, or not-for-profit purposes without prior permission or charge. Provided that the authors, title and full bibliographic details are credited, a hyperlink and/or URL is given for the original metadata page and the content is not changed in any way.

# **Bootstrap Estimation of the Predictive Distributions of Reserves Using Paid and Incurred Claims**

## **Abstract**

This paper presents a bootstrap approach to estimate the prediction distributions of reserves produced by the Munich chain ladder (MCL) model. The MCL model was introduced by Quarg and Mack (2004) and takes into account both paid and incurred claims information. In order to produce bootstrap distributions, this paper addresses the application of bootstrapping methods to dependent data, with the consequence that correlations are considered. Numerical examples are provided to illustrate the algorithm and the prediction errors are compared for the new bootstrapping method applied to MCL and a more standard bootstrapping method applied to the chain-ladder technique.

## **Keywords**

Bootstrap, Munich chain ladder, Correlation, Simulation

## **Acknowledgement**

Funding for this project from (name will be added after refereeing is completed) is gratefully acknowledged.

## 1. Introduction

Bootstrapping has become very popular in stochastic claims reserving because of the simplicity and flexibility of the approach. One of the main reasons for this is the ease with which it can be implemented in a spreadsheet in order to obtain an approximation to the estimation error of a fitted model in a statistical context. Furthermore, it is also straightforward to extend it to obtain the approximation to the prediction error and the predictive distribution of a statistical process by including simulations from the underlying distributions. Therefore, bootstrapping is a powerful tool for the most popular subject for reserving purposes in general insurance, the prediction error of the reserve estimates. It should be emphasised that to obtain the predictive distribution, rather than just the estimation error, it is necessary to extend the bootstrap procedure by simulating the process error. It is also important to realise that bootstrapping is not a “model”, and therefore it is important to ensure that the underlying reserving models are correctly calibrated to the observed data. In this paper, we do not address the issue of model checking, but simply show how a bootstrapping procedure can be applied to the Munich chain ladder model.

In the area of non-life insurance reserving, there are primarily two types of data used. In addition to the paid claims triangle, there is frequently a triangle of incurred data also available. The traditional approach is to fit a model to either paid or incurred claims data, separately, and one of the most popular methods in this context is the chain ladder technique. While we do not believe that this is the most appropriate approach for all data sets, it has retained its popularity for a number of reasons. For example, the parameters are understood in a practical context; it is flexible; and it is easy to apply. This paper concentrates on methods which have a chain ladder structure, and in this context, two types of approaches exist: deterministic methods such as chain ladder, and the recently developed stochastic chain ladder reserving models. When the chain ladder technique is used (either as a deterministic approach or using a stochastic model), one set of data will be omitted - either the paid or the incurred data can be used, but not both at the same time. Obviously, this does not make full use of all the data available and results in the loss of some information contained in those data.

This leads us to consider whether it is possible to construct a model for both data sets, and to a consideration of the dependency between the two run-off triangles. A related issue also arises when traditional methods are applied separately to each triangle, which produces inconsistent predicted ultimate losses. In response, Quarg and Mack (2004) proposed a different approach within a regression framework, considering the likely correlations between paid and incurred data. Quarg and Mack (2004) called this new method as the Munich chain ladder (MCL) model. It is this model that is the subject of this paper, and we show how the predictive distribution may be estimated using bootstrapping. Thus, in this paper an adapted bootstrap approach is described, combined with simulation for two dependent data sets. The spreadsheets used in this paper can be used in practice for any data sets, and are available on request from the authors.

The paper is set out as follows. Section 2 briefly describes the MCL model using a notation appropriate for this paper. In section 3, the basic algorithm and methodology of bootstrapping is explained. Section 4 shows how to obtain the estimates of the prediction errors and the empirical predictive distribution using the adapted bootstrapping and simulation methods. In Section 5, two numerical examples are provided including the data from Mack (1993) and also some real London market data. Finally, section 6 contains a discussion and conclusion.

## 2. The Munich chain ladder method

The MCL model aims to produce a more consistent prediction of ultimate claims when modelling both paid and incurred claim data. It is specially designed to deal with the correlation between paid and incurred claims as the traditional models, such as chain ladder model, sometimes produce unsatisfactory results by ignoring this dependence. It should be emphasized that the paid and incurred claims from the *same* calendar years are not correlated. It is that the paid claims (incurred claims) are correlated to the incurred claims (paid claims) from the next (previous) calendar year.

The fundamental structure of the MCL model is the same as Mack's distribution-free chain ladder model (Mack, 1993). In the other words, the chain ladder development factors in the MCL model are obtained by Mack's distribution-free approach. However, the MCL model adjusts the chain ladder development factors using the correlations between the observed paid and incurred claims. The adjusted chain ladder development factors therefore become individual not only for different development years but also for different accident years. The adjustment is explained in more detail in sections 2.1 and 2.2.

### 2.1 Notation and Assumptions

For ease of notation, we assume that we have a triangle of data. Although the data could be classified in different ways, we refer to the rows as "accident years" and the columns as "development years".

Denote  $C_{ij}^P$  as cumulative paid claims and  $C_{ij}^I$  as cumulative incurred claims occurred in accident year  $i$ , development year  $j$ , where  $1 \leq i \leq n$  and  $1 \leq j \leq n - i + 1$  for the observed data. The aim of the chain ladder technique and of MCL is to estimate the data up to development year  $n$ . This produces estimates for  $C_{ij}^P$  and  $C_{ij}^I$ , where  $1 \leq i \leq n$  and  $n - i + 2 \leq j \leq n$ , and we therefore refer to the complete rectangle of data in the assumptions:  $1 \leq i, j \leq n$ .

Mack's distribution-free chain ladder method models the pattern of the development factors, which are defined as  $F_{ij}^P = \frac{C_{i,j+1}^P}{C_{ij}^P}$ , for paid claims and  $F_{ij}^I = \frac{C_{i,j+1}^I}{C_{ij}^I}$ , for incurred claims. Also the ratios of

paid divided by incurred claims and the inverse are introduced as  $Q_{ij} = \frac{C_{ij}^P}{C_{ij}^I}$  and  $Q_{ij}^{-1} = \frac{C_{ij}^I}{C_{ij}^P}$ , respectively.

Furthermore, define the observed data for accident year  $i$ , up to development year  $k$  as  $P_i(k) = \{C_{ij}^P : j \leq k\}$ ,  $I_i(k) = \{C_{ij}^I : j \leq k\}$  and  $B_i(k) = \{C_{ij}^P, C_{ij}^I : j \leq k\}$ , for paid claims, incurred claims and both, respectively.

The following assumptions are taken from Quarg and Mack (2004), section 2.1.2.

#### *Assumptions A (Expectations)*

(AI) For  $1 \leq j \leq n$  there exists a constant  $f_j^P$  such that (for  $i = 1, \dots, n$ )

$$E\left[F_{ij}^P \mid P_i(j)\right] = f_j^P.$$

This assumption is for paid claims. It is necessary to make another analogous assumption for incurred claims since both data sets are taken into account.

(A2) For  $1 \leq j \leq n$ , there exists a constant  $f_j^I$  such that (for  $i = 1, \dots, n$ )

$$E[F_{ij}^I | I_i(j)] = f_j^I.$$

In order to analyse the two run-off triangles dependently, the following assumptions are also required.

(A3) For  $1 \leq j \leq n$ , there exists a constant  $q_j^{-1}$  such that (for  $i = 1, \dots, n$ )

$$E[Q_{ij}^{-1} | P_i(j)] = q_j^{-1}.$$

(A4) For  $1 \leq j \leq n$ , there exists a constant  $q_j$  such that (for  $i = 1, \dots, n$ )

$$E[Q_{ij} | I_i(j)] = q_j.$$

Note that assumptions (A3) and (A4) will apply that  $Q_{ij}$  is constant, which is contradictory – see section 3.1.2 of Mack and Quarg (2004) for a discussion of this point.

#### **Assumptions B (Variances)**

(B1) For  $1 \leq j \leq n$ , there exists a constant  $\sigma_j^P$  such that (for  $i = 1, \dots, n$ )

$$\text{Var}[F_{ij}^P | P_i(j)] = \frac{(\sigma_j^P)^2}{C_{ij}^P}.$$

Again, the analogous assumption for the incurred claims is made as follows.

(B2) For  $1 \leq j \leq n$ , there exists a constant  $\sigma_j^I$  such that (for  $i = 1, \dots, n$ )

$$\text{Var}[F_{ij}^I | I_i(j)] = \frac{(\sigma_j^I)^2}{C_{ij}^I}.$$

Also, for the ratios of incurred to paid and vice versa, the following variance assumptions are made.

(B3) For  $1 \leq j \leq n$ , there exists a constant  $\tau_j^P$  such that (for  $i = 1, \dots, n$ )

$$\text{Var}[Q_{ij}^{-1} | P_i(j)] = \frac{(\tau_j^P)^2}{C_{ij}^P}.$$

(B4) For  $1 \leq j \leq n$ , there exists a constant  $\tau_j^I$  such that for ( $i = 1, \dots, n$ )

$$\text{Var}[Q_{ij} | I_i(j)] = \frac{(\tau_j^I)^2}{C_{ij}^I}.$$

**Assumptions C (Independence)**

The usual assumptions for individual triangles are as follows:

(C1) The random variables pertaining to different accident years for paid claims, i.e.  $\{C_{1j}^P | j = 1, 2, \dots, n\}, \dots, \{C_{nj}^P | j = 1, 2, \dots, n\}$ , are stochastically independent.

(C2) The random variables pertaining to different accident years for incurred claims, i.e.  $\{C_{1j}^I | j = 1, 2, \dots, n\}, \dots, \{C_{nj}^I | j = 1, 2, \dots, n\}$ , are stochastically independent.

In fact, a stronger assumption is used (see section 3.2 of Quarg and Mack, 2004), which is independence of accident years across both paid and incurred claims:

(C3) The random sets  $\{C_{1j}^P, C_{1j}^I | j = 1, 2, \dots, n\}, \dots, \{C_{nj}^P, C_{nj}^I | j = 1, 2, \dots, n\}$ , are stochastically independent.

Using assumptions A to C, the Pearson residuals used in the MCL model can be defined as shown in equations (2.1) to (2.4). These residuals are a crucial part of the bootstrapping procedures described in section 4.

$$r_{ij}^P = \frac{F_{ij}^P - E[F_{ij}^P | P_i(j)]}{\sqrt{\text{Var}[F_{ij}^P | P_i(j)]}}, \quad (2.1)$$

$$r_{ij}^{Q^{-1}} = \frac{Q_{ij}^{-1} - E[Q_{ij}^{-1} | P_i(j)]}{\sqrt{\text{Var}[Q_{ij}^{-1} | P_i(j)]}}, \quad (2.2)$$

$$r_{ij}^I = \frac{F_{ij}^I - E[F_{ij}^I | I_i(j)]}{\sqrt{\text{Var}[F_{ij}^I | I_i(j)]}}, \quad (2.3)$$

and

$$r_{ij}^Q = \frac{Q_{ij} - E[Q_{ij} | I_i(j)]}{\sqrt{\text{Var}[Q_{ij} | I_i(j)]}}. \quad (2.4)$$

**Assumptions D (Correlations)**

(D1) There exists a constant  $\rho^P$  such that (for  $1 \leq i, j \leq n$ )

$$E[r_{ij}^P | B_i(j)] = \rho^P r_{ij}^{Q^{-1}}. \quad (2.5)$$

The following equation states that the constant  $\rho^P$  is in fact the correlation coefficient between the residuals. Note that since the residuals have variance 1, the correlation is equal to the covariance. The proof can be found in Quarg and Mack (2004).

$$\text{Cov}[r_{ij}^P, r_{ij}^{Q^{-1}} | P_i(j)] = \text{Corr}[r_{ij}^P, r_{ij}^{Q^{-1}} | P_i(j)] = \text{Corr}[F_{ij}^P, Q_{ij}^{-1} | P_i(j)] = \rho^P \quad (2.6)$$

Quarg and Mack (2004) derives expected MCL paid development factors adjusted by the correlation as shown in equation (2.7).

$$E[F_{ij}^P | B_i(j)] = E[F_{ij}^P | P_i(j)] + \sqrt{\frac{\text{Var}[F_{ij}^P | P_i(j)]}{\text{Var}[Q_{ij}^{-1} | P_i(j)]}} \text{Corr}[F_{ij}^P, Q_{ij}^{-1} | B_i(j)] (Q_{ij}^{-1} - E[Q_{ij}^{-1} | P_i(j)]). \quad (2.7)$$

(D2) Analogously to assumption (D1), for the incurred claims it is assumed that there exists a constant  $\rho^I$  such that (for  $1 \leq i, j \leq n$ )

$$E[r_{ij}^I | B_i(j)] = \rho^I r_{ij}^Q. \quad (2.8)$$

Similarly, the constant  $\rho^I$  measures the correlation coefficient or the covariance between the residuals. i.e.

$$\text{Cov}[r_{ij}^I, r_{ij}^Q | B_i(j)] = \text{Corr}[r_{ij}^I, r_{ij}^Q | B_i(j)] = \text{Corr}[F_{ij}^I, Q_{ij} | B_i(j)] = \rho^I \quad (2.9)$$

Hence, the expected MCL incurred development factors adjusted by the correlation can be derived as follows:

$$E[F_{ij}^I | B_i(j)] = E[F_{ij}^I | I_i(j)] + \sqrt{\frac{\text{Var}[F_{ij}^I | I_i(j)]}{\text{Var}[Q_{ij} | I_i(j)]}} \text{Cov}[F_{ij}^I, Q_{ij} | B_i(j)] (Q_{ij} - E[Q_{ij} | I_i(j)]). \quad (2.10)$$

## 2.2 Unbiased Estimates of the Parameters

In this section, we summarise the unbiased estimates of the parameters derived by Quarg and Mack (2004). For the paid data, estimates are required for the parameters of the development factors, the variances and also the correlation coefficient.

The estimates of the paid development factor parameters can be interpreted as weighted averages of the observed development factors  $F_{ij}^P$  or  $Q_{ij}^{-1}$ , using  $C_{ij}^P$  as the weights:

$$\hat{f}_j^P = \frac{\sum_{i=1}^{n-j} C_{i,j+1}^P}{\sum_{i=1}^{n-j} C_{ij}^P} = \sum_{i=1}^{n-j} \frac{C_{ij}^P}{\sum_{i=1}^{n-j} C_{ij}^P} F_{ij}^P \quad (2.11)$$

and

$$\hat{q}_j^{-1} = \frac{\sum_{i=1}^{n-j+1} C_{ij}^I}{\sum_{i=1}^{n-j+1} C_{ij}^P} = \sum_{i=1}^{n-j+1} \frac{C_{ij}^P}{\sum_{i=1}^{n-j+1} C_{ij}^P} Q_{ij}^{-1}. \quad (2.12)$$

The unbiased estimates of the variances are as follows:

$$(\hat{\sigma}_j^P)^2 = \frac{1}{n-j-1} \sum_{i=1}^{n-j} C_{ij}^P (F_{ij}^P - \hat{f}_j^P)^2 \quad (2.13)$$

and

$$(\hat{\tau}_j^P)^2 = \frac{1}{n-j} \sum_{i=1}^{n-j+1} C_{ij}^P (Q_{ij}^{-1} - \hat{q}_j^{-1})^2 \quad (2.14)$$

Hence the Pearson residuals are

$$r_{ij}^P = \frac{F_{ij}^P - \hat{f}_j^P}{\hat{\sigma}_j^P} \sqrt{C_{ij}^P} \quad (2.15)$$

and

$$r_{ij}^{Q^{-1}} = \frac{Q_{ij}^{-1} - \hat{q}_j^{-1}}{\hat{\tau}_j^P} \sqrt{C_{ij}^P}. \quad (2.16)$$

Finally, the estimate of the correlation coefficient is given in equation (2.17).

$$\hat{\rho}^P = \frac{\sum_{i,j} r_{ij}^{Q^{-1}} r_{ij}^P}{\sum_{i,j} (r_{ij}^{Q^{-1}})^2}. \quad (2.17)$$

Similarly, for incurred data, the estimates of the development factor parameters can be interpreted as weighted averages of the development factors  $F_{ij}^I$  or  $Q_{ij}^{-1}$ , using  $C_{ij}^I$  as the weights:

$$\hat{f}_j^I = \frac{\sum_{i=1}^{n-j} C_{i,j+1}^I}{\sum_{i=1}^{n-j} C_{ij}^I} = \sum_{i=1}^{n-j} \frac{C_{ij}^I}{\sum_{i=1}^{n-j} C_{ij}^I} F_{ij}^I \quad (2.18)$$

and

$$\hat{q}_j = \frac{\sum_{i=1}^{n-j+1} C_{ij}^P}{\sum_{i=1}^{n-j+1} C_{ij}^I} = \sum_{i=1}^{n-j+1} \frac{C_{ij}^I}{\sum_{i=1}^{n-j+1} C_{ij}^I} Q_{ij}^{-1}. \quad (2.19)$$

Also the unbiased estimates for the variance parameters are as follows:



$$(\hat{\sigma}_j^I)^2 = \frac{1}{n-j-1} \sum_{i=1}^{n-j} C_{ij}^I (F_{ij}^I - \hat{f}_j^I)^2. \quad (2.20)$$

and

$$(\hat{\tau}_j^I)^2 = \frac{1}{n-j} \sum_{i=1}^{n-j+1} C_{ij}^I (Q_{ij} - \hat{q}_j)^2. \quad (2.21)$$

Hence the Pearson residuals are

$$r_{ij}^I = \frac{F_{ij}^I - \hat{f}_j^I}{\hat{\sigma}_j^I} \sqrt{C_{ij}^I} \quad (2.22)$$

and

$$r_{ij}^O = \frac{Q_{ij} - \hat{q}_j}{\hat{\tau}_j^I} \sqrt{C_{ij}^I}. \quad (2.23)$$

And finally, the estimate of the correlation coefficient is given in equation (2.24).

$$\hat{\rho}^I = \frac{\sum_{i,j} r_{ij}^O r_{ij}^I}{\sum_{i,j} (r_{ij}^O)^2}. \quad (2.24)$$

Assumptions A in section 2.1 have defined the expectations of the development factors, given just the data in the respective triangles. In order to produce a single estimate based on the data from both paid and incurred data, Quarg and Mack (2004) also considers the expectations of the development factors given both triangles and defines  $E[F_{ij}^P | B_i(j)] = \lambda_{ij}^P$  and  $E[F_{ij}^I | B_i(j)] = \lambda_{ij}^I$ . Using plug-in estimates from equations (2.11) to (2.17), the estimates of the paid MCL development factors are calculated using equation (2.7):

$$\hat{\lambda}_{ij}^P = \hat{f}_j^P + \hat{\rho}^P \frac{\hat{\sigma}_j^P}{\hat{\tau}_j^P} (Q_{ij}^{-1} - \hat{q}_j^{-1}). \quad (2.25)$$

Similarly, plug-in estimates from equations (2.18) to (2.24) are used in equation (2.10) so that the estimates of the incurred development factors are

$$\hat{\lambda}_{ij}^I = \hat{f}_j^I + \hat{\rho}^I \frac{\hat{\sigma}_j^I}{\hat{\tau}_j^I} (Q_{ij} - \hat{q}_j). \quad (2.26)$$

### 3. Bootstrapping and Claims Reserving

Bootstrapping is a simulation-based approach to statistical inference. It is a method for producing sampling distributions for statistical quantities of interest by generating pseudo samples, which are obtained by randomly drawing, with replacement, from observed data. It should be emphasized that bootstrapping is a method rather than a model. Bootstrapping is useful only when the underlying model is correctly fitted to the data, and bootstrapping is applied to data which are required to be independent and identically distributed. The bootstrapping method was first introduced by Efron (1979) and a good introduction to the algorithm can be found in Efron and Tibshirani (1993).

For the purpose of clarity we begin by giving a general bootstrapping algorithm and briefly reviewing previous applications of bootstrapping to claims reserving. In section 4, we show how an algorithm of this type can be applied to the MCL. Suppose we have a sample  $\bar{X}$  and we require the distribution of a statistic  $\hat{\theta}$ . The following three steps comprise the simplest bootstrapping process:

- 1 Draw a bootstrap sample  $\bar{X}_1^B = \{X_1^B, X_2^B, \dots, X_n^B\}$  from the observed data  $\bar{X} = \{X_1, X_2, \dots, X_n\}$ .
- 2 Calculate the statistic of interest  $\hat{\theta}_1^B$  for the first bootstrap sample  $\bar{X}_1^B = \{X_1^B, X_2^B, \dots, X_n^B\}$ .
- 3 Repeat steps 1 and 2  $N$  times.

By repeating steps 1 and 2  $N$  times, we obtain a sample of the unknown statistic  $\hat{\theta}$ , calculated from  $N$  pseudo samples, i.e.  $\bar{\theta}^B = \{\hat{\theta}_1^B, \hat{\theta}_2^B, \dots, \hat{\theta}_N^B\}$ . When  $N \geq 1000$ , the empirical distribution constructed from  $\bar{\theta}^B = \{\hat{\theta}_1^B, \hat{\theta}_2^B, \dots, \hat{\theta}_N^B\}$  can be taken as the approximation to the distribution for the statistic of interest  $\hat{\theta}$ . Hence all the quantities of the statistic interest  $\hat{\theta}$  can be obtained since such a distribution contains all the information related to  $\hat{\theta}$ .

The above bootstrapping algorithm can be applied to the prediction distributions for the best estimates in stochastic claims reserving subject. England and Verrall (2007) contains an excellent review on the application. In addition, Lowe (1994), England and Verrall (1999) and Pinheiro (2003) are also good resources for more details. England and Verrall (2007) showed how bootstrapping can be used for recursive models, following on from the earlier papers (England and Verrall, 1999 and England 2002) which applied bootstrapping to the over-dispersed Poisson model.

It should be noted here that the Pearson residuals are commonly used rather than the original data in the Generalized Linear Model (GLM) framework. The Pearson residuals are required in order to scale the response variables in the GLM so that they are identically distributed. This is necessary because the bootstrap algorithm requires that the response variables are independent and identically distributed.

Other papers in the actuarial literature that consider triangles of dependent data include Taylor and McGuire (2007) and Kirschner et al (2008). It should be noted here that a model taking account of all information available could be potentially very valuable, even when the data is dependent in practice. The dependence makes it even difficult to calculate the prediction error theoretically. For these reasons, we believe that adopting bootstrap method for these models is worthy of investigation, particularly in order to obtain the predictive distribution of the estimates of outstanding liabilities.

## 4. Bootstrapping the Munich chain ladder model

This section considers bootstrapping the MCL model. In section 4.1 we describe the methodology and in section 4.2 we give the algorithm that is used.

### 4.1 Methodology

The method of bootstrapping stochastic chain ladder models can be seen in a number of different contexts. England and Verrall (2007) categorize the models as recursive and non-recursive and show how bootstrapping methods can be applied in either case. Since we are dealing with recursive models here, we follow England and Verrall and consider the observed development link ratios rather than the claims data themselves. In other words, for Mack's distribution-free chain ladder model the link ratios,  $F_{ij}$ , are randomly drawn against  $X_{ij}$ , noting that

$$E[F_{ij} | X_{ij}] = E\left[\frac{X_{i,j+1}}{X_{ij}} | X_{ij}\right] = f_j.$$

Here,  $X_{ij}$  is used to represent observed claims data in general. Note that the bootstrap estimates of the development factors  $f_j^B$  which are obtained by taking weighted averages of the bootstrapped observed link ratios,  $F_{ij}^B$ , use  $X_{ij}$  rather than  $X_{ij}^B$  as the weights.

However, this method cannot be simply extended to the MCL method, since this model is designed for dealing with two sets of correlated data, the paid and incurred claims. This means that it is not possible to use the normal bootstrap approach: the independence assumption cannot be met any more.

In order to address the problem of how to adapt the existing bootstrap approach in order to cope with the MCL method for dependent data sets, the consideration of the correlation is crucial. It should be noted that the correlation which is observed in the data represents real dependence between the paid and incurred claims, and the model is specifically designed because of this dependence. Therefore, it should remain unchanged within any re-sampling procedure. The straightforward solution is to draw samples pairwise so that the correlation between the two dependent original data sets will not be broken when generating a sampling distribution for a statistic of interest.

Obviously, when bootstrapping the recursive MCL method, the residuals of the paid and incurred link ratios are required instead of the raw data. The question arises of how to deal with these residuals in order to meet the requirement of not breaking the observed dependence between paid and incurred claims. The answer is to group all the four sets of residuals calculated in the MCL method, i.e. the paid and incurred development link ratios, the ratios of incurred over paid claims from the previous years and its inverse, individually. There are two reasons for this. Firstly, the paid claims (incurred claims) are correlated to the incurred to paid claims ratio (paid to incurred claims ratio) that are from only the previous year and doing this will preserve the required dependence. Secondly, the correlation coefficient of paid and incurred claims is equal to the correlation coefficient of those residuals, as stated in equations (2.6) and (2.10).

Thus, the case of the paid claims data, the triangles (which have the same dimensions) containing the residuals of the observed paid link ratios and the residuals of the ratios of incurred over paid (except the first column), are paired together. The same procedure is used for the incurred claims data. We do this for convenience, even though the ratios of the paid over incurred claims and the inverse, give the same information. Note that these ratios should remain unchanged when pairing them with paid and incurred claims with the same dimensions. The consequence of this is that all the four sets of

residuals for paid, incurred link ratios and the ratios of incurred over paid claims and the inverse are all be grouped together. (Note here that an alternative approach would be to group three sets of residuals: the residuals of the paid and incurred link ratios and either the residuals of the paid over incurred ratios or the inverse. This would produce the same results as grouping four sets of residuals as the residuals of paid over incurred ratios and the inverse can always be calculated from each other. However, it is simpler to group all the four sets as the calculation of the fourth set of residuals is naturally skipped in this case.)

This combines the four residuals triangles into one new triangle that consists of these grouped residuals and we name it as the grouped residual triangle. In each unit from this triangle of quadruples, the residuals are from the same accident and development year and correspond to paid and incurred claims. Therefore, the new triangle of quadruples contains all the information available and meanwhile maintains the observed dependence.

When applying bootstrapping, this triangle is considered as the observed sample. The new generated pseudo samples are obtained by random drawing, with replacement, from the triangle of quadruples.

The re-sampled incurred and paid triangles can be obtained by separating the pairs in the pseudo sample generated as above and backing out the residual definition. The MCL approach can then be applied to calculate all the statistics of interest for the re-sampled paid and incurred triangles, i.e. the correlation coefficient for paid and incurred, the paid and incurred development factors, the ratios of paid over incurred or the inverse, and the variances. Finally, adjusting the paid and incurred development factors by the correlation coefficient using the MCL approach, the bootstrapped MCL reserve estimates are obtained. This completes a single bootstrap iteration.

Again, the bootstrap method provides only the estimation error of the MCL method. In order to include the prediction error and estimate the predictive distribution for the MCL estimates of outstanding liabilities, an additional step is added at the end of each of the bootstrap iteration, which is to add the process variance to the estimation error.

Note that we apply the final simulation for the process variance to paid and incurred claims, independently. This is because, for a particular accident and development year, paid and incurred claims are actually independent. Under the assumptions of the MCL model, paid (incurred) claims are only correlated with previous incurred (paid) claims, and the forecasts produced by the bootstrapping will pick up this dependency.

In order to obtain a reasonable approximation to the predictive distribution, at least 1000 pseudo samples are required. For each of the pseudo samples, the row totals and overall total of outstanding liabilities are stored so that the sample means, sample variances and the empirical distributions can be calculated and plotted. They are taken as the approximations to the best estimates of outstanding liabilities, the prediction errors and the predictive distributions of the outstanding liabilities. Also, an estimate of any required percentile and confidence interval can be calculated from the predictive distribution.

In order to satisfy the assumption that the sample is identically distributed in the bootstrapping procedure, the Pearson residuals are calculated and used. As in England and Verrall (2007), we use the Pearson residuals of the observed development factors rather than those for the actual claims, since we are using recursive models. Note that a bootstrap bias correction is also needed, and the

simplest way to do this is to multiply the residuals by  $\sqrt{\frac{(n-j)}{(n-j-1)}}$ .

In addition to drawing the grouped sample for bootstrapping correlated data sets, there are also two other practical points that should be mentioned. The first is to note that the fitted values are obtained by starting from the final diagonal in each triangle and working backwards, by dividing by the

development factors. The second is that the zero residuals which appear in both triangles are also left out.

## 4.2 Algorithm

This section provides the algorithm, step by step, which is needed in order to implement the bootstrap process introduced in section 4.1,

- Apply the MCL method to both the cumulative paid and incurred claims data to obtain the residuals for all the four sets ratios, the paid, incurred link ratios, the paid over incurred ratios and the reverse. They can be obtained from following equations:

$$r_{ij}^P = \frac{F_{ij}^P - \hat{f}_j^P}{\hat{\sigma}_j^P} \sqrt{C_{ij}^P}, \quad r_{ij}^{Q^{-1}} = \frac{Q_{ij}^{-1} - \hat{q}_j^{-1}}{\hat{\tau}_j^P} \sqrt{C_{ij}^P}, \quad r_{ij}^I = \frac{F_{ij}^I - \hat{f}_j^I}{\hat{\sigma}_j^I} \sqrt{C_{ij}^I} \quad \text{and} \quad r_{ij}^Q = \frac{Q_{ij} - \hat{q}_j}{\hat{\tau}_j^I} \sqrt{C_{ij}^I}.$$

- Adjust the Pearson residual estimates by multiplying by  $\sqrt{\frac{(n-j)}{(n-j-1)}}$  to correct the bootstrap bias.
- Group all the four residuals, i.e.  $r_{ij}^P$ ,  $r_{ij}^{Q^{-1}}$ ,  $r_{ij}^I$  and  $r_{ij}^Q$  together. We write this as  $U_{ij} = \left\{ (r_{ij}^P), (r_{ij}^{Q^{-1}}), (r_{ij}^I), (r_{ij}^Q) \right\}$ .
- Start the iterative loop to be repeated N times ( $N \geq 1000$ ). This consists of the following steps:

1. Randomly sample from the grouped residuals with replacement, denoted as  $U_{ij}^B = \left\{ (r_{ij}^P)^B, (r_{ij}^{Q^{-1}})^B, (r_{ij}^I)^B, (r_{ij}^Q)^B \right\}$ , from the grouped triangle so that a pseudo sample of the grouped residuals is created.

2. Calculate the pseudo samples of the four triangles for the paid, incurred link ratios, the ratios of paid over incurred and the inverse by inverting the Pearson residuals definition as follows:

$$\left( F_{ij}^P \right)^B = \frac{\left( r_{ij}^P \right)^B \hat{\sigma}_j^P}{\sqrt{C_{i,j}^P}} + \hat{f}_j^P, \quad \left( Q_{ij}^{-1} \right)^B = \frac{\left( r_{ij}^{Q^{-1}} \right)^B \hat{\tau}_j^P}{\sqrt{C_{i,j}^P}} + \hat{q}_j^{-1},$$

and

$$(F_{ij}^I)^B = \frac{(r_{ij}^I)^B \hat{\sigma}_j^I}{\sqrt{C_{i,j}^I}} + \hat{f}_j^I, (Q_{ij})^B = \frac{(r_{ij}^Q)^B \hat{\tau}_j^I}{\sqrt{C_{i,j}^I}} + \hat{q}_j.$$

3. Calculate the  $C_{i,j}^P$ -weighted and  $C_{i,j}^I$ -weighted average of the bootstrap paid and incurred development factors as follows:

$$(\hat{f}_j^P)^B = \frac{\sum_{i=1}^{n-j} C_{i,j}^P (F_{ij}^P)^B}{\sum_{i=1}^{n-j} C_{i,j}^P}, (\hat{q}_j^{-1})^B = \frac{\sum_{i=1}^{n-j+1} C_{ij}^P (Q_{ij}^{-1})^B}{\sum_{i=1}^{n-j+1} C_{ij}^P}$$

and

$$(\hat{f}_j^I)^B = \frac{\sum_{i=1}^{n-j} C_{i,j}^I (F_{ij}^I)^B}{\sum_{i=1}^{n-j} C_{i,j}^I}, (\hat{q}_j)^B = \frac{\sum_{i=1}^{n-j+1} C_{ij}^I (Q_{ij})^B}{\sum_{i=1}^{n-j+1} C_{ij}^I}.$$

Note that the weights used here are from the original data sets and not from the pseudo samples.

4. Calculate the corresponding correlation coefficient for the re-sampled data using the pseudo residuals  $(r_{ij}^P)^B$ ,  $(r_{ij}^{Q^{-1}})^B$ ,  $(r_{ij}^I)^B$  and  $(r_{ij}^Q)^B$  as follows,

$$(\hat{\rho}^P)^B = \frac{\sum_{i,j} (r_{ij}^{Q^{-1}})^B (r_{ij}^P)^B}{\sum_{i,j} ((r_{ij}^{Q^{-1}})^B)^2} \text{ and } (\hat{\rho}^I)^B = \frac{\sum_{i,j} (r_{ij}^Q)^B (r_{ij}^I)^B}{\sum_{i,j} ((r_{ij}^Q)^B)^2}.$$

5. Calculate the variances for the bootstrap data as follows:

$$\left( (\hat{\sigma}_j^P)^2 \right)^B = \frac{1}{n-j-1} \sum_{i=1}^{n-j} C_{ij}^P \left( (F_{ij}^P)^B - (\hat{f}_j^P)^B \right)^2$$

$$\left( (\hat{\tau}_j^P)^2 \right)^B = \frac{1}{n-j-1} \sum_{i=1}^{n-j} C_{ij}^P \left( (Q_{ij}^{-1})^B - (\hat{q}_j^{-1})^B \right)^2$$

$$\left( (\hat{\sigma}_j^I)^2 \right)^B = \frac{1}{n-j-1} \sum_{i=1}^{n-j} C_{ij}^I \left( (F_{ij}^I)^B - (\hat{f}_j^I)^B \right)^2$$

$$\left( (\hat{\tau}_j^I)^2 \right)^B = \frac{1}{n-j-1} \sum_{i=1}^{n-j} C_{ij}^I \left( (Q_{ij})^B - (\hat{q}_j)^B \right)^2$$

Note that all the sums here are from 1 to  $n - j$  because the last diagonals of paid to incurred (and incurred to paid) are not included in the resampling procedure.

6. Calculate the bootstrap development factors adjusted by the correlation coefficient between the pseudo samples as follows:

$$\left(\hat{\lambda}_{ij}^P\right)^B = \left(\hat{f}_j^P\right)^B + \left(\hat{\rho}^P\right)^B \frac{\left(\hat{\sigma}_j^P\right)^B}{\left(\hat{\tau}_j^P\right)^B} \left(\left(Q_{ij}^{-1}\right)^B - \left(\hat{q}_j^{-1}\right)^B\right)$$

and

$$\left(\hat{\lambda}_{ij}^I\right)^B = \left(\hat{f}_j^I\right)^B + \left(\hat{\rho}^I\right)^B \frac{\left(\hat{\sigma}_j^I\right)^B}{\left(\hat{\tau}_j^I\right)^B} \left(\left(Q_{ij}\right)^B - \left(\hat{q}_j\right)^B\right),$$

for the re-sampled bootstrap paid and incurred run-off triangles, respectively.

7. Simulate a future payment for each cell in the lower triangle for both paid and incurred claims, from the process distribution with the mean and variance calculated from previous step. To do this, the following steps are required:

- For the one-step-ahead predictions from the leading diagonal, a normal distribution is assumed, i.e. for  $2 \leq i \leq n$ ,

$$X_{i,n-i+2}^P \sim Normal\left(\left(\hat{\lambda}_{i,n-i+1}^P\right)^B X_{i,n-i+1}^P, \left(\left(\hat{\sigma}_{n-i+1}^P\right)^2\right)^B X_{i,n-i+1}^P\right) \text{ for paid claims}$$

and

$$X_{i,n-i+2}^I \sim Normal\left(\left(\hat{\lambda}_{i,n-i+1}^I\right)^B X_{i,n-i+1}^I, \left(\left(\hat{\sigma}_{n-i+1}^I\right)^2\right)^B X_{i,n-i+1}^I\right) \text{ for incurred claims.}$$

- For the two-step-ahead predictions up to the n-step-ahead predictions, normal distributions are still assumed, but with the mean and variance calculated from previous prediction instead of the observed data, i.e. for  $3 \leq k \leq n$  and  $n - k + 3 \leq j \leq n$ ,

$$X_{kl}^P \sim Normal\left(\left(\hat{\lambda}_{i,l-1}^P\right)^B \hat{X}_{k,l-1}^P, \left(\left(\hat{\sigma}_{l-1}^P\right)^2\right)^B \hat{X}_{k,l-1}^P\right) \text{ for paid claims,}$$

and

$$X_{kl}^I \sim \text{Normal} \left( \left( \hat{\lambda}_{i,l-1}^I \right)^B \hat{C}_{k,l-1}^I, \left( \left( \hat{\sigma}_{l-1}^I \right)^2 \right)^B \hat{X}_{k,l-1}^I \right) \text{ for incurred claims.}$$

8. Sum the simulated payments in the future triangle by origin year and overall to give the origin year and total reserve estimates respectively.

9. Store the results, and return to the start of the iterative loop.



## 5. Examples

This section illustrates the bootstrapping approach to the MCL and uses two numerical examples to assess the results. The first example uses the data from Quarg and Mack (2004). Example 2 uses market data from Lloyd's which have been scaled for confidentiality reasons. These data relate to aggregated paid and incurred claims for two Lloyd's syndicates, categorized at risk level.

Example 1 is included in order to illustrate the results for the original set of data used by Quarg and Mack (2004). The purpose of example 2 is to illustrate that the MCL model does not necessarily provide better results in all situations. The indications from our results that it performs better when the data have less inherent variability and are less "jumpy".

### Example 1

In this section, we apply the bootstrapping methodology with 10,000 bootstrap simulations, to the data from Quarg and Mack (2004).

Tables 1 and 2 show the data. In order to illustrate the nature of the run-off of the data, Figures 1 and 2 are the plots of the data from Table 1 and 2, respectively. From Figures 1 and 2, it can be seen that the data are stable and not too much spread out.

Table 1  
Paid Claims from Quarg and Mack (2004)

	j=1	j=2	j=3	j=4	j=5	j=6	j=7
i=1	576	1804	1970	2024	2074	2102	2131
i=2	866	1948	2162	2232	2284	2348	
i=3	1412	3758	4252	4416	4494		
i=4	2286	5292	5724	5850			
i=5	1868	3778	4648				
i=6	1442	4010					
i=7	2044						

Table 2  
Incurred Claims from Quarg and Mack (2004)

	j=1	j=2	j=3	j=4	j=5	j=6	j=7
i=1	978	2104	2134	2144	2174	2182	2174
i=2	1844	2552	2466	2480	2508	2454	
i=3	2904	4354	4698	4600	4644		
i=4	3502	5958	6070	6142			
i=5	2812	4882	4852				
i=6	2642	4406					
i=7	5022						



Figure 1  
Paid Claims

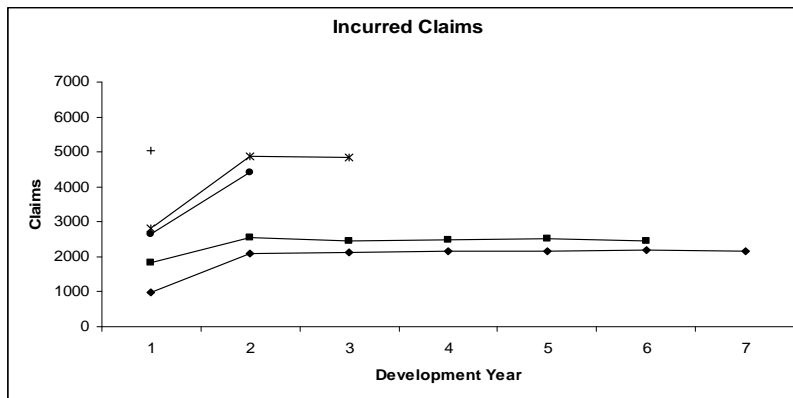


Figure 2  
Incurred Claims

The results of applying the bootstrap methodology described in this paper are shown below, and are compared with the results from the straightforward chain-ladder technique and Mack's method for the prediction errors. Table 3 shows that the theoretical MCL reserves (from Quarg and Mack) and the mean of the bootstrap distributions, together with the chain-ladder reserves when the triangles are considered separately. It can be seen that the bootstrap means are close to the theoretical values, for both the paid and incurred claims.

Table 3  
A Comparison of Methods for Reserves Projected on Paid and Incurred Claims

	Bootstrap		MCL		Mack	
	Paid	Incurred	Paid	Incurred	Paid	Incurred
i=1	0	43	0	43	0	43
i=2	37	94	35	96	32	97
i=3	109	131	103	135	158	88
i=4	277	321	269	326	331	277
i=5	299	296	289	302	407	191
i=6	657	651	646	655	919	465
i=7	5492	5646	5505	5606	4063	6380
Overall Total	6871	7182	6846	7163	5911	7540

Table 4 displays the bootstrap prediction error of the MCL reserves projected by both paid and incurred claims. Also shown are the prediction errors for the Mack method. It can be seen that the MCL prediction errors are lower than those of the Mack method.

Table 4  
A Comparison of Bootstrap Prediction Errors for MCL and CL Methods

	MCL		Mack	
	Paid	Incurred	Paid	Incurred
i=1	0	0	0	0
i=2	5	5	15	9
i=3	48	70	53	82
i=4	61	86	68	105
i=5	72	104	72	117
i=6	215	208	289	216
i=7	735	716	897	869
Overall Total	776	782	991	980

Since the purpose of the MCL method is to use more data to improve the estimation of the reserves, it is expected that the prediction errors should be lower than the Mack's model. This is confirmed for these data by Table 5, which shows that the prediction error, as a percentage of the reserve, for the MCL reserves is lower than the prediction error of CL reserves.

Table 5  
A Comparison of Bootstrap Prediction Errors% for MCL and CL Methods

	MCL		Mack	
	Paid	Incurred	Paid	Incurred
i=1	-	0%	-	0%
i=2	14%	5%	45%	9%
i=3	44%	53%	33%	93%
i=4	22%	27%	21%	38%
i=5	24%	35%	18%	61%
i=6	33%	32%	31%	46%
i=7	13%	13%	22%	14%
Total	11%	11%	17%	13%

In Figure 3, the distributions of the MCL and CL reserve projections for paid and incurred claims are plotted. Figure 3 shows that the paid and incurred best reserve estimates are very close when using MCL approach. In contrast, the paid and incurred best reserve estimates projected by the chainladder method, are much further apart. Furthermore, the CL method provides a much more spread out distribution than the MCL approach, in the case of both paid and incurred claims.

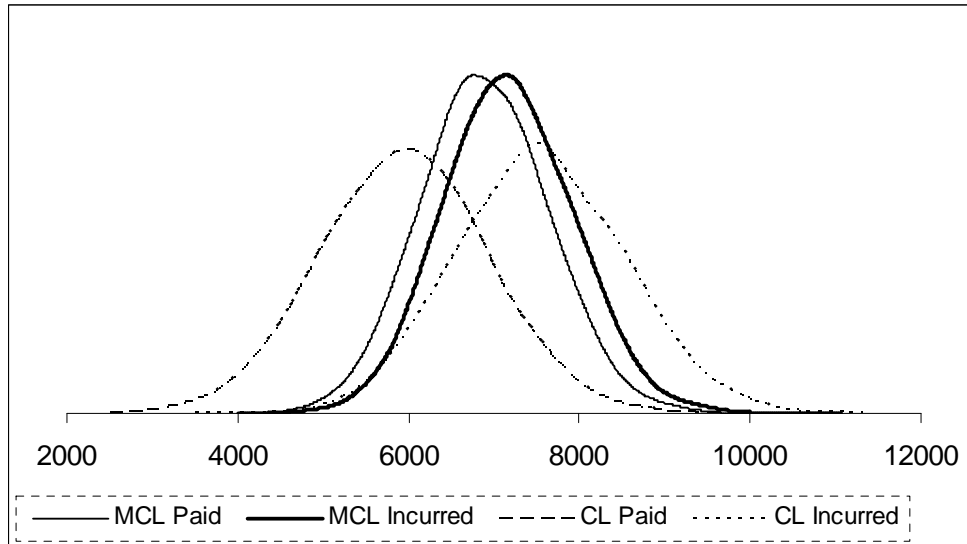


Figure 3  
 A Comparison of Predictive Distributions of Overall Reserves for CL and MCL Reserves for Paid and Incurred Claims

Example 2

In this section, a set of aggregate data from Lloyd’s syndicates is considered. In this case, the data are not as stable or well-behaved and the results are quite different. Tables 6 and 7 show the data, which are plotted in Figures 4 and 5. It can be seen from these figures that the data are much more unstable and more spread out compared with the previous two examples.

Table 6  
 Scaled Aggregate Paid Claims at Risk Level from Lloyd’s Market

	j=1	j=2	j=3	j=4	j=5	j=6	j=7	j=8	j=9	j=10
i=1	1139	5680	6906	7069	7205	7350	7421	7487	7506	7518
i=2	1101	6223	8038	8652	9064	9249	9343	9421	9455	
i=3	1215	8058	10593	11638	12346	12784	12978	13161		
i=4	949	5324	7608	8257	8719	8972	9103			
i=5	638	4107	6367	7099	7489	7586				
i=6	647	4166	6231	7029	7335					
i=7	1198	4660	7303	7791						
i=8	1194	6540	9251							
i=9	1248	6062								
i=10	1083									

Table 7  
 Scaled Aggregate Incurred Claims at Risk Level from Lloyd’s Market

	j=1	j=2	j=3	j=4	j=5	j=6	j=7	j=8	j=9	j=10
i=1	2170	6941	7709	7403	7452	7508	7514	7547	7555	7563
i=2	2184	7822	9182	9368	9445	9520	9508	9547	9585	
i=3	2759	10947	12649	12947	13090	13283	13328	13360		
i=4	1958	8398	9814	9800	9306	9370	9272			
i=5	1376	6177	7699	7799	7984	7904				
i=6	1464	5861	7546	7679	7687					
i=7	2405	6385	8151	8234						
i=8	3128	8772	10265							
i=9	2980	8045								
i=10	2722									



Figure 4  
Scaled Paid Claims from Lloyd's Market

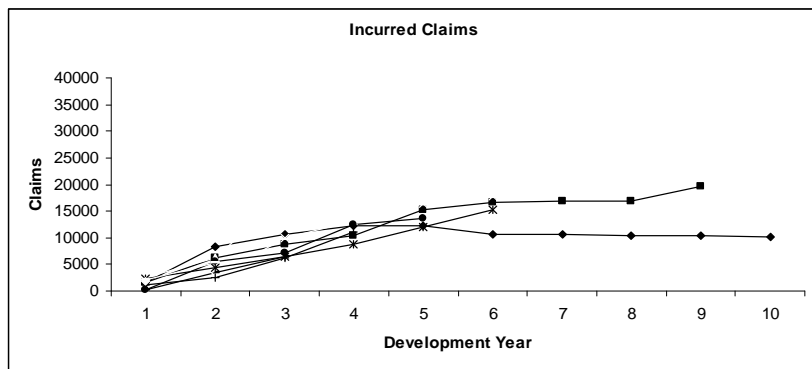


Figure 5  
Scaled Incurred Claims from Lloyd's Market

The MCL method still produces consistent ultimate loss predictions for this data set, as shown in Table 8. However, the prediction error contained in Table 9, estimated by the bootstrap MCL approach, appears not to appear to offer such an improvement as was seen in Example 1.

Table 8  
A Comparison of Methods for Reserves Projected on Paid and Incurred Claims

	Bootstrap		MCL		CL	
	Paid	Incurred	Paid	Incurred	Paid	Incurred
i=1	0	45	0	45	0	0
i=2	24	138	19	139	15	15
i=3	78	245	71	245	63	62
i=4	146	236	139	237	143	142
i=5	252	357	246	354	220	215
i=6	383	455	373	454	400	395
i=7	590	614	579	624	829	825
i=8	1345	1355	1318	1366	1850	1820
i=9	3758	3811	3707	3787	4081	4042
i=10	9874	9962	9740	9840	8765	8698
Overall Total	16451	17218	16192	17092	16367	16214

Table 9  
A Comparison of Bootstrap Prediction Errors for MCL and CL Methods

	MCL		CL	
	Paid	Incurred	Paid	Incurred
i=1	0	0	0	0
i=2	10	10	2	2
i=3	16	32	11	11
i=4	32	27	39	38
i=5	47	62	43	44
i=6	78	97	92	96
i=7	204	249	166	168
i=8	324	372	391	382
i=9	573	592	987	973
i=10	1762	1818	1940	1963
Overall Total	1911	1994	2277	2305

Table 10 shows a comparison of the prediction errors as a percentage of the reserve, and again it can be seen that results do not indicate that the MCL is a significant improvement over the CL model. The conclusion from this is that although the MCL method uses more data, and should be expected to produce lower prediction errors, this is not always the case in practice. We believe that the reason for this is that the assumptions made by the MCL method – the specific dependencies assumed – are not as strong as expected in this case. A conclusion from this is that the data have to be examined carefully before the MCL method is applied.

Table 10

A Comparison of Bootstrap Prediction Errors% for MCL and CL Methods using Scaled Data

	MCL		CL	
	Paid	Incurred	Paid	Incurred
i=1	-	-	-	-
i=2	43%	7%	69%	14%
i=3	21%	13%	27%	18%
i=4	22%	11%	28%	27%
i=5	19%	17%	20%	20%
i=6	20%	21%	23%	24%
i=7	35%	41%	20%	20%
i=8	24%	27%	21%	21%
i=9	15%	16%	23%	24%
i=10	18%	18%	22%	23%
Overall Total	12%	12%	14%	14%

This conclusion is reinforced by Figure 11, which shows the predictive distributions.

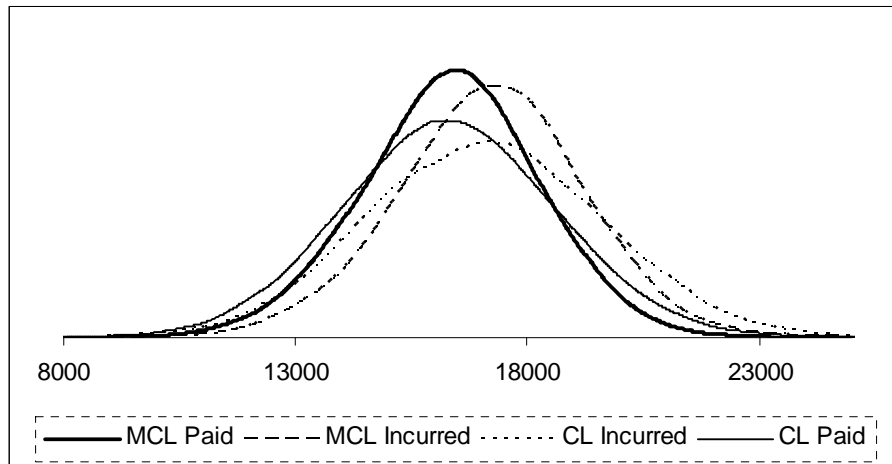


Figure 6

A Comparison of Predictive Distributions of CL and MCL Reserves predicted on Paid and Incurred Claims

## **6. Conclusion**

This paper has shown how a bootstrapping approach can be used to estimate the predictive distribution of outstanding claims for the MCL model. The model deals with two dependent data sets, the paid and incurred claims triangles, for general insurance reserving purposes. We believe that bootstrapping is well-suited for these purposes from a practical point of view, since it avoids complicated theoretical calculations and is easily implemented in a simple spreadsheet. This paper adapts the method by taking account of the dependence observed in the data and maintaining it by re-sampling pairwise.

A number of examples have been given, which show that the MCL model does not always produce superior results to the straightforward chain ladder model. As a consequence, we believe that it is important for the data to be carefully checked to test whether the dependency assumptions of the MCL model are valid for each data set before it is applied.



## References

- Efron, B. (1979). Bootstrap methods: another look at the jackknife. *Annals of Statistics* **7**, 1-26.
- Efron, B. and Tibshirani R.J. (1993). An introduction to the bootstrap. *New York: Chapman and Hall*.
- England, P.D. and Verrall, R.J. (1999). Analytic and bootstrap estimates of prediction errors in claims reserving. *Insurance: Mathematics and Economics* **25**, 281-293.
- England, P.D. (2002). Addendum to “Analytic and bootstrap estimates of prediction errors in claims reserving”. *Insurance: Mathematics and Economics* **31**, 461-466.
- England P.D. and Verrall, R.J. (2007). Predictive Distributions of Outstanding Liabilities in General Insurance. *Annals of Actuarial Science Institute of Actuaries*. **1**(2), 221-270.
- Kirschner, G.S., Kerley, C. and Isaacs, B. (2008). Two Approaches to Calculating Correlated Reserve Indications Across Multiple Lines of Business. *Variance*. **2** (1), 15-38.
- Lowe, J. (1994). A practical guide to measuring reserve variability using: Bootstrapping, Operational Time and a distribution free approach. *Proceedings of the 1994 General Insurance Convention, Institute of Actuaries and Faculty of Actuaries*.
- Mack, T. (1993). Distribution-free calculation of the standard error of chain ladder reserve estimates. *ASTIN Bulletin* **23** (2), 214-225.
- Pinheiro, PJR, Andrade e Silva, JM, Centeno, MLC (2003). Bootstrap methodology in claim reserving. *Journal of Risk and Insurance*, **70** (4), 701-714.
- Quarg, G. and Mack, T. (2004). Munich Chain Ladder. *Blatter DGVFM* **26**, 597–630.
- Taylor, G. and McGuire, G. (2007). A Synchronous Bootstrap to Account for Dependencies between Lines of Business in the Estimation of Loss Reserve Prediction Error. *North American Actuarial Journal*, **11** (3), 70-88.