



## City Research Online

### City, University of London Institutional Repository

---

**Citation:** Corsi, F., Audrino, F. and Reno, R. (2012). HAR Modeling for Realized Volatility Forecasting. In: Handbook of Volatility Models and Their Applications. (pp. 363-382). New Jersey, USA: John Wiley & Sons, Inc. ISBN 9780470872512

This is the accepted version of the paper.

This version of the publication may differ from the final published version.

---

**Permanent repository link:** <https://openaccess.city.ac.uk/id/eprint/4438/>

**Link to published version:** <http://dx.doi.org/10.1002/9781118272039.ch15>

**Copyright:** City Research Online aims to make research outputs of City, University of London available to a wider audience. Copyright and Moral Rights remain with the author(s) and/or copyright holders. URLs from City Research Online may be freely distributed and linked to.

**Reuse:** Copies of full items can be used for personal research or study, educational, or not-for-profit purposes without prior permission or charge. Provided that the authors, title and full bibliographic details are credited, a hyperlink and/or URL is given for the original metadata page and the content is not changed in any way.

# CHAPTER 1

---

## HAR MODELING FOR REALIZED VOLATILITY FORECASTING

---

- 1 Fulvio Corsi (University of St. Gallen), Francesco Audrino (University of St. Gallen),
- 2 Roberto Renò (University of Siena)

3

### 4 1.1 INTRODUCTION

5 The importance of financial market volatility has generated a very large literature  
6 in which volatility dynamics has been modelled in order to take into account its  
7 most salient features: clustering, slowly decaying auto-correlation, and non-linear  
8 responses to previous market information of a different type.

9 In the literature, these phenomena have typically given rise to models in which  
10 volatility is generated by a long memory process, characterized by fractional inte-  
11 gration and an hyperbolic decay of the autocorrelation function. However, in this  
12 chapter we follow an alternative direction which generates very similar stylized facts  
13 for volatility series using the superposition of short memory frequencies. This frame-  
14 work turns out to be easier to handle, with a straightforward economic interpretation  
15 and an excellent fit to the data.

1 Originally, this framework was inspired by the work of [66] and [41]. We view  
2 volatility persistence as the result of the aggregation of the heterogeneous components  
3 present in the financial market (the so called Heterogeneous Market Hypothesis). Het-  
4 erogeneity among participants in the financial market may be of a different nature:  
5 differences in the endowments, institutional constraints, risk profiles, information,  
6 geographical locations, and so on. The proposed model concentrates on the het-  
7 erogeneity that originates from (or materializes in) the difference in time horizons.  
8 Typically, a financial market is composed of participants having a large spectrum  
9 of trading frequencies. At one end of the spectrum are dealers, market makers,  
10 and intraday speculators with an intraday trading horizon. At the other end, there  
11 are institutional investors, such as insurance companies and pension funds trading  
12 much less frequently and possibly for larger amounts. The key idea is that agents  
13 with different time horizons perceive, react to, and cause different types of volatility  
14 components.

15 In addition, it has been recently observed that volatility over longer time intervals  
16 has stronger influence on volatility over shorter time intervals than conversely.<sup>1</sup> This  
17 can be economically explained by noticing that for short-term traders the level of  
18 long-term volatility matters because it determines the expected future size of trends  
19 and risk. The overall pattern that emerges can be statistically described by a cascade of  
20 heterogeneous volatility components (generated by the action of market participants  
21 of different natures) from low frequencies to high frequencies.

22 This idea has been pursued in [34], who proposed an additive cascade model  
23 of realized volatility aggregated at different time horizons. This cascade of het-  
24 erogeneous volatility components leads to a simple AR-type model in the realized  
25 volatility that considers volatilities realized over different time horizons and is thus  
26 called *Heterogeneous Auto-Regressive (HAR)*. In spite of its simplicity and the fact  
27 that it does not formally belong to the class of long-memory models, the HAR model  
28 for realized volatility is able to reproduce the volatility persistence revealed by the  
29 empirical analysis on financial markets. The combination of ease of implementation  
30 with a very accurate fit of financial volatility time series has made the HAR models  
31 very popular in the financial econometrics community.

32 In this chapter we survey the HAR model for realized volatility forecasting and  
33 its extensions. After reviewing some stylized facts of realized volatility we present  
34 the derivation and possible interpretations of the heterogeneous structure of the HAR  
35 model. We then discuss different extensions of the univariate HAR model aiming at  
36 modeling the forecasting power of jumps, leverage effect and structural breaks.

37 In particular, we provide evidence for the contention that jumps have signifi-  
38 cant impact on future realized volatility and that the impact of negative returns (the  
39 so-called *leverage effect*) is highly persistent and also presents a HAR structure,  
40 confirming the view of the existence of an heterogeneous structure in the financial  
41 market. Moreover, we also provide empirical evidence of the existence of other non-  
42 linear effects of past market information on volatility on the top of the leverage effect

<sup>1</sup>See [66], [4] and [61].

1 by introducing a flexible HAR-type model able to explicitly take into account struc-  
 2 tural breaks and regime-switches. Finally, we provide a brief review of multivariate  
 3 models for realized variance-covariance matrix dynamics.

## 4 1.2 STYLIZED FACTS ON REALIZED VOLATILITY

5 Summarized from the vast literature on the empirical analysis of financial markets,  
 6 the main characteristics of financial markets volatility are:

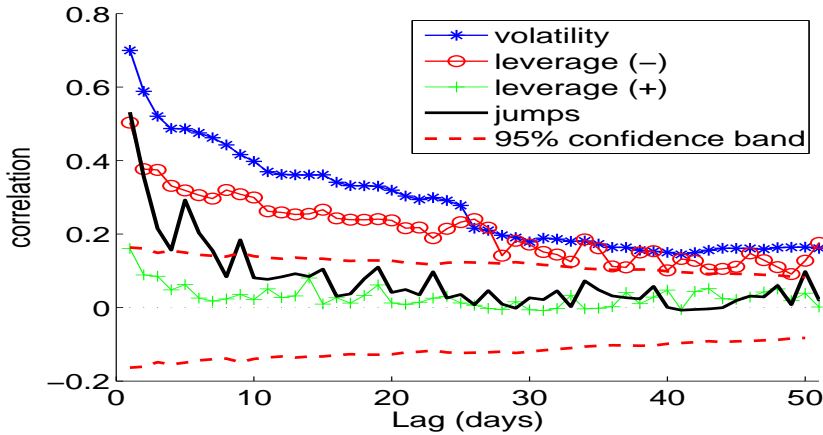
- 7 1. Long range dependence: (hourly, daily, weekly and monthly) realized volatility  
 8 displays significant autocorrelations even at very long lags. This property is  
 9 often ascribed to a long memory data generating process. In this chapter, we  
 10 take another approach by using a superposition of autoregressive processes  
 11 with different time scales.
- 12 2. Leverage effect: it is empirically observed that returns are negatively corre-  
 13 lated with (realized) volatility. In particular, volatility bursts are more likely  
 14 associated with negative past returns.
- 15 3. Jumps: financial prices are subject to abrupt variations. Jumps are not very  
 16 frequent and practically unpredictable, but they have a strong positive impact  
 17 on future volatility.

18 To illustrate these stylized facts of realized volatility ( $RV_t$ ), let us now consider  
 19 historical data on the S&P 500 stock index over the period 1982-2009. Figure 1.1 plots  
 20  $Corr(RV_t, Z_{t-h})$ , i.e. the correlation between  $RV_t$  and  $Z_{t-h}$ , for  $h = 1, \dots, 50$ .  $Z_t$   
 21 corresponds either to  $RV_t$ , negative daily returns ( $r_t^- = \min(r_t, 0)$ , where  $r_t$  is the  
 22 return on day  $t$ ), positive returns ( $r_t^+ = \max(r_t, 0)$ ) or jumps ( $J_t$ ). More details on the  
 23 data and the estimation of  $RV_t$  and  $J_t$  are given in Section 1.3.  $Corr(RV_t, RV_{t-h})$   
 24 is the AutoCorrelation Function (ACF) of  $RV_t$ . Figure 1.1 clearly suggests the  
 25 presence of long-memory in the realized volatility. This figure also suggests that  
 26 while past positive daily returns ( $r_{t-h}^+$ ) are not significantly correlated with  $RV_t$ , past  
 27 negative returns ( $r_{t-h}^-$ ) have a significant impact on futures volatilities, and negative  
 28 shocks take a long time to die out (which might also be viewed as long-memory).  
 29 Interestingly, jumps seem also to have a positive impact on future values of  $RV_t$ ,  
 30 although their effect decays at a faster rate than  $RV_t$  and  $r_{t-h}^-$ . This motivates the  
 31 analysis in the following sections.

## 32 1.3 HETEROGENEITY AND VOLATILITY PERSISTENCE

33 The appearance of long range dependence might be due to a genuine long-memory  
 34 data generating process or, alternatively, it can be explained as a combination of  
 35 different short memory processes (as discussed further below). Although a true long  
 36 memory process requires the aggregation of an infinite number of short memory  
 37 processes (as shown by [52]), an approximated long memory process (practically

## Correlation between realized volatility and past realized volatility, negative/positive returns and jumps.



**Figure 1.1**  $\text{Corr}(RV_t, Z_{t-h})$  ( $h = 1, \dots, 50$ ) for the S&P 500 series for the period January 1990 to February 2009.  $Z_t$  corresponds either to  $RV_t$ , negative daily returns ( $r_t^- = \min(r_t, 0)$ , where  $r_t$  is the return on day  $t$ ), positive returns ( $r_t^+ = \max(r_t, 0)$ ) or jumps ( $J_t$ ). The displayed 95% confidence bands (dashed lines) are computed with the generalized Bartlett's formula of [46].

- 1 indistinguishable from a true one) can be obtained by aggregating only few hetero-
- 2 geneous time scales ([58]).
- 3 The need for multiple components in the volatility process has been advocated
- 4 by (among others) [66], [43], [21], [14], and [26] and has been reconsidered by
- 5 making use of the concept of an additive cascade of realized volatility aggregated
- 6 over different time horizons in [34]. In what follows, we briefly review this latter
- 7 approach.

We assume that the state variable  $X$  (typically the log price) is driven by the stochastic process:

$$dX_t = \mu_t dt + \sigma_t dW_t + c_t dN_t, \quad (1.1)$$

where  $\mu_t$  is predictable,  $\sigma_t$  is càdlàg and  $N_t$  is a doubly stochastic Poisson process<sup>2</sup> whose intensity is an adapted stochastic process  $\lambda_t$ , the random times of the corresponding jumps are  $(\tau_j)_{j=1, \dots, N_T}$  and  $c_j$  are iid adapted random variables measuring the size of the jump at time  $\tau_j$ . In practice, e.g. for risk management purposes, we

<sup>2</sup>We could also consider a wider class of jumps, such as Lévy, in the case in which they have a finite quadratic variation process.

are interested in forecasting the quadratic variation defined as:

$$\tilde{\sigma}_t^2 = \int_t^{t+1} \sigma_s^2 ds + \sum_{t \leq \tau_j \leq t+1} e_{\tau_j}^2,$$

1 where the time unit is one day.

This quantity is not directly observable and therefore has to be estimated. Let us denote by  $\hat{V}_t$  a consistent estimator of  $\tilde{\sigma}_t^2$ , that is:

$$\log \tilde{\sigma}_t^2 = \log \hat{V}_t + \omega_t,$$

2 where  $\omega_t$  is iid noise.<sup>3</sup> In the ideal case of no microstructure noise,  $RV_t$  is the most  
 3 natural choice for  $\hat{V}_t$ . In the presence of microstructure noise, other estimators are  
 4 preferable such as the two-scale estimator proposed by [74], the realized kernels  
 5 method of [13], the pre-average approach of [55], or the multi-scales Discrete Sine  
 6 Transform estimator (DST) of [40]. In our empirical analysis in Section 1.6, we use  
 7 the DST estimator.

Consider the aggregated values of  $\log \hat{V}_t$ , defined as:

$$\log \hat{V}_t^{(n)} = \frac{1}{n} \sum_{j=1}^n \log \hat{V}_{t-j+1} \quad (1.2)$$

and assume two different time scales, of length  $n_1$  and  $n_2$ , with  $n_1 > n_2$  (e.g. weekly  
 and daily). For the largest time scale, assume that  $\tilde{\sigma}_t^2$ , once aggregated as in (1.2), is  
 determined by:

$$\log \tilde{\sigma}_{t+n_1}^{2,(n_1)} = c^{(n_1)} + \beta^{(n_1)} \log \hat{V}_t^{(n_1)} + \varepsilon_{t+n_1}^{(n_1)} \quad (1.3)$$

8 where  $\varepsilon_t^{(n_1)}$  is an iid random variable with mean zero and unit variance which is  
 9 independent on the estimation error  $\omega_t$ , and  $c^{(n_1)}$  and  $\beta^{(n_1)}$  are unknown parameters.

This can be explained by assuming that the level of short-term volatility does not  
 affect the trading strategies of long-term traders.<sup>4</sup> On the other hand, for short-term  
 traders the level of long-term volatility matters because it determines the expected  
 future size of trends and risk. Hence, the shorter time scale ( $n_2$ ) is assumed to be  
 influenced by the expected future value of the largest time scale ( $n_1$ ), so that:

$$\log \tilde{\sigma}_{t+n_2}^{2,(n_2)} = c^{(n_2)} + \beta^{(n_2)} \log \hat{V}_t^{(n_2)} + \delta^{(n_2)} \mathbf{E}_t \left[ \log \tilde{\sigma}_{t+n_1}^{2,(n_1)} \right] + \varepsilon_{t+n_2}^{(n_2)}, \quad (1.4)$$

where  $\varepsilon_t^{(n_2)}$  is an iid random variable with mean zero and unit variance, independent  
 on  $\varepsilon_t^{(n_1)}$  and  $\omega_t$  and  $\delta^{(n_2)}$  is a constant. The economic interpretation of this mech-  
 anism is that each volatility component corresponds to a market component whose

<sup>3</sup>The model can also be specified in terms of  $\hat{V}_t$  and for  $\sqrt{\hat{V}_t}$ , as in [34] [3] and [38]. However, the log specification has the double advantage of avoiding imposing positivity constraints and making the distribution closer to normality, see e.g. [51].

<sup>4</sup>The HAR model would hold even if we allow the short-term volatility to affect the long-term volatility.

expectation on next period volatility is formed looking at, beyond the current realized volatility value, the forecast on the longer time horizon. The basic idea is that agents with different time horizons perceive, react to, and cause different types of volatility components. By substitution, this gives:

$$\log \widehat{V}_{t+n_2}^{(n_2)} = c + \beta^{(n_2)} \log \widehat{V}_t^{(n_2)} + \beta^{(n_1)} \log \widehat{V}_t^{(n_1)} + \varepsilon_t; \quad (1.5)$$

1 where  $\varepsilon_t$  is iid noise depending on  $\varepsilon_t^{(n_1)}$ ,  $\varepsilon_t^{(n_2)}$ ,  $\omega_t$ . The model (1.5) can be easily  
 2 extended to  $d$  horizons of length  $n_1 > n_2 > \dots > n_d$ . Typically, three components  
 3 are used with length  $n_1 = 22$  (monthly),  $n_2 = 5$  (weekly),  $n_3 = 1$  (daily).

4 The HAR model is then a parsimonious AR model reparameterized by imposing  
 5 different sets of restrictions (one for each volatility component) on the autoregressive  
 6 coefficients of the AR model. Each set of restrictions takes the form of equality  
 7 constraints among the autoregressive coefficients constituting a given time horizon,  
 8 so that once combined they lead to a step function for the autoregressive weights.  
 9 In this sense, the HAR can be related to the MIDAS regression of [47], [48], and  
 10 [45], although the standard MIDAS with the estimated Beta function lag polynomial  
 11 cannot reproduce the HAR step function weights.

12 In practice, the HAR model provides a simple and flexible method to fit the  
 13 partial autocorrelation function of the empirical data with a step function which has  
 14 predefined tread depth and estimated (by simple OLS) rise height. More generally,  
 15 however, nothing prevents the use of different types of kernel in the aggregation of  
 16  $\widehat{V}_t$  instead of the rectangular one used in the simple moving average; in this case we  
 17 would no longer have a step function for the coefficients but a more general function  
 18 given by a mixture of kernels (e.g. mixture of exponentials for exponentially weighted  
 19 moving averages) which can still be easily estimated by simple OLS.

20 Even if the HAR model does not formally belong to the class of long memory  
 21 processes, it fits the persistence properties of financial data as well as (and potentially  
 22 better than) true long memory models, such as the fractionally integrated one, which,  
 23 however, are much more complicated to estimate and to deal with (see the review of  
 24 [10]). For these reasons, the HAR model has been employed in several applications  
 25 in the literature, of which an incomplete list is: [47] and [45] compare this model  
 26 with the MIDAS model; [3] use an extension of this model to forecast the volatility  
 27 of stock prices, foreign exchange rates and bond prices; [31] implement it for risk  
 28 management with VaR measures; [20] use it to analyze the risk-return tradeoff; [18]  
 29 use it to study the relation between intraday serial correlation and volatility.

In the literature dealing with HAR models, it is commonly assumed that the innovations of the log realized volatility are identically and independently distributed. However, volatility clustering in the residuals of the HAR model (as well as in other realized volatility models) are often observed in practical applications. The presence of time-varying conditional distributions in realized volatility models can distort risk assessment and, thus, impair risk management analysis. To account for the observed volatility clustering in realized volatility [37] extend the HAR model by explicitly modelling the volatility of realized volatility. The proposed model adds GARCH type innovations to the standard HAR model, giving rise to an HAR-GARCH(p, q)

model which, with the three commonly used frequencies, reads:

$$\log \widehat{V}_{t+1}^{(1)} = c + \beta^{(1)} \log \widehat{V}_t^{(1)} + \beta^{(5)} \log \widehat{V}_t^{(5)} + \beta^{(22)} \log \widehat{V}_t^{(22)} + \sqrt{h_t} \varepsilon_t \quad (1.6)$$

$$h_t = \omega + \sum_{j=1}^q a_j u_{t-j}^2 + \sum_{j=1}^p b_j h_{t-j} \quad (1.7)$$

$$\varepsilon_t | \Omega_{t-1} \sim iid(0, 1), \quad (1.8)$$

- 1 where  $\Omega_{t-1}$  denotes the  $\sigma$ -field generated by all the information available up to time  
2  $t - 1$  and  $u_t = \sqrt{h_t} \varepsilon_t$ .

### 3 1.3.1 Genuine long memory or superposition of factors?

4 Assessing whether volatility persistence is generated by a data-generating process  
5 with genuine long memory or from a superposition of factors as illustrated above may  
6 appear an impossible task. Clearly, the two possibilities might generate very similar  
7 empirical features which would make them indistinguishable. In this case, analytical  
8 tractability becomes the most important feature to take into account. However, as we  
9 discuss here, some specific data generating processes can be ruled out on the basis of  
10 the statistical features of the realized volatility time series.

Such an investigation is carried out in [39]. They propose two competing  
continuous-time models for the volatility dynamics which belong to the class (1.1).  
The first one is a genuine long-memory model with constant volatility-of-volatility:

$$d \log \sigma_t = k(\omega - \log \sigma_t) dt + \eta dW_t^{(d)}, \quad (1.9)$$

11 where  $dW_t^{(d)}$  is a *fractional Brownian motion* with memory parameter  $d \in [0, 0.5]$ ,  
12 see [33]. The value  $d = 0$  corresponds to the standard Brownian motion, while  
13 higher  $d$  correspond to higher memory in the time series. Model (1.9) (or its discrete  
14 counterpart) is usually advocated as the source of long memory in volatility, even  
15 if it is very difficult to deal with mathematically and econometrically. It is impor-  
16 tant to note that in this model persistence comes both from the mean-reverting term  
17  $k(\omega - \log \sigma_t)$  and from the fractional Brownian motion  $dW_t^{(d)}$ . [39] estimate model  
18 (1.9) via indirect inference, using the HAR model as auxiliary model. The advantage  
19 of indirect inference is that, beyond providing an estimate of the parameters  $k, \omega, \eta$ ,  
20 and  $d$ , it provides overall statistics of the goodness-of-fit of the model. They find un-  
21 ambiguously that the model (1.9) is unable to reproduce the time series of volatilities  
22 in the S&P500 index.

The second model they test is an affine two-factor model:

$$\begin{aligned} \sigma_t^2 &= V_t^1 + V_t^2 \\ dV_t^1 &= \kappa_1(\omega_1 - V_t^1) + \eta_1 \sqrt{V_t^1} dW_t^1 \\ dV_t^2 &= \kappa_2(\omega_2 - V_t^2) + \eta_2 \sqrt{V_t^2} dW_t^2, \end{aligned} \quad (1.10)$$



1 where  $W^1$  and  $W^2$  are two independent Brownian motions. In this case, even  
 2 imposing the restriction  $\omega_1 = \omega_2$  to identify the model<sup>5</sup>, the two-factor model is  
 3 perfectly able to reproduce the statistical features of the volatility of the S&P500  
 4 index. The obtained estimates of  $\hat{\kappa}_1 = 2.138$  and  $\hat{\kappa}_2 = 0.006$  imply the presence  
 5 of a fast mean-reverting factor and a slowly mean-reverting factor with a half-life of  
 6 nearly 166 days, which is usually suggested in the empirical literature on stochastic  
 7 volatility and option pricing.

8 Clearly, a more complicated long-memory model (e.g. with two factors) might  
 9 also reproduce the volatility time series, so it would be wrong to conclude that these  
 10 results rule out the presence of genuine long memory in the volatility series. However,  
 11 these results show that the superposition of volatility factors is able to reproduce the  
 12 long range dependence displayed by realized volatility, for which a genuine long  
 13 memory data generating process is unnecessary (and certainly not mathematically  
 14 convenient).

15 These results can also help explaining the good performance of multi-factor model  
 16 in the option pricing, see e.g. [16]. They also suggest that two factors might be  
 17 unnecessary if the volatility dynamics is specified directly with a model similar to  
 18 HAR: an attempt in this direction is the study proposed by [36] where a realized  
 19 volatility option-pricing model is developed based on the HAR structure. Such a  
 20 model is found to provide good pricing performances.

## 21 1.4 HAR EXTENSIONS

### 22 1.4.1 Jumps measures and their volatility impact

The importance of jumps in financial econometrics is rapidly growing. Recent  
 research focusing on jump detection and volatility measuring in presence of jumps  
 includes [12], [62], [59], [56], [2], [1], [29], [63] and [24]. [3] suggested that the  
 continuous volatility and jump component have different dynamics and should thus  
 be modelled separately. In this section, we closely follow [38]<sup>6</sup> using the C-Tz test<sup>6</sup>  
 for jumps detection, and  $\text{TBPV}_t$ , i.e. the threshold bipower variation, to estimate the

<sup>5</sup>The structural model (1.10) has 6 free parameters while, the auxiliary three components HAR model has 5 (including the parameter of the variance of the innovations).

<sup>6</sup>The C-Tz statistics is defined as:

$$\text{C-Tz}_t = \delta^{-\frac{1}{2}} \frac{(\text{RV}_t - \text{C-TBPV}_t) \cdot \text{RV}_t^{-1}}{\sqrt{\left(\frac{\pi^2}{4} + \pi - 5\right) \max\left\{1, \frac{\text{C-TTriPV}_t}{(\text{TBPV}_t)^2}\right\}}}, \quad (1.11)$$

where  $\delta$  is the time between high-frequency observations,  $\text{C-TBPV}_t$  is a correction of (1.12) devised to be unbiased under the null and  $\text{C-TTriPV}$  is a similar estimator of integrated quarticity  $\int_t^{t+1} \sigma_s^4 ds$ ; see [38] for details.

continuous part of integrated volatility, defined as:

$$\text{TBPV}_t = \frac{\pi}{2} \sum_{j=0}^{n-2} |\Delta_{t,j} X| \cdot |\Delta_{t,j+1} X| I_{\{|\Delta_{t,j} X|^2 \leq \vartheta_{j-1}\}} I_{\{|\Delta_{t,j+1} X|^2 \leq \vartheta_j\}}, \quad (1.12)$$

where  $I_{\{\cdot\}}$  is the indicator function and  $\vartheta_t$  is a threshold function which we estimate as in [38]. It can be proved that, under model (1.1),  $\text{TBPV}_t \rightarrow \int_t^{t+1} \sigma_s^2 ds$  as the interval between observations goes to zero. This continuous volatility estimator has much better finite sample properties than standard bipower variation and provides more accurate jump tests, which allows for a corrected separation of continuous and jump components. For this purpose, we set a confidence level  $\alpha$  and estimate the jump component as:

$$J_t = I_{\{C\text{-Tz} > \Phi_\alpha\}} \cdot (\widehat{V}_t - \text{TBPV}_t)^+, \quad (1.13)$$

where  $\Phi_\alpha$  is the value of the standard Normal distribution corresponding to the confidence level  $\alpha$ , and  $x^+ = \max(x, 0)$ . The corresponding continuous component is defined as:

$$C_t = \widehat{V}_t - J_t, \quad (1.14)$$

- 1 which is equal to  $\widehat{V}_t$  if there are no jumps in the trajectory, while it is equal to  $\text{TBPV}_t$
- 2 if a jump is detected by the C-Tz statistics.

As for  $\log \widehat{V}_t$  we define aggregated values of  $\log C_t$  as

$$\log C_t^{(n)} = \frac{1}{n} \sum_{j=1}^n \log C_{t-j+1}.$$

For the aggregation of jumps, given the presence of a large number of zeros in the series, we prefer to simply take the sum of the jumps over the window  $h$  instead of the average, i.e.:

$$J_t^{(n)} = \sum_{j=1}^n J_{t-j+1}.$$

- 3 Consistent with the above section, in the volatility cascade we assume that  $C_t$  and
- 4  $J_t$  enter separately at each level of the cascade, that is:

$$\begin{aligned} \log \widetilde{\sigma}_{t+n_1}^{2,(n_1)} &= c^{(n_1)} + \alpha^{(n_1)} \log(1 + J_t^{(n_1)}) + \beta^{(n_1)} \log C_t^{(n_1)} + \varepsilon_{t+n_1}^{(n_1)} \\ \log \widetilde{\sigma}_{t+n_2}^{2,(n_2)} &= c^{(n_2)} + \alpha^{(n_2)} \log(1 + J_t^{(n_2)}) + \beta^{(n_2)} \log C_t^{(n_2)} \\ &\quad + \delta^{(n_2)} \mathbf{E}_t \left[ \log \widetilde{\sigma}_{t+1}^{2,(n_1)} \right] + \varepsilon_{t+n_2}^{(n_2)} \end{aligned}$$

- 5 originating the model:

$$\begin{aligned} \log \widehat{V}_{t+n_2}^{(n_2)} &= c + \alpha^{(n_1)} \log(1 + J_t^{(n_1)}) + \alpha^{(n_2)} \log(1 + J_t^{(n_2)}) \\ &\quad + \beta^{(n_2)} \log C_t^{(n_2)} + \beta^{(n_1)} \log C_t^{(n_1)} + \varepsilon_t. \end{aligned} \quad (1.15)$$

- 6 Note that we use  $\log(1 + J_t)$  instead of  $\log J_t$  since  $J_t$  can be zero. This model has
- 7 been introduced as the HAR-CJ model by [3].

### 1.4.2 Leverage effects

It is well known that volatility tends to increase more after a negative shock than after a positive shock of the same magnitude: this is the so-called leverage effect (see [30, 27, 50] and more recently [19]).

Given the stylized facts presented in Section 1.2, it is then natural to extend the Heterogeneous Market Hypothesis approach to leverage effects. We assume that realized volatility reacts asymmetrically not only to previous daily returns but also to past weekly and monthly returns. We model such heterogeneous leverage effects by introducing asymmetric return-volatility dependence at each level of the cascade considered in the above section. Define daily returns  $r_t = X_t - X_{t-1}$  and aggregated returns as:

$$r_t^{(n)} = \frac{1}{n} \sum_{j=1}^n r_{t-j+1}.$$

To model the leverage effect at different frequencies, we define  $r_t^{(n)-} = \min(r_t^{(n)}, 0)$ . We assume that integrated volatility is determined by the following cascade:

$$\begin{aligned} \log \tilde{\sigma}_{t+n_1}^{2,(n_1)} &= c^{(n_1)} + \beta^{(n_1)} \log \widehat{V}_t^{(n_1)} + \gamma^{(n_1)} r_t^{(n_1)-} + \varepsilon_{t+n_1}^{(n_1)} \\ \log \tilde{\sigma}_{t+n_2}^{2,(n_2)} &= c^{(n_2)} + \beta^{(n_2)} \log \widehat{V}_t^{(n_1)} + \gamma^{(n_2)} r_t^{(n_2)-} + \delta^{(n_2)} \mathbf{E}_t \left[ \log \tilde{\sigma}_{t+n_1}^{2,(n_1)} \right] + \varepsilon_{t+n_2}^{(n_2)} \end{aligned}$$

where  $\gamma^{(n_1,2)}$  are constants. This now gives:

$$\log \widehat{V}_{t+n_2}^{(n_2)} = c + \beta^{(n_2)} \log \widehat{V}_t^{(n_2)} + \beta^{(n_1)} \log \widehat{V}_t^{(n_1)} + \gamma^{(n_2)} r_t^{(n_2)-} + \gamma^{(n_1)} r_t^{(n_1)-} + \tilde{\varepsilon}_t. \quad (1.16)$$

We then postulate that leverage effects influence each market component separately, and that they appear aggregated at different horizons in the volatility dynamics.

Combining heterogeneity in realized volatility, leverage, and jumps, we construct the *Leverage Heterogeneous Auto-Regressive with Continuous volatility and Jumps* (LHAR-CJ) model. As is common in practice, we use three components for the volatility cascade: daily, weekly and monthly. Hence, the proposed model reads:

$$\begin{aligned} \log \widehat{V}_{t+h}^{(h)} &= c + \beta^{(d)} \log C_t + \beta^{(w)} \log C_t^{(5)} + \beta^{(m)} \log C_t^{(22)} \\ &+ \alpha^{(d)} \log(1 + J_t) + \alpha^{(w)} \log(1 + J_t^{(5)}) + \alpha^{(m)} \log(1 + J_t^{(22)}) \\ &+ \gamma^{(d)} r_t^- + \gamma^{(w)} r_t^{(5)-} + \gamma^{(m)} r_t^{(22)-} + \varepsilon_t^{(h)}. \end{aligned} \quad (1.17)$$

Model (1.17) nests the other models introduced in the chapter. When  $\alpha^{(d,w,m)} = \gamma^{(d,w,m)} = 0$  and  $C_t = \widehat{V}_t$ , the model reduces to the HAR model (1.5). When  $\gamma^{(d,w,m)} = 0$ , we get the HAR-CJ model (1.15).

Model (1.17) can be estimated by OLS with the Newey-West covariance correction for serial correlation. In order to make multiperiod predictions, we will estimate the model considering the aggregated dependent variable  $\log \widehat{V}_{t+h}^{(h)}$  with  $h$  ranging from 1 to 22, i.e. from one day to one month.

### 1.4.3 General non-linear effects in volatility

Another question of interest is to investigate whether the leverage effects introduced in the previous section are the only relevant non-linear (in that case asymmetric) behaviors present in the realized volatility dynamics in response to past shocks in the market and, more in general, in the whole (macro)economy. In fact, in the last five years several empirical studies published in the literature applied different (parametric and non-parametric) methodologies to the problem of estimating and forecasting realized volatilities, covariances, and correlations dynamics. These showed that they are subject to structural breaks and regime-switches driven by shocks of a different nature: see, among others, [65], [69], and [7].

To investigate this, we generalize the LHAR-CJ model introduced in (1.17) to estimate leverage effects. We propose a tree-structured local HAR-CJ model (Tree HAR-CJ) which is able to take into account both long-memory and possible general non-linear effects in the (log-) realized volatility dynamics. Tree-structured models belong to the class of threshold regime models, where regimes are characterized by some threshold for the relevant predictor variables. The class of tree-structured GARCH models was introduced by [5] in the financial volatility literature, and was generalized recently to capture simultaneous regime shifts in the first and second conditional moment dynamics of returns series (see, for example, [8]). The proposed model reads:

$$\log \widehat{V}_{t+h}^{(h)} = \mathbf{E}_t[\log \widehat{V}_{t+h}^{(h)}] + \varepsilon_t^{(h)}, \quad (1.18)$$

where  $\mathbf{E}_t[\cdot]$  denotes (as usual) the conditional expectation given the information up to time  $t$ . The conditional dynamics of the realized (log-) volatilities are given by:

$$\begin{aligned} \mathbf{E}_t[\log \widehat{V}_{t+h}^{(h)}] = & \\ & \sum_{j=1}^k \left[ c_j + \beta_j^{(d)} \log C_t + \beta_j^{(w)} \log C_t^{(5)} + \beta_j^{(m)} \log C_t^{(22)} \right. \\ & + \alpha_j^{(d)} \log(1 + J_t) + \alpha_j^{(w)} \log(1 + J_t^{(5)}) + \alpha_j^{(m)} \log(1 + J_t^{(22)}) \\ & \left. + \gamma_j^{(d)} r_t + \gamma_j^{(w)} r_t^{(5)} + \gamma_j^{(m)} r_t^{(22)} \right] I_{[\mathbf{X}_t^{\text{pred}} \in \mathcal{R}_j]}, \end{aligned} \quad (1.19)$$

where  $\theta = (c_j, \alpha_j^{(d,w,m)}, \beta_j^{(d,w,m)}, \gamma_j^{(d,w,m)}, j = 1, \dots, k)$  is a parameter vector which parameterizes the local HAR-CJ dynamics in the different regimes,  $k$  is the number of regimes (endogenously estimated from the data), and  $I_{[\cdot]}$  is the identity function that defines regime-shifts.<sup>7</sup>

The regimes are characterized by partition cells  $\mathcal{R}_j$  of the relevant predictor space  $G$  of  $\mathbf{X}_t^{\text{pred}}$ :

$$G = \bigcup_{j=1}^k \mathcal{R}_j, \quad \mathcal{R}_i \cap \mathcal{R}_j = \emptyset \quad (i \neq j).$$

<sup>7</sup>The drastic 0-1 rule to define regime-switches can be relaxed to allow for more smooth regime transitions using, for example, a logistic function instead of the identity function; see [65].

1 For modeling (log-)realized volatilities, the relevant predictor variables in  $\mathbf{X}_t^{\text{pred}}$   
 2 are past-lagged realized volatilities (considering the estimated ones, as well as the  
 3 continuous and the jump parts alone), and past-lagged returns of the underlying  
 4 instrument under investigation to allow explicitly for leverage effects. In taking  
 5 volatility cascades into account, all such predictor variables are considered at three  
 6 different time horizons: daily, weekly, and monthly. We also consider time as an  
 7 additional predictor variable to investigate the relevance of structural breaks in time.<sup>8</sup>

8 To completely specify the conditional dynamics given in (1.19) of the realized  
 9 volatilities, we determine the shape of the partition cells  $\mathcal{R}_j$ , which are admissible in  
 10 the Tree HAR-CJ model. Similar to the standard classification and regression trees  
 11 (CART) procedure (see [25]), the only restriction we impose is that regimes must be  
 12 characterized by (possibly high-dimensional) rectangular cells of the predictor space,  
 13 with edges determined by thresholds on the predictor variables. Such partition cells  
 14 are practically constructed using the idea of binary trees. Introducing this restriction  
 15 has two major advantages: it allows a clear interpretation of the regimes in terms  
 16 of relevant predictor variables, and it also allows an estimation of the model using  
 17 large-dimensional predictor spaces  $G$ .

18 The Tree HAR-CJ model introduced above can be estimated for any fixed sequence  
 19 of partition cells using quasi-maximum likelihood (QML). The choice of the best  
 20 partition cells (that is, splitting variables and threshold values) involves a model  
 21 choice procedure for non-nested hypotheses. Similar to CART, the model selection  
 22 of the splitting variables and threshold values can be performed using the idea of  
 23 binary trees (for all details, see [8], Section 2.3 and Appendix A). Within any data-  
 24 determined tree structure, the best model is selected using information criteria or a  
 25 more formal sequence of statistical tests to circumvent identification problems (see  
 26 [65]).

## 27 1.5 MULTIVARIATE MODELS

We now turn to a multivariate setting, in which a  $\mathbb{R}^N$ -valued stochastic process  $X_t$   
 evolves over time according to the dynamics:

$$dX_t = \mu_t dt + \Sigma_t dW_t + dJ_t$$

28 where  $\mu_t$  is an  $\mathbb{R}^N$ -valued predictable process,  $\Sigma_t$  an  $\mathbb{R}^{N \times N}$ -valued càdlàg process,  
 29  $W_1, \dots, W_N$  is an  $N$ -dimensional Brownian motion and  $dJ_t$  is a  $\mathbb{R}^N$  valued jump  
 30 process. Modeling and forecasting asset returns (conditional) covariance matrix  
 31  $\Sigma_t$  is pivotal to many prominent financial problems such as asset allocation, risk  
 32 management and option pricing. However, the multivariate extensions of the realized  
 33 volatility approach pose a series of difficult challenges that are still the subject of  
 34 active research.

<sup>8</sup>The predictor set can be easily expanded to incorporate information included in any other relevant  
 (endogenous or exogenous) explanatory variable.

1 First, in addition to the common microstructure effect biasing realized volatility  
 2 measures (i.e. bid-ask spread, price discreteness, etc.), the so called non-synchronous  
 3 trading effect ([60]) strongly affects the estimation of the realized covariance and  
 4 correlation measures. In fact, since the sampling from the underlying stochastic  
 5 process is different for different assets, assuming that two time series are sampled  
 6 simultaneously when, indeed, the sampling is non-synchronous gives rise to the  
 7 non-synchronous trading effect. As a result, standard covariance and correlation  
 8 measures constructed by imposing an artificially regularly spaced time series of  
 9 high frequency data will possess a bias toward zero which increases as the sam-  
 10 pling frequency increases.<sup>9</sup> This effect of a consistent drop of the absolute value of  
 11 correlations when increasing the sampling frequency was first reported by [44] and  
 12 hence called the Epps effect. To solve this problem, various approaches have been  
 13 proposed in the literature: incorporate lead and lag cross returns in the estimator  
 14 ([70], [32],[22], [9]), avoid any synchronization by directly using tick-by-tick data  
 15 ([42],[54],[53],[67],[71],[72],[35]), multivariate realized kernel ([11]), and the mul-  
 16 tivariate Fourier method ([68, 64]). Given the high level of persistence presents in  
 17 both realized covariances and correlations, the HAR model has also been employed  
 18 to model the univariate time series dynamics of realized correlations as in [7].

19 Second, when realized volatility and covariance measures apply any kind of cor-  
 20 rection for microstructure effects, the resulting variance-covariance matrix is not  
 21 guaranteed to be positive semi-definite (psd). Exceptions are the multivariate real-  
 22 ized kernel with refresh time of [11] and the multivariate Fourier method of [64].  
 23 In both cases, however, the frequency at which all the realized variance-covariance  
 24 estimates are computed are dictated by the asset having the lowest liquidity, hence  
 25 discarding, in practice, a considerable amount of information especially for the most  
 26 liquid assets.

27 Third, in order to have a valid multivariate forecasting model, it is necessary to  
 28 construct a dynamic specification for the stochastic process of the realized covariance  
 29 matrix which produces symmetric and psd covariance matrix predictions. In the  
 30 still relatively scarce but growing literature on multivariate modeling of realized  
 31 volatilities, three types of approaches have been proposed thus far: modeling the  
 32 Cholesky factorization of  $\Sigma$  ([28]), its matrix log transformation ([17]), and directly  
 33 modeling the dynamics of  $\Sigma$  as a Wishart Autoregressive model (WAR) ([23] and  
 34 [57]).

35 Fourth, as with all other types of multivariate models, the multivariate modeling of  
 36 realized volatilities is prone to the curse of dimensionality in the number of parameters  
 37 of the model. This problem is made particularly severe by the high persistence of  
 38 the variance-covariance processes, which requires consideration of a large number  
 39 of variance-covariance elements in the conditioning set. To precisely deal with this

<sup>9</sup>This is because, in addition to the problem of zero returns, any difference in the time stamps between the last ticks for the two assets in each regularly spaced interval will correspond to a portion of the cross product returns that will not be accounted for in the computation of the covariance. This is itself due to the fact that the returns corresponding to this time difference will be ascribed to two different time intervals and hence no longer matched in the cross product summation.

1 problem, the HAR modelling approach has been also adopted in the multivariate  
 2 framework and, because of its simplicity, is often preferred to multivariate long  
 3 memory models.

For instance, after decomposing the realized covariance matrix into Cholesky factors  $P_t$ , where

$$P_t' P_t = \Sigma_t,$$

4 [28] apply both a vector fractionally integrated model (where the same fractional  
 5 difference parameter is imposed) and an HAR specification with scalar coefficients to  
 6 the vector of the lower triangular elements of the Cholesky factorization (i.e. to  $U_t =$   
 7  $vech(P_t)$ ). In their HAR specification, they also include the biweekly frequency, in  
 8 addition to the commonly used daily, weekly, and monthly frequencies. The authors  
 9 find that, in comparison with the more involved vector fractionally integrated model,  
 10 "the HAR specification shows very good forecasting ability".<sup>10</sup>

11 For  $\Sigma_t$ , [17] chose the bi-power covariance of [15], but the same principle can be  
 12 applied to any other covariance estimators. Then they apply a multivariate extension  
 13 of the HAR-RV model to the principal components of  $\log m(\Sigma_t)$ .<sup>11</sup> They also include  
 14 negative past returns to model asymmetric responses and other prediction variables  
 15 that have been shown to forecast stock returns (such as interest rates, dividend yields,  
 16 and credit spreads). In their empirical application they find that "lagged principal  
 17 components of realized weekly and monthly bi-power covariation have a strong  
 18 predictive power" on the covariance matrix dynamics of size-sorted stock returns.

19 [23] propose capturing the persistence properties in the realized variances and co-  
 20 variances with a Wishart-based generalization of the HAR model. The HAR structure  
 21 is then obtained by direct temporal aggregation of the daily covariance matrices over  
 22 different window lengths. The authors propose a restricted parametrization of their  
 23 Wishart HAR-type model that is able to deal with large asset cross-section dimen-  
 24 sions. In a four dimensional application using two US treasury bills and two exchange  
 25 rates they show that the restricted specification of the model provides results similar  
 26 to the fully parameterized model for variance forecasting and risk evaluation.

27 In the same direction, [57] propose a Wishart specification having HAR type com-  
 28 ponents (i.e. defined as sample averages of past realized covariance matrices). Two  
 29 types of time-varying Wishart models are considered by the authors: one in which  
 30 the components affect the scale matrix of the Wishart distribution in a multiplicative  
 31 way and the second with the components entering in an additive way. Both models  
 32 are estimated using standard Bayesian techniques with Markov Chain Monte Carlo  
 33 (MCMC) methods for posterior simulation given that the posterior distribution is  
 34 unknown. In their empirical analysis on five assets stock prices, the additive spec-

<sup>10</sup>The authors find a slightly superior performance of the fractionally integrated model at a longer horizon. However, this result could be due to the authors' choice to neglect, in the long horizon direct forecast, the forecasting contribution coming from the higher frequency volatility components.

<sup>11</sup>If  $\Sigma_t$  is a  $(N \times N)$  psd matrix, we have by the spectral decomposition theorem that  $\Sigma_t = E_t \Lambda_t E_t'$ , where the columns of the  $(N \times N)$  orthonormal matrix  $E_t$  correspond to the eigenvectors of  $\Sigma_t$  and  $\Lambda_t$  is a  $(N \times N)$  diagonal matrix whose diagonal elements are equal to the  $N$  eigenvalues of  $\Sigma_t$ . Then the matrix logarithm of  $\Sigma_t$ , denoted  $\log m(\Sigma_t)$ , is defined by  $\log m(\Sigma_t) = E_t \log(\Lambda_t) E_t'$ . Recall that the logarithm of a diagonal matrix is a diagonal matrix whose diagonal elements are taken in  $\log$ .

1 ification showed better performance in terms of density forecasts of returns up to 3  
 2 months ahead.

### 3 1.6 APPLICATIONS

4 The purpose of this section is first to empirically analyze the performance of the  
 5 LHAR-CJ model (1.17) and then investigate the presence of other non-linear effects  
 6 in the dynamics of the S&P500 futures volatilities in addition to the leverage effects.

7 Our data set covers a long time span of almost 20 years of high frequency data for  
 8 the S&P 500 futures from January 1990 to February 2009, for a total of 4,766 daily  
 9 observations. In order to reduce the impact of microstructure effects, the estimator for  
 10 the daily volatility  $\hat{V}_t$  is computed with the multi-scales DST estimator of [40]. The  
 11 multi-scales DST estimator combines the DST orthogonalization of the volatility  
 12 signal from the microstructure noise with a multi-scales estimator similar to that  
 13 proposed by [73]<sup>12</sup> but constructed with a simple regression based approach.

14 The (significant) jump component  $J_t$  in (1.13) and the continuous volatility  $C_t$  in  
 15 (1.14) are computed at the 5-minute sampling frequency (corresponding to 84 returns  
 16 per day). The confidence level  $\alpha$  in (1.13) is set to 99.9%. All the quantities of  
 17 interest are computed on an annualized base.

18 The results of the estimation of the LHAR-CJ on the S&P500 sample from January  
 19 1990 to February 2009, with  $h = 1, 5, 10, 22$  are reported in Table 1.1, together with  
 20 their statistical significance, evaluated with the Newey-West robust t-statistic with 44  
 21 lags.

22 As usual, all the coefficients of the three continuous volatility components are  
 23 positive and highly significant. We observe that the coefficient measuring the impact  
 24 of monthly volatility on future daily volatility (i.e. 0.203) is more than twice as big  
 25 as the one of daily volatility on future monthly volatility (i.e. 0.105). This finding  
 26 is consistent with the hierarchical asymmetric propagation of the volatility cascade  
 27 formalized in Section 1.3.

28 A similar hierarchical structure, although less pronounced, is present in the im-  
 29 pact of jumps on future volatility. The daily and weekly jump components remain  
 30 highly significant and positive especially when modelling realized volatility at short  
 31 horizons. In addition, their impact declines when the frequency at which RV is  
 32 modelled declines. The jumps aggregated at the monthly level, however, turn out to  
 33 be insignificant on the considered data set.

34 Interestingly, estimation results for model (1.17) reveal the strong significance  
 35 (with the economically expected negative sign) of the negative returns at (almost) all  
 36 frequencies, which unveils the presence of a heterogeneous structure in the leverage  
 37 effect as well. In fact, the daily volatility is significantly affected, not only by the  
 38 daily negative return of the day before (the well know leverage effect) but also of  
 39 the week and of the month before. This result suggests that the market aggregates

<sup>12</sup>A generalization of the two-scales estimator of [74] to many realized volatilities computed at different frequencies.



## S&amp;P500 LHAR in-sample regression

Variable	One day	One week	Two weeks	One month
$c$	0.765* (11.416)	0.847* (7.888)	0.954* (6.327)	1.096* (4.941)
$C$	0.248* (13.169)	0.172* (11.720)	0.132* (10.182)	0.105* (8.215)
$C^{(5)}$	0.317* (11.210)	0.299* (8.516)	0.285* (7.027)	0.243* (5.110)
$C^{(22)}$	0.230* (8.577)	0.315* (7.951)	0.361* (6.720)	0.398* (5.497)
$J$	0.016* (3.135)	0.012* (2.914)	0.012* (3.606)	0.010* (2.654)
$J^{(5)}$	0.058* (4.573)	0.055* (3.330)	0.047* (2.282)	0.027 (1.171)
$J^{(22)}$	0.010 (0.544)	0.011 (0.413)	0.008 (0.222)	0.028 (0.522)
$r^-$	-0.736* (-8.620)	-0.526* (-10.154)	-0.411* (-8.226)	-0.337* (-5.436)
$r^{(5)-}$	-1.070* (-4.602)	-0.685* (-3.054)	-0.739* (-3.491)	-0.644* (-2.685)
$r^{(22)-}$	-0.899* (-2.116)	-1.111 (-1.809)	-0.985 (-1.411)	-0.668 (-0.778)

**Table 1.1** OLS estimates of the LHAR-CJ model (1.17), for S&P500 futures from January 1990 to February 2009, (4, 766 observations). The LHAR-CJ model is estimated with  $h = 1$  (one day),  $h = 5$  (one week),  $h = 10$  (two weeks) and  $h = 22$  (one month). The significant jumps are computed using a critical value of  $\alpha = 99.9\%$ . Reported in parenthesis are  $t$ -statistics based on Newey-West correction.

1 information at the daily, weekly and monthly levels and reacts to shocks happening  
 2 at these three levels/frequencies. These findings thus further confirm the views of the  
 3 Heterogeneous Market Hypothesis.

4 To evaluate the performance of the LHAR-CJ model, we compare it with the  
 5 standard HAR (with only heterogeneous volatility) and the HAR-CJ model (with  
 6 heterogeneous jumps) on the basis of a genuine out-of-sample analysis. For the  
 7 out-of-sample forecast of  $\widehat{V}_t$  on the  $[t, t + h]$  interval we keep the same forecasting  
 8 horizons (one day, one week, two weeks and one month) and re-estimate the model  
 9 at each day  $t$  on a moving window of length 2500 days. Table 1.2 reports the  
 10 out-of-sample forecasts of the different models evaluated on the basis of the  $R^2$   
 11 of Mincer-Zarnowitz forecasting regressions and the Diebold-Mariano test for the  
 12 out-of-sample Root Mean Square Error (RMSE).<sup>13</sup>

13 The superiority of the HAR-CJ model over the HAR model is mild, since it has  
 14 to be ascribed preeminently to days which follow a jump, and thus on a very small  
 15 sample; conditioning on days following the occurrence of a jump would show a  
 16 sharper improvement (as shown in [38]). However, the superiority of the LHAR-CJ  
 17 model at all horizons, with respect to the HAR (and the HAR-CJ model) is much  
 18 stronger, validating the importance of including both the heterogeneous leverage  
 19 effects and jumps in the forecasting model.

20 In the second part of our empirical analysis, we estimate the Tree HAR-CJ model  
 21 introduced in (1.19) to investigate whether additional non-linear effects are present  
 22 in the dynamics of the S&P500 futures volatilities on the top of the leverage effect  
 23 and whether the explicit modeling of structural breaks and regime-shifts is able to  
 24 improve the accuracy of the estimates and forecasts. To simplify the interpretations  
 25 and reduce the number of parameters in the model, we assume that the cascade is  
 26 present only in the volatility continuous component  $C_t$  (i.e. we set the parameters  
 27  $\alpha_j^{(w,m)}$  and  $\gamma_j^{(w,m)}$ ,  $j = 1, \dots, k$ , to zero). Estimated coefficients, as well as the  
 28 estimated regimes, are reported in Table 1.3 for  $h = 1$ . Classical model-based  
 29 bootstrapped standard errors are given in parentheses.

30 Table 1.3 shows that almost all coefficients in the local dynamics of realized  
 31 volatilities are highly significant, with a couple of interesting exceptions. As dis-  
 32 cussed previously, the leverage effect is found to be the most important asymmetry  
 33 and yields the first binary split in the procedure. The optimal threshold is found  
 34 to be around zero, highlighting the different reaction of realized volatilities to past  
 35 positive and negative S&P 500 returns. A second relevant non-linear behavior of  
 36 realized volatility dynamics is found in response to past low and moderate vs. high  
 37 (continuous part) volatilities when past S&P 500 returns are negative. In fact, the  
 38 threshold value  $d_2 = 5.34$  corresponds to the 70% quantile of the estimated  $\log C_t$   
 39 series.

40 In these three regimes, local volatility dynamics show significant differences. In  
 41 particular, it is worth mentioning the following two results: First, past lagged S&P

<sup>13</sup>Diebold-Mariano test should be applied with care when competing models are nested, however, [49] showed that if the window size is bounded (e.g., computed over a fixed moving window as in our setting) the test is still valid.

## S&amp;P500 out-of-sample performances

Variable	One day	One week	Two weeks	One month
HAR	0.8073	0.8351	0.8162	0.7573
HAR-CJ	0.8107 (1.994)	0.8397 (1.808)	0.8188 (0.835)	0.7597 (0.115)
LHAR-CJ	0.8238 (4.663)	0.8487 (2.854)	0.8279 (2.023)	0.7651 (1.169)

**Table 1.2**  $R^2$  of Mincer-Zarnowitz regressions for out-of-sample forecasts for horizons  $h = 1$  (one day),  $h = 5$  (one week),  $h = 10$  (two weeks) and  $h = 22$  (one month) of the S&P500 from January 1990 to February 2009 (4,766 observations, the first 2500 observations are used to initialize the models). The forecasting models are the standard HAR, the HAR-CJ and the LHAR-CJ model. In parentheses is reported the Diebold-Mariano test for the out-of-sample RMSE with respect to the standard HAR model.

## Tree HAR-CJ estimates and regimes

Regime structure	Local parameters						
	$\mathcal{R}_j$	$c_j$	$\alpha_j^{(d)}$	$\beta_j^{(d)}$	$\beta_j^{(w)}$	$\beta_j^{(m)}$	$\gamma_j^{(d)}$
$r_t \leq 0.05,$ $\log C_t \leq 5.34$		0.6577 (0.0411)	0.0574 (0.0115)	0.1864 (0.0345)	0.4060 (0.0428)	0.2578 (0.0373)	-0.1987 (0.0253)
$r_t \leq 0.05,$ $\log C_t > 5.34$		0.5627 (0.0299)	-0.0095 (0.0133)	0.3924 (0.0382)	0.4187 (0.0420)	0.0783 (0.0387)	-0.1330 (0.0136)
$r_t > 0.05$		0.1854 (0.0516)	0.0604 (0.0076)	0.3260 (0.0271)	0.3962 (0.0404)	0.2335 (0.0297)	-0.0055 (0.0115)

**Table 1.3** Tree HAR-CJ estimated parameters and regimes for the S&P 500 realized (log-) volatilities with  $h = 1$ . The sample period is from January 1990 to February 2009, for a total of 4,766 daily observations.  $r_t$  and  $\log C_t$  denote the past-lagged daily S&P 500 return and past-lagged daily (log-) continuous components of the realized volatility, respectively. Model-based bootstrap standard errors computed using 1,000 replications are given in parentheses.

1 500 returns are significant only in the regimes where they are negative, yielding to  
2 an increase in the realized volatilities. When past lagged S&P 500 returns are posi-  
3 tive (last regime) their impact in estimating future volatility dynamics is negligible.  
4 Second, the impact of jumps highly changes depending on the regime in which they  
5 occur: it is positive and significant in regimes characterized by (somehow) stable  
6 financial markets (regimes 1 and 3), yielding to an increase of realized volatility.  
7 By contrast, in times of market turbulence (measured by past negative returns and  
8 high past volatilities), jumps are found to have no particular impact in driving future  
9 realized volatility dynamics. These interesting results confirm and extend previous  
10 empirical findings shown in this section.

11 Similarly to what has been shown above for the LHAR-CJ model, in a preliminary  
12 series of forecasting experiments for  $h$  equal to one, the Tree HAR-CJ model has  
13 been found to be able to significantly improve the out-of-sample performance of the  
14 classical HAR and HAR-CJ models. A more detailed and complete investigation  
15 of how the introduction of regimes (threshold-based or of a Markovian type) may  
16 improve predictions in a general HAR setting is left for the future.

## 17 1.7 CONCLUDING REMARKS AND AREAS FOR FUTURE RESEARCH

18 By projecting a dynamic process on its own past values aggregated over different time  
19 horizons, the HAR model is a general and flexible approach to fit the autocorrelation  
20 function of any persistent process in a very simple and tractable way. In this chapter  
21 we have briefly surveyed the nature, construction, and properties of the HAR class  
22 of models for realized volatility estimation and prediction. We discussed some  
23 of the extensions of the standard HAR model that have been recently proposed to  
24 explicitly take into account the predictive power of jumps, leverage effects, and other  
25 non-linearities (i.e. structural breaks and regime switches driven by the different  
26 sources acting on the financial market) for the time-varying dynamics of realized  
27 volatilities. We also reviewed some recent studies generalizing the HAR model  
28 for predicting univariate realized volatilities to the multivariate setting of realized  
29 covariance matrices. This is a fast-growing field and the list of references will no  
30 doubt need updating in the near future.

31 In our review of the extant literature on HAR models a number of topics stand  
32 out as possible avenues for future research. The most obvious, and perhaps difficult,  
33 is to generalize the univariate flexible HAR model with jumps, leverage effects,  
34 and other non-linear behaviors due to regime changes to the multivariate context.  
35 Existing models do not take these effects into account and are not well-designed  
36 to deal with (possibly) high-dimensional realized covariance matrices. What is  
37 needed are flexible yet parsimonious multivariate HAR-type extensions that remain  
38 computationally feasible in large dimensions. This task may be accomplished using  
39 recent techniques coming from the computational statistics community, similar to  
40 what was done ten years ago in [6] for the estimation of a flexible volatility matrix in  
41 a multivariate GARCH setting.

## 1 REFERENCES

- 2 1. Y. Aït-Sahalia and J. Jacod. Testing for jumps in a discretely observed process. *Annals*  
3 *of Statistics*, 37:184–222, 2009.
- 4 2. Y. Aït-Sahalia and L. Mancini. Out of sample forecasts of quadratic variation. *Journal of*  
5 *Econometrics*, 147(1):17–33, 2008.
- 6 3. T. Andersen, T. Bollerslev, and F. X. Diebold. Roughing it up: Including jump components  
7 in the measurement, modeling and forecasting of return volatility. *Review of Economics*  
8 *and Statistics*, 89:701–720, 2007.
- 9 4. A. Arneodo, J.F. Muzy, and D. Sornette. Casual cascade in stock market from the  
10 "infrared" to the "ultraviolet". *European Physical Journal B*, 2:277, 1998.
- 11 5. F. Audrino and P. Bühlmann. Tree-structured garch models. *Journal of the Royal*  
12 *Statistical Society, Series B*, 63:727–744, 2001.
- 13 6. F. Audrino and P. Bühlmann. Volatility estimation with functional gradient descent for  
14 very high-dimensional financial time series. *Journal of Computational Finance*, 6(3):1–  
15 26, 2003.
- 16 7. F. Audrino and F. Corsi. Modeling tick-by-tick realized correlations. *Computational*  
17 *Statistics & Data Analysis*, 54:2373–2383, 2010.
- 18 8. F. Audrino and F. Trojani. Estimating and predicting multivariate volatility regimes in  
19 global stock markets. *Journal of Applied Econometrics*, 21:345–369, 2006.
- 20 9. F.M. Bandi and J.R. Russell. Realized covariation, realized beta and microstructure noise.  
21 Unpublished paper, Graduate School of Business, University of Chicago, 2005.
- 22 10. A. Banerjee and G. Urga. Modelling structural breaks, long memory and stock market  
23 volatility: An overview. *Journal of Econometrics*, 129(1-2):1–34, 2005.
- 24 11. O. E. Barndorff-Nielsen, P. R. Hansen, A. Lunde, and N. Shephard. Multivariate realised  
25 kernels: Consistent positive semi-definite estimators of the covariation of equity prices  
26 with noise and non-synchronous trading. Working Paper Series, 2010.
- 27 12. O. E. Barndorff-Nielsen and N. Shephard. Power and bipower variation with stochastic  
28 volatility and jumps. *Journal of Financial Econometrics*, 2:1–48, 2004.
- 29 13. O.E. Barndorff-Nielsen, P.R. Hansen, A. Lunde, and N. Shephard. Designing realized  
30 kernels to measure the ex post variation of equity prices in the presence of noise. *Econo-*  
31 *metrica*, 76(6):1481–1536, 2008.
- 32 14. O.E. Barndorff-Nielsen and N. Shephard. Non-Gaussian Ornstein–Uhlenbeck-based  
33 models and some of their uses in financial economics. *Journal of the Royal Statisti-*  
34 *cal Society: Series B (Statistical Methodology)*, 63(2):167–241, 2001.
- 35 15. O.E. Barndorff-Nielsen and N. Shephard. Measuring the impact of jumps in multivariate  
36 price processes using bipower covariation. 2005.
- 37 16. D. Bates. Post-'87 crash fears in the S&P 500 futures option market. *Journal of Econo-*  
38 *metrics*, 94:181–238, 2000.
- 39 17. G.H. Bauer and K. Vorkink. Forecasting multivariate realized stock market volatility.  
40 *Journal of Econometrics*, 2010.
- 41 18. S. Bianco, F. Corsi, and R. Renò. Intraday LeBaron effects. *Proceedings of the National*  
42 *Academy of Science of the USA*, 106:11439–11443, 2009.

- 1 19. T. Bollerslev, J. Litvinova, and G. Tauchen. Leverage and volatility feedback effects in  
2 high-frequency data. *Journal of Financial Econometrics*, 4(3):353, 2006.
- 3 20. T. Bollerslev, G. Tauchen, and H. Zhou. Expected stock returns and variance risk premia.  
4 *Review of Financial Studies*, 22(11):4463–4492, 2008.
- 5 21. T. Bollerslev and J.H. Wright. Volatility forecasting, high-frequency data, and frequency  
6 domain inference. *Review of Economics and Statistics*, 83:596–602, 2001.
- 7 22. T. Bollerslev and B. Y. B. Zhang. Measuring and modeling systematic risk in factor  
8 pricing models using high-frequency data. *Journal of Empirical Finance*, 10(5):533–558,  
9 2003.
- 10 23. M. Bonato, M. Caporin, and A. Rinaldo. Forecasting realized (co)variances with a block  
11 structure Wishart autoregressive model. Working Papers, 2009.
- 12 24. K. Boudt, C. Croux, and S. Laurent. Outlyingness weighted quadratic covariation. Work-  
13 ing Paper, 2008.
- 14 25. L. Breiman, J. Friedman, C. J. Stone, and Richard A. Olshen. *Classification and regression*  
15 *trees*. Chapman & Hall/CRC, 1984.
- 16 26. L.E. Calvet and A.J. Fisher. How to forecast long-run volatility: Regime switching and  
17 the estimation of multifractal processes. *Journal of Financial Econometrics*, 2(1):49–83,  
18 2004.
- 19 27. J. Y. Campbell and L. Hentschel. No news is good news: a asymmetric model of changing  
20 volatility in stock returns. *Journal of Financial Economics*, 31:281–318, 1992.
- 21 28. R. Chiriac and V. Voev. Modelling and forecasting multivariate realized volatility. *Journal*  
22 *of Applied Econometrics*, 2010.
- 23 29. K. Christensen, R. Oomen, and M. Podolskij. Realised quantile-based estimation of the  
24 integrated variance. *Journal of Econometrics*, 159(1):74–98, 2010.
- 25 30. A. Christie. The stochastic behavior of common stock variances: value, leverage and  
26 interest rate effects. *Journal of Financial Economics*, 10:407–432, 1982.
- 27 31. M.P. Clements, A.B. Galvão, and J.H. Kim. Quantile forecasts of daily exchange rate  
28 returns from forecasts of realized volatility. *Journal of Empirical Finance*, 15(4):729–750,  
29 2008.
- 30 32. K. Cohen, G. A. Hawawini, S. F. Maier, R. Schwartz R., and D. Whitcomb D. Friction in  
31 the trading process and the estimation of systematic risk. *Journal of Financial Economics*,  
32 12:263–278, 1983.
- 33 33. F. Comte and E. Renault. Long memory in continuous-time stochastic volatility models.  
34 *Mathematical Finance*, 8(4):291–323, 1998.
- 35 34. F. Corsi. A simple approximate long-memory model of realized volatility. *Journal of*  
36 *Financial Econometrics*, 7:174–196, 2009.
- 37 35. F. Corsi and F. Audrino. Realized covariance tick-by-tick in presence of rounded time  
38 stamps and general microstructure effects. Unpublished manuscript, University of St.  
39 Gallen, 2008.
- 40 36. F. Corsi, D. La Vecchia, and N. Fusari. Realizing smiles: Pricing options with realized  
41 volatility. Working Paper, 2010.
- 42 37. F. Corsi, S. Mittnik, C. Pigorsch, and U. Pigorsch. The volatility of realized volatility.  
43 *Econometric Reviews*, 27(1-3):1–33, 2008.

- 1 38. F. Corsi, D. Pirino, and R. Renò. Threshold bipower variation and the impact of jumps  
2 on volatility forecasting. *Journal of Econometrics*, 159:276–288, 2010.
- 3 39. F. Corsi and R. Renò. Discrete-time volatility forecasting with persistent leverage effect  
4 and the link with continuous-time volatility modeling. Working Paper, 2010.
- 5 40. G. Curci and F. Corsi. Discrete sine transform for multi-scales realized volatility measures.  
6 *Quantitative Finance*, 2010. Forthcoming.
- 7 41. M.M. Dacorogna, U.A. Müller, R.D. Davé, R.B. Olsen, and O.V. Pictet. Modelling short-  
8 term volatility with garch and harch models. In *Nonlinear Modelling of High Frequency  
9 Financial Time Series*, pages 161–76, 1998. edited by C. Dunis and B. Zhou, John Wiley,  
10 Chichester.
- 11 42. F. De Jong and T. Nijman. High frequency analysis of lead-lag relationships between  
12 financial markets. *Journal of Empirical Finance*, 4(2-3):259–277, 1997.
- 13 43. R.F. Engle and G.G.J. Lee. A permanent and transitory component model of stock return  
14 volatility. In R.F. Engle and H. White, editors, *Cointegration, Causality, and Forecasting:  
15 A Festschrift in Honor of Clive WJ Granger*, pages 475–497. Oxford University Press,  
16 Oxford, 1999.
- 17 44. T. Epps. Comovements in stock prices in the very short run. *Journal of the American  
18 Statistical Association*, 74:291–298, 1979.
- 19 45. L. Forsberg and E. Ghysels. Why do absolute returns predict volatility so well? *Journal  
20 of Financial Econometrics*, 5:31–67, 2007.
- 21 46. C. Francq and J.M. Zakoian. Bartlett’s formula for a general class of nonlinear processes.  
22 *Journal of Time Series Analysis*, 30(4):449–465, 2009.
- 23 47. E. Ghysels, P. Santa-Clara, and R. Valkanov. Predicting volatility: getting the most out of  
24 return data sampled at different frequencies. *Journal of Econometrics*, 131(1-2):59–95,  
25 2006.
- 26 48. E. Ghysels, A. Sinko, and R. Valkanov. Midas regressions: Further results and new  
27 directions. *Econometric Reviews*, 26:53–90, 2006.
- 28 49. R. Giacomini and H. White. Tests of conditional predictive ability. *Econometrica*,  
29 74(6):1545–1578, 2006.
- 30 50. L. Glosten, R. Jagannathan, and D. Runkle. On the relation between the expected value of  
31 the volatility of the nominal excess return on stocks. *Journal of Finance*, 48:1779–1801,  
32 1989.
- 33 51. S. Gonçalves and N. Meddahi. Box-Cox transforms for realized volatility. *Journal of  
34 Econometrics*, 160(1):129–144, 2011.
- 35 52. C. Granger. Long memory relationships and the aggregation of dynamic models. *Journal  
36 of Econometrics*, 14:227–238, 1980.
- 37 53. J.E. Griffin and R.C.A. Oomen. Covariance measurement in the presence of non-  
38 synchronous trading and market microstructure noise. *Journal of Econometrics*, 160(1):58–  
39 68, 2011.
- 40 54. T. Hayashi and N. Yoshida. On covariance estimation of non-synchronously observed  
41 diffusion processes. *Bernoulli*, 11(2):359, 2005.
- 42 55. J. Jacod, Y. Li, P.A. Mykland, M. Podolskij, and M. Vetter. Microstructure noise in the  
43 continuous case: The pre-averaging approach. *Stochastic Processes and their Applica-  
44 tions*, 119(7):2249–2276, 2009.

- 1 56. G.J. Jiang and R.C.A. Oomen. Testing for jumps when asset prices are observed with  
2 noise—a "swap variance" approach. *Journal of Econometrics*, 144(2):352–370, 2008.
- 3 57. X. Jin and J. Maheu. Modelling realized covariances and returns. Working Papers, 2010.
- 4 58. B. LeBaron. Stochastic volatility as a simple generator of financial power-laws and long  
5 memory. *Quantitative Finance*, 1:62131, 2001.
- 6 59. S.S. Lee and P.A. Mykland. Jumps in financial markets: A new nonparametric test and  
7 jump dynamics. *Review of Financial studies*, 21(6):2535, 2008.
- 8 60. A. Lo and W. Andrew. An econometric analysis of nonsynchronous trading. *Journal of*  
9 *Econometrics*, 45(1-2):181–211, 1990.
- 10 61. P. Lynch and G. Zumbach. Market heterogeneities and the causal structure of volatility.  
11 *Quantitative Finance*, 3(4):320–331, 2003.
- 12 62. C. Mancini. Non-parametric threshold estimation for models with stochastic diffusion  
13 coefficient and jumps. *Scandinavian Journal of Statistics*, 36(2):270–296, 2009.
- 14 63. C. Mancini and R. Renò. Threshold estimation of Markov models with jumps and interest  
15 rate modeling. *Journal of Econometrics*, 160(1):77–92, 2011.
- 16 64. M.E. Mancino and S. Sanfelici. Estimating covariance via Fourier method in the presence  
17 of asynchronous trading and microstructure noise. *Journal of Financial Econometrics*,  
18 2010. Forthcoming.
- 19 65. A. McAleer and M.C. Medeiros. A multiple regime smooth transition heterogeneous  
20 autoregressive model for long memory and asymmetries. *Journal of Econometrics*,  
21 147:104–119, 2008.
- 22 66. U. Muller, M. Dacorogna, R. Davé, R. Olsen, O. Pictet, and J. von Weizsacker. Volatilities  
23 of different time resolutions - analyzing the dynamics of market components. *Journal of*  
24 *Empirical Finance*, 4:213–239, 1997.
- 25 67. A. Palandri. Consistent realized covariance for asynchronous observations contaminated  
26 by market microstructure noise. Unpublished Manuscript, 2006.
- 27 68. R. Renò. A closer look at the Epps effect. *International Journal of Theoretical and*  
28 *Applied Finance*, 6(1):87–102, 2003.
- 29 69. M. Scharth and M.C. Medeiros. Asymmetric effects and long memory in the volatility of  
30 dow jones stocks. *International Journal of Forecasting*, 25:304–327, 2009.
- 31 70. M. Scholes and J. Williams. Estimating betas from nonsynchronous data. *Journal of*  
32 *Financial Economics*, 5:181–212, 1977.
- 33 71. K. Sheppard. Realized covariance and scrambling. Unpublished Manuscript, 2006.
- 34 72. V. Voev and A. Lunde. Integrated covariance estimation using high-frequency data in the  
35 presence of noise. *Journal of Financial Econometrics*, 5:68–104, 2007.
- 36 73. L. Zhang. Efficient estimation of stochastic volatility using noisy observations: a multi-  
37 scale approach. *Bernoulli*, 12(6):1019–1043, 2006.
- 38 74. L. Zhang, P. A. Mykland, and Y. Ait-Sahalia. A tale of two time scales: Determining  
39 integrated volatility with noisy high-frequency data. *Journal of the American Statistical*  
40 *Association*, 100:1394–1411, 2005.